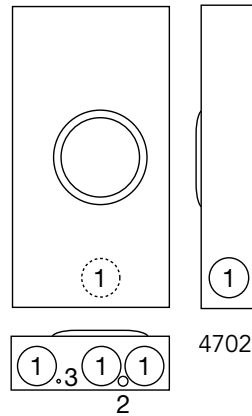


Milbank Meter Sockets

KCP&L /KC Area



U4702-X-5T9-K3-K2-IL



4702

Ringless Meter Sockets

Application	KCP&L Number
1 position, 100 Amp, 3W	U7043-XL-TG-KK-IL-5T9W**
1 position, 200 Amp, 3W	U7043-XL-TG-KK-IL-5T9W**
1 position, 400 Amp, 3W	U4702-X-5T9-K3-K2-IL ¹

Commercial Self-Contained Socket (3 Phase 4 wire)

Application	KCP&L Number
1 position, 200 Amp, 4W	U8107-XL-IL

Breaker Chart for Condominium Sockets

Manufacturer	150–200 Amps	125 Amps or Less
Cutler Hammer	BJ, WBJ	Quicklag P, BR, HQP
Siemens	QNR	QP
Murray	MD	MP
G.E.		Q Line
Square D	—	Homeline

Notes

*Use connector kits on line side only.

Use **7043-XL-TG-IL-5T9W can also be used in 3 phase 3 wire applications.

¹ Max. line side conductor size is (1) 600 kcmil or (2) 250 kcmil.

² Single 350 kcmil line side connector only.

³ Single or twin 350 kcmil line side connector only.

⁴ Single 600 kcmil line side connector only.

Multi-Position Horizontal Sockets

Application	KCP&L Number
2 position, 100 Amp, 3W	U1232-X-5T-K1 ²
3 position, 100 Amp, 3W	U1233-X-5T-K3 ³
4 position, 100 Amp, 3W	U1234-X-5T-K3 ³
2 position, 200 Amp, 3W	U1252-X-5T-K1 ²
3 position, 200 Amp, 3W	U1253-X-5T-K1 ²
4 position, 200 Amp, 3W	U1254-X-5T-K3 ³
5 position, 200 Amp, 3W	U1255-X-5T-K4 ⁴
6 position, 200 Amp, 3W	U1256-X-5T-K4 ⁴

Multi-Position Condominium Sockets* (requires mains)

Application	KCP&L Number
2 position, 125 Amp, 3W	U2852-X-KK-5T
3 position, 125 Amp, 3W	U2853-X-KK-5T
4 position, 125 Amp, 3W	U2854-X-KK-5T
5 position, 125 Amp, 3W	U2855-X-KK-5T
6 position, 125 Amp, 3W	U2856-X-KK-5T
2 position, 200 Amp, 3W	U2862-X-KK-5T
3 position, 200 Amp, 3W	U2863-X-KK-5T
4 position, 200 Amp, 3W	U2864-X-KK-5T
5 position, 200 Amp, 3W	U2865-X-KK-5T
6 position, 200 Amp, 3W	U2866-X-KK-5T

Main Breaker sold separately. See chart



Utility requirements for this equipment may vary. Always consult the serving utility for their requirements before ordering or installing equipment.