

Surface-Mount Power Distribution and Controls



Originally developed for small cellular communications, the surface-mount power distribution and controls equipment offers the flexibility of larger power distribution products with a smaller footprint and several mounting options.

Features

- Easy installation
- Overhead and underground entry and exit
- Meter and components in one enclosure
- UL listed as UL508A
 - UL listing covers all internal components
- Can be mounted on multiple surfaces
 - Walls
 - Poles – *narrow profile will have minimal extension past sides*
 - H Frames (Strut)
- Multiple bypass options available
- Monitoring options available
- Powder coating in standard or custom colors

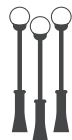
Benefits

- Does not take up sidewalk space
- Flood resistant
- Eliminates need for connecting components
 - Wire in - wire out

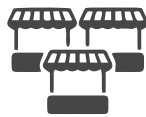
Applications



**Communications
Power
Distribution**



**Lighting
Control**



**Streetscape
Power
Distribution**



**Traffic
Control**

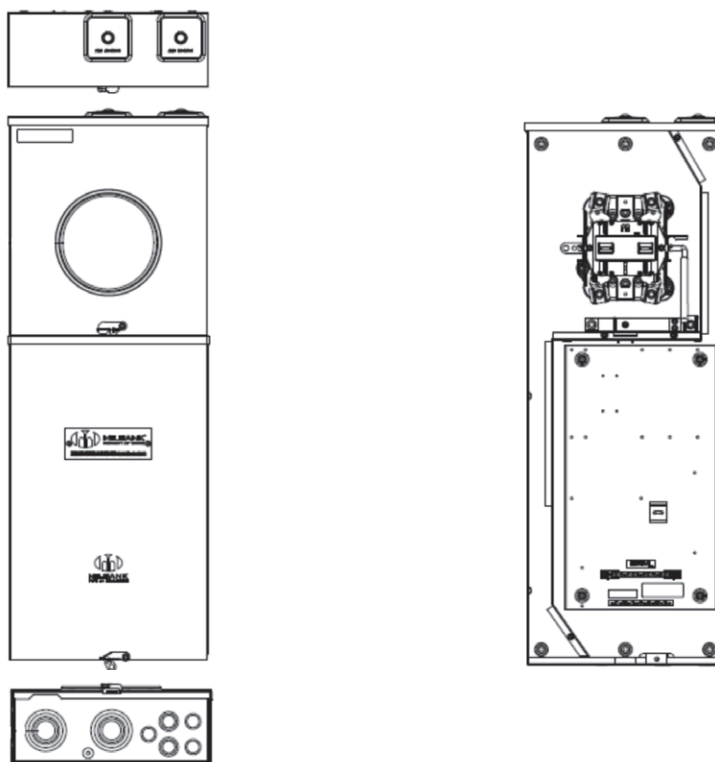


Please consult serving utility for their requirements prior to ordering or installing, as specifications and approvals vary by utility, and may require local electrical inspector approval. All installations must be installed by a licensed electrician and must comply with all national and local codes, laws and regulations. Milbank reserves the right to make changes in specifications and features shown without notice or obligation.





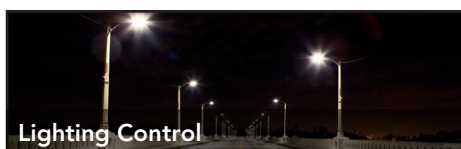
Surface-Mount Power Distribution and Controls



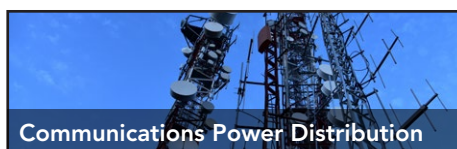
Catalog Number	Amps	Meter Type & Bypass Options	Dimensions		
			D"	W"	H"
Provided with quote	60-200	Ringless - No Bypass	5 ¹³ / ₁₆	14 ¹ / ₈	36 ¹ / ₁₆
		Ringless - Lever Bypass			
		Ringless - Horn Bypass			
		Ring type - No Bypass			
		Ring type- Test block bypass*			

*Smaller customer section due to the space requirement of the test blocks.
Check with local utility for approval status and/or additional requirements.

Common Applications



Lighting Control



Communications Power Distribution



Streetscape Power Distribution

Please consult serving utility for their requirements prior to ordering or installing, as specifications and approvals vary by utility, and may require local electrical inspector approval. All installations must be installed by a licensed electrician and must comply with all national and local codes, laws and regulations. Milbank reserves the right to make changes in specifications and features shown without notice or obligation.

