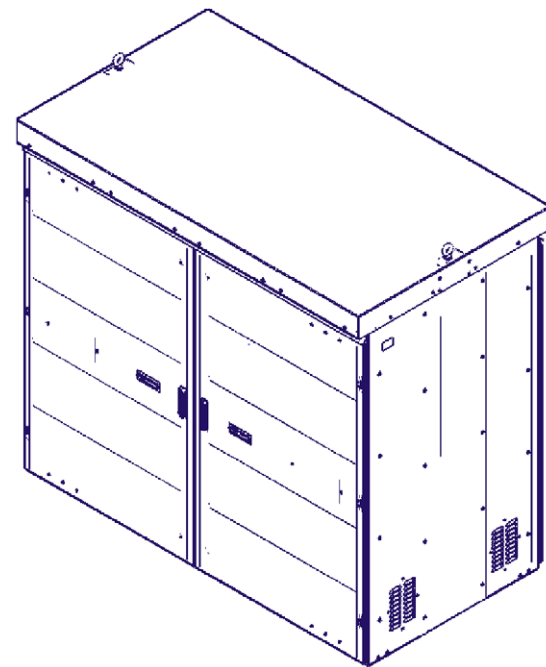




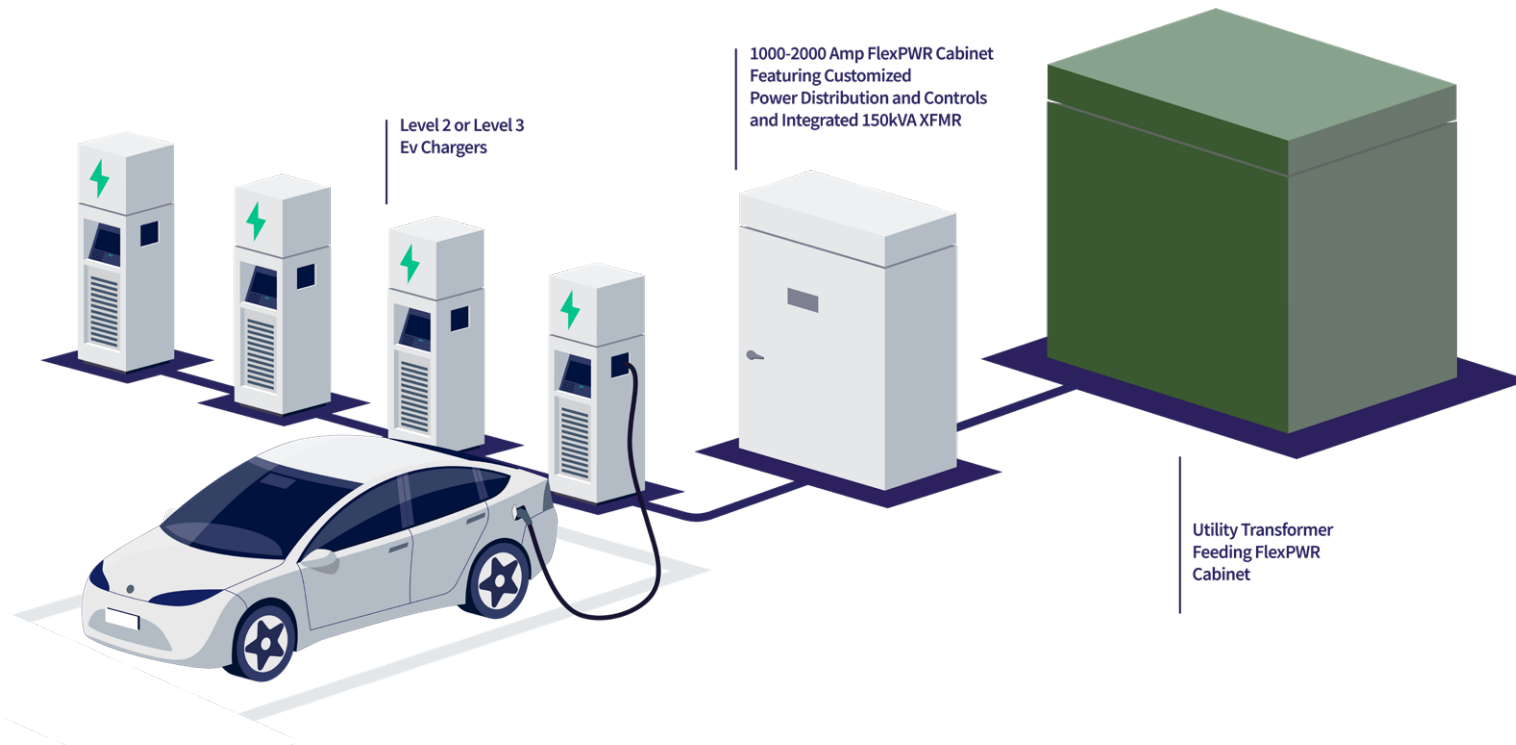
PVA4R

Three-Phase, Level 2

1200 Amp Main Breaker Frame,
208Y/120V 3PH 4W, 65kA AIC Rating



High Amperage Power Distribution & Controls Designed for Connectivity and Reliability



Innovation by Design



EUSERC Compliant

*PWRvance cabinets are designed
for EUSERC compliance.*



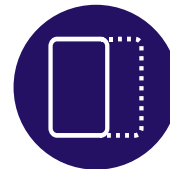
Dual Voltage Designs

*Integrated transformer
up to 150 KVA.*



Industry Best Lead Times

*Best-in-class support team to
help you meet your deadlines.*



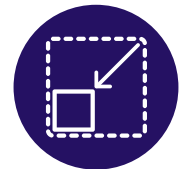
Expandable Compartments

*Up to six expandable bays for
custom distribution and controls.*



UL-Listed and NEMA 3R Rated

*PWRvance cabinets undergo
rigorous product testing.*

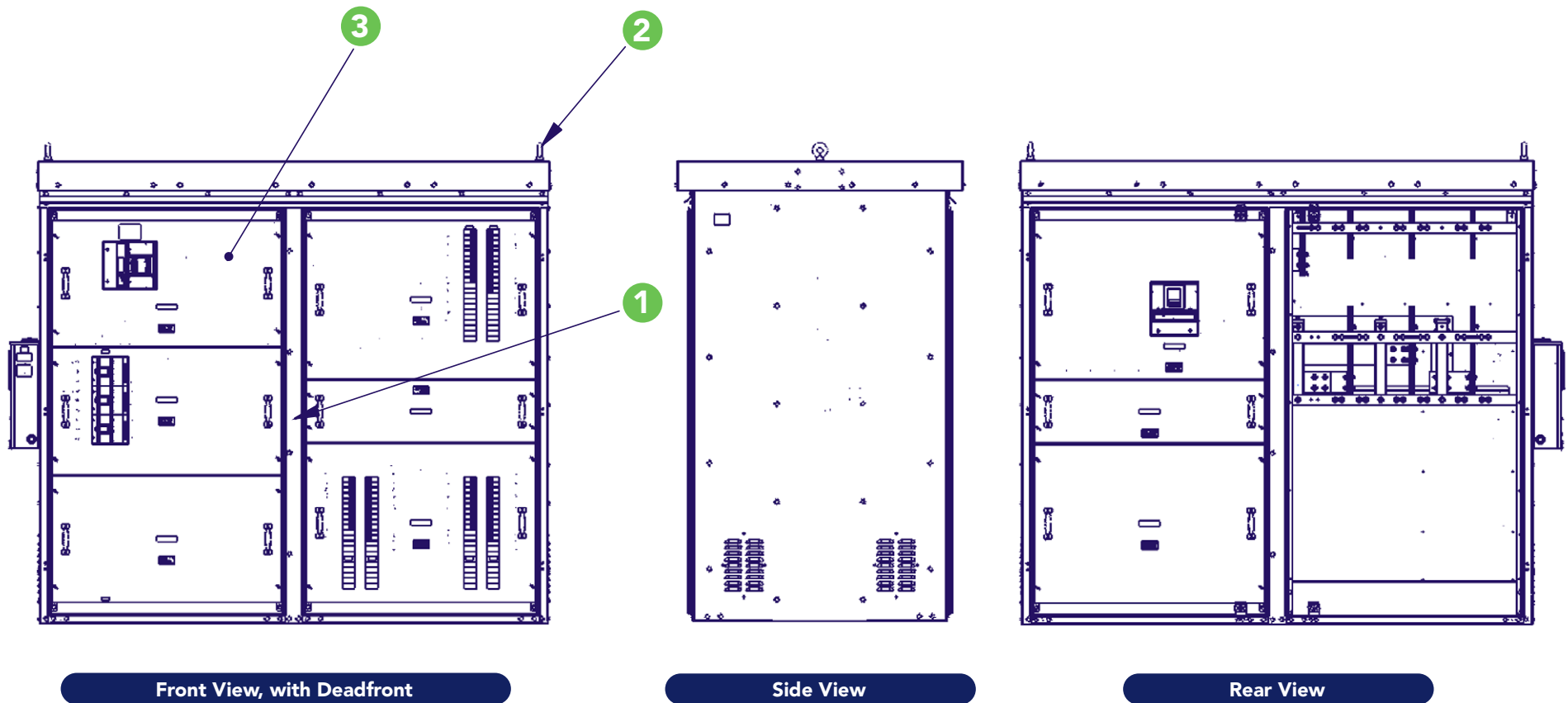


Space Saving Design

*Designed to save you space on
every project.*

PVA4R 1200A

Three-Phase, Level 2

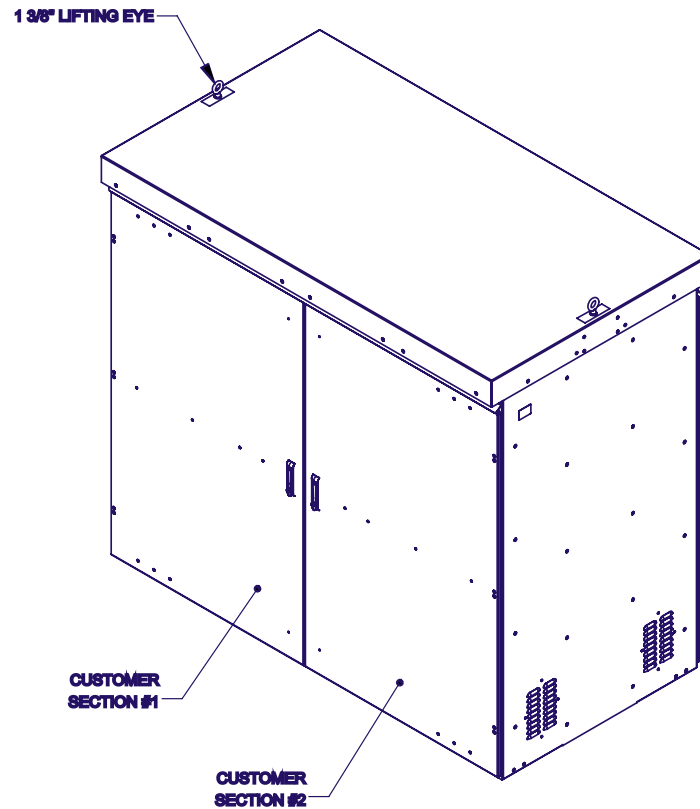


- 1 LABEL UL 508A INDUSTRIAL CONTROL PANELS
- 2 MISCELLANEOUS PARTS ENCLOSED CONTROLS NAMEPLATE, SERVICE EQUIPMENT ONLY REMOVED
- 3 PVA ELECTRICAL SCHEDULE 4R BOLT-ON 1200A BOLT-ON

PVA4R 1200A

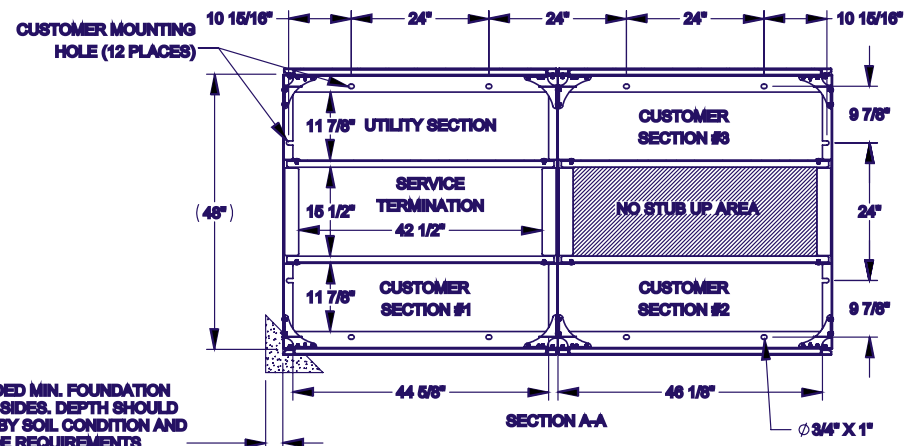
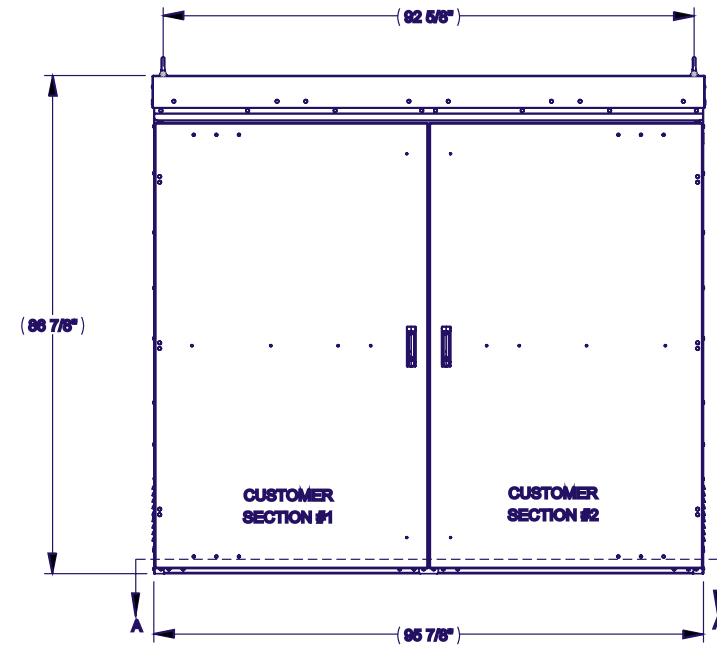
Three-Phase, Level 2

PVA4R 1200A, Level 2
For Dimensional Purposes Only, Drawings Not to Scale



- PADLOCKABLE 3-POINT LATCH ON ALL EXTERIOR DOORS THAT OPEN TO 120 DEGREES WITH DOOR STOPS
- SCREENED SOFFIT AND LOUVER VENTS

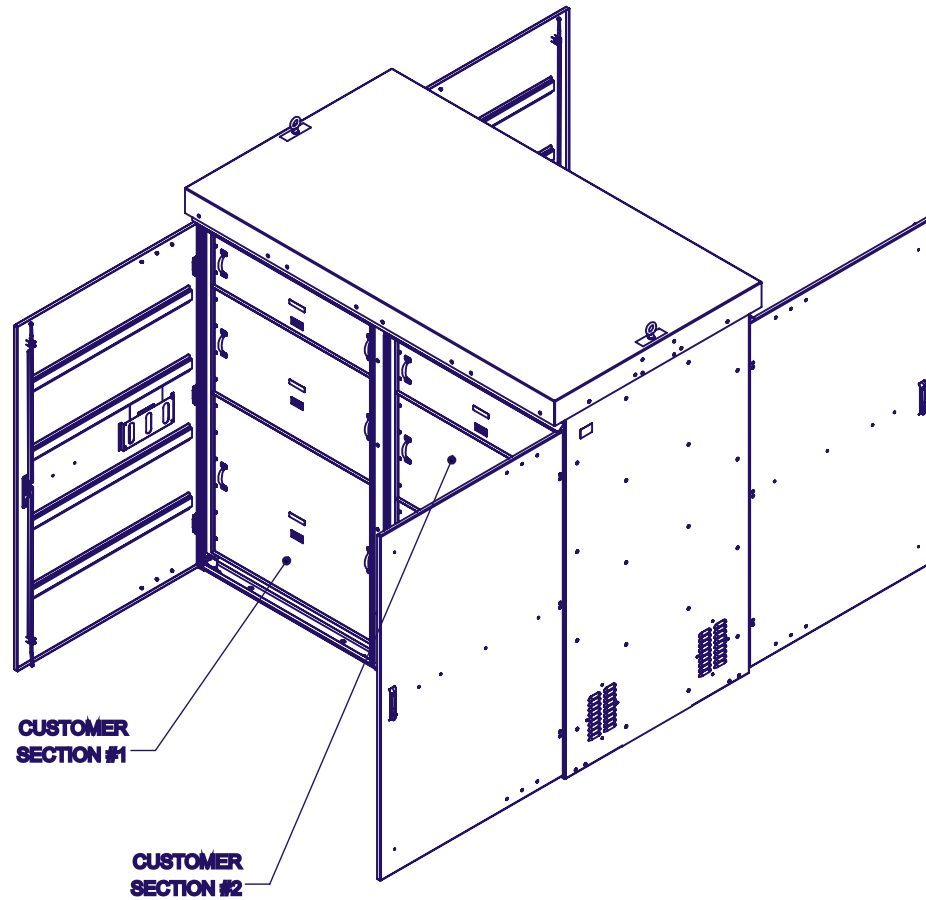
3" RECOMMENDED MIN. FOUNDATION EXTENSION ALL SIDES. DEPTH SHOULD BE DETERMINED BY SOIL CONDITION AND LOCAL CODE REQUIREMENTS



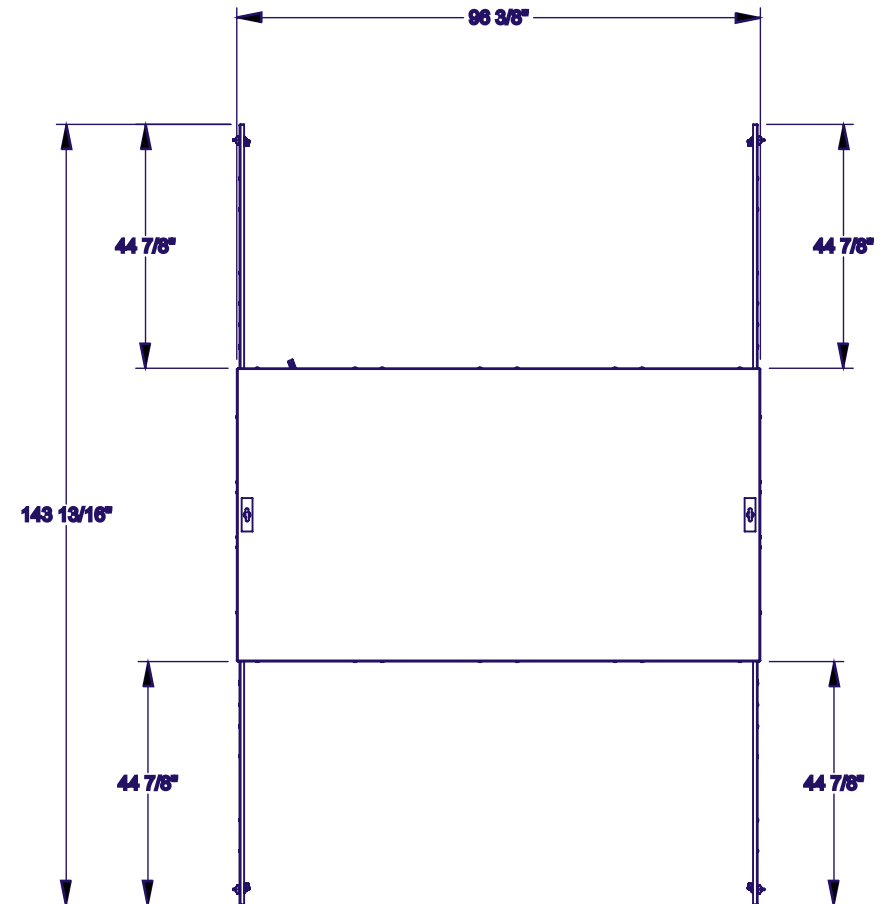
PVA4R 1200A

Three-Phase, Level 2

PVA4R 1200A, Level 2
For Dimensional Purposes Only, Drawings Not to Scale



DOORS ARE REMOVABLE FROM
THE INSIDE AT THE HINGES



CLEARANCE VIEW

**FOLLOW NEC 110-6
OR LOCAL REQUIREMENTS
FOR MINIMUM CLEARANCES**



PWRVANCE™

INNOVATION BY MILBANK

**For more information, contact us at
sales@pwrvance.com or visit
pwrvance.com today.**

www.pwrvance.com | [@milbankworks](https://twitter.com/milbankworks) | www.milbankworks.com

Milbank Manufacturing | 4801 Deramus Ave., Kansas City, MO 64120 | 877.483.5314 | milbankworks.com