



Meter Mains with Emergency Disconnect

UL Listed | 100-200 Amps

As NEC 2020 starts to be adopted across the country, single position residential meter sockets will need an emergency disconnect. Milbank's U3499 and U3990 series mains are compliant with NEC 2020 sections 230.85(1) emergency disconnect requirement and 230.62 enclosed or guarded service equipment requirement and could serve as the right solution for your project.

Always check with your local utility to see what products are approved in your area. Milbank is working hard on solutions to ensure our products meet NEC 2020 requirements. If you're looking for a product or have questions, contact your local rep.



U3499



U3990

Features

- 100 Amps - U3499
- 150-200 Amps - U3990
- No bypass
- Ringless meter socket
- Main breaker
- Overhead/underground entry
- G90 galvanized steel with powder coat finish
- Single phase
- NEMA 3R enclosure
- UL listed
- Manufactured in the USA

The U3499 and U3990 can be used for residential applications.



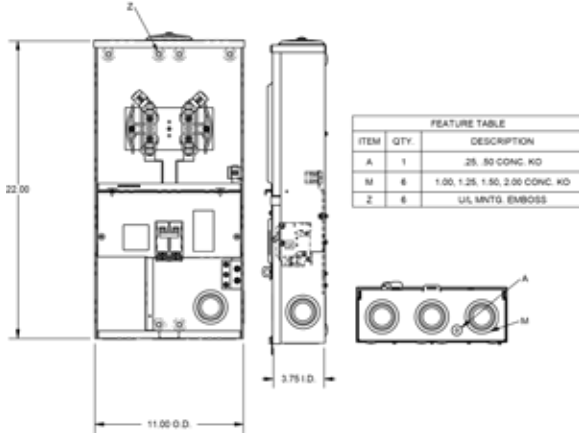
Please consult serving utility for their requirements prior to ordering or installing, as specifications and approvals vary by utility, and may require local electrical inspector approval. All installations must be installed by a licensed electrician and must comply with all national and local codes, laws and regulations. Milbank reserves the right to make changes in specifications and features shown without notice or obligation.



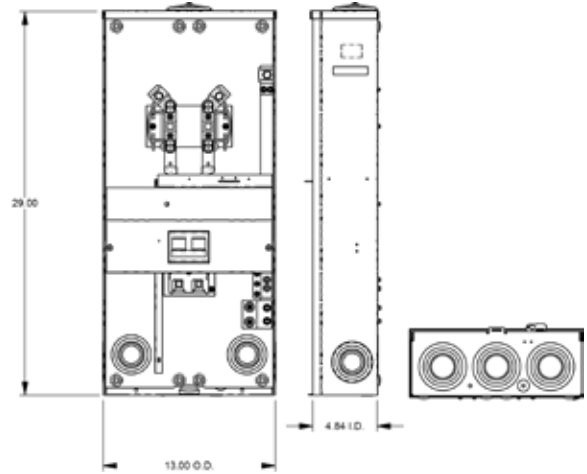


Meter Mains with Emergency Disconnect

UL Listed | 100-200 Amps



U3499



U3990

100-200 Amps | 4 Terminals | Ringless | 1Ø3W

Catalog Number	Service	Amps	Hub	Connectors CU/AL		Bypass	Dimensions			Knockouts			
				Line	Load		D"	W"	H"	1	2	3	4
U3499-XL	OH/UG	100	C.P.	#6-2/0	CB	None	3¾	11	22	2	¼, ½	—	—
U3499-XL-100	OH/UG	100	C.P.	#6-2/0	#6-1/0	None	3¾	11	22	2	¼, ½	—	—
U3990-XL-150	OH/UG	150	C.P.	#2-350	#1/0-300	None	4⅞	13	29	3	2½	¼, ½	¼
U3990-XL-200	OH/UG	200	C.P.	#2-350	#1/0-300	None	4⅞	13	29	3	2½	¼, ½	¼

Consult your local utility for approved products in your area.

Notes

- Fifth Terminal:** For field installable fifth terminal on U3499, order 5T8K2. For factory-installed fifth terminal on U3990, add suffix -5T to catalog number.
- Circuit Breakers 3499:** The 3499-XL-100 has a factory-installed 100 Amps breaker. Breakers are AIC rated at 22K AIC. The 3499-XL accepts breakers from multiple manufacturers. Refer to chart below.
- Circuit Breakers 3990:** The 3990-XL-150 and 3990-XL-200 have factory-installed Milbank UQFB-(AMP)-X1 breakers. Breakers are rated 22K AIC.

Branch Breaker Chart (10K unless otherwise noted)

Amps	Siemens	Cutler-Hammer	Square D	GE
<100	QP, (QPH 22K)	BR	Homeline	Q Line

Please consult serving utility for their requirements prior to ordering or installing, as specifications and approvals vary by utility, and may require local electrical inspector approval. All installations must be installed by a licensed electrician and must comply with all national and local codes, laws and regulations. Milbank reserves the right to make changes in specifications and features shown without notice or obligation.

