

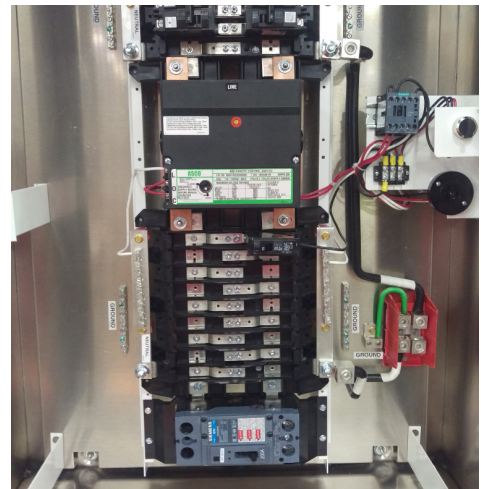
Milbank Designs Custom Lighting Controls for Chicago Skyway Toll Bridge



An outdated lighting control cabinet along the Skyway Bridge in Chicago, Ill.



One of the newly installed Milbank enclosed control solutions on the Skyway Bridge in Chicago, Ill.



The Problem

Built by the City of Chicago in 1958, the Skyway Toll Bridge connects Northwest Indiana to the heart of Chicago and spans 7.8 miles. The bridge had 19 aging lighting control cabinets that needed to be replaced. The new cabinets needed to all be one standard size, but also have the ability to fit on various types of bases and structures.

The Solution

Milbank engineers designed a safe, durable and sleek application to replace the existing cabinets along the bridge. They designed each cabinet with openings that could be adjusted at the base for an easy fit on multiple structures. The new applications have custom features, a more attractive design, updated components and the ability to fit on the various existing bases.