



# Meter Mounting Equipment

Texas Deregulated Utilities

## Texas/New Mexico Power - TNP & CVEC Area

125-320 Amps | 4-7 Terminals | Single Position

Catalog Number	Amps	Terminals	Service
U8435-RL-TG	125	4	OH
U7588-XL	125	4	UG
U8100-ZL*	125	7	OH
U7021-RL-TG	200	4	OH
U1980-O†	200	4	UG
U9580-RXL	200	5	OH
U1079-R	320	4	OH
U2448-X	320	4	OH/UG

\*Includes a 1 1/2" hub.

†Side wireway included.

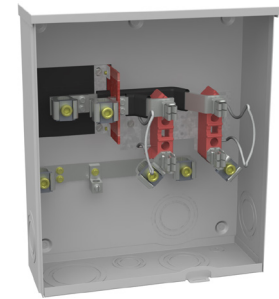
200-320 Amps | 7 Terminals | Single Position | Medium & Heavy Duty

Catalog Number	Amps	Terminals	Service	Bypass
U7423-XL*	200	7	OH/UG	Lever
U9701-RRL	200	7	OH/UG	Lever
U2594-X	320	7	OH/UG	Lever

\*Lever operates bypass only, not jaw clamping.

150 Amps per Position | 4 Terminals | Multi-Position | Horizontal Gangs

Catalog Number	Amps	Terminals	Positions	Service
U1232-X	150	4	2	OH/UG
U1233-RXL	150	4	3	OH/UG
U1234-RXL	150	4	4	OH/UG
U1235-RXL	150	4	5	OH/UG
U1236-RXL	150	4	6	OH/UG



U1980-O

200 Amps per Position | 4 & 7 Terminals | Multi-Position | Horizontal Gangs

Catalog Number	Amps	Terminals	Positions	Service
U1252-X-K1	200	4	2	OH/UG
U1253-X-K3	200	4	3	OH/UG
U1254-X-K3	200	4	4	OH/UG
U1255-X-K4	200	4	5	OH/UG
U1256-X-K4	200	4	6	OH/UG
U2734-XT	200	7	4	OH/UG



U7423-XL

Please consult serving utility for their requirements prior to ordering or installing, as specifications and approvals vary by utility, and may require local electrical inspector approval. All installations must be installed by a licensed electrician and must comply with all national and local codes, laws and regulations. Milbank reserves the right to make changes in specifications and features shown without notice or obligation.



## CoServ Area

200-320 Amps | 4 Terminals | Single Position

Catalog Number	Amps	Terminals	Service
U7040-XL-TG	200	4	OH/UG
U4257-X-2/K2*	320	4	OH/UG

\*Lugs included.

200-320 Amps | 7 Terminals | Single Position | Medium & Heavy Duty

Catalog Number	Amps	Terminals	Service	Bypass
U9700-DL-QG*	200	7	OH	Lever
U3786-X-QG†	200	7	OH/UG	Lever
U4487-X-2/K6‡	320	7	OH/UG	Lever

\*Includes a 2" hub.

†Lever operates bypass only, not jaw clamping.

‡Lugs included.

## Pedernales Electric Cooperative (PEC)

200-320 Amps | 4 Terminals | Single Position

Catalog Number	Amps	Terminals	Service
U7021-DL-TG	200	4	OH
U7040-XL-TG	200	4	UG
U1079-F-2/K3L-PEC	320	4	OH
U1797-O-2/K3L-PEC	320	4	UG

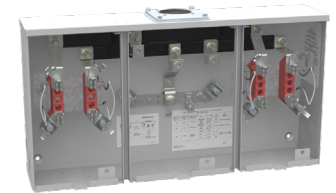


U7021-DL-TG

## AEP—West Area

200 Amps per Position | 4 Terminals | Multi-Position | Horizontal Gang | Lugs Included

Catalog Number	Amps	Terminals	Positions	Service
U1252-RRL-KK-K1-BLG-SLVG	200	4	2	OH/UG
U1253-RRL-KK-K1-BLG-SLVG	200	4	3	OH/UG
U1254-RRL-KK-K1-BLG-SLVG	200	4	4	OH/UG
U1255-RRL-KK-K1-BLG-SLVG	200	4	5	OH/UG
U1256-RRL-KK-K1-BLG-SLVG	200	4	6	OH/UG



U1252-RRL-KK-K1-BLG-SLVG

400 Amps | 4 & 7 Terminals | Meter Mains with Breaker | Lugs Included

Catalog Number	Amps	Terminals	Service	Phase
U6227-X-400-K3L-BLG*	400	4	OH/UG	1Ø3W
U6229-X-400-K7L-BLG	400	7	OH/UG	3Ø4W
U6115-X-2/200-K7L-BLG†	400	7	OH/UG	3Ø4W

\*Has a 400 Amps main breaker.

†Includes two 200 Amps main breakers.

Please consult serving utility for their requirements prior to ordering or installing, as specifications and approvals vary by utility, and may require local electrical inspector approval. All installations must be installed by a licensed electrician and must comply with all national and local codes, laws and regulations. Milbank reserves the right to make changes in specifications and features shown without notice or obligation.



## AEP—West Area (cont.)

125-200 Amps | 4 Terminals | Single Position

Catalog Number	Amps	Terminals	Service
U7040-RL-TG-KK-BLG-AEP	200	4	OH
U7021-RL-TG-KK-BLG	200	4	OH
U1980-O-KK-BLG-AEP	200	4	UG
UAP7040-RL-TG-KK-BLG-AEP*	200	4	OH
UAP1980-O-KK-BLG-AEP*	200	4	UG
U9801-RXL-QG-BLG-AEP	200	4	OH/UG
UAP9801-RXL-QG-BLG-AEP*	200	4	OH/UG

\*UAP for coastal area (aluminum).



U9581-RL-QG-BLG-AEP

200 Amps | 5 & 7 Terminals | Single Position | Heavy Duty | 3Ø

Catalog Number	Amps	Terminals	Service	Phase	Bypass
U9581-RL-QG-BLG-AEP	200	5	OH/UG	3Ø3W	Lever
U9701-X-QG-BLG-AEP	200	7	OH/UG	3Ø4W	Lever
UAP9581-RL-BLG-AEP*	200	5	OH/UG	3Ø3W	Lever
UAP9701-X-QG-BLG-AEP*	200	7	OH/UG	3Ø4W	Lever

\*UAP for coastal area (aluminum).

320 Amps | 4-7 Terminals | Single Position | Lugs Included

Catalog Number	Amps	Terminals	Service	Phase
U5161-X-K3L-K2L-BLG	320	4	OH/UG	1Ø3W
U1797-O-K3L-K2L-BLG†	320	4	UG	1Ø3W
U4905-X-K3-K2-BLG†	320	4	OH/UG	1Ø3W
UAP1797-O-K3L-K2L-BLG*	320	4	UG	1Ø3W
UAP4362-R-K3-K2-BLG	320	5	OH/UG	1Ø
UAP4362-R-K3-K2-BLG*	320	5	OH/UG	1Ø
U4342-R-K7-K6-BLG	320	7	OH/UG	3Ø4W
UAP4342-R-K7-K6-BLG*	320	7	OH/UG	3Ø4W
U2594-X-K7-K6-BLG†	320	7	OH/UG	3Ø4W
UAP2594-X-K7-K6-BLG*	320	7	OH/UG	3Ø4W

\*UAP for coastal area (aluminum).

†Side wireway included.



U4342-R-K7-K6

Please consult serving utility for their requirements prior to ordering or installing, as specifications and approvals vary by utility, and may require local electrical inspector approval. All installations must be installed by a licensed electrician and must comply with all national and local codes, laws and regulations. Milbank reserves the right to make changes in specifications and features shown without notice or obligation.





# Meter Mounting Equipment

Texas Deregulated Utilities

## XCEL Energy

200-320 Amps | 5 & 7 Terminals | Single Position | Heavy Duty

Catalog Number	Amps	Terminals	Service	Bypass
U4801-XL-5T9	200	5	OH/UG	Lever
U9701-RRL	200	7	OH/UG	Lever
U4184-X	200	7	OH/UG	Lever
U1779-R-5T9	320	5	OH/UG	Lever
U3000-O-5T9-K3L-K2L	320	5	UG	Lever
U2120-X	320	7	UG	Lever
U2594-X	320	7	OH/UG	Lever



U4801-XL-5T9

200 Amps per Position | 5 Terminals | Multi-Position | Horizontal Gangs | Heavy Duty

Catalog Number	Amps	Terminals	Positions	Service	Bypass
U2872-XT-5T9	200	5	2	OH/UG	Lever
U2873-XT-5T9	200	5	3	OH/UG	Lever
U2874-XT-5T9	200	5	4	OH/UG	Lever
U2875-XT-5T9	200	5	5	OH/UG	Lever
U2876-XT-5T9	200	5	6	OH/UG	Lever



U2872-XT-5T9

## CenterPoint Energy\*

125-200 Amps | 4-7 Terminals | Single Position | Ring Type

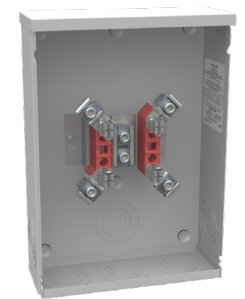
Catalog Number	Amps	Terminals	Service
U8874-RL-LR	125	4	OH/UG
U5009-RL-LR	200	4	OH
U8878-RL-LR	200	4	OH/UG
U8878-O-LR	320	4	UG
U1973-EL*	320	5	OH/UG
U3328-RXL-LR†	320	7	OH/UG

\*Includes 2 1/2" hub and is phase 3Ø3W.

†Includes lever bypass that supplies clamping action on meter spades and also operates bypass device.

320 Amps | 4-7 Terminals | Single Position | Heavy Duty

Catalog Number	Amps	Terminals	Service	Bypass
U1797-O-K3L-K2L	320	4	UG	Lever
U2448-X	320	4	OH/UG	Lever
U1079-R-5T9	320	5	OH/UG	Lever
U2594-X	320	7	OH/UG	Lever
U2594-X-BLG	320	7	OH/UG	Lever



U8878-O-LR

Gang sockets are approved by CenterPoint Energy on a case-by-case basis

Please consult serving utility for their requirements prior to ordering or installing, as specifications and approvals vary by utility, and may require local electrical inspector approval. All installations must be installed by a licensed electrician and must comply with all national and local codes, laws and regulations. Milbank reserves the right to make changes in specifications and features shown without notice or obligation.





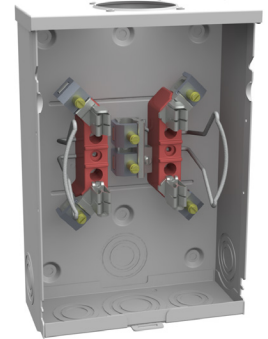
# Meter Mounting Equipment

Texas Deregulated Utilities

## Entergy

125-200 Amps | 4-7 Terminals | Single Position

Catalog Number	Amps	Terminals	Service
U8435-RL-TG	125	4	OH
U7487-RL-TG	125	4	OH
U7021-RL-TG	200	4	OH
U7021-DL-TG	200	4	OH
U7040-RL-TG	200	4	OH
U1980-O	200	4	UG



U7487-RL-TG

200-320 Amps | 4-7 Terminals | Single Position | Heavy Duty

Catalog Number	Amps	Terminals	Service	Bypass
U4581-RL	200	5	OH	Lever
U4701-RL	200	7	OH	Lever
U4184-X	200	7	UG	Lever
U1797-O-K3L-K2L*	320	4	UG	Lever
U4257-X	320	4	OH	Lever
U4419-X†	320	5	OH	Lever
U4505-X-2/K3*	320	5	OH	Lever
U4487-X-2/K6*	320	7	OH	Lever
U4487-X-2/K7*	320	7	OH	Lever
U2120-X-2/K7**	320	7	UG	Lever



U4419-X

\*Lugs included.

†This product has a center disconnect.

‡Includes a side wireway.

200 Amps per Position | 4 Terminals | Multi-Position | Horizontal Gangs

Catalog Number	Amps	Terminals	Positions	Service
U1252-X-K1*	200	4	2	OH/UG
U1253-X	200	4	3	OH/UG
U1254-X	200	4	4	OH/UG
U1255-X	200	4	5	OH/UG
U1256-X	200	4	6	OH/UG

\*Lugs included.

Current Transformer Cabinets

Catalog Number	Amps
403214-TC3R-SP1	400-600
543214-TC3R-SP1	800



403214-TC3R-SP1

Please consult serving utility for their requirements prior to ordering or installing, as specifications and approvals vary by utility, and may require local electrical inspector approval. All installations must be installed by a licensed electrician and must comply with all national and local codes, laws and regulations. Milbank reserves the right to make changes in specifications and features shown without notice or obligation.



## TXU/Oncor Area

150-320 Amps | 4-7 Terminals | Single Position

Catalog Number	Amps	Terminals	Service	Bypass
<b>U7262-RL-TG</b>	150	4	OH	No Bypass
<b>U7040-XL-TG</b>	200	4	OH/UG	No Bypass
<b>U9801-RXL</b>	200	4	OH/UG	HD
<b>U9581-RL-QG</b>	200	5	OH/UG	HD
<b>U9701-RXL</b>	200	7	OH/UG	HD
<b>U4362-R</b>	320	4	OH (w/o lugs)	HD
<b>U1797-O-K3L-K2L*</b>	320	4	UG (w/ lugs)	Lever
<b>U4013-X*</b>	320	7	OH/UG (w/o lugs)	Lever

\*Includes side wireway.



U1797-O-K3L-K2L



U9701-RXL

150-200 Amps | 4 Terminals | Multi-Position | Horizontal Gang

Catalog Number	Amps	Positions	Service
<b>U9353-XL</b>	150	3	OH/UG
<b>U9354-XL</b>	150	4	OH/UG
<b>U1252-X-K1</b>	200	2	OH/UG
<b>U1253-X</b>	200	3	OH/UG
<b>U1254-X</b>	200	4	OH/UG
<b>U1255-X</b>	200	5	OH/UG
<b>U1256-X</b>	200	6	OH/UG

200 Amps | 4 Terminals | Mobile Home Pedestal

Catalog Number	Amps	Positions	Service
<b>U5138-O200S-NHB</b>	200	1	UG
<b>U5139-O200S-NHB</b>	200	2	UG

## Accessories

Hubs for Standard "RL" Opening	Suffix	Catalog Number
1"	-WL	<b>A7514</b>
1 1/4"	-YL	<b>A7515</b>
1 1/2"	-ZL	<b>A7516</b>
2"	-DL	<b>A7517</b>
2 1/2"	-EL	<b>A7518</b>

Closing Plates	Suffix	Catalog Number
Small	-XL*	<b>A7551</b>
Large	-X	<b>A9064</b>
Adapter	-RRL	<b>S8324</b>

Hubs for Standard "R" Opening	Suffix	Catalog Number
3"	-F	<b>A8110</b>
3 1/2"	-G	<b>A8111</b>
4"	-H	<b>A8112</b>

Fifth Terminals	Catalog Number
Square Hole	<b>K5T</b>
Round Hole	<b>5T8K2</b>

Lug Kits	Suffix	Catalog Number
<b>350 kcmil</b>	<b>1Ø</b>	<b>(3 per set)</b>
Single	-K1	<b>K1539</b>
Twin	-K2	<b>K1350</b>
Twin (non-rotating)	-K2L	<b>K1350L</b>
<b>600 kcmil</b>	<b>1Ø</b>	<b>(3 per set)</b>
Single	-K3	<b>K1540</b>
Single (non-rotating)	-K3L	<b>K1540L</b>
Twin	-K4	<b>K1541</b>
<b>350 kcmil</b>	<b>3Ø</b>	<b>(4 per set)</b>
Single	-K5	<b>K3082</b>
Twin	-K6	<b>K3442</b>
<b>600 kcmil</b>	<b>3Ø</b>	<b>(4 per set)</b>
Single	-K7	<b>K3441</b>
Twin	-K8	<b>K3083</b>



Please consult serving utility for their requirements prior to ordering or installing, as specifications and approvals vary by utility, and may require local electrical inspector approval. All installations must be installed by a licensed electrician and must comply with all national and local codes, laws and regulations. Milbank reserves the right to make changes in specifications and features shown without notice or obligation.