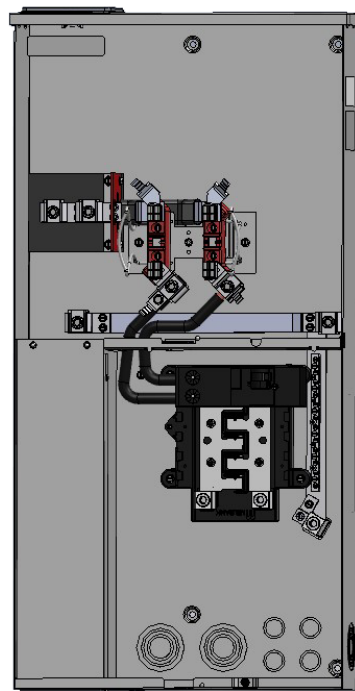


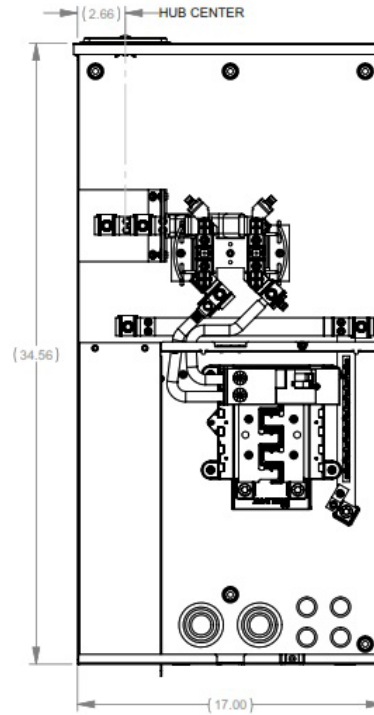


Consumers Energy Approved 200A Meter Main

UL-Listed | *NEC 2020 Compliant*



U6641-XL-200-KK-CE



Milbank's U6641 is compliant with NEC 2020 sections 230.85(1) emergency disconnect requirement and 230.62 enclosed or guarded service equipment requirement and could serve as the right solution for your project.

Features

- **NEC 2020 Compliant**
- Extra branch circuits
- Feed-through lugs
- Interlock kits available for generator backup power
- Overhead/underground entry and exit
- G90 galvanized steel with powder coat finish
- Single phase
- NEMA 3R enclosure

Notes

- **Bypass:** Horn bypass.
- **Fifth Terminal:** For field-installable fifth terminal, order K5T.
- **Interlock Kit:** For generator auxiliary circuit breaker interlock, order K5815 for large QN with small frame Q; order K5820 for large frame QN with large frame QN; order K5830 for small frame Q to small frame Q.
- **Sub Feed Lugs:** #6-350 sub feed lugs provided on 8- and 10-circuit interior.
- **Service Entry:** Overhead or underground. OH has up to 2 1/2" hub opening and UG has up to 3" knockout.
- **Main Circuit Breaker:** 200 Amps type QN large frame. Breakers are not included with interlock kits and must be ordered separately.

Consult your local utility for approved products in your area.