

**MILBANK<sup>®</sup>**  
ENERGY AT WORK



# ENCLOSED **CONTROLS**

**Custom Power Distribution  
and Control Solutions**



Achieve attractive, easy-to-install, cost-effective, secure compact power distribution with Milbank enclosed controls.

# Table of Contents

The Milbank Difference	03	Cabinet Sizes - CP3F	28
Benefits and Applications	04	Cabinet Sizes - CP3G	30
Noteworthy Features	05	Materials and Colors	32
Flexible Options	06	Products and Lead Times	34
Electrical Vehicle Infrastructure	12	Milbank Express	34
Communications	14	History of Enclosed Controls	35
Power Source Management	16	Standardized Accessories	36
Cabinet Sizes - CP3B	18	The Process	37
Cabinet Sizes - CP3A	20	Request for Quote Form	40
Cabinet Sizes - CP2B	22	Case Studies	42
Cabinet Sizes - CP3C	24	Catalog Logic	52
Cabinet Sizes - CP3D	26		





## The Milbank Difference

Milbank designs and manufactures electrical solutions that move and manage power for the residential, commercial, industrial, utility and transportation sectors. With nearly a century of expertise in electrical engineering design and manufacturing, Milbank's portfolio includes metering equipment, enclosures and enclosed controls. Founded in 1927, Milbank is a family-owned, American manufacturer headquartered in Kansas City, Mo. For more information, please visit [milbankworks.com](http://milbankworks.com).

### ENCLOSED CONTROLS

Milbank Enclosed Controls are an attractive, secure, easy-to-install and cost-effective solution for underground remote site power distribution and control equipment. The equipment is ground mounted with or without the pad mount accessory. Our commercial meter pedestals can replace unsightly and inefficient strut and backboard structures.

### UL LISTED, UTILITY APPROVED

All individual components included inside Milbank enclosed controls are covered under the UL508A listing. Utilities across the country are approving the enclosed control cabinets as they move toward a safer, more appealing solution for power distribution. We have various designs that satisfy most utilities' requirements.







## BENEFITS



### Cost Saving

Time is money. Save both with enclosed controls that can install in a fraction of the time of a typical strut and backboard system.



### Simple Specs

With all internal components covered under one UL listing, why spec anything else?



### Safety Focused

Utilities appreciate the separate, secure pull section with an option for metering. Customers are able to plug in without disturbing the service into the enclosure.



### Security Minded

Pedestals are protected from theft and tampering with meter hoods, internal deadfronts and external locking mechanisms. These mechanisms also keep bystanders safe from live electrical parts.

## COMMON APPLICATIONS



Municipal Power



Communications



Site Power



Motor Control



Power Distribution



Outdoor Lighting





## NOTEWORTHY FEATURES

*EASY INSTALLATION*

*UL LISTED*

*SAFE AND SECURE*

*NEMA 3R ENCLOSURE*

*CUSTOMIZATION*

*METERED OR UNMETERED*

## TIME-SAVINGS

Don't waste time shopping for individual components or mounting separate pieces to backboards. Milbank enclosed controls have traditionally been mounted on a concrete pad; however, newer designs allow for wall- or pole- mounting. There are even pedestals that offer a direct bury option. Several units can be installed in less than one hour.

## CITYSCAPES OR GREEN SPACES

With custom colors, finishes, sizes and mounting options, Milbank enclosed controls can blend into any cityscape or park setting.



# Flexible Options



## FIT YOUR LOCATION

Milbank enclosed controls are designed with space in mind. Let our enclosed controls specialists work with you to determine the best solution for your location.





Milbank enclosed controls offer multiple sizes of cabinets that fit the needs for applications big and small. With several mounting configurations available, our enclosed controls specialists will help you design the exact enclosed controls you need for your next project.

## MOUNTING CONFIGURATIONS

### Pad-Mount

Pad-mounting is available for all pedestal sizes. This allows the enclosed controls unit to be buried in a concrete pad.

### Wall- and Pole-Mount

When concrete is not available or ground clearance is required.

### Direct Bury

An alternative solution for our 12-inch slimline pedestals to consider when aesthetics are a factor, like park or landscape installations.

### Traditional Anchor Bolts

Traditional anchor bolts are available when direct bury is not an ideal solution.





# Enclosed Controls Applications



## TRAFFIC

Enclosed controls provide power for traffic signals and controls, as well as their respective battery backups.

## DUAL-PURPOSE

Our enclosed controls offer dual-purpose controls that meet both lighting and traffic demands together in one product.

## LIGHTING

Enclosed controls provide the necessary power supply for municipal lighting such as streetlamps, parks, sports complexes and parking lots.













# Electrical Vehicle Infrastructure

## *Power Distribution for EV Charging*

### ELECTRIC VEHICLES

The prevalence of electric vehicles is on the rise as concerns about cost and vehicle range start to decrease. More businesses, utilities and municipalities are making EV charging stations available. Level 1 charging, while it can be done at home through a 120-volt AC outlet without any additional infrastructure, is not the most viable charging option available. A Level 1 charge can take over 40 hours to charge an electric vehicle from empty to 80%. Milbank enclosed controls have the ability to power Level 2 and 3 charging stations to efficiently and safely draw more power - drastically decreasing charging times for the end-consumer.







## LEVEL 2

A good example of a network of Level 2 chargers is Evergy's Clean Charge Network, which partnered with Milbank to design custom pedestals for power distribution. This level of charging typically runs on 240 VAC with 40 Amp breakers. It will take a car about 10-15 hours to reach a full charge at this level.

## THE FUTURE

From the beginning of EV charging to the present, chargers have continued to require higher amperage capabilities. In addition, it's important to remember that different regions and electrical utilities will have different requirements for EV charging like they do with metering products. Milbank's strong relationships with utilities across the country for metering products allows us to effectively provide other electrical distribution equipment that meets their requirements.

**As the popularity of electric vehicles charges forward, Milbank will continue working with utilities, businesses and municipalities to ensure drivers stay connected to power across the country.**

## LEVEL 3

Level 3 charging level runs at 480 VAC with 70 Amp or higher breakers that are intended to fully charge vehicles in less than an hour. Because of the higher level of power requirements for these applications, the cabinets and componentry tend to be larger than for Level 2 charging.



# Communications

## *Macro and Micro*



### MACRO

Macro communication sites, like large cell towers, require high power demand utilized generator connects. Projects of this scale need a power distribution solution that can handle the size, but also the enhanced level of protection and security. Milbank's enclosed controls offer a solution that checks all the boxes and leaves room to add auxiliary power and entire command center, all in one unit.

### MICRO

Smaller applications, like small cell towers, are frequently in areas with a dense population where space is at a premium. For micro communications projects, Milbank has fully customizable enclosed controls in both surface- and pad-mount options with the added benefit of a much smaller footprint.



Photo courtesy of Jeff Jones,  
Bob Jones & Associates - Phoenix, AZ.





# Motor Controls

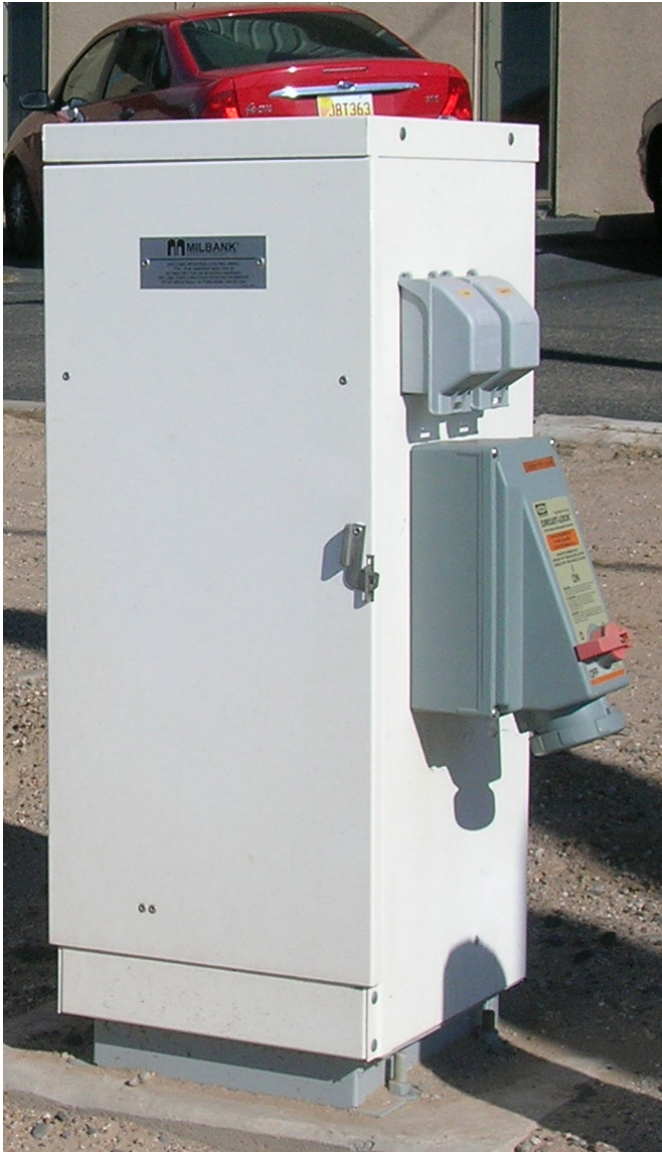


## MOTOR CONTROLS

From pumping stations to high-powered agricultural applications, motor controls need a power distribution solution with the option for a wide variety of configurations. While efficiency and security are standard features of Milbank enclosed controls, other features might include a soft start for remote locations or additional safety on heavy loads.



# Power Source Management



## POWER TRANSFER

Power transfer refers to the process of transferring electrical energy from one system or device to another. It involves the transmission and conversion of power to enable the supply of electricity from a source to a load or multiple loads.

Enclosed controls can successfully disconnect the primary source and transfer power to an alternate source, like a generator, to keep the energy flowing even when the power fails.



## MANUAL TRANSFER

Manual power source management allows the user to pull backup power from either the electrical network or a local power source, like a generator. Enclosed controls designated for power source management can feature interlocked breakers, rotary switches and multiple inlets for generator connections of different sizes.



## AUTO TRANSFER

Much like manual transfer products, enclosed controls with automatic transfer switches are designed for critical loads- or loads that can't be out for even the shortest period of time. Automatic transfer switches are designed to be connected to a permanently installed generator. This allows automatic transfer to an auxiliary source when the primary power fails.



## APPLICATIONS

Enclosed controls are the perfect vehicles to provide power source management for many applications:

- **Water pumps**
- **Generator applications**
- **Sewage pumps**
- **Critical infrastructure**
- **Traffic**
- **... and more**



Photos used with permission and courtesy of Excel Fluid Group, LLC



# Cabinet Sizes - CP3B

## Standard Units



Replace unsightly and inefficient strut and backboard systems with cost-effective, easy-to-install and visually appealing CP3B enclosed controls. The CP3B unit includes everything required for weather-resistant, remote site service while maintaining the highest level of safety and security.



## Catalog Logic

**CP3B**



Catalog logic is for reference only. For options not listed below, contact your Manufacturer's Rep. See page 51 for full catalog logic.

### 5. Enclosure Details

#### Position 5

- A** - 16"W x 17"D x 48"H - Single socket covered
- B** - 24"W x 17"D x 48"H - Single or double socket, covered
- K** - 32"W x 20"D x 60"H - Single or double socket, covered
- P** - 16"W x 17"D x 48"H - Single socket exposed
- R** - 24"W x 17"D x 48"H - Single or double socket, exposed
- S** - 32"W x 20"D x 60"H - Single or double socket, exposed
- E** - 16"W x 17"D x 41"H - Unmetered, low-profile
- M** - 24"W x 17"D x 41"H - Unmetered, low-profile
- Q** - 32"W x 20"D x 43.5" - Unmetered

### 6. Meter Socket

#### Position 6

- 0** - No meter socket
- 1** - 1 ring type socket (with test bypass)
- 2** - 2 ring type sockets (with test bypass)
- 3** - 2 ring type sockets (without test bypass)
- 4** - 1 ring type socket (without test bypass)
- 5** - 1 ringless socket (with lever bypass)
- 6** - 2 ringless sockets (with lever bypass)
- 7** - 1 ringless socket (without test bypass)
- 8** - 1 bolt-on meter (K-Base)
- 9** - 1 ringless socket (-KK horn bypass)
- A** - 2 ringless sockets (-KK horn bypass)

### 7. Socket Config.

#### Position 7 - Socket Configuration | Meter Forms | Self-contained (SC) or Transformer-Rated (TR)

- 0** - No meter socket
- 1** - 4 jaw | 1s,2s | SC
- 2** - 4 jaw (neutral center) | 1s,2s | SC
- 3** - 5 jaw (5th in 6 o'clock) | 3s | SC
- 4** - 5 jaw (5th in 9 o'clock) | 3s | SC
- 5** - 7 jaw | 14s, 15s, 16s, 17s, 24s | SC
- 6** - 8 jaw | 5s, 35s, 45s | SC

Please consult serving utility for their requirements prior to ordering or installing, as specifications and approvals vary by utility, and may require local electrical inspector approval. All installations must be installed by a licensed electrician and must comply with all national and local codes, laws and regulations. Milbank reserves the right to make changes in specifications and features shown without notice or obligation.



## Features and Options

- Available with 120/240V 1Ø3W through 277/480V 3Ø4W ratings.
- Available in Unmetered, metered or dual-metered units.
- Hooded or exposed-meter options available.
- Choice of EUSERC ring type or ringless meter sockets.
- Padlockable, isolated utility compartments.
- GFCI convenience receptacle for added protection.
- Lockable recessed generator receptacle door for added security.
- Galvanized steel, aluminum or stainless steel cabinet options.

## Applications



Communications  
Power  
Distribution



Traffic Signals



Lighting  
Control

### 8. Volt (L:L/L:N)

*Position 8 - Volt (L:L/L:N) | Phase | Wires*

- 1** - 120V (L:N) | 1Ø | 2W
- 2** - 240/120V | 1Ø | 3W
- 3** - 208/120 no network | 1Ø | 3W4

- 4** - 208/120V wye | 3Ø | 4W
- 5** - 480/277V wye | 3Ø | 4W
- 6** - 600/347V wye | 3Ø | 4W

- A** - 208/120V Δ (no neutral) | 3Ø | 3W
- B** - 240/208/120V Δ | 3Ø | 4W
- C** - 480/277V Δ (no neutral) | 3Ø | 3W
- D** - 480/415/240V Δ | 3Ø | 4W

### 9. Amps

*Position 9*

- 0** - No rating
- 1** - 100A
- 2** - 200A
- 3** - 125A
- 4** - 400A
- 6** - 600A

### 10. Main

*Position 10*

- 1** - (1) circuit breaker main
- 2** - (2) circuit breaker main
- 3** - (3) circuit breaker main
- 4** - (4) circuit breaker main
- 5** - (5) circuit breaker main
- A** - (1) fused main disconnect
- B** - (2) fused main disconnect
- C** - (3) fused main disconnect
- D** - (4) fused main disconnect
- E** - (5) fused main disconnect
- F** - (6) fused main disconnect
- K** - Interlocked main

Please consult serving utility for their requirements prior to ordering or installing, as specifications and approvals vary by utility, and may require local electrical inspector approval. All installations must be installed by a licensed electrician and must comply with all national and local codes, laws and regulations. Milbank reserves the right to make changes in specifications and features shown without notice or obligation.



# Cabinet Sizes - CP3A

## Slimline Pedestals



### SLIMLINE PEDESTALS

Provides a sleeker, smaller footprint, with wireway access on the side of the unit rather than the back. This allows maximum flexibility to place the pedestal anywhere physical space is at premium. Our Slimline series provides an Unmetered AC power distribution, surge suppression, mechanical interlock and standby generator receptacle all in one neat, compact pedestal.

**Direct bury bases** offer many advantages. With no need to coordinate, buy or wait for concrete, installation time can be cut down to less than an hour. Traditional direct bury pedestals are awkward to transport and handle and can only be used in a direct bury application. Milbank's modular design offers flexibility and convenience for distributors and contractors alike. It's constructed with 14-gauge steel and only available for 12-inch pedestals.



## Catalog Logic

**CP3A** **5** **6** **7** **8** **9** **10**

Catalog logic is for reference only. For options not listed below, contact your Manufacturer's Rep. See page 51 for full catalog logic.

### 5. Enclosure Details

#### Position 5

- A** - 12"W x 8.25"D x 63"H - Single socket covered
- B** - 20"W x 8.25"D x 63"H - Single socket covered
- C** - 20"W x 10.25"D x 52"H - Single socket covered
- I** - 12"W x 8.25"D x 50"H - Single socket covered
- J** - 20"W x 8.25"D x 50"H - Single socket covered
- K** - 12"W x 8.25"D x 63"H - Single socket exposed
- L** - 20"W x 8.25"D x 63"H - Single socket exposed
- M** - 12"W x 8.25"D x 50"H - Single socket exposed
- N** - 20"W x 8.25"D x 50"H - Single socket exposed
- O** - 12"W x 8.25"D x 43"H - Unmetered
- P** - 20"W x 8.25"D x 43"H - Unmetered

### 6. Meter Socket

#### Position 6

- 0** - No meter socket
- 1** - 1 ring type socket (with test bypass)
- 4** - 1 ring type socket (without bypass)
- 5** - 1 ringless socket (with lever bypass)
- 7** - 1 ringless socket (without bypass)
- 9** - 1 ringless socket (-KK horn bypass)

### 7. Socket Config.

#### Position 7 - Socket Configuration | Meter Forms | Self-contained (SC) or Transformer-Rated (TR)

- 0** - No meter socket
- 1** - 4 jaw | 1s, 2s | SC
- 2** - 4 jaw (neutral center) | 1s, 2s | SC
- 3** - 5 jaw (5th in 6 o'clock) | 3s | SC
- 4** - 5 jaw (5th in 9 o'clock) | 3s | SC
- 5** - 7 jaw | 14s, 15s, 16s, 17s, 24s | SC
- 6** - 8 jaw | 5s, 35s, 45s | SC

Please consult serving utility for their requirements prior to ordering or installing, as specifications and approvals vary by utility, and may require local electrical inspector approval. All installations must be installed by a licensed electrician and must comply with all national and local codes, laws and regulations. Milbank reserves the right to make changes in specifications and features shown without notice or obligation.



## Features and Options

- Available in 100 or 200 Amp.
- Vandal-resistant, secure and attractive design.
- Isolated lockable and sealable utility metering protected with a hinged hood.
- Separate customer compartment design to hold distribution control equipment.
- Contained to a small, efficient footprint.
- Wireway located on left side of pedestal for utility incoming wire. This allows pedestal to be mounted with back within 14 inches of walls or structures.
- Available in 12- and 20-inch widths and 50- and 63-inch (metered) and 43-inch (Unmetered) heights.
- Available voltage range between 120V–480V.
- Compatible with both ringless and ring type meter sockets with 4–7 terminals.
- Pedestal mounting base option saves installation time and labor—no anchor bolts required.
- Powder coated G90 galvanized steel or aluminum; raw, anodized or powder-coated, as well as stainless steel exterior options.

## Applications



Water Treatment  
Plants



Highways



Parks and  
Landscaping

### 8. Volt (L:L/L:N)

*Position 8 - Volt (L:L/L:N) | Phase | Wires*

- 1** - 120V (L:N) | 1Ø | 2W
  - 2** - 240/120V | 1Ø | 3W
  - 3** - 208/120 no network | 1Ø | 3W
- 
- 4** - 208/120V wye | 3Ø | 4W
  - 5** - 480/277V wye | 3Ø | 4W
  - 6** - 600/347V wye | 3Ø | 4W

- A** - 208/120V Δ (no neutral) | 3Ø | 3W
- B** - 240/208/120V Δ | 3Ø | 4W
- C** - 480/277V Δ (no neutral) | 3Ø | 3W
- D** - 480/415/240V Δ | 3Ø | 4W

### 9. Amps

*Position 9*

- 0** - No rating
- 1** - 100A
- 2** - 200A
- 3** - 125A

### 10. Main

*Position 10*

- 1** - (1) circuit breaker main
- A** - (1) fused main disconnect
- K** - Interlocked main

Please consult serving utility for their requirements prior to ordering or installing, as specifications and approvals vary by utility, and may require local electrical inspector approval. All installations must be installed by a licensed electrician and must comply with all national and local codes, laws and regulations. Milbank reserves the right to make changes in specifications and features shown without notice or obligation.

# Cabinet Sizes - CP2B

## Surface-Mount Enclosed Controls

Originally developed for small cellular communications, the surface-mount enclosed control offers the flexibility of larger enclosed controls products with a smaller footprint and several mounting options.



Space efficient with a smaller footprint.

Fully enclosed meter and components.

Flexible side wireways with OH/UG entry and exit.

### Catalog Logic

**CP2B** 5 6 7 8 9 10

Catalog logic is for reference only. For options not listed below, contact your Manufacturer's Rep. See page 51 for full catalog logic.

#### 5. Enclosure Details

##### Position 5

- N** - 20"W x 8.25"D x 50"H - Top/bottom | entry/exit
- O** - 34.5"W x 7.4"D x 47.15"H - Side by side

#### 6. Meter Socket

##### Position 6

- 0** - No meter socket
- 1** - 1 ring type socket (with test bypass)
- 4** - 1 ring type socket (without bypass)
- 5** - 1 ringless socket (with lever bypass)
- 7** - 1 ringless socket (without bypass)
- 9** - 1 ringless socket (-KK horn bypass)

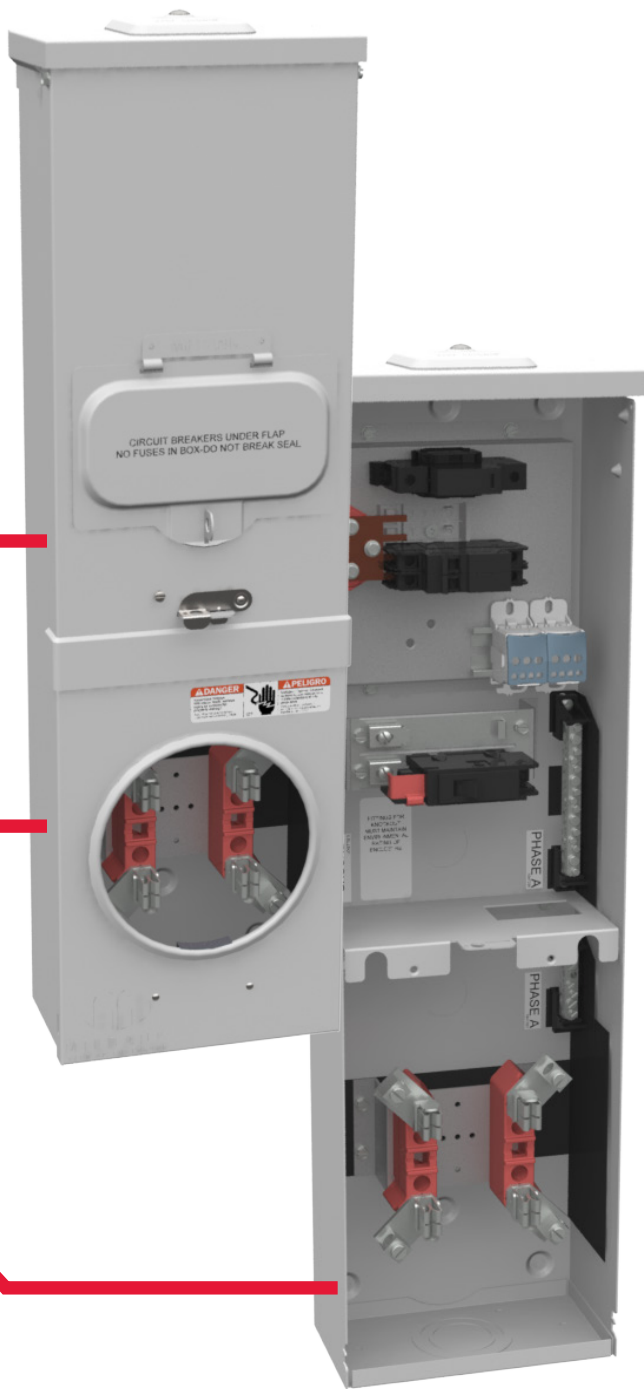
#### 7. Socket Config.

##### Position 7 - Socket Configuration | Meter Forms | Self-contained (SC) or Transformer-Rated (TR)

- 0** - No meter socket
- 1** - 4 jaw | 1s,2s | SC
- 2** - 4 jaw (neutral center) | 1s,2s | SC
- 3** - 5 jaw (5th in 6 o'clock) | 3s | SC
- 4** - 5 jaw (5th in 9 o'clock) | 3s | SC
- 5** - 7 jaw | 14s, 15s, 16s, 17s, 24s | SC
- 6** - 8 jaw | 5s, 35s, 45s | SC

Please consult serving utility for their requirements prior to ordering or installing, as specifications and approvals vary by utility, and may require local electrical inspector approval. All installations must be installed by a licensed electrician and must comply with all national and local codes, laws and regulations. Milbank reserves the right to make changes in specifications and features shown without notice or obligation.





## Features and Options

- Pedestal style with side wireway.
- Self-contained meter and components available up to 200 Amp.
- Designed for small cell applications.
- Available in Unmetered and exposed metered units.
- Easy installation - overhead and underground entry and exit.
- UL508A and UL891 - custom component configurations, UL listing covers all internal components.
- Can be mounted on multiple surfaces - walls, poles, H Frames (Strut).
- Multiple bypass and monitoring options available.

## Benefits

- Does not take up sidewalk space.
- Resistant to floods and other extreme weather conditions.
- Eliminates need for connecting components, just wire in - wire out.

## Applications



Communications  
Power  
Distribution



Lighting  
Control



Streetscape  
Power  
Distribution

### 8. Volt (L:L/L:N)

Position 8 - Volt (L:L/L:N) | Phase | Wires

- 1 - 120V (L:N) | 1Ø | 2W
- 2 - 240/120V | 1Ø | 3W
- 3 - 208/120 no network | 1Ø | 3W

- 4 - 208/120V wye | 3Ø | 4W
- 5 - 480/277V wye | 3Ø | 4W
- 6 - 600/347V wye | 3Ø | 4W

- A - 208/120V Δ (no neutral) | 3Ø | 3W
- B - 240/208/120V Δ | 3Ø | 4W
- C - 480/277V Δ (no neutral) | 3Ø | 3W
- D - 480/415/240V Δ | 3Ø | 4W

### 9. Amps

Position 9

- 0 - No rating
- 1 - 100A
- 2 - 200A
- 3 - 125A

### 10. Main

Position 10

- 1 - (1) circuit breaker main
- 2 - (2) circuit breaker main
- A - (1) fused main disconnect
- F - (6) fused main disconnect
- K - Interlocked main

Please consult serving utility for their requirements prior to ordering or installing, as specifications and approvals vary by utility, and may require local electrical inspector approval. All installations must be installed by a licensed electrician and must comply with all national and local codes, laws and regulations. Milbank reserves the right to make changes in specifications and features shown without notice or obligation.

# Cabinet Sizes - CP3C

Flex-Ped



Milbank works directly with Departments of Transportation (DOT) to create customized solutions according to their unique set of needs. These pedestals provide installers with the added benefits of flexible placement, as they require less clearance.

The CP3C is also a solution that works for areas experiencing colder temperatures and snow- Milbank has custom designed these for parts of Minnesota and Massachusetts, where the weather is often an obstacle. The base of this product has extra ground clearance, allowing access to the contents even if there's snow on the ground.

## Catalog Logic

### CP3C 5 6 7 8 9 10

Catalog logic is for reference only. For options not listed below, contact your Manufacturer's Rep. See page 51 for full catalog logic.

#### 5. Enclosure Details

Position 5

- A** - 26"W x 14"D x 62.12"H - 1 SC  
meter in side wireway no rear doors
- B** - 33"W x 14"D x 62.12"H - 1 SC  
meter in side wireway no rear doors
- C** - 40"W x 14"D x 62.12"H - 1 SC  
meter in side wireway no rear doors
- D** - 20"W x 14"D x 62.12"H - Unmetered
- E** - 27"W x 14"D x 62.12"H - Unmetered
- F** - 34"W x 14"D x 62.12"H - Unmetered
- H** - 58"Wx39"Dx67.5"H - 1 or 2 SC  
meters up to 150kva internal xfmr
- J** - 46"Wx39"Dx67.5"H - Unmetered  
up to 150kva internal xfmr

#### 6. Meter Socket

Position 6

- 0** - No meter socket
- 3** - 2 ring type sockets (without bypass)
- 4** - 1 ring type socket (without bypass)
- 5** - 1 ringless socket (with lever bypass)
- 6** - 2 ringless sockets (with lever bypass)
- 7** - 1 ringless socket (without bypass)
- 9** - 1 ringless socket (-KK horn bypass)
- A** - 2 ringless sockets (-KK horn bypass)

#### 7. Socket Config.

Position 7 - Socket Configuration | Meter Forms | Self-contained (SC) or Transformer-Rated (TR)

- 0** - No meter socket
- 1** - 4 jaw | 1s,2s | SC
- 2** - 4 jaw (neutral center) | 1s,2s | SC
- 3** - 5 jaw (5th in 6 o'clock) | 3s | SC
- 4** - 5 jaw (5th in 9 o'clock) | 3s | SC
- 5** - 7 jaw | 14s, 15s, 16s, 17s, 24s | SC
- 6** - 8 jaw | 5s, 35s, 45s | SC

Please consult serving utility for their requirements prior to ordering or installing, as specifications and approvals vary by utility, and may require local electrical inspector approval. All installations must be installed by a licensed electrician and must comply with all national and local codes, laws and regulations. Milbank reserves the right to make changes in specifications and features shown without notice or obligation.





## Features and Options

- Available up to 400 Amp.
- Type 3R rainproof, tamper-resistant cabinet of polyurethane, powder-coated steel.
- UL listed under UL508 as enclosed industrial control equipment.
- Isolated lockable and sealable utility metering and lug landing sections.
- Separate customer compartment design to hold distribution control equipment.
- Most load centers are UL listed for use with various manufacturers' circuit breakers.
- All stainless-steel external hardware (screws, bolts, hinges, handles, hasps and sealing screws).

## Benefits

- Customizable to meet more DOT standards.
- Design allows for flexible placement.
- Seamless transfer from metered to Unmetered.

## Applications



Communications  
Power  
Distribution



Traffic Signals



Lighting  
Control

### 8. Volt (L:L/L:N)

*Position 8 - Volt (L:L/L:N) | Phase | Wires*

- 1** - 120V (L:N) | 1Ø | 2W
- 2** - 240/120V | 1Ø | 3W
- 3** - 208/120 no network | 1Ø | 3W

- 4** - 208/120V wye | 3Ø | 4W
- 5** - 480/277V wye | 3Ø | 4W
- 6** - 600/347V wye | 3Ø | 4W

- A** - 208/120V Δ (no neutral) | 3Ø | 3W
- B** - 240/208/120V Δ | 3Ø | 4W
- C** - 480/277V Δ (no neutral) | 3Ø | 3W
- D** - 480/415/240V Δ | 3Ø | 4W

### 9. Amps

*Position 9*

- 0** - No rating
- 1** - 100A
- 2** - 200A
- 3** - 125A
- 4** - 400A
- 6** - 600A\*
- 8** - 800A\*

\*Dual-metered units only

### 10. Main

*Position 10*

- 1** - (1) circuit breaker main
- 2** - (2) circuit breaker main
- 3** - (3) circuit breaker main
- 4** - (4) circuit breaker main
- 5** - (5) circuit breaker main
- A** - (1) fused main disconnect
- B** - (2) fused main disconnect
- C** - (3) fused main disconnect
- D** - (4) fused main disconnect
- E** - (5) fused main disconnect
- F** - (6) fused main disconnect
- K** - Interlocked main

Please consult serving utility for their requirements prior to ordering or installing, as specifications and approvals vary by utility, and may require local electrical inspector approval. All installations must be installed by a licensed electrician and must comply with all national and local codes, laws and regulations. Milbank reserves the right to make changes in specifications and features shown without notice or obligation.

# Cabinet Sizes - CP3D

## Data Cabinet Plus



Applications like concert power and recreational facilities require a power distribution solution that's big enough to handle all the necessary components. Milbank's CP3D was originally designed as a data cabinet but has since evolved into a versatile unit with a variety of customizations available.



## Catalog Logic

### CP3D 5 6 7 8 9 10

Catalog logic is for reference only. For options not listed below, contact your Manufacturer's Rep. See page 51 for full catalog logic.

#### 5. Enclosure Details

##### Position 5

- A** - 44"W x 24"D x 60"H - Hooded meter 2-door (60"T)
- B** - 44"W x 24"D x 60"H - Exposed meter 2-door (60"T)
- C** - 44"W x 24"D x 60"H - No meter 2-door (60"T)
- D** - 44"W x 24"D x 60"H - Hooded meter 3-door (60"T)
- E** - 44"W x 24"D x 60"H - Exposed meter 3-door (60"T)
- F** - 44"W x 24"D x 60"H - Unmetered 3-door
- L** - 44"W x 24"D x 60"H - Unmetered 4-door (60"T)
- N** - 44"W x 24"D x Varied - Non-standard

#### 6. Meter Socket

##### Position 6

- 0** - No meter socket
- 1** - 1 ring type socket (with test bypass)
- 2** - 2 ring type sockets (with test bypass)
- 3** - 2 ring type sockets (without test bypass)
- 4** - 1 ring type socket (without test bypass)
- 5** - 1 ringless socket (with lever bypass)
- 6** - 2 ringless sockets (with lever bypass)
- 7** - 1 ringless socket (without test bypass)
- 8** - 1 bolt-on meter (K-Base)
- 9** - 1 ringless socket (-KK horn bypass)
- A** - 2 ringless sockets (-KK horn bypass)

#### 7. Socket Config.

##### Position 7 - Socket Configuration | Meter Forms | Self-contained (SC) or Transformer-Rated (TR)

- 0** - No meter socket
- 1** - 4 jaw | 1s,2s | SC
- 2** - 4 jaw (neutral center) | 1s,2s | SC
- 3** - 5 jaw (5th in 6 o'clock) | 3s | SC
- 4** - 5 jaw (5th in 9 o'clock) | 3s | SC
- 5** - 7 jaw | 14s, 15s, 16s, 17s, 24s | SC
- 6** - 8 jaw | 5s, 35s, 45s | SC

Please consult serving utility for their requirements prior to ordering or installing, as specifications and approvals vary by utility, and may require local electrical inspector approval. All installations must be installed by a licensed electrician and must comply with all national and local codes, laws and regulations. Milbank reserves the right to make changes in specifications and features shown without notice or obligation.





## Features and Options

- Available up to 400 amps metered and 800 amps unmetered
- 19-inch-wide rack in customer compartment with designated battery trays.
- Service shelving for organization and display of equipment.

## Benefits

- Customizable for project flexibility.
- Cabinet design allows for additional space.
- Enhanced safety and cost-effective design.

## Applications



Communications  
Power  
Distribution



Lighting  
Control



Data  
Applications

### 8. Volt (L:L/L:N)

*Position 8 - Volt (L:L/L:N) | Phase | Wires*

- 1** - 120V (L:N) | 1Ø | 2W
- 2** - 240/120V | 1Ø | 3W
- 3** - 208/120 no network | 1Ø | 3W

- 4** - 208/120V wye | 3Ø | 4W
- 5** - 480/277V wye | 3Ø | 4W
- 6** - 600/347V wye | 3Ø | 4W

- A** - 208/120V Δ (no neutral) | 3Ø | 3W
- B** - 240/208/120V Δ | 3Ø | 4W
- C** - 480/277V Δ (no neutral) | 3Ø | 3W
- D** - 480/415/240V Δ | 3Ø | 4W

### 9. Amps

*Position 9*

- 0** - No Rating
- 1** - 100A
- 2** - 200A
- 3** - 125A
- 4** - 400A
- 6** - 600A
- 7** - 800A

### 10. Main

*Position 10*

- 1** - (1) circuit breaker main
- 2** - (2) circuit breaker main
- 3** - (3) circuit breaker main
- A** - (1) fused main disconnect
- B** - (2) fused main disconnect
- C** - (3) fused main disconnect
- K** - Interlocked main

Please consult serving utility for their requirements prior to ordering or installing, as specifications and approvals vary by utility, and may require local electrical inspector approval. All installations must be installed by a licensed electrician and must comply with all national and local codes, laws and regulations. Milbank reserves the right to make changes in specifications and features shown without notice or obligation.

# Cabinet Sizes - CP3F

## CT Metered Pedestals

Designed to be used where a smaller service package would be a better choice over larger switchgear equipment, these pedestals have amperage ratings of 400 to 800 Amps at voltages up through 480V three phase.



## Catalog Logic

**CP3F** 5 6 7 8 9 10

Catalog logic is for reference only. For options not listed below, contact your Manufacturer's Rep. See page 51 for full catalog logic.

### 5. Enclosure Details

- A** - 46"W x 27"D x 64"H - Exposed embedded socket
- B** - 46"W x 39"D x 64"H - Exposed embedded socket - internal xfmr
- C** - 64"W x 39"D x 64"H - Exposed embedded socket
- F** - 56"W x 27"D x 64"H - Covered embedded socket
- G** - 56"W x 39"D x 64"H - Covered embedded socket - internal xfmr
- H** - 74"W x 39"D x 64"H - Covered embedded socket
- L** - 46"W x 27"D x 64"H - Unmetered or surface-mounted socket
- M** - 46"W x 39"D x 64"H - Unmetered or surface-mounted socket - internal xfmr
- N** - 64"W x 39"D x 64"H - Unmetered or surface-mounted socket
- T** - 42"W x 24"D x 64"H (3Ø 800A) - Covered socket (forward facing)
- Y** - 32"W x 24"D x 64"H (CT Metered) - Covered socket (forward facing)
- Z** - 42"W x 24"D x 64"H (CT Metered) - Covered socket (forward facing)

### 6. Meter Socket

- 0** - No meter socket
- B** - 1 ring type socket (w/ test switches)
- C** - 1 ringless type socket (w/ test switches)

### 7. Socket Config.

*Position 7 - Socket Configuration | Meter Forms Self-contained (SC) or Transformer-Rated (TR)*

- 0** - No meter socket

- A** - 6 jaw | 4s | TR
- B** - 8 jaw | 5s, 35s, 45s | TR
- C** - 13 jaw | 6s, 8s, 9s, 10s, 29s, 36s, 46s | TR
- D** - 15 jaw | 11s, 39s, 76s | TR

Please consult serving utility for their requirements prior to ordering or installing, as specifications and approvals vary by utility, and may require local electrical inspector approval. All installations must be installed by a licensed electrician and must comply with all national and local codes, laws and regulations. Milbank reserves the right to make changes in specifications and features shown without notice or obligation.



## Features and Options

- Available up to 800 Amp.
- A low-profile CT pedestal for project flexibility.
- All utility equipment is isolated in separated packlockable and sealable compartments.
- Separate customer compartment design to hold distribution control equipment.
- Deadfront for customer protection.
- Optional mounting base.

## Applications



Commercial and  
Industrial Control  
Systems



Electric Vehicle  
Charging Stations



Water Treatment  
Plants



Pump and Lift  
Stations

### 8. Volt (L:L/L:N)

*Position 8 - Volt (L:L/L:N) | Phase | Wires*

- 2** - 240/120V | 1Ø | 3W
- 3** - 208/120 no network | 1Ø | 3W

- 4** - 208/120V wye | 3Ø | 4W
- 5** - 480/277V wye | 3Ø | 4W
- 6** - 600/347V wye | 3Ø | 4W

- A** - 208/120V Δ (no neutral) | 3Ø | 3W
- B** - 240/208/120V Δ | 3Ø | 4W
- C** - 480/277V Δ (no neutral) | 3Ø | 3W
- D** - 480/415/240V Δ | 3Ø | 4W

### 9. Amps

- 0** - No rating
- 1** - 100A
- 2** - 200A
- 3** - 125A
- 4** - 400A
- 6** - 600A
- 8** - 800A

### 10. Main

- 1** - (1) circuit breaker main
- 2** - (2) circuit breaker main
- 3** - (3) circuit breaker main
- 4** - (4) circuit breaker main
- 5** - (5) circuit breaker main
- A** - (1) fused main disconnect
- B** - (2) fused main disconnect
- C** - (3) fused main disconnect
- D** - (4) fused main disconnect
- E** - (5) fused main disconnect
- F** - (6) fused main disconnect
- K** - Interlocked main

Please consult serving utility for their requirements prior to ordering or installing, as specifications and approvals vary by utility, and may require local electrical inspector approval. All installations must be installed by a licensed electrician and must comply with all national and local codes, laws and regulations. Milbank reserves the right to make changes in specifications and features shown without notice or obligation.

# Cabinet Sizes - CP3G

## Battery Backup Enclosed Controls



Our CP3G is a battery backup product designed to power various loads and to switch specific loads on and off under certain conditions. For example, the pedestal could use a photoelectric cell or time clock to control lighting circuits. Metered and Unmetered power configurations are available. The back up power pedestal is engineered to handle traffic signal and some street lighting back up power requirements. Units include a 19-inch rack for DC to AC inverters and switches, shelving space to house the battery systems and a configurable distribution section to meet the exact site requirements. This design gives the user a wide range of configuration options from turnkey ready-to-energize to more basic units allowing for customer installed equipment.

### OPTIONS

- Manual bypass switch
- Photo electric controls
- Time clocks
- HOA switches
- Contactors
- GFCI duplex receptacles
- Thermostat for heating control
- Heating pads or elements
- Roll out shelves for batteries
- Police access door
- Surge arresters
- Lighting arresters

## Catalog Logic

**CP3G** **5** **6** **7** **8** **9** **10**

Catalog logic is for reference only. For options not listed below, contact your Manufacturer's Rep. See page 51 for full catalog logic.

### 5. Enclosure Details

#### Position 5

- A** - 36"W x 20"D x 60"H - 1 or 2 sockets (side batteries)
- B** - 36"W x 20"D x 60"H - 1 or 2 sockets (front facing equipment)
- F** - 30"W x 24"D x 48"H - 1 socket - front to back design
- G** - 30"W x 24"D x 54"H - 1 socket - front to back design sloped top

### 6. Meter Socket

#### Position 6

- 0** - No meter socket
- 1** - 1 ring type socket (with test bypass)
- 2** - 2 ring type sockets (with bypass)
- 3** - 2 ring type sockets (without bypass)
- 4** - 1 ring type socket (without bypass)
- 5** - 1 ringless socket (with lever bypass)
- 6** - 2 ringless sockets (with lever bypass)
- 7** - 1 ringless socket (without bypass)
- 9** - 1 ringless socket (-KK horn bypass)
- A** - 2 ringless sockets (-KK horn bypass)

### 7. Socket Config.

#### Position 7 - Socket Configuration | Meter Forms | Self-contained (SC) or Transformer-Rated (TR)

- 0** - No meter socket
- 1** - 4 jaw | 1s,2s | SC
- 2** - 4 jaw (neutral center) | 1s,2s | SC
- 3** - 5 jaw (5th in 6 o'clock) | 3s | SC
- 4** - 5 jaw (5th in 9 o'clock) | 3s | SC
- 5** - 7 jaw | 14s, 15s, 16s, 17s, 24s | SC
- 6** - 8 jaw | 5s, 35s, 45s | SC

Please consult serving utility for their requirements prior to ordering or installing, as specifications and approvals vary by utility, and may require local electrical inspector approval. All installations must be installed by a licensed electrician and must comply with all national and local codes, laws and regulations. Milbank reserves the right to make changes in specifications and features shown without notice or obligation.





## Features and Options

- Includes transfer switch for generator backup between 30-200 Amp applications.
- Tamper-resistant with padlockable provision for receptacles.
- Available in Unmetered or metered load center distribution.
- Separate sealable utility termination compartment.
- Up to 320 Amp meter socket with the option of a ring type socket (conforms to EUSERC 308) with or without test/bypass blocks; or a heavy-duty ringless socket with lever bypass.
- Isolated customer section with service disconnects, power distribution options and power control.
- 19-inch-wide rack in customer compartment with designated battery trays.
- Thermostat with cooling fan and filtered louvers for ventilation.

## Applications



Traffic Signals



Parking Lots



Camera and Security Locations



Communications Power Distribution

### 8. Volt (L:L/L:N)

Position 8 - Volt (L:L/L:N) | Phase | Wires

- 1 - 120V (L:N) | 1Ø | 2W
- 2 - 240/120V | 1Ø | 3W
- 3 - 208/120 no network | 1Ø | 3W

- 4 - 208/120V wye | 3Ø | 4W
- 5 - 480/277V wye | 3Ø | 4W
- 6 - 600/347V wye | 3Ø | 4W

- A - 208/120V Δ (no neutral) | 3Ø | 3W
- B - 240/208/120V Δ | 3Ø | 4W
- C - 480/277V Δ (no neutral) | 3Ø | 3W
- D - 480/415/240V Δ | 3Ø | 4W

### 9. Amps

Position 9

- 0 - No rating
- 1 - 100A
- 2 - 200A
- 3 - 125A
- 4 - 400A\*

\*Dual-metered units only

### 10. Main

Position 10

- 1 - (1) circuit breaker main
- 2 - (2) circuit breaker main
- 3 - (3) circuit breaker main
- 4 - (4) circuit breaker main
- 5 - (5) circuit breaker main
- A - (1) fused main disconnect
- B - (2) fused main disconnect
- C - (3) fused main disconnect
- D - (4) fused main disconnect
- E - (5) fused main disconnect
- F - (6) fused main disconnect
- K - Interlocked main

Please consult serving utility for their requirements prior to ordering or installing, as specifications and approvals vary by utility, and may require local electrical inspector approval. All installations must be installed by a licensed electrician and must comply with all national and local codes, laws and regulations. Milbank reserves the right to make changes in specifications and features shown without notice or obligation.

# Materials and Colors

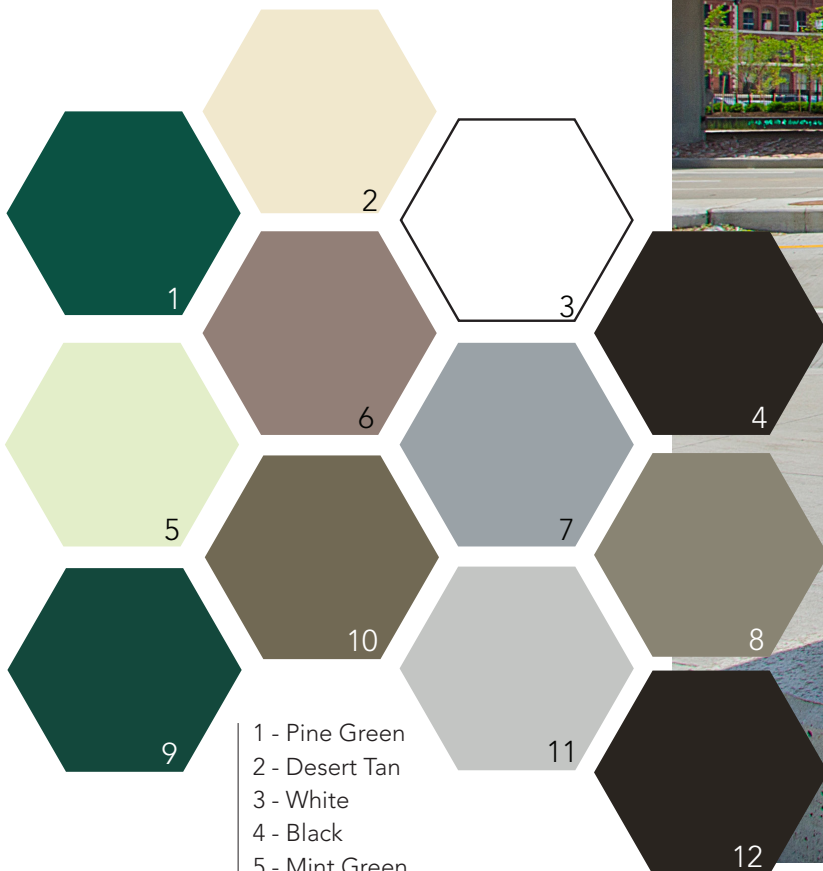
## AVAILABLE COLORS

Milbank offers standardized colors to all customers at no additional cost. Below are close approximations of the colors available.

*Please Note: The color chips below may vary slightly in color or gloss from actual coatings due to the effects of heat, light and the manufacturing process. Please contact your sales representative for more information.*

## FINISHES

Milbank typically finishes products with powder-coated paint for galvanized steel and aluminum enclosures and also offers a stainless steel option. Our new anodized aluminum paint process provides a more environmentally friendly and more consistent finish.



- 1 - Pine Green
- 2 - Desert Tan
- 3 - White
- 4 - Black
- 5 - Mint Green
- 6 - Summerland Gray
- 7 - Gray
- 8 - Anodized Champagne
- 9 - Moss Green
- 10 - Anodized LT Bronze
- 11 - Anodized Clear II
- 12 - Anodized Black







## PAINT

All of Milbank's finished products have a powder-coated exterior. Powder-coating is more environmentally friendly than liquid-based applications and more durable in harsh outdoor conditions.

## CUSTOM COLORS

Custom colors are available upon request. Any deviation from standardized colors can affect the overall price and manufacturing time. Please note for custom color inquiries, RAL colors are preferred. For more information contact your local Milbank Manufacturing representative.

## UNFINISHED

Aluminum and stainless steel are available as unpainted or unfinished products.





# Products and Lead Times

## *Stock, Standard and Custom Products*



Although stock and standard are often used interchangeably, they are actually two different types of products. In addition to stock and standard products, Milbank also offers custom solutions.

### STOCK

Stock units are already made and ready-to-ship. These are sent either directly from Milbank, or currently available from one of our distributors. Stock units are not customizable. There is no wait time for stock products.

### STANDARD (BUILD TO ORDER)

Standard products are products that are already designed by Milbank engineers and ready to build. These cannot be customized in any way- features cannot be added or removed. The lead time for standard products is longer than stock products, but much quicker than custom lead times.

### CUSTOM (ENGINEERED TO ORDER)

Custom products are designed by Milbank engineers, according to the specific guidelines for a designated project. Custom projects have the longest wait time, as they're tailored to your project and designed specifically for you by our engineers.

## Milbank Express

### Skip the Lead Times

With our new line of standard enclosed controls built exclusively for Milbank Express. Each Milbank Express unit is designed by Milbank engineers and manufactured in our plant to ensure it is meeting our standards of performance and quality. Accessories are available for field customization, allowing you to create a product that's tailored to your specific project needs.



Fast  
Turnaround



Field  
Customizable



Tailored  
Power Distribution



LEARN



MORE!



# A History of Enclosed Controls



For nearly a century, Milbank Manufacturing has proudly provided its consumers with outstanding products that have been held to the highest standard of quality. Milbank has expanded their product portfolio from pedestals for freeway lights and signs to more advanced focuses such as enclosed controls for electric vehicle charging stations and telecommunications.

John Siglock, Milbank's Vice President of Research and Development, and Dave Stipe, District Sales Manager, brought Milbank into the enclosed controls market when they saw an opening to improve on an existing product.



Milbank's first enclosed control pedestal originated in Southern California, at the request of the Department of Transportation. Rolling blackouts in the early 90s inspired Cal Trans to look for an optimized method to ensure power was maintained in essential technologies, even when the power failed. Milbank custom-engineered a commercial pedestal with battery backup to fit the specific needs of this project.

Milbank enclosed controls were quickly becoming a solution across the country. Enclosed controls allowed municipalities, DOTs, utilities and more, to utilize these efficient, reduced footprint and cost-effective power distribution solutions.

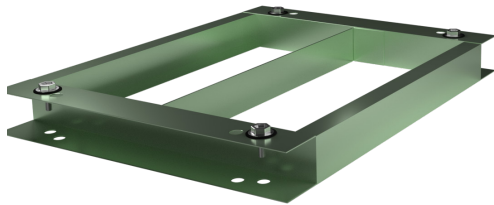


Milbank is committed to manufacturing metering needs, enclosures, and enclosed controls to meet the demands of our world's evolving electrical needs. Our brand started with service pedestals but now offers over 16,000 products, including customizable power distribution solutions in expanding markets like electric vehicles.

Good enough doesn't work here. We strive toward excellence—in our relationships, in our production, in our product development, in our operations, in our resource management—on our journey of continuous improvement.

# Standardized Accessories

Standardized accessories are available for Milbank Express products. These accessories allow units to be tailored to your application during the installation process.

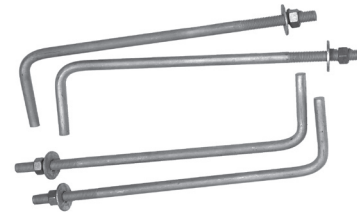


## Mounting Bases\*

**CP-16PDMNT-CALT** - 16" pedestal mounting base

**CP-24PDMNT-CALT** - 24" pedestal mounting base

**CP-32PDMNT** - 32" pedestal mounting base



## CP-ABK5/8

Anchor bolt kit with four 5/8 - 13" x 18" anchor bolts.



## 105J

Fifth terminal kit for use with ring type meter sockets.



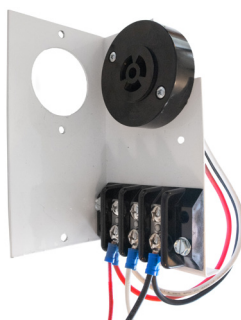
## Time Clocks

Please view Milbank Express landing page below for available models.



## K3865

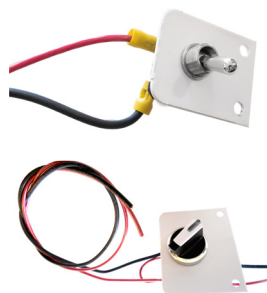
Fifth terminal kit for use with ringless lever bypass meter sockets.



## PE Control Kits

**CP-PE-TYP5-2POS** - 2 Position Switch

**CP-PE-HOA-3POS** - 3 Position HOA Switch



## ME-EK4536

Plug in photocell, LED compatible



Additional enclosed controls accessories are available on the Milbank Express website. Visit Milbank Express via QR code or [https://www.milbankworks.com/milbank\\_express](https://www.milbankworks.com/milbank_express)

\*Additional base sizes available, check with your local rep for more info.  
Bases available for all Milbank enclosed controls.  
All bases include mounting hardware.



# The Process



## SALES

The Milbank Sales Team is the main point of contact for customers who need enclosed control products for their upcoming projects. The sales team facilitates the communication between the customer and Milbank production facility to ensure the enclosed controls are designed to follow the customer's exact specifications. The Milbank Sales Team also works with specifiers, engineers, project managers, electrical distributors, contractors and local officials.



## QUOTING

The project specifications are received and reviewed by a Milbank Inside Sales Rep (ISR). Enclosed controls are highly configurable resulting in the generation of a quote that meets the project specifications submitted by the customer. The ISR team is made of up three territories: West, Central and East.



## ENGINEERING

Milbank engineers work closely with the sales team to design a pedestal that works for specific applications. Units are available metered or Unmetered, in a variety of sizes and materials. Some available components are battery backups, clocks and timers, receptacles, surge protection, contactors, transformers, push-button controls, generator inlets, switched loads and motor starters.

## PRODUCTION

Work orders are sent to the production floor from our scheduling team. Once there, the raw material is cut to size and necessary features are punched in. A press brake will be used to form the critical dimensions and then the product will be sent to welding. Products ordered with a powder-coat finish will then move to our wash system to be thoroughly cleaned and prepped for powder coating. Once the parts have the finish needed, they move to the assembly area to be populated with internal components and fully assembled. Products are then tested and packaged for shipping.



## QUALITY CHECK

All Milbank enclosed control products are designed and manufactured to meet UL Standard 508A and NEMA requirements, as quality and safety are always our first priority. Each member of the Milbank team is responsible for meeting quality and UL standards throughout the manufacturing process. All components that make up each EC assembly are inspected and verified. Prior to shipping, an End-of-Line (EoL) test is performed on the control circuit of each assembly to verify the safety of the assembly and its operation.



## LOGISTICS

The product is received and placed into the finished goods inventory location. A transaction occurs to put the product on stock. A sales order is allocated and placed on the floor for a warehouse associate to pull and prepare for shipment. The order is processed in the office and a packing slip placed on the product. A Bill of Lading (BOL) for the shipment is placed on a clipboard for the driver to sign when it is being loaded and picked up.



# Milbank in Action





## Notes

This image shows a single sheet of white paper with horizontal ruling lines. The lines are evenly spaced and run across the width of the page. There are no margins, text, or other markings on the paper.



# Milbank Enclosed Controls

## Request for Quote

Please answer all of the questions. Additional comments as to application and future requirements will help Milbank determine the best product for your job.

Contact Name: \_\_\_\_\_ Contact Phone: \_\_\_\_\_

Milbank Rep: \_\_\_\_\_ Sales Person: \_\_\_\_\_

Job Name & Location: \_\_\_\_\_

Application: \_\_\_\_\_

Utility: \_\_\_\_\_

Unit Amperage: \_\_\_\_\_ Voltage: \_\_\_\_\_ Phase: \_\_\_\_\_ Wire: \_\_\_\_\_ SCCR: \_\_\_\_\_  
(Short Circuit Current Rating)

Meter Socket Type: ☐ Ringless ☐ Ring Type Required # of Meters: \_\_\_\_\_

Number of Terminals: \_\_\_\_\_ Fifth Terminal at \_\_\_\_\_ o'clock position

Main Breaker #1: Amps: \_\_\_\_\_ Poles: \_\_\_\_\_ KAIC: \_\_\_\_\_

Main Breaker #2: Amps: \_\_\_\_\_ Poles: \_\_\_\_\_ KAIC: \_\_\_\_\_

Interior #1: 0-42 Circuits: \_\_\_\_\_ Load Center: \_\_\_\_\_ Panel Board: \_\_\_\_\_

Interior #2: 0-42 Circuits: \_\_\_\_\_ Load Center: \_\_\_\_\_ Panel Board: \_\_\_\_\_

### Branch Breakers

Qty	Amps	Poles	KAIC	Label/Special
Breakers: _____	_____	_____	_____	_____
Breakers: _____	_____	_____	_____	_____
Breakers: _____	_____	_____	_____	_____
Breakers: _____	_____	_____	_____	_____
Breakers: _____	_____	_____	_____	_____

### Controls

Quantity: \_\_\_\_\_ Time Clock Functionality: \_\_\_\_\_ Channel Quantity: \_\_\_\_\_  
(Astro, 24 Hour, 7 Day, Etc.) (1, 2, 4, Etc.)

Quantity: \_\_\_\_\_ Photo Electric Control Receptacle

Quantity: \_\_\_\_\_ HOA or Test Switch \_\_\_\_\_





# Milbank Enclosed Controls

Request for Quote

Please answer all of the questions. Additional comments as to application and future requirements will help Milbank determine the best product for your job.

**Contactors**

Type:      Electronically Held (EH)    - or -    Mechanically Held (MH)

Type: \_\_\_\_\_ Quantity: \_\_\_\_\_ Amps: \_\_\_\_\_ Poles: \_\_\_\_\_ Coil Voltage: \_\_\_\_\_

Type: \_\_\_\_\_ Quantity: \_\_\_\_\_ Amps: \_\_\_\_\_ Poles: \_\_\_\_\_ Coil Voltage: \_\_\_\_\_

Type: \_\_\_\_\_ Quantity: \_\_\_\_\_ Amps: \_\_\_\_\_ Poles: \_\_\_\_\_ Coil Voltage: \_\_\_\_\_

Cabinet/Finish Requirements: *(Circle One)*

Aluminum - Unpainted    Aluminum Anodized Coating    Stainless Steel    Aluminum - Painted    Galvanized Steel Painted (STD)

Specify Paint Option: \_\_\_\_\_

*Paint Options*

Mint Green    Pine Green    Moss Green    Black    Desert Tan    White    Gray    Summerland Gray    Other RAL

Step Down Tranformer:    Primary Voltage: \_\_\_\_\_    Secondary Voltage: \_\_\_\_\_    KVA: \_\_\_\_\_

Surge Protection:    Quantity: \_\_\_\_\_    KA Rating \_\_\_\_\_    Type (1, 2): \_\_\_\_\_

Additional Comments and Requirements:

\_\_\_\_\_

\_\_\_\_\_

\_\_\_\_\_

\_\_\_\_\_

\_\_\_\_\_

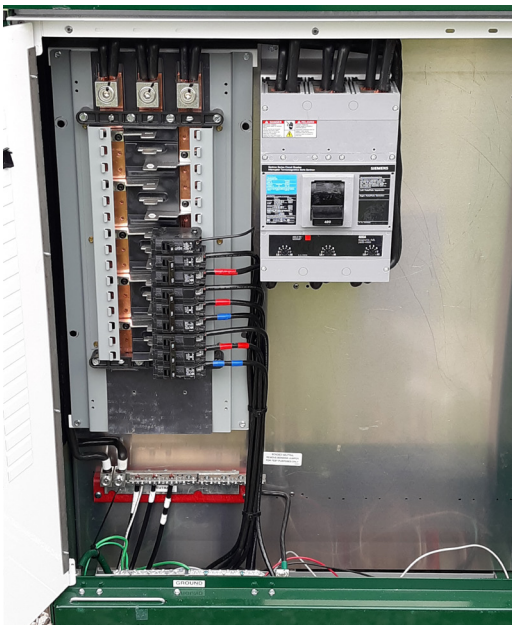


Scan this QR code to find this form and more information about Enclosed Controls products on the Enclosed Controls [web page](#).

Please send any drawings, plans, specifications and load/panel board schedules with worksheet.

# Case Studies

## Application Examples



**Location:** Sandusky, OH

**Description:** Customer had a dilapidated, unsafe wood backboard system with meter sockets, CT rated meter socket and several disconnects.

Milbank installed a secure pedestal with breakers inside. The system powers the lights and supports power to the concession stand and scoreboard.

Due to original service being overhead, the customer decided to keep the overhead service with a cost-effective termination box to feed the enclosed controls cabinet, rather than replacing the entire system. The results are safe, secure and aesthetically pleasing.





**Location:** Gladstone, MO

**Description:** This Milbank pedestal supplies power for the Chase Bank ATM parking lot kiosk.



**Location:** North Carolina

**Description:** 12-inch exposed meter pedestal used for traffic applications.



**Location:** Atlanta, GA

**Description:** Intersection near the Atlanta Braves stadium in Atlanta, GA uses 16-inch exposed meter pedestal to manage the intersection traffic control.





# Case Studies

## Application Examples



**Location:** Mission Viejo, CA

**Description:** The Milbank pedestal is supplying power for the irrigation and pump control to its left. Also includes walkway lighting control equipment. Anodized aluminum.



**Location:** Costa Mesa, CA

**Description:** Milbank commercial pedestal supplying power for an underground telephone equipment vault. Meter socket, generator receptacle and surge protection are all installed inside this pedestal.





**Location:** Lacy, WA

**Description:** A traffic signal control cabinet stands next to a Milbank power supply and street lighting control pedestal. Mounted on a raised pad for winter snow conditions. Anodized aluminum.



**Location:** Cleveland, OH

**Description:** Milbank pedestals were supplied for Greater Cleveland Rapid Transit Bus Stops to provide security and normal lighting. Pedestals looped together for efficiency.



# Case Studies

## *Application Examples*



**Location:** Interstate 70, MO

**Description:** Milbank pedestal providing remote distribution for dynamic message signs along I-70 between Kansas City and St. Louis, MO. Operated through MoDOT, these stationary traffic control devices provide travelers with real-time traffic-related messages.





**Location:** Manchester, TN

**Description:** Milbank pedestals used for annual outdoor music and arts festival. Operating in remote farmland, multiple pedestals provide temporary power receptacles for organizer's use. Shown with in-use cover, which allows for security and safety for receptacles in use.



# Case Studies

## *Application Examples*



**Location:** Rio Rancho, NM

**Description:** This battery backup pedestal contains an inverter and batteries. In the event that utility power fails, traffic signals at this busy intersection will still have uninterrupted power. The Milbank pedestal supplies power for the intersection signal heads and the control cabinet using utility power or, if necessary, a backup system. The batteries can run the entire intersection traffic lights for four hours in full operation mode and an additional four hours in flashing mode. Aluminum powder painted tan.





**Location:** Atlanta, GA

**Description:** Located outside the Atlanta Falcons arena stands a Milbank exposed meter lighting pedestal.



**Location:** Dubuque, IA

**Description:** Parking lot lighting power and control application. Steel painted black.



**Location:** St. Louis, MO

**Description:** Enclosed controls provide power distribution for traffic lights throughout the city of St. Louis. The unit shown was designed to meet specific guidelines set by MoDOT, and these serve as the standard unit for traffic controller cabinets.



# Case Studies

## Application Examples



**Location:** Kansas City, MO

**Description:** Multiple pedestal locations throughout the Zona Rosa Shopping Center provide street lighting and traffic signal distribution.



**Location:** Anaheim, CA

**Description:** Disneyland parking lot lighting and control. Two pedestals were provided as customer required both 120V and 480V. Steel painted green.





**Location:** *Kansas City, MO*

**Description:** Multiple pedestal locations at Kansas City International Airport provide lighting distribution for rental car facility parking lot.



**Location:** *Anaheim, CA*

**Description:** Milbank pedestal supplying power for the traffic signal cabinet (seen in picture). Pedestal also holds the control equipment for the intersection and roadway street lighting. Anodized aluminum.

# Enclosed Controls Catalog Logic



## 3 & 4. Product Family

*Position 3 and 4*

**CP2B** - Surface-mount  
**CP3A** - Slimline  
**CP3B** - Standard  
**CP3C** - FlexPed  
**CP3D** - Data Cabinet Plus  
**CP3F** - CT-Rated below 800 Amps  
**CP3G** - Battery backup

## 5. Enclosure Details

*Position 5 - Dimensions - Description*

### CP2B\* SURFACE-MOUNT SERIES

**N** - 20"W x 8.25"D x 50"H  
Top/bottom entry/exit  
**O** - 34.5"W x 7.4"D x 47.15"H  
Side-by-side

### CP3A\* SLIMLINE SERIES

**A** - 12"W x 8.25"D x 63"H  
Single-socket, covered  
**B** - 20"W x 8.25"D x 63"H  
Single-socket, covered  
**C** - 20"W x 10.25"D x 52"H  
Single-socket, covered  
**I** - 2"W x 8.25"D x 50"H  
Single-socket, covered  
**J** - 20"W x 8.25"D x 50"H  
Single-socket, covered  
**K** - 12"W x 8.25"D x 63"H  
Single-socket, exposed  
**L** - 20"W x 8.25"D x 63"H  
Single-socket, exposed  
**M** - 12"W x 8.25"D x 50"H  
Single-socket, exposed  
**N** - 20"W x 8.25"D x 50"H  
Single-socket, exposed

**O** - 12"W x 8.25"D x 43"H - Unmetered  
**P** - 20"W x 8.25"D x 43"H - Unmetered

### CP3B\* STANDARD

**A** - 16"W x 17"D x 48"H  
Single-socket, covered  
**B** - 24"W x 17"D x 48"H  
Single or double socket covered  
**K** - 32"W x 20"D x 60"H  
Single or double socket covered  
**P** - 16"W x 17"D x 48"H  
Single-socket, exposed  
**R** - 24"W x 17"D x 48"H  
Single or double socket exposed  
**S** - 32"W x 20"D x 60"H  
Single or double socket exposed

**E** - 16"W x 17"D x 41"H  
Unmetered, low-profile  
**M** - 24"W x 17"D x 41"H  
Unmetered, low-profile  
**Q** - 32"W x 20"D x 43.5"  
Unmetered

### CP3C\* FLEX-PED SERIES

**A** - 26"W x 14"D x 62.12"H  
1 SC-meter in side wireway no rear doors  
**B** - 33"W x 14"D x 62.12"H  
1 SC-meter in side wireway no rear doors  
**C** - 40"W x 14"D x 62.12"H  
1 SC-meter in side wireway no rear doors  
**D** - 20"W x 14"D x 62.12"H - Unmetered  
**E** - 27"W x 14"D x 62.12"H - Unmetered  
**F** - 34"W x 14"D x 62.12"H - Unmetered  
**H** - 58"W x 39"D x 67.5"H  
1 or 2 SC-meters up to 150kva internal xfmr  
**J** - 46"W x 39"D x 67.5"H  
Unmetered up to 150kva internal xfmr

### CP3D\* DATA CABINET PLUS

**A** - 44"W x 24"D x 60"H  
Hooded meter 2 door (60"T)  
**B** - 44"W x 24"D x 60"H  
Exposed meter 2 door (60"T)  
**C** - 44"W x 24"D x 60"H  
Unmetered 2 door (60"T)  
**D** - 44"W x 24"D x 60"H  
Hooded meter 3 door (60"T)  
**E** - 44"W x 24"D x 60"H  
Exposed Meter 3 Door (60"T)  
**F** - 44"W x 24"D x 60"H  
Unmetered 3 door  
**L** - 44"W x 24"D x 60"H  
Unmetered 4 door (60"T)  
**N** - 44"W x 24"D x Varied  
Non-standard

### CP3F\* CT RATED 800A AND BELOW

**A** - 46"W x 27"D x 64"H  
Exposed embedded socket  
**B** - 46"W x 39"D x 64"H  
Exposed embedded socket  
**C** - 64"W x 39"D x 64"H  
Exposed embedded socket  
**F** - 56"W x 27"D x 64"H  
Covered embedded socket  
**G** - 56"W x 39"D x 64"H  
Covered embedded socket  
**H** - 74"W x 39"D x 64"H  
Covered embedded socket

**L** - 46"W x 27"D x 64"H  
Unmetered or surface-mounted socket  
**M** - 46"W x 39"D x 64"H  
Unmetered or surface-mounted socket  
**N** - 64"W x 39"D x 64"H  
Unmetered or surface-mounted socket

### CP3G\* BATTERY BACKUP

**A** - 36"W x 20"D x 60"H  
1 or 2 sockets (side batteries)  
**B** - 36"W x 20"D x 60"H  
1 or 2 sockets (front facing equipment)  
**F** - 30"W x 24"D x 48"H  
1 socket - front to back design  
**G** - 30"W x 24"D x 54"H  
1 socket - front to back design sloped top

## 6. Meter Socket

*Position 6*

**0** - No meter socket  
**1** - 1 ring type socket (with test bypass)  
**2** - 2 ring type sockets (with test bypass)  
**3** - 2 ring type sockets (without bypass)  
**4** - 1 ring type socket (without bypass)  
**5** - 1 ringless socket (with lever bypass)  
**6** - 2 ringless sockets (with lever bypass)  
**7** - 1 ringless socket (without bypass)  
**8** - 1 bolt-on meter (K-Base)  
**9** - 1 ringless socket (-KK horn bypass)  
**A** - 2 ringless sockets (-KK horn bypass)  
**B** - 1 ring type socket (w/ test switches)  
**C** - 1 ringless type socket (w/ test switches)

## 7. Meter Socket Config.

*Position 7 - Socket Configuration | Meter Forms  
| Self-contained (SC) or Transformer-Rated (TR)*

**0** - No meter socket  
**1** - 4 jaw | 1s,2s | SC  
**2** - 4 jaw (neutral center) | 1s,2s | SC  
**3** - 5 jaw (5th in 6 o'clock) | 3s | SC  
**4** - 5 jaw (5th in 9 o'clock) | 3s | SC  
**5** - 7 jaw | 14s, 15s, 16s, 17s, 24s | SC  
**6** - 8 jaw | 5s, 35s, 45s | SC

**A** - 6 jaw | 4s | TR  
**B** - 8 jaw | 5s, 35s, 45s | TR  
**C** - 13 jaw | 6s, 8s, 9s, 10s, 29s, 36s, 46s | TR  
**D** - 15 jaw | 11s, 39s, 76s | TR

## 8. Volt (L:L/L:N)

*Position 8 - Volt (L:L/L:N) | Phase | Wires*

**1** - 120V (L:N) | 1Ø | 2W  
**2** - 240/120V | 1Ø | 3W





- 3 - 208/120 No network | 1Ø | 3W
- 4 - 208/120V wye | 3Ø | 4W
- 5 - 480/277V wye | 3Ø | 4W
- 6 - 600/347V wye | 3Ø | 4W

- A - 208/120V Δ (no neutral) | 3Ø | 3W
- B - 240/208/120V Δ | 3Ø | 4W
- C - 480/277V Δ (no neutral) | 3Ø | 3W
- D - 480/415/240V Δ | 3Ø | 4W

## 9. Amperage

*Position 9*

- 0 - No Rating
- 1 - 100A
- 2 - 200A
- 3 - 125A
- 4 - 400A
- 6 - 600A
- 8 - 800A

## 10. Main

*Position 10*

- 1 - (1) circuit breaker main
  - 2 - (2) circuit breaker main
  - 3 - (3) circuit breaker main
  - 4 - (4) circuit breaker main
  - 5 - (5) circuit breaker main
  - 6 - (6) circuit breaker main
- 
- A - (1) fused main disconnect
  - B - (2) fused main disconnect
  - C - (3) fused main disconnect
  - D - (4) fused main disconnect
  - E - (5) fused main disconnect
  - F - (6) fused main disconnect
  - K - Interlocked main

## 11-12. SCCR

*Position 11 and 12*

- 10 - 10k
- 14 - 14k
- 22 - 22k
- 25 - 25k
- 30 - 30k
- 35 - 35k
- 42 - 42k
- 50 - 50k
- 65 - 65k
- 01 - 100k
- 02 - 200k

## 13. Material

- G - Steel G90 14 GA
- H - Steel G90 12 GA
- A - Aluminum
- S - Stainless 304
- T - Stainless 316

## 14. Color

*Position 14*

- G - Mint green
- P - Gray (Ansi 61)
- D - Moss green (RAL 6005)
- F - Pine green (RAL 6020)
- T - Tan (RAL 1015)
- R - Desert tan (RAL 9001)
- B - Black (RAL 9004)
- W - White
- H - Anodized coating clear
- I - Anodized coating black
- J - Anodized coating bronze
- K - Anodized coating champagne
- O - No paint (Alum and Stainless)
- C - Custom (see product details)

## 15-25. Special Features\*

*Position 15 - 25 - Options as Needed*

- CS - Cold sequence
- CL - Copper neutral
- SL - Switched-load
- PB - Pentabolt

## 15-25. DOT Suffixes\*

*Position 15 - 25 - 2 Letter State Abrev + D - Options as Needed*

- MOD - Missouri
- ILD - Illinois
- COD - Colorado

## 15-25. Utility Suffixes\*

*Position 15 - 25 - Options as Needed*

- Utility Abbreviation - XXX
- Municipality Abbreviation - XXX
- Other Abbreviation As Needed - XXX

## 15-25. Differentiator\*

*Position 15 - 25 - Options as Needed\**

Catalog logic differentiator - Numeric  
(used when duplicate part # logic occurs)  
Example 123 or 07



**This catalog structure is effective as of 6/1/2023.**

**For info regarding legacy catalog logic, please scan the QR code here.**

*\* Options as needed, not a requirement.*

Standard options listed, please contact inside sales for additional options, questions or more information regarding Enclosed Controls.

## NOTES



**MILBANK<sup>®</sup>**  
ENERGY AT WORK

Milbank Manufacturing | 4801 Deramus Ave., Kansas City, MO 64120 | 877.483.5314  
milbankworks.com | @milbankworks