

Meter Mounting Equipment

North & South Carolina Area
Including: Duke Power, SCE&G, and
Progress Energy approved units



MILBANK[®]





Charles A. Milbank
1879-1966



Bill Martin
1916-1998



Robert F. Waldrop
1922-2002



Robert F. Waldrop, II
Chairman



Katrina Waldrop Henke
Vice Chairman

Milbank–Quality Metering Products for 80 Years

Milbank Manufacturing Company was established in 1927 by Charles A. Milbank. Originally, the company manufactured high voltage switches; however, by 1941 Milbank devoted itself primarily to the manufacture of sheet metal enclosures and related equipment for the electrical generation and distribution industry. Today we are an industry leader in the manufacture of electrical meter sockets. Through a national network of manufacturer’s representatives we provide wholesale electrical distributors with quality electrical products for the utility, contractor, industrial and OEM markets.

As the meter standards have changed, Milbank has been successful in adapting its product line to these changes. Our full scale engineering department designs products to meet customer specifications and satisfy all utility requirements. Milbank’s employee base of over 1,000 workers, along with our

five manufacturing facilities comprising almost 550,000 square feet give us the flexibility to schedule, produce, and ship orders quickly. Currently, Milbank manufactures over 10,000 different catalog items, and this list continues to grow. Our unique product offering includes: Residential & Commercial Meter Sockets; Residential & Commercial Meter Pedestals; RV/MH Power Outlets, Service Pedestals, and Transformers; Commercial & Industrial Electrical Enclosures; Circuit Breakers; Disconnects & Safety Switches; Safety Sockets; Utility & Residential Secondary Pedestals; Hubs, and related accessories. If you don’t find a unit in this catalog to service your needs, send us your specifications and we will be happy to work with you.

Our success has come from a loyal customer base that can rely on us to build quality products at a fair price in a timely manner. Our willingness and ability to design and produce new products

to meet our customer demands is an important factor to remain competitive in today’s electrical market.

Milbank has been serving the electric utility & wholesale distribution industries for 80 years with innovative, quality engineered products. So remember us for all of your meter mounting and related requirements, and we will be happy to serve you as we have in the past—with dependable service and quality products!

We take great pride in being one of the few family-owned businesses left in our industry. We are a third generation run business and truly believe that...

FAMILY MAKES A DIFFERENCE!



CATALOG NUMBER LOGIC	4
DISCONNECTS (30-200 AMP)	
30 & 60 AMP FUSIBLE/NON-FUSIBLE AC DISCONNECTS	5
AC DISCONNECT WITH GFCI PROTECTION/SPA BOX	6
SINGLE POSITION	
125/200 AMP-4 & 5 TERMINAL-RINGLESS-600 VAC	7
200 AMP-4 TERMINAL-RINGLESS-600 VAC	8
320 AMP-4 TERMINAL-HEAVY DUTY LEVER BYPASS-RINGLESS-600 VAC	9
200 AMP-5 & 7 TERMINAL-RINGLESS-600 VAC	10
320 AMP-4 TERMINAL-JAW CLAMPING LEVER BYPASS-RINGLESS-600 VAC	11
320 AMP-7 TERMINAL-JAW CLAMPING LEVER BYPASS-SIDE WIREWAY-RINGLESS-600 VAC	12
320 AMP-4 TERMINAL-JAW CLAMPING LEVER BYPASS-RINGLESS-600VAC	13
480 AMP-4 TERMINAL-RINGLESS-300VAC	14
480 AMP-7 TERMINAL-RINGLESS-600VAC	15
LUG CONNECTORS	16
MULTIPLE POSITION	
200 AMP-4 TERMINAL-HORIZONTAL GANGS-RINGLESS-300VAC	17
CONDOMINIUM METERING BANKS-RINGLESS	18
CONDOMINIUM METERING BANKS-DIMENSIONAL INFORMATION	19
METER MAINS	
100, 150 & 200 AMP-4 TERMINAL-METER MAIN-RINGLESS	20
200 AMP-4 TERMINAL-METER SOCKET/CB COMBO-RINGLESS	21
CT RATED	
20 AMP-5, 6, 8 & 13 TERMINAL-TRANSFORMER RATED-RINGLESS/RING TYPE-600 VAC	22
TEST SWITCHES-4, 7, & 10 POLE-600 VAC	23
ENCLOSURES	
DUKE POWER APPROVED JUNCTION BOX/PULL BOX-T-TYPE ENCLOSURE	24
COMMERCIAL PEDESTALS	
COMMERCIAL METER PEDESTALS OVERVIEW	25
POWER OUTLETS	
SERIES U5000-UNMETERED-SURFACE MOUNT POWER OUTLET	26
SERIES U5100-METERED-SURFACE MOUNT POWER OUTLET	28
SERIES U5200-UNMETERED-PEDESTAL MOUNT POWER OUTLET	30
SERIES U5300-METERED-PEDESTAL POWER OUTLET	32
U4908/U4909 UNDERGROUND SERVICE POWER OUTLET-RINGLESS/RING TYPE	34
U5136/U5137 RINGLESS METERED PEDESTALS-200 AMP	36
RV ACCESSORIES	
TELEPHONE, CABLE TV KIT, WATER SHROUD, SINGLE RECEPTACLE ONLY POWER OUTLET	38
MISCELLANEOUS	
ACCESSORIES	39
CONDUIT & AMPACITY INFORMATION	41
ENERGIZATION OF ELECTRICAL EQUIPMENT	42
MATERIALS AND FINISHES	43
METER FORMS	44
SKU/PAGE NUMBER INDEX	45
ADDITIONAL MILBANK PRODUCTS	46

Catalog Number Logic

U = UL Listed
S = Non-UL Listed
UAP = UL / Alum / Painted

TG = Triplex Ground
QG = Quadplex Ground

KK = Horn By-Pass Provision

Specific Utility Designation

Milbank Drawing Number

Barrel Lock

U7040-RL-TG-KK-5T9-BL-AUT

HUB OPENINGS / CLOSING PLATES

O	Plain Top	WL	1"	For -RL Opening
RL	Small Hub Opening	YL	1¼"	For -RL Opening
R	Large Hub Opening	ZL	1½"	For -RL Opening
XL	Small Closing Plate	DL	2"	For -RL Opening
X	Large Closing Plate	EL	2½"	For -RL Opening
RXL	Large Hub Opening adapted to small Closing Plate.	F	3"	For -R Opening
		G	3½"	For -R Opening
RRL	Large Hub Opening adapted to small Hub Opening	H	4"	For -R Opening

Fifth Terminal Designation

- **5T6 installed at 6:00**
- **5T9 installed at 9:00**

Barrel Lock / Guard Provision

U2448-X-QG-5T9-K3-BLG-ARE

Milbank Drawing Number

TG = Triplex Ground
QG = Quadplex Ground

Specific Utility Designation

Lugs [1Ø or 3Ø – 350 or 600 kcmil]

- **Single [K1, K3, K5, K7]**
- **Twin [K2, K4, K6, K8]**



U3800
(No deadfront required)



U3801



U3860

PROFILE

Milbank's air conditioner disconnect has a removable hinged cover which makes wiring a breeze. Our compact design meets all wire bending space requirements in the NEC and, also, complies with article 440-14 in the NEC. To insure the safest conditions, we designed our disconnect pullers to be removable or they may be reinstalled in the off position. Another safety feature is the padlock provision on the front cover. As with all Milbank products, our enclosure is constructed of G90U galvanized steel and finished with an attractive, light gray, baked powder coating. Our state of the art finish combines epoxy and polyester hybrid resins into a hybrid powder coating which is then electrostatically applied. This offers a durable, nonfading finish.

TECHNICAL INFORMATION

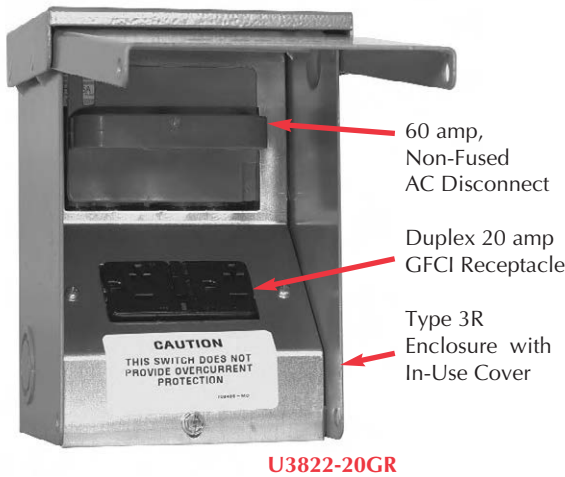
AMP	TYPE	CATALOG NUMBER	MAX H.P.	WT. @ #	LINE & LOAD WIRE RANGE		GROUND WIRE RANGE	DIMENSIONS			WIRE RATING	
					CU	AL	CU/AL	D"	W"	H"	CU °C	AL °C
30	FUSIBLE	U3830	3	2.7	#14-#3 AWG	#14-#3 AWG	#14-3 AWG	2-5/8	5	7	60°/75°	60°/75°
60	FUSIBLE	U3860	10	3.3	#14-#3 AWG	#14-#3 AWG	#14-3 AWG	3	5	9¼	60°/75°	60°/75°
60	NONFUSIBLE	U3800	10	3.25	#14-#2 AWG	#12-#2 AWG	#14-3 AWG	3	5	8	60°/75°	60°/75°
60	NONFUSIBLE	U3801	10	2.5	#14-#3 AWG	#14-#3 AWG	#14-3 AWG	2-3/8	5	6-3/4	60°/75°	60°/75°

- ✓ U/L listed as Enclosed Pullout Switch
- ✓ 1Ø, 240 VAC

- ✓ Type 3R Rainproof
- ✓ Six one-inch concentric knockouts

Combination AC Disconnect / 20 Amp GFCI Receptacle—Together in 1 Box

AC DISCONNECT / SPA BOX



- Meets NEC # 210.63 Requirements *
- UL Listed as Power Outlet
- Type 3R Enclosure
- In-Use Cover**
- Duplex Ground Connector
- 1" Concentric Knockouts

AC DISCONNECT

- 1Ø, 240 Volt
- 60 amp, Non-Fused

GFCI RECEPTACLE

- 20 amp
- Reset/Test Button
- Padlock provision

* NEC® #210.63 Heating, Air-Conditioning and Refrigeration Equipment Outlet. ...The receptacle shall be located on the same level and within 7.5 m (25 ft.) of the heating, air-conditioning and refrigeration equipment.

* NEC® #210.08 Ground-Fault Circuit- Interruptor protection for personnel.

U3822-20GR

AMP	TYPE	CATALOG NUMBER	MAX H.P.	WT. #	LINE & LOAD CONNECTOR WIRE RANGE		GROUND CONNECTOR WIRE RANGE	DIMENSIONS			WIRE RATING	
					CU	AL	CU/AL	D"	W"	H"	CU °C	AL °C
60	NONFUSIBLE	U3822-20GR	10	6	#14-#2 AWG	#12-#2 AWG	#14-4 AWG	4.8	5.25	7.4	60°/75°	60°/75°

To ensure the safest conditions, Milbank disconnect pullers are designed to be reversible so they may be reinstalled in the OFF position. All units are designed with a padlock provision on the cover for security.

****Note:** U3822-20GR cover rated as *IN-USE COVER* (Cover may be closed with cords plugged into receptacle).

*Reprinted with permission from NFPA 70-2002, *National Electrical Code*®, Copyright 2001, National Fire Protection Association, Quincy, MA 02269. This reprinted material is not the complete and official position of the NFPA on the referenced subject, which is represented only by the standard in its entirety. National Electrical Code® and NEC® are registered trademarks of the National Fire Protection Association, Quincy, MA.

Hot Tub Disconnect or Sub Panel Breaker Enclosure—Type 3R

Spa Box with GFCI Protection



U4881-O-50GB

- 240 volt ground fault protection
- UL listed, Type 3R rainproof
- Milbank reliability
- Easy installation
- 2 pole, 50 or 60 amp GFCI breaker protection
- Compact size:
8-1/2" H x 7-1/2" W x 3-3/4" D
- 3 or 4 wire installation
- 1Ø, 120 / 240 VAC
- Standard package of 12
- 2 extra one-pole breaker spaces
- 100 amp overall rating

Sub Panel Breaker Enclosure

- Use as a 100 amp, 4 circuit sub panel enclosure
- U4881-O has provision for (2) 2-pole or (4) 1-pole small frame breakers

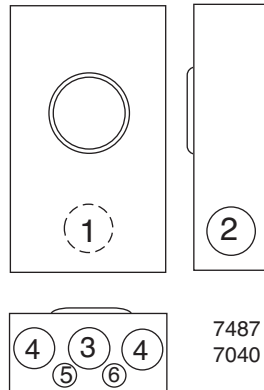


AMP	TYPE	CATALOG NUMBER	WT. #	LINE & LOAD CONNECTOR WIRE RANGE		GROUND CONNECTOR WIRE RANGE	DIMENSIONS		
				CU	AL	CU/AL	D"	W"	H"
—	BREAKER PROVISION	U4881-O	7	#14-1/0	#14-1/0	#14-1/0	3 3/4	7 1/2	8 1/2
50	BREAKER	U4881-O-50GB	8	#14-1/0	#14-1/0	#14-1/0	3 3/4	7 1/2	8 1/2
60	BREAKER	U4881-O-60GB	8	#14-1/0	#14-1/0	#14-1/0	3 3/4	7 1/2	8 1/2





U7487-RL-QG-CAPL


 7487
7040


U7040-XL-TG

125 AMP-4 & 5 TERMINAL-RINGLESS-OVERHEAD / UNDERGROUND-1Ø3W

NO OF TERM	UTILITY	CATALOG NUMBER	HUB	CONNECTORS CU/AL		BY-PASS	DIMENSIONS			CONCENTRIC K.O.'S					
				LINE	LOAD		D"	W"	H"	1	2	3	4	5	6
4	DUKE, SCE&G PROGRESS EN	U7487-RL-QG-CAPL	H.O.	#6-2/0	#6-2/0	NONE	3 ⁵ / ₁₆	8	11 ¹ / ₂	1 ¹ / ₂	1 ¹ / ₂	2	1 ¹ / ₄	—	1 ¹ / ₄
5	DUKE, SCE&G PROGRESS EN	U7487-RL-TG-5T	H.O.	#6-2/0	#6-2/0	NONE	3 ⁵ / ₁₆	8	11 ¹ / ₂	1 ¹ / ₂	1 ¹ / ₂	2	1 ¹ / ₄	—	1 ¹ / ₄

HUBS: For proper hub selection see the hub suffix chart on the accessory page.

FIFTH TERMINAL: For field mounted fifth terminal order catalog number **5T8K2**.

CONNECTORS: Extruded aluminum connectors are tin plated. Units are supplied with duplex neutral and quadplex ground.

200 AMP-4 & 5 TERMINAL-RINGLESS-OVERHEAD / UNDERGROUND-1Ø3W

NO OF TERM	UTILITY	CATALOG NUMBER	HUB	CONNECTORS CU/AL		BY-PASS	DIMENSIONS			CONCENTRIC K.O.'S					
				LINE	LOAD		D"	W"	H"	1	2	3	4	5	6
4	DUKE, SCE&G	U7040-XL-TG	C.P.	#6-350	#6-350	NONE	4 ¹ / ₈	11	14 ¹ / ₂	2 ¹ / ₂	2 ¹ / ₂	2 ¹ / ₂	2 ¹ / ₂	1 ¹ / ₄ , 1 ¹ / ₂	1 ¹ / ₄
5	DUKE, SCE&G	U7040-XL-TG-5T*	C.P.	#6-350	#6-350	NONE	4 ¹ / ₈	11	14 ¹ / ₂	2 ¹ / ₂	2 ¹ / ₂	2 ¹ / ₂	2 ¹ / ₂	1 ¹ / ₄ , 1 ¹ / ₂	1 ¹ / ₄

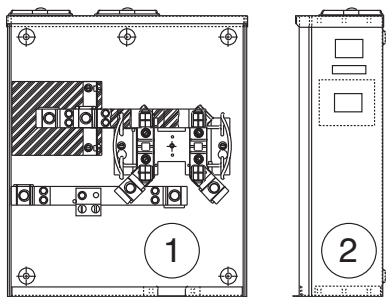
HUBS: For proper hub selection see the hub suffix chart on the accessory page.

***FIFTH TERMINAL:** For field mounted fifth terminal, order catalog number **K5T** for U7040 – must be used with a #10 white wire.

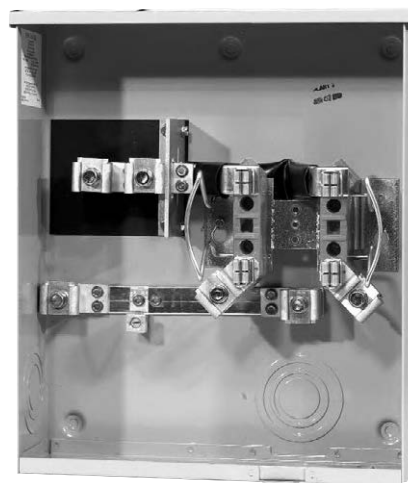
CONNECTORS: Extruded aluminum connectors are tin plated. Units are supplied with duplex neutral and triplex ground.

Utility requirements for this equipment may vary. Always consult the serving utility for their requirements before ordering or installing equipment in this catalog.

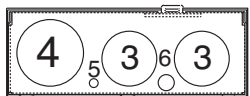
200 AMP-4 TERMINAL-OH / UG-RINGLESS-600 VAC



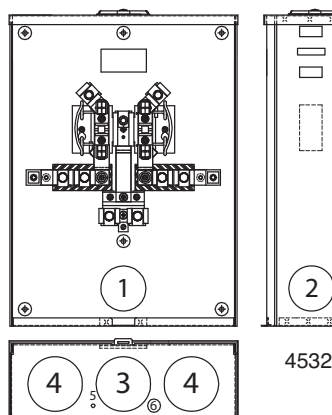
1980



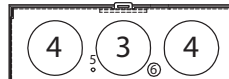
U1980-XTL-QG-CAPL



U4532-XL



4532



200 AMP-4 TERMINAL-SIDE WIREWAY-OVERHEAD / UNDERGROUND-RINGLESS

UTILITY	CATALOG NUMBER	HUB	CONNECTORS CU/AL		BY-PASS	DIMENSIONS			CONCENTRIC K.O.'S					
			LINE	LOAD		D"	W"	H"	1	2	3	4	5	6
PROGRESS	U1980-XTL-QG-CAPL	TWIN C.P.	#6-350	#6-350	NONE	4 1/2	13	15 1/4	2 1/2	2 1/2	2 1/2	3	1/4	1/4, 1/2

FIFTH TERMINAL: For field mounted fifth terminal order catalog number **K5T**.

CONNECTORS: Extruded aluminum connectors are tin plated. Units are supplied with quadplex neutral.

200 AMP-4 TERMINAL-OVERHEAD / UNDERGROUND-RINGLESS

UTILITY	CATALOG NUMBER	HUB	CONNECTORS CU/AL		BY-PASS	DIMENSIONS			CONCENTRIC K.O.'S					
			LINE	LOAD		D"	W"	H"	1	2	3	4	5	6
DUKE	U4532-XL	C.P	#6-350	DUAL #6-350	NONE	4 7/8	15	20 1/2	2 1/2	2 1/2	3	3	1/4	1/4, 1/2

FIFTH TERMINAL: For field mounted fifth terminal order catalog number **K5T**.

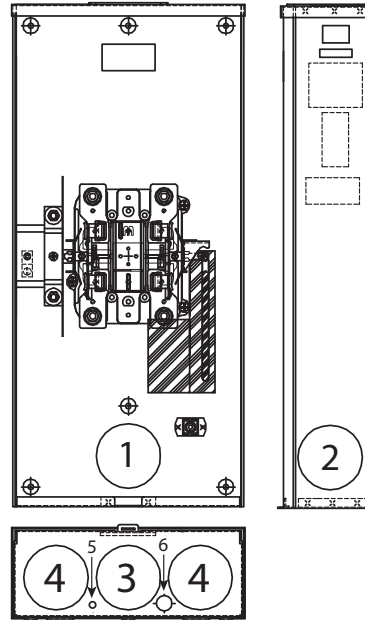
CONNECTORS: Extruded aluminum connectors are tin plated.

Utility requirements for this equipment may vary. Always consult the serving utility for their requirements before ordering or installing equipment in this catalog.





U4363-X-QG-K3-K2
(shown without connectors)



320 AMP-4 TERMINAL-OVERHEAD / UNDERGROUND-RINGLESS-1Ø3W

UTILITY	CATALOG NUMBER	HUB	CONNECTORS CU/AL		BY-PASS	DIMENSIONS			CONCENTRIC K.O.'S					
			LINE	LOAD		D"	W"	H"	1	2	3	4	5	6
DUKE	U4363-X-QG-K3-K2	C.P	#4-600 or (2) 250	TWIN 350	LEVER	4 ⁷ / ₈	13	28 ¹ / ₄	3	3	3	3	1/4	1/4, 1/2

CONNECTORS: Extruded aluminum connectors are tin plated. Supplied with quadplexground.

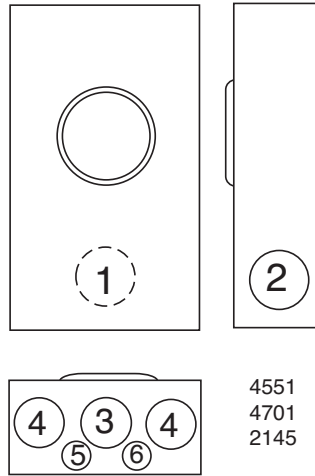
LEVER BYPASS: Lever supplies clamping action on meter spades and also operates bypass device.

FIFTH TERMINAL: For field installed fifth terminal order catalog number **K3865**.

Utility requirements for this equipment may vary. Always consult the serving utility for their requirements before ordering or installing equipment in this catalog.



U4551-RXL-5T9



U4701-RXL

200 AMP—5 TERMINAL—RINGLESS—OVERHEAD / UNDERGROUND—1Ø OR 3Ø3W

UTILITY	CATALOG NUMBER	HUB	CONNECTORS CU/AL		BY-PASS	DIMENSIONS			CONCENTRIC K.O.'S					
			LINE	LOAD		D"	W"	H"	1	2	3	4	5	6
DUKE, SCE&G	U4551-RXL-5T9	C.P.	#6-350	#6-350	LEVER	4 ⁷ / ₈	13	19	3	2 ¹ / ₂	3	3	1/4	1/4, 1/2

200 AMP—7 TERMINAL—RINGLESS—OVERHEAD / UNDERGROUND—3Ø4W

UTILITY	CATALOG NUMBER	HUB	CONNECTORS CU/AL		BY-PASS	DIMENSIONS			CONCENTRIC K.O.'S					
			LINE	LOAD		D"	W"	H"	1	2	3	4	5	6
DUKE, SCE&G	U4701-RXL	C.P.	#6-350	#6-350	LEVER	4 ⁷ / ₈	13	19	3	2 ¹ / ₂	3	3	1/4	1/4, 1/2
PROGRESS EN	U2145-RXL-CAPL	C.P.	#6-350	#6-350	LEVER	4 ⁷ / ₈	13	19	3	2 ¹ / ₂	3	3	1/4	1/4, 1/2

HUBS: For proper hub selection see the hub suffix chart on the accessory page.

BYPASS: Lever supplies clamping action on meter spades and also operates bypass device

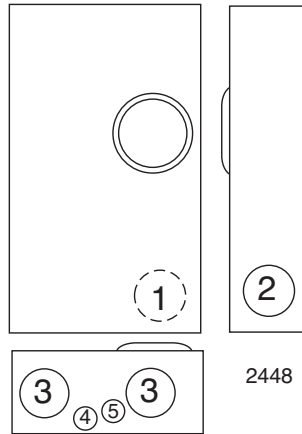
CONNECTORS: Units supplied with extruded aluminum connectors and bonded neutral.

Utility requirements for this equipment may vary. Always consult the serving utility for their requirements before ordering or installing equipment in this catalog.



**320 AMP CONTINUOUS
400 AMP MAX**

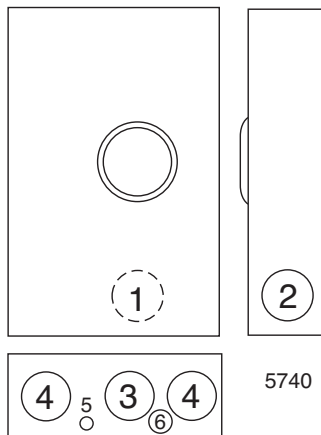

U5740-X-K3L-K2L-CAPL



2448



U2448-X



5740

320 AMP-4 TERMINAL-SIDE WIREWAY-OVERHEAD / UNDERGROUND-RINGLESS-1Ø3W

UTILITY	CATALOG NUMBER	HUB	CONNECTORS CU/AL		FIFTH TERM. KITS	BY- PASS	DIMENSIONS			CONCENTRIC K.O.'S					
			LINE	LOAD			D"	W"	H"	1	2	3	4	5	6
DUKE	U2448-X	C.P.	3/8"-16 STUD	3/8"-16 STUD	K3865	LEVER	6 ¹ / ₂	17 ³ / ₄	34 ¹ / ₈	3	3	4	1/4	1/2, 3/4, 1	—

320 AMP-4 TERMINAL-OVERHEAD / UNDERGROUND-RINGLESS-1Ø3W

UTILITY	CATALOG NUMBER	HUB	CONNECTORS CU/AL		FIFTH TERM. KITS	BY- PASS	DIMENSIONS			CONCENTRIC K.O.'S					
			LINE	LOAD			D"	W"	H"	1	2	3	4	5	6
PROGRESS	U5740-X-K3L-K2L-CAPL	C.P.	#4-600 (2)1/0-250	(2) #6-350	K3865	LEVER	4 ⁷ / ₈	15	31 ¹¹ / ₁₆	3	3	3	3	1/4	1/4, 1/2

HUBS: For proper hub selection see the hub suffix chart on the accessory page.

BYPASS: The lever supplies clamping action on meter spades and also operates bypass device.

CONNECTORS: Stud type units supplied with 3/8"-16 hex head nuts with Belleville washers. For **U2448-X** connector kits, order as extra **K1540** (600 kcmil). For twin lug connectors order as extra **K1350** (350 kcmil). Separate kits are required for both line and load. Connectors for the **U5740-X-K3L-K2L-CAPL** are factory installed.

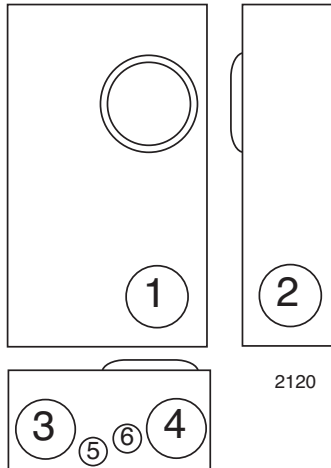
FIFTH TERMINAL: For field installed fifth terminal order kit number **K3865** for the **U2448-X** and **U5740-X-K3L-K2L-CAPL**.

Utility requirements for this equipment may vary. Always consult the serving utility for their requirements before ordering or installing equipment in this catalog.

320 AMP CONTINUOUS-7 TERMINAL-JAW CLAMPING LEVER BYPASS-SIDE WIREWAY-RINGLESS-600 VAC



U2120-X



U2594-X

320 AMP-SIDE WIREWAY-7 TERMINAL-RINGLESS-3Ø4W

UTILITY	AMP	SERVICE	CATALOG NUMBER	HUB	CONNECTORS CU/AL		BY-PASS	DIMENSIONS			CONCENTRIC K.O.'S					
					LINE	LOAD		D"	W"	H"	1	2	3	4	5	6
PROGRESS ENERGY, DUKE	320	UG	U2120-X	C.P.	3/8"-16 STUD	3/8"-16 STUD	LEVER	6 ¹ / ₂	17 ³ / ₄	31 ³ / ₄	4	3	4	4	1/4	1/2, 3/4, 1
	320	OH/UG	U2594-X	C.P.	3/8"-16 STUD	3/8"-16 STUD	LEVER	6 ¹ / ₂	19	34 ¹ / ₈	—	3	4	4	1/4	1/2, 3/4, 1

HUBS: For proper hub selection see the hub suffix chart on the accessory page.

BYPASS: The lever supplies clamping action on meter spades and also operates bypass device.

CONNECTORS: Stud type units supplied with 3/8"-16 hex head nuts with Belleville washers. For single lug connector kits, order as extra **K3441** (600 kcmil). For twin lug connectors order as extra **K3442** (350 kcmil). Separate kits are required for both line and load.

Utility requirements for this equipment may vary. Always consult the serving utility for their requirements before ordering or installing equipment in this catalog.

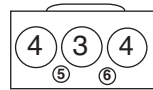
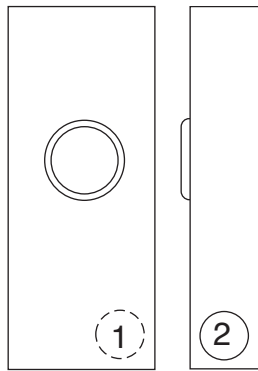




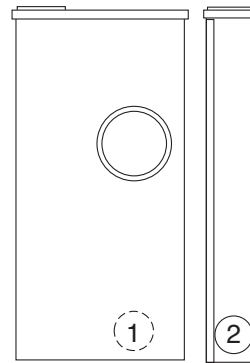
U1129-O-K3L-K2L



U1797-O-K3L-K2L



1129



1797

320 AMP CONTINUOUS-4 TERMINAL-RINGLESS-1Ø3W-600 VAC

SERVICE	CATALOG NUMBER	HUB	CONNECTORS CU/AL		BY-PASS	DIMENSIONS			CONCENTRIC K.O.'S					
			LINE	LOAD		D"	W"	H"	1	2	3	4	5	6
UG	U1797-O-K3L-K2L	BLANK	#4-600 or (2)1/0-250	(TWIN) #6-350	LEVER	4 ⁷ / ₈	15	30	3	3	3	3	1/4	1/4, 1/2
UG	U1129-O-K3L-K2L	BLANK	#4-600 or (2)1/0-250	(TWIN) #6-350	LEVER	4 ⁷ / ₈	15	30	3	3	3	3	1/4	1/4, 1/2

BYPASS: On the U1797 & U1129, the lever supplies clamping action and also operates bypass device.

CONNECTORS: Connectors are factory installed on U1797-O-K3L-K2L & U1129-O-K3L-K2L

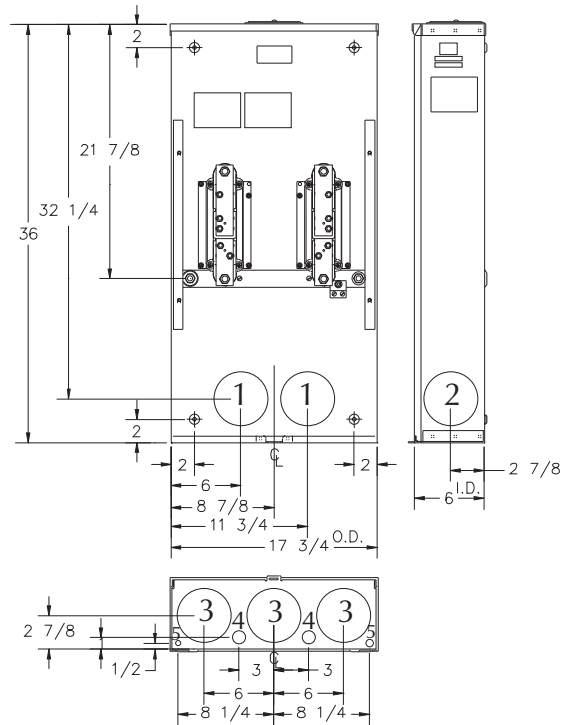
FIFTH TERMINAL: For field installed fifth terminal, order catalog # K3865.

Utility requirements for this equipment may vary. Always consult the serving utility for their requirements before ordering or installing equipment in this catalog.

PROVISION FOR BOLT-IN BYPASS



U4664-X-8507



4 TERMINAL-RINGLESS-1Ø3W-OVERHEAD / UNDERGROUND

UTILITY	SERV.	CATALOG NUMBER	L&G NUMBER	HUB	CONNECTOR CU/AL		DIMENSIONS			CONCENTRIC K.O.'S (INCHES)				
					LINE	LOAD	D"	W"	H"	1	2	3	4	5
SCE&G	OH/UG	U4664-X-8507	9810-8507	(1) Large C.P. (-X)	1/2"-20 STUD	1/2"-20 STUD	6	17 ³ / ₄	36	3,3 ³ / ₄	3,3 ³ / ₄	3,3 ³ / ₄	1 ¹ / ₂ , ³ / ₄	1 ¹ / ₄

APPLICATION: For use with 1Ø3W self-contained type MS-K watt-hour meters.

CAPACITY: 480 amperes continuous / 600 amp max.

TERMINALS: 1/2"-20 steel studs with nuts and captive Belleville washers to accommodate various bolt-on type lugs for conductors from #6 to 800 kcmil. All units come with ground lugs factory installed.

ENCLOSURE: Constructed of 14 gauge galvanized steel suitable for indoor or outdoor installations. Ringless cover. Bar suffix provides Lexan® barrier.

BYPASS: Rated 50%, separate manual type, order Milbank kit #K4687 (Kit includes 2 bypasses.)

METER MOUNTING: Two position stud type. One set of studs provides out-of-service storage. The in-service studs are positioned so the meter cannot be installed upside-down. Full travel meter opening slide plate eliminates the need for repositioning the slide plate for the "IN" or "OUT OF SERVICE" position.

BLOCKS: Glass fiber reinforced polyester plastic. High arc withstand strength and track resistant. Provisions for lightning arresters.

WEIGHT: 58 lbs.—approximate.

CONNECTORS: Phase and neutral connectors not included. For lug connector kit explanation see accessories on page 16.

Utility requirements for this equipment may vary. Always consult the serving utility for their requirements before ordering or installing equipment in this catalog.

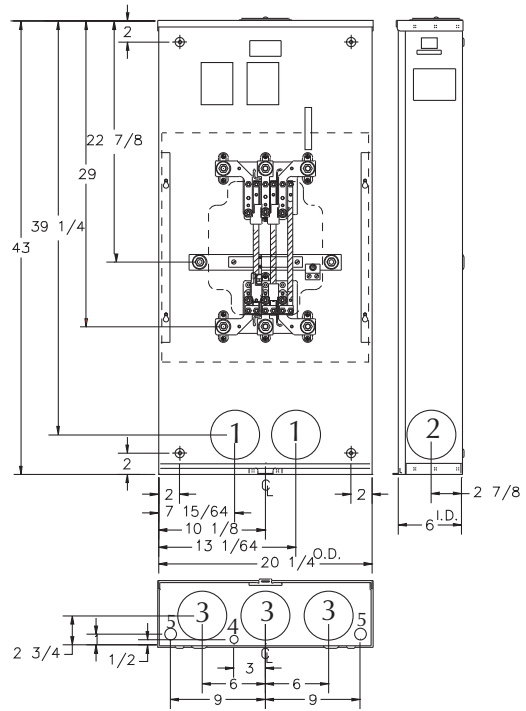


480 AMP CONTINUOUS / 600 AMP MAX-4 TERMINAL-RINGLESS-1Ø3W-300 VAC

PROVISION FOR BOLT-IN BYPASS



U4667-XT-BAR-9572
(Shown without connectors)



U4667-XT-BAR-9572
UA4667-XT-9504

480 AMP CONTINUOUS / 600 AMP MAX-7 TERMINAL-RINGLESS-3Ø4W-600 VAC

7 TERMINAL-RINGLESS-3Ø4W-OVERHEAD / UNDERGROUND

UTILITY	CATALOG NUMBER	PHASE	HUB	CONNECTORS LINE/LOAD	GROUND LUG	DIMENSIONS			CONCENTRIC K.O.'S				
						D"	W"	H"	1	2	3	4	5
PROGRESS ENERGY	U4667-XT-BAR-9572	3	C.P.(2)	704693 / 704694	#12 - 1/0	6	20¼	43	4	4	4	¼	½,¾
SCE&G	UA4667-XT-9504	3	C.P.(2)	1/2"-20 STUD	#12 - 1/0	6	20¼	43	4	4	4	¼	½,¾

APPLICATION: For use with self-contained Type MT-K watt-hour meters on 3Ø4W wye or 4-wire delta services.

CAPACITY: 480 amperes continuous / 600 amperes maximum.

TERMINALS: 1/2"-20 plated steel studs with nuts and captive Belleville washers to accommodate various bolt-on type lugs for conductors from #6 to 800 kcmil CU or AL. Use 3/4" insulated wrench to fasten connectors to block.

ENCLOSURE: Constructed of 14 gauge galvanized steel suitable for indoor or outdoor installations. Ringless cover.

UA4667-XT-9504 has aluminum enclosure. Consult factory. (-BAR) suffix provides Lexan® barrier.

BYPASS: Rated 50%, separate manual type, order Milbank kit #K4688 (Kit includes 3 bypasses.)

METER MOUNTING: The meter is mounted on 6 studs using 5/16"-24 studs with nuts with captive Belleville washers. The upper studs are positioned so that the meter cannot be installed upside down. Use 1/2" insulated wrench. Another set of studs provides on site out-of-service storage. Full travel meter opening slide plate eliminates the need for re-positioning the slide plate for the "IN" or "OUT OF SERVICE" position.

WEIGHT: 71 lbs.— approximate.

CONNECTORS: Phase and neutral connectors included on **U4667-XT-BAR-9572**. Socket with 1/2"-20 studs require (8) connectors for line & load. For Lug connector kit explanation refer to chart on page 16.

Utility requirements for this equipment may vary. Always consult the serving utility for their requirements before ordering or installing equipment in this catalog.



**SCE&G APPROVED K4 & K7 METER SOCKET CONNECTORS
(FOR USE WITH 201-600A 1Ø & 201-600A 3Ø SERVICE)**

Milbank Catalog Number

U4664-X-8507

400 amp-4 Terminal-1Ø3W-OH / UG-K4
(for use on 201-600A 120 / 240V 1Ø service)

Lug Requirements:

Option 1: Overhead

- Line Side (2) **Z705545-AC** – Single 3/0-800 kcmil side entry
- Load Side (2) **Z708124-AC** – Single 3/0-800 kcmil bottom entry
- Neutral (2) **Z703921-AC** – Single 3/0-800 kcmil front entry

Option 2: Underground

- Line Side (2) **Z703917-AC** – Parallel #6-350 kcmil side entry
- Load Side (2) **Z705456-AC** – Parallel #6-350 kcmil bottom entry
- Neutral (1) **Z705420-AC** – Quad #6-350 kcmil front entry

Milbank Catalog Number

U4667-XT-9504

480 amp continuous-600 amp max-7 Terminal-3Ø4W
600V-WYE or DELTA-OH / UG-K7

Lug Requirements:

Option 1: Overhead

- (8) **Z703921-AC** – Single 3/0-800 kcmil front entry

Option 2: Underground

- (3) **Z703916-AC** – Single 3/0-800 kcmil side entry
- (5) **Z703921-AC** – Single 3/0-800 kcmil front entry

Option 3: Overhead

- (8) **Z703918-AC** – Parallel #4-350 kcmil front entry

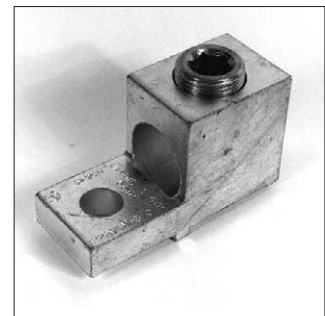
Option 4: Underground

- (3) **Z703919-AC** – Parallel #6-350 kcmil side entry
- (5) **Z703918-AC** – Parallel #4-350 kcmil front entry

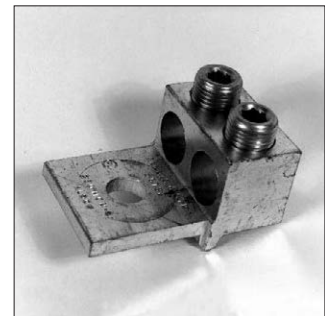
CONNECTOR CATALOG NUMBER	WIRE RANGE	TYPE	WIRE ENTRY
Z703916-AC	3/0-800 kcmil	SINGLE	SIDE
Z703921-AC	3/0-800 kcmil	SINGLE	FRONT
Z703918-AC	#4-350 kcmil	TWIN	FRONT
Z703919-AC	#6-350 kcmil	TWIN	SIDE
Z704693-AC	#2-500 kcmil	TWIN	SIDE
Z704694-AC	#4-500 kcmil	TWIN	FRONT
Z705545-AC	3/0-800 kcmil	SINGLE	SIDE
Z708124-AC	3/0-800 kcmil	SINGLE	BOTTOM
Z703917-AC	#6-350 kcmil	TWIN	SIDE
Z705456-AC	#6-350 kcmil	TWIN	BOTTOM
Z705420-AC	#6-350 kcmil	QUAD	FRONT



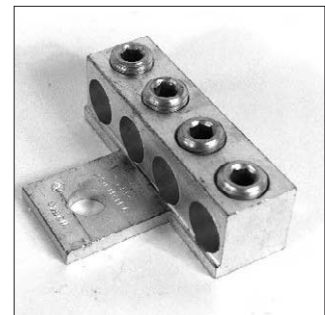
#Z703916-AC #58852



#Z703921-AC #56476



#Z703918-AC #56732



#Z705420-AC #56426



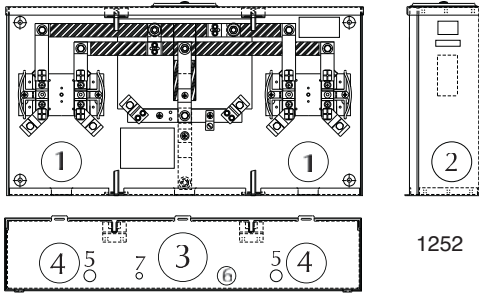
#Z703919-AC #58853

Utility requirements for this equipment may vary. Always consult the serving utility for their requirements before ordering or installing equipment in this catalog.

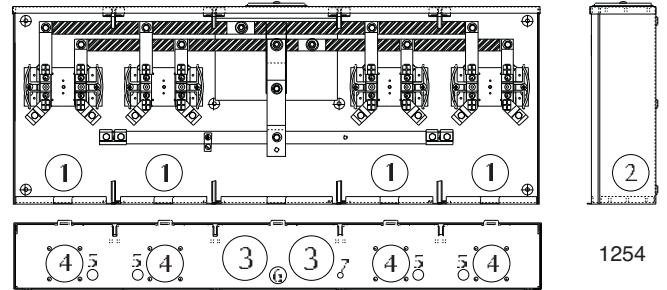




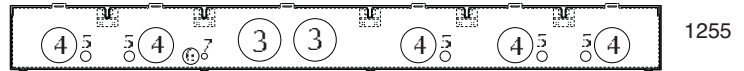
U1252-X-K1-CAPL



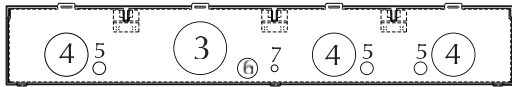
1252



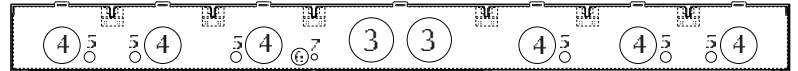
1254



1255



1253 Bottom



1256 Bottom

200 AMP / POSITION-4 TERMINAL - RINGLESS - 1Ø3W - OH/UG*

UTILITY	AMPS	NO. OF POS.	CATALOG NUMBER	HUB	CONNECTOR CU/AL		BY-PASS	DIMENSIONS			CONCENTRIC K.O.'S						
					LINE	LOAD		D"	W"	H"	1	2	3	4	5	6	7
DUKE, SCE&G PROGRESS EN	200	2	U1252-X-K1-CAPL	C.P.	350	#6-350	NONE	5 1/8	26 1/2	14	2 1/2	2 1/2	3	2 1/2	1/2	1	1/4
DUKE, SCE&G PROGRESS EN	200	3	U1253-X-K1-CAPL	C.P.	350	#6-350	NONE	5 1/8	34 11/16	14	2 1/2	2 1/2	3	2 1/2	1/2	1	1/4
DUKE, SCE&G PROGRESS EN	200	4	U1254-X-K2-CAPL	C.P.	(2)350	#6-350	NONE	5 1/8	42 7/8	16	2 1/2	2 1/2	3	2 1/2	1/2	1	1/4
DUKE, SCE&G PROGRESS EN	200	5	U1255-X-K2-CAPL	C.P.	(2)350	#6-350	NONE	5 1/8	54 7/8	16	2 1/2	2 1/2	3	2 1/2	1/2	1	1/4
DUKE, SCE&G PROGRESS EN	200	6	U1256-X-K2-CAPL	C.P.	(2)350	#6-350	NONE	5 1/8	63 1/16	18	2 1/2	2 1/2	3	2 1/2	1/2	1	1/4

All units are configured for underground service.

CONNECTORS: Extruded aluminum connectors are tin plated.

BUSSING: Bussing is 5/16" x 1" aluminum except for the 4, 5 & 6 position units where 3/8" x 1" aluminum bussing is supplied.

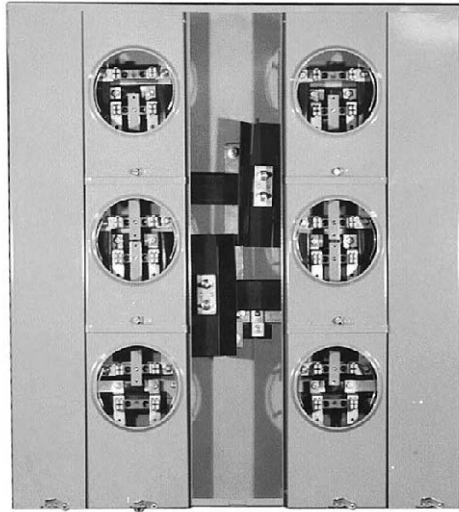
***FOR OVERHEAD SERVICE:** The U1254-56 units are factory assembled for underground service. If overhead service is desired, an extension kit is required. Order catalog number K3923 for the U1254 & U1255 units, and K3955 for the U1256 unit.

FIFTH TERMINAL: Field installed fifth terminal, order catalog number K5T.

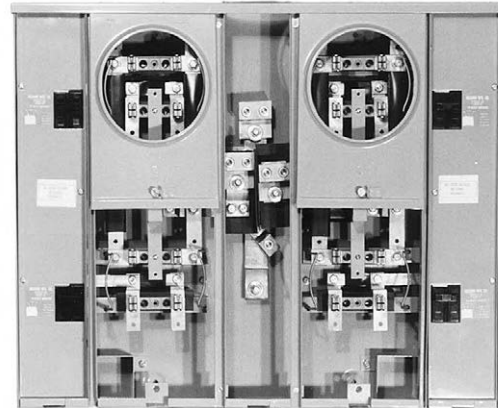
200 AMP / POSITION-4 TERMINAL-MULTIPLE POSITION METERING-HORIZONTAL GANG-RINGLESS-300 VAC

Utility requirements for this equipment may vary. Always consult the serving utility for their requirements before ordering or installing equipment in this catalog.





U2866-X



U2854-X-4/125
(Order circuit breakers as extra)

125 AMP/POSITION

VERTICAL

200 AMP/POSITION

NO. OF POS.	CATALOG NUMBER	MAIN BUS RATING	LINE CONNECTOR SIZE
2	U2852-X	200 AMP	*3/8"-16 STUD
3	U2853-X	200 AMP	*3/8"-16 STUD

NO. OF POS.	CATALOG NUMBER	MAIN BUS RATING	LINE CONNECTOR SIZE
2	U2862-X	250 AMP	*3/8"-16 STUD
3	U2863-X	300 AMP	*3/8"-16 STUD

125 AMP/POSITION

RECTANGULAR

200 AMP/POSITION

NO. OF POS.	CATALOG NUMBER	MAIN BUS RATING	LINE CONNECTOR SIZE
4	U2854-X	400 AMP	*3/8"-16 STUD
5	U2855-X	400 AMP	*3/8"-16 STUD
6	U2856-X	400 AMP	*3/8"-16 STUD

NO. OF POS.	CATALOG NUMBER	MAIN BUS RATING	LINE CONNECTOR SIZE
4	U2864-X	400 AMP	*3/8"-16 STUD
5	U2865-X	600 AMP	*3/8"-16 STUD
6	U2866-X	600 AMP	*3/8"-16 STUD

CONNECTOR KITS *

SIZE	SUFFIX	KIT NUMBER	COMPATIBLE WITH	WIRE RANGE
SINGLE	-K1	K1539	U2852-56 U2862-66	#6-350 or 2-1/0 / 250
	-K3	K1540	U2854-56 U2864-66	#4-600
TWIN	-K2	K1350	U2854-56 U2863-66	#6-350
	-K4	K1541	U2864-66	#2-600

*CONNECTORS: For line wire connector kits, order separately.

FIFTH TERMINALS: For field mounted fifth terminal order catalog number K2381. Order one per meter position (9 o'clock position only).

BREAKERS: Units have provision for one double pole main per meter position. Breakers not included. Order as extra Milbank.

PLUG-IN BREAKER COMPATIBILITY CHART

AMPS	CUTLER-HAMMER (WESTINGHOUSE)	SIEMENS (ITE)	SIEMENS MURRAY / CROUSE-HINDS	G.E.	SQ-D
125-200	HQP / BR / WBJ	—	MD	THQ	—
≤ 100	QP / BR / HQP	QP	MP	THQ	HOMELINE

Utility requirements for this equipment may vary. Always consult the serving utility for their requirements before ordering or installing equipment in this catalog.



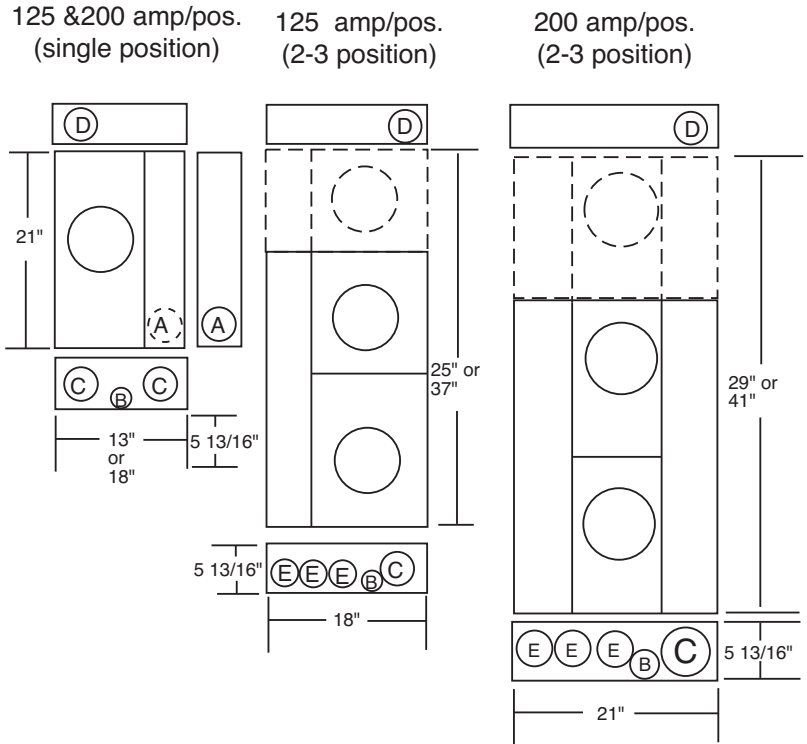


U2852-X

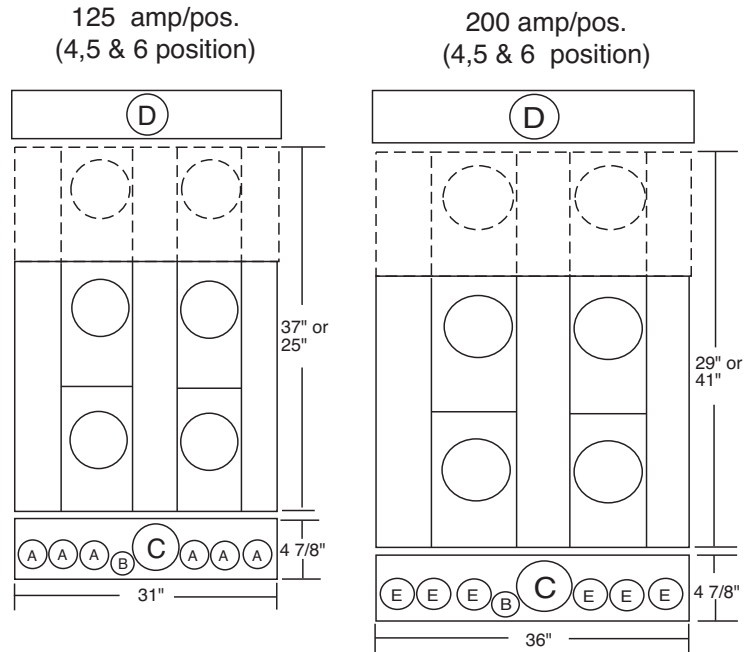
CONDOMINIUM METERING BANKS

FIG.	DIMENSIONS
A	1 1/4" CONCENTRIC K.O.
B	1/4, 1/2" CONCENTRIC K.O.
C	3" CONCENTRIC K.O.
D	4" HUB OPENING
E	2" CONCENTRIC K.O.

VERTICAL



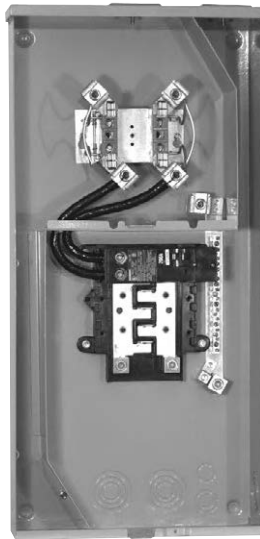
RECTANGULAR



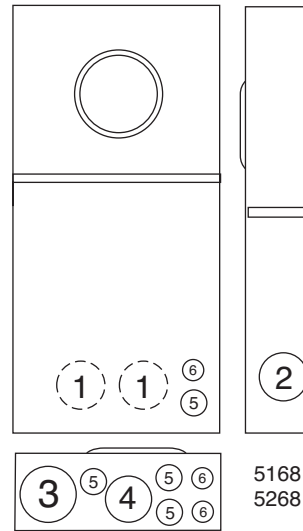
Utility requirements for this equipment may vary. Always consult the serving utility for their requirements before ordering or installing equipment in this catalog.



100, 150 & 200 AMP-4 TERMINAL-METER MAIN-RINGLESS



U5168-XTL-200



200 AMP-4 TERMINAL-METER MAIN-OVERHEAD / UNDERGROUND-22K AIC-120/240 VOLT-1Ø3W

AMPS	NO. OF CIRCUITS	CATALOG NUMBER	HUB	CONNECTORS		BY-PASS	DIMENSIONS			CONCENTRIC K.O.'S					
				LINE	LOAD		D"	W"	H"	1	2	3	4	5	6
*	100	U5168-XTL-100 ^①	C.P.	#6-350	#1/0-300 Breaker*	NONE	4 1/2	14 1/8	32	2	2	3	2 1/2	1 2, 3/4, 1	1 1/2, 3/4
*	100	U5168-XTL-100-KK ^①	C.P.	#6-350	#1/0-300 Breaker*	HORN	4 1/2	14 1/8	32	2	2	3	2 1/2	1 2, 3/4, 1	1 1/2, 3/4
	100	U5168-XTL-100-KK-5T ^①	C.P.	#6-350	#1/0-300 Breaker*	HORN	4 1/2	14 1/8	32	2	2	3	2 1/2	1 2, 3/4, 1	1 1/2, 3/4
	150	U5168-XTL-150	C.P.	#6-350	#1/0-300 Breaker*	NONE	4 1/2	14 1/8	32	2	2	3	2 1/2	1 2, 3/4, 1	1 1/2, 3/4
*	150	U5168-XTL-150-KK	C.P.	#6-350	#1/0-300 Breaker*	HORN	4 1/2	14 1/8	32	2	2	3	2 1/2	1 2, 3/4, 1	1 1/2, 3/4
*	150	U5168-XTL-150-KK-5T	C.P.	#6-350	#1/0-300 Breaker*	HORN	4 1/2	14 1/8	32	2	2	3	2 1/2	1 2, 3/4, 1	1 1/2, 3/4
*	200	U5168-XTL-200	C.P.	#6-350	#1/0-300 Breaker*	NONE	4 1/2	14 1/8	32	2	2	3	2 1/2	1 2, 3/4, 1	1 1/2, 3/4
*	200	U5168-XTL-200-KK	C.P.	#6-350	#1/0-300 Breaker*	HORN	4 1/2	14 1/8	32	2	2	3	2 1/2	1 2, 3/4, 1	1 1/2, 3/4
*	200	U5168-XTL-200-KK-5T	C.P.	#6-350	#1/0-300 Breaker*	HORN	4 1/2	14 1/8	32	2	2	3	2 1/2	1 2, 3/4, 1	1 1/2, 3/4
	150	U5268-XTL-150	C.P.	#6-350	#1/0-300 Breaker*	NONE	4 1/2	14 1/8	32	2	2	3	2 1/2	1 2, 3/4, 1	1 1/2, 3/4
	150	U5268-XTL-150-KK	C.P.	#6-350	#1/0-300 Breaker*	HORN	4 1/2	14 1/8	32	2	2	3	2 1/2	1 2, 3/4, 1	1 1/2, 3/4
*	200	U5268-XTL-200	C.P.	#6-350	#1/0-300 Breaker*	NONE	4 1/2	14 1/8	32	2	2	3	2 1/2	1 2, 3/4, 1	1 1/2, 3/4
*	200	U5268-XTL-200-KK	C.P.	#6-350	#1/0-300 Breaker*	HORN	4 1/2	14 1/8	32	2	2	3	2 1/2	1 2, 3/4, 1	1 1/2, 3/4

① Amperage rating is limited to main breaker rating. Interior has 10 branch circuit breaker provisions.

HUB: Supplied with (2) closing plates packed inside. Order hubs as a separate item. See accessory page for hub options.

INTERIOR: U5168 units have 8-circuit interior; U5268 units have 20-circuit interior.

FIFTH TERMINAL: Order K5T and field install for 208Y/120 network systems. Installs in the 9 o'clock position only.

BREAKERS: Rated 22K AIC with Milbank QNR2200H main installed.

INTERLOCK KIT: For generator auxiliary circuit breaker interlock, order K5815 for large QN with small frame Q; order K5820 for large frame QN with large frame QN. Also Q to Q order K5830

SUB-FEED LUGS: #6-350 kcmil sub-feed lugs provided on 8 circuit interior. Not available on 20 circuit interior.

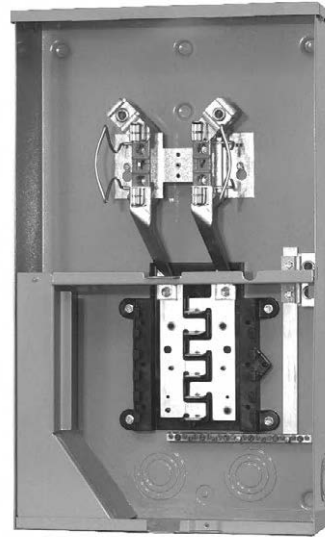
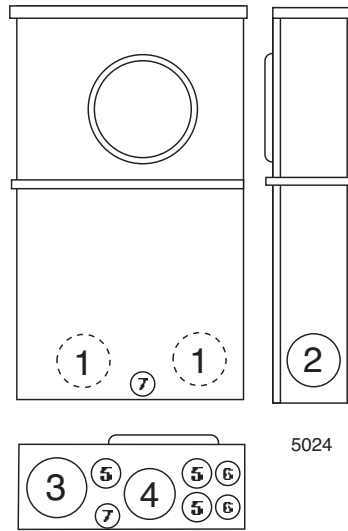
*STOCK ITEMS

MAIN CIRCUIT BREAKER CHART

Amperage	100	150	200
Catalog no.	Q2100H	QN2150RH	QN2200RH

Utility requirements for this equipment may vary. Always consult the serving utility for their requirements before ordering or installing equipment in this catalog.





UAP5024-XL

4 TERMINAL-RINGLESS-METER SOCKET / CB COMBO

AMPS	SERVICE	CATALOG NUMBER	HUB	CONNECTORS	BY-PASS	DIMENSIONS			CONCENTRIC K.O.'S						
				CU/AL		D"	W"	H"	1	2	3	4	5	6	7
200	OH/UG	UAP5024-XL	C.P.	#6-350 kcmil	NONE	4 1/2	14 1/8	24	2	2	3	2 1/2	1/2, 3/4, 1	1/2, 3/4	1/4, 1/2

BUSSING: Load side bus bars and circuit breaker interior are made from plated copper

WIREWAY: Provided with underground pull section wireway with removable cover

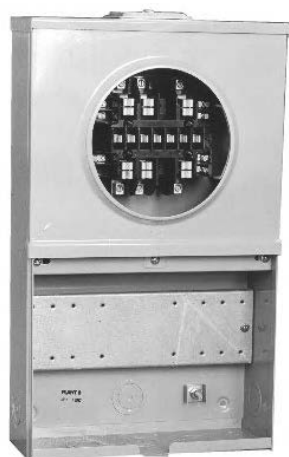
BREAKERS: Breaker section has provision for six double pole plug-in circuit breakers. All circuit breakers will be parallel.

To comply with NEC wire bending space requirements, the maximum single breaker amperage is 200 amps restricted to 3/0 copper conductor.

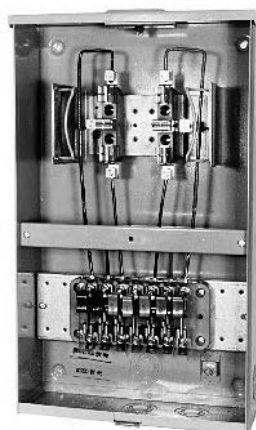
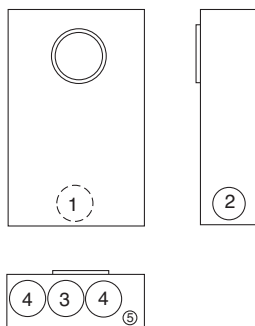
Utility requirements for this equipment may vary. Always consult the serving utility for their requirements before ordering or installing equipment in this catalog.



20 AMP-5, 6, 8 & 13 TERMINAL-TRANSFORMER RATED
RINGLESS / RING TYPE-WITH TEST SWITCH PROVISION-600 VAC



UC7449-XL



UC7532-RL-TS10-0109
(shown prewired with
Milbank Test Switch)



UC7478-YL

1 PIECE COVER—RINGLESS—WITH TEST SWITCH PROVISION *

NO. OF TERMS	METER FORM	CATALOG NUMBER	HUB	CONNECTORS CU	BY-PASS	DIMENSIONS			CONCENTRIC K.O.'S						
						D"	W"	H"	1	2	3	4	5	6	
5	3S	UC7442-RL	H.O.	#14 - #4 MAX	NONE	4 1/8	12	20	1 1/4	1 1/4	1 1/4	1 1/4	1 1/4	1 1/4	1/4, 1/2
6	4S	UC7478-RL	H.O.	#14 - #4 MAX	NONE	4 1/8	12	20	1 1/4	1 1/4	1 1/4	1 1/4	1 1/4	1 1/4	1/4, 1/2
8	5S	UC7444-RL	H.O.	#14 - #4 MAX	NONE	4 1/8	12	20	1 1/4	1 1/4	1 1/4	1 1/4	1 1/4	1 1/4	1/4, 1/2
13	6, 8, 9 & (ALT) 10S	UC7445-RL	H.O.	#14 - #4 MAX	NONE	4 1/8	12	20	1 1/4	1 1/4	1 1/4	1 1/4	1 1/4	1 1/4	1/4, 1/2

2 PIECE COVER—RINGLESS & RING TYPE—WITH TEST SWITCH PROVISION *

NO. OF TERMS	RINGLESS CATALOG NUMBER	RING TYPE CATALOG NUMBER	HUB	CONNECTORS CU	BY-PASS	DIMENSIONS			CONCENTRIC K.O.'S						
						D"	W"	H"	1	2	3	4	5	6	
5	UC7446-RL	UC7450-RL	H.O.	#14 - #4 MAX	NONE	4 1/8	12	20	1 1/4	1 1/4	1 1/4	1 1/4	1 1/4	1 1/4	1/4, 1/2
6	UC7532-RL	UC7636-RL	H.O.	#14 - #4 MAX	NONE	4 1/8	12	20	1 1/4	1 1/4	1 1/4	1 1/4	1 1/4	1 1/4	1/4, 1/2
8	UC7448-RL	UC7460-RL	H.O.	#14 - #4 MAX	NONE	4 1/8	12	20	1 1/4	1 1/4	1 1/4	1 1/4	1 1/4	1 1/4	1/4, 1/2
13	UC7449-RL	UC7461-RL	H.O.	#14 - #4 MAX	NONE	4 1/8	12	20	1 1/4	1 1/4	1 1/4	1 1/4	1 1/4	1 1/4	1/4, 1/2

HUBS: For proper hub selection see the hub suffix chart on the accessory page.

SEALING RINGS: Ring type units are supplied with one MR-2, snap type, sealing ring.

PREWIRING: If standard factory pre-wiring is required, refer to wiring diagrams in the general engineering section of this catalog. Determine appropriate diagram and send copy with order. If custom factory prewiring is required, specify on order. Be sure to include meter socket catalog number, test switch model and number, and meter form number. Please be sure to provide a copy of your wiring diagram.

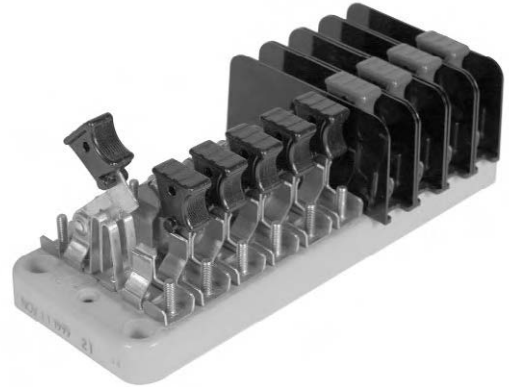
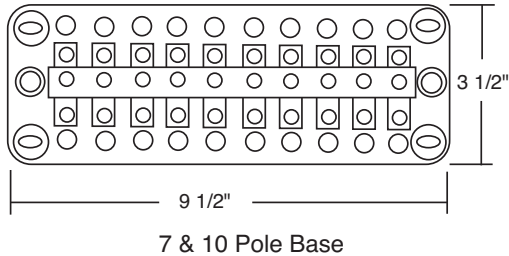
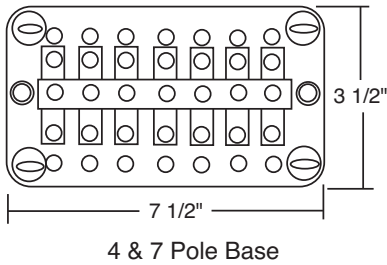
CONNECTORS: Units are supplied with sleeve type connectors (#4 max.) If compression type connectors (#10) are preferred, change catalog prefix to "S" (i.e. UC7445-XL becomes S7445-XL.) The "S" prefix also designates non-UL.

***TEST SWITCH COVER:** Units on this page are not designed for use with test switch covers.

SERVICE: Units are rated for overhead or underground service.

Utility requirements for this equipment may vary. Always consult the serving utility for their requirements before ordering or installing equipment in this catalog.





CATALOG NUMBER	4-POLE						
TS04-0101	X	P	<u>Pn</u>	X	C+	C	X
TS04-0103	X	P	<u>Pn</u>	X	C	C+	X
TS04-0104	X	C+	C	X	<u>P</u>	Pn	X

KEY	
P	Potential Switch
C+	Line side current switch with short circuit assembly
C	Load side current switch with test jack assembly
N	Neutral bar (no switch)
Pn	Neutral potential switch
X	Unused position on base
<u> </u>	Insulating barrier, isolates both sides of switch

CATALOG NUMBER	7-POLE						
TS07-0105	<u>P</u>	P	<u>Pn</u>	C+	C	C+	C
TS07-0107	<u>P</u>	P	<u>Pn</u>	C	C+	C	C+

CATALOG NUMBER	7-POLE ON A 10 POLE BASE									
TS07-0049	<u>P</u>	X	<u>P</u>	X	<u>Pn</u>	X	C+	C	C	C+
TS07-0106	X	<u>P</u>	C+	C	<u>P</u>	C+	C	<u>Pn</u>	X	X

CUSTOM POLE ARRANGEMENTS:
The key may be used to diagram your own pole arrangement. Be sure to specify base size and whether all C+ line side, current switch / shunt circuit assemblies are to be bussed together. The catalog numbers shown are connected in line-load pairs; therefore, if bussed is required, different catalog numbers will apply.

CATALOG NUMBER	10-POLE									
TS10-0109	P	<u>P</u>	P	<u>Pn</u>	C+	C	C+	C	C+	C
TS10-0110	<u>P</u>	C+	C	<u>P</u>	C+	C	<u>P</u>	C+	C	<u>Pn</u>
TS10-0111	P	<u>P</u>	P	<u>Pn</u>	C	C+	C	C+	C	C+
TS10-0112	C+	C	C+	C	C+	C	<u>P</u>	P	<u>P</u>	Pn

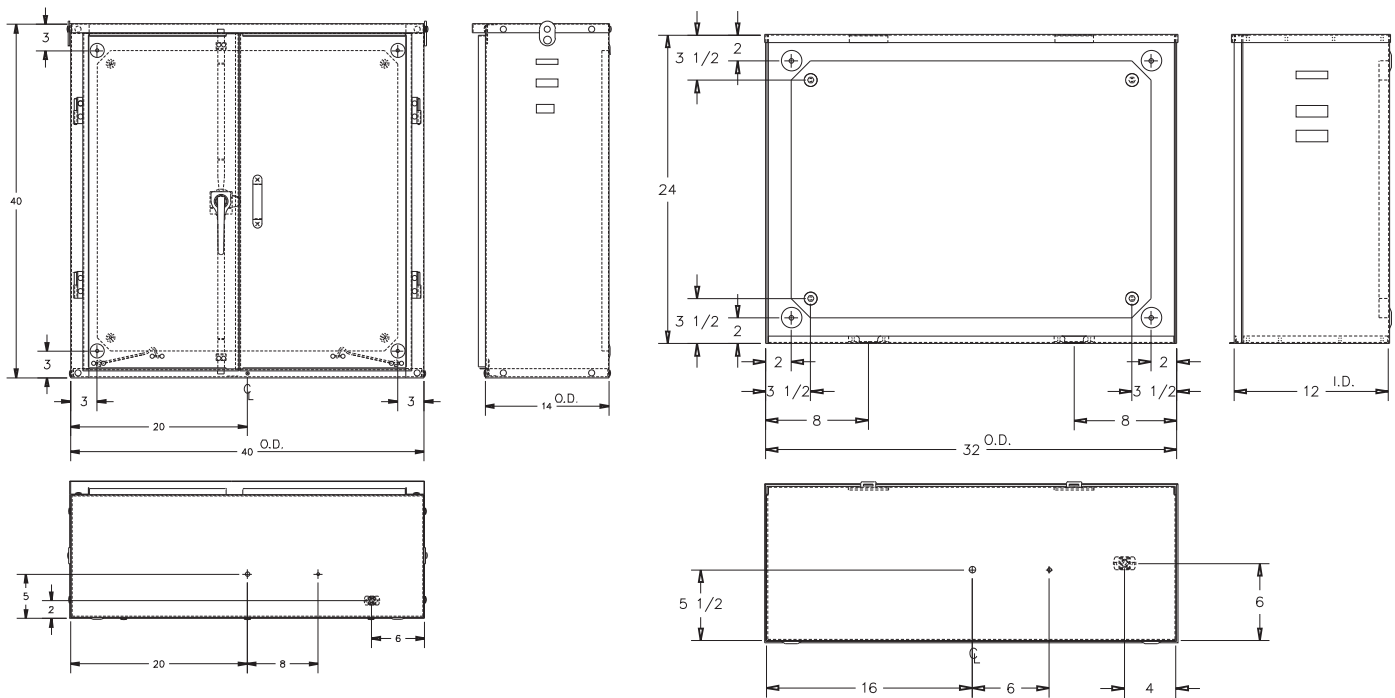
Utility requirements for this equipment may vary. Always consult the serving utility for their requirements before ordering or installing equipment in this catalog.

U4408-O

- Designed as a housing for instrument current transformers which are required for transformer-rated watthour metering. Additional applications include use as a junction or service box, and meter transformer, relay, or terminal assembly housing
- Rainproof top
- Weld in Ground Stud
- Pad-locking door handle
- Wood Back Panel
- **Type 3R**

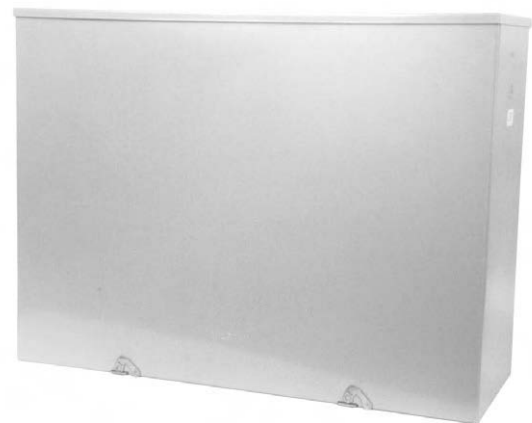


CATALOG NUMBER	GAUGE STEEL	DIMENSIONS			PANEL BOARD	
		H"	W"	D"	H"	W"
U4408-O	12	40	40	14	34	34



U4410-O

- Designed as a housing for instrument current transformers which are required for transformer-rated watthour metering. Additional applications include use as a junction or service box, and meter transformer, relay, or terminal assembly housing
- Rainproof top
- Weld in Ground Stud
- Removable cover
- Mounting embossments on back of enclosure
- Wood back panel
- **Type 3R**



CATALOG NUMBER	GAUGE STEEL	DIMENSIONS			PANEL BOARD	
		H"	W"	D"	H"	W"
U4410-O	14	24	32	12	20	28

Utility requirements for this equipment may vary. Always consult the serving utility for their requirements before ordering or installing equipment in this catalog.



APPLICATIONS

These units are ideal for controlling and metering:

- Traffic signals
- Street lighting
- Irrigation / sprinkler systems
- Cell towers / telephone vaults
- Pump stations
- Temporary power for fairgrounds, swap meets, outdoor markets, portable offices, holiday lights, etc.
- Outdoor lighting for athletic fields, tennis and basketball courts, parking lots, landscaping and subdivision entrances, etc.



AVAILABLE FACTORY-INSTALLED OPTIONS

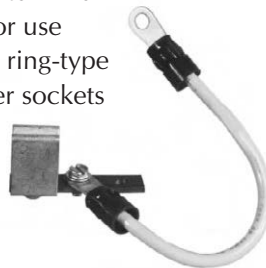
- Meter sockets – ring type or **ringless**, to 400 amp (unmetered pedestals also available)
- Main and branch breakers or T fuses
- Distribution – copper load centers & panel boards
- Clocks / timers / relays
- Photoelectric cells and controls
- Power receptacles – pin & sleeve, twist lock or straight blade
- Contactors – definite purpose, electrical or mechanically held, IEC and mercury types
- Surge protection & lightning arrestors
- Reserve inlet generator receptacle with interlocked circuit breakers
- Motor starters, relays
- Push button controls
- Thermostat controls, fans and heating strips
- Power blocks and terminal blocks
- Steel, aluminum and plywood back boards
- Transformers
- Interlock devices for circuit breakers
- Available in steel, aluminum (raw painted or anodized) or stainless steel construction with powder-coated finish available in 8 standard colors or special ordered RAL colors.
- Available for applications up to 400 amp, 120V, 208V, 240V, 277V, 480V – 1Ø or 3Ø.

ACCESSORIES

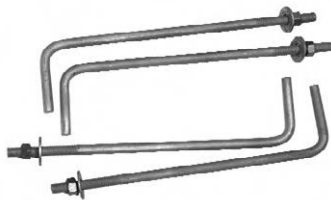


K3865
Fifth terminal kit for use with ringless meter sockets

105J
Fifth terminal kit for use with ring-type meter sockets



CP-TC7D 7-day time clock kit
CP-TC24H 24-hour time clock kit
CP-TCWIRE Male four-pin connector and wiring harness for use with time clocks other than shown



CP-ABK5/8
Anchor bolt kit (includes four 5/8 - 13 x 18" anchor bolts)



CP-16PDMNT-CALT
Pedestal mounting base for 16" pedestal
CP-24PDMNT-CALT
Pedestal mounting base for 24" pedestal (includes mounting hardware)



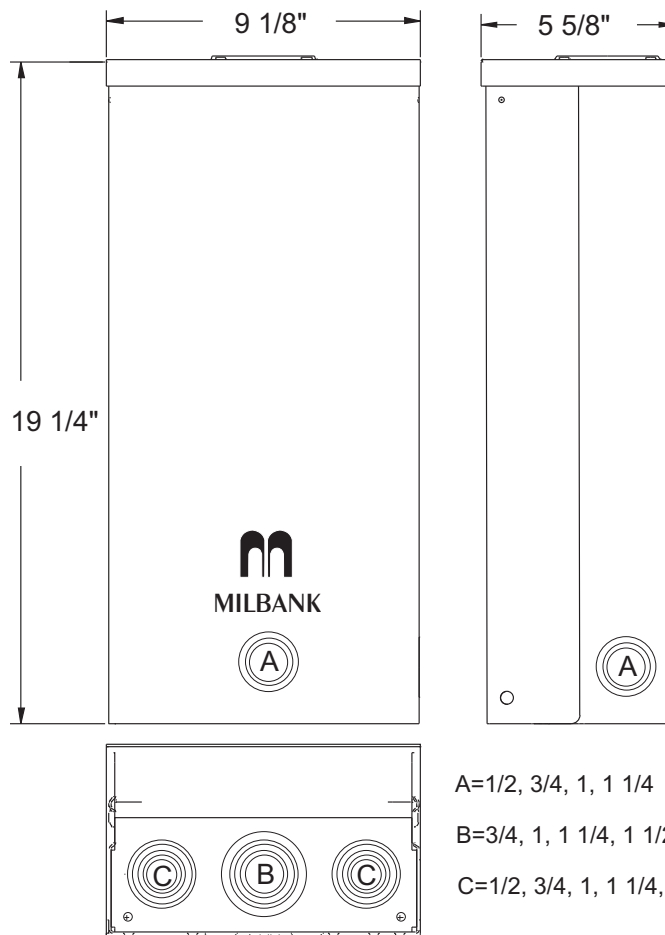
CP-PE-HOA-3POS
HOA switch – for field installation

Utility requirements for this equipment may vary. Always consult the serving utility for their requirements before ordering or installing equipment in this catalog.





U5000-XL-75



A=1/2, 3/4, 1, 1 1/4
 B=3/4, 1, 1 1/4, 1 1/2, 2
 C=1/2, 3/4, 1, 1 1/4, 1 1/2


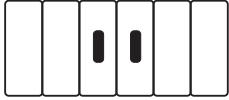
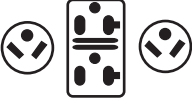
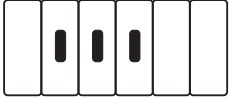



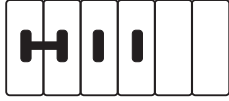
SPECIFICATIONS:

- UL Listed 125 Amp, 120/240 Volt, 1Ø Power Outlet.
- Short circuit current withstand rating 10,000 RMS symmetrical amperes.
- Type 3R welded enclosure for durable outdoor use.
- Enclosure constructed with galvanized 16 gauge steel.
- ASA 61 grey polyester powder coat finish.
- Convenient concentric knock-out configurations and mounting embosses.
- Hub opening with closure plate allows for meter or light kit retrofit.
- Wire terminations accept copper or aluminum conductors for loop feed wiring.
 Line: (2) 1/0-#12 Ground: (2) 1/0-#14 & (4) #6-#14 Neutral: (2) 1/0-#14 & (4) #6-#14
- Six circuit plated copper interior accepts standard plug-in type circuit breakers. Rated up to 125 amps.
- Three position **self-grounded** receptacle bridge accepts most standard NEMA receptacles with mounting plates.
- Components factory wired with stranded copper wire.
- Lockable hinge cover and dead front are removable for installation and maintenance. Stay-open hinge cover has safety interlock on dead front. Dead front cover must be removed before hinge cover can be removed.
- Low wattage, 120 volt fluorescent site light available. Factory or field installable.
- Unit weight: 21 lbs.

Utility requirements for this equipment may vary. Always consult the serving utility for their requirements before ordering or installing equipment in this catalog.



U5000 STANDARD MODELS






CATALOG #	RECEPTACLES		CIRCUIT BREAKERS	
◆ U5000-XL-41	(1) TT30R (1) 5-20R GFI		(1) 30A, 1P, 120V (1) 20A, 1P, 120V	
◆ U5000-XL-332	(2) TT30R (1) 5-20R GFI		(2) 30A, 1P, 120V (1) 20A, 1P, 120V	
◆ U5000-XL-55	(1) 14-50R (1) 5-20R GFI		(1) 50A, 2P, 120/240V (1) 20A, 1P, 120V	
◆ U5000-XL-75	(1) 14-50R (1) TT30R (1) 5-20R GFI		(1) 50A, 2P, 120/240V (1) 30A, 1P, 120V (1) 20A, 1P, 120V	
U5000-XL-75GB	(1) 14-50R (1) TT30R (1) 5-20R		(1) 50A, 2P, 120/240V (1) 30A, 1P, 120V (1) 20A, 1P, 120V, GFI	

U5000 STANDARD BASE MODEL

Order up to (3) receptacle / breaker kits. Sold separately for field installation.

CATALOG #	DESCRIPTION
◆ U5000-XL	Base model without receptacles or circuit breakers.

RECEPTACLE & CIRCUIT BREAKER KITS

CATALOG #	RECEPTACLES	CIRCUIT BREAKERS	CONDUCTORS	CONFIGURATION
◆ K5400-520GR	5-20R Duplex GFI	20 Amp, 1 Pole	12 Awg	 GFI Rec.
◆ K5400-520GB	5-20R Duplex	20 Amp, 1 Pole GFI	12 Awg	 GFI CB
◆ K5400-TT30	TT30R	30 Amp, 1 Pole	10 Awg	
K5400-TT30GB	TT30R	30 Amp, 1 Pole GFI	10 Awg	 GFI CB
◆ K5400-1450	14-50R	50 Amp, 2 Pole	8 Awg	

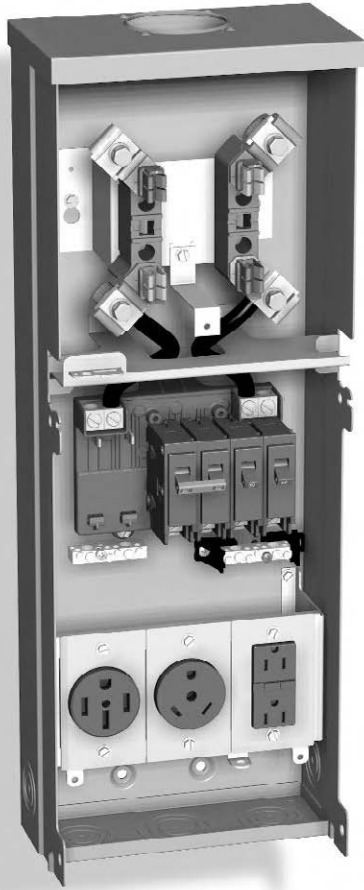
◆ Stock model. Availability subject to prior sale.

Note: 20 Amp GFI required at each RV site by UL and NEC 551-71

INTERNAL LIGHT KITS *Factory or field installed. See accessory page.*

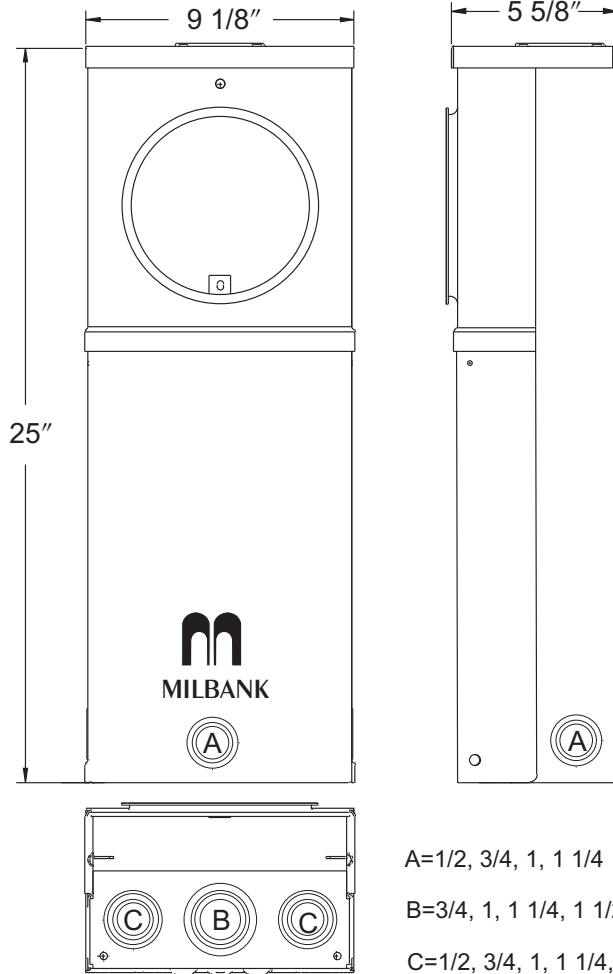
Utility requirements for this equipment may vary. Always consult the serving utility for their requirements before ordering or installing equipment in this catalog.

SERIES U5100—METERED—SURFACE MOUNT POWER OUTLET



U5100-XL-75

Loop feed not available.










SPECIFICATIONS

- UL Listed 125 Amp, 120/240 Volt—1Ø Power Outlet.
- Short circuit current withstand rating 10,000 RMS symmetrical amperes.
- Type 3R welded enclosure for durable outdoor use.
- Enclosure constructed with galvanized 16 gauge steel.
- ASA 61 grey polyester powder coat finish.
- Convenient concentric knock-out configurations and mounting embosses.
- Hub opening with closure plate allows for pagoda light kit retrofit.
- Wire terminations accept copper or aluminum conductors. Loop feed not available.
 Line: (1) #6-250 kcmil Ground: (2) 1/0-#14 & (4) #6-#14 Neutral: (2) 1/0-#14 & (4) #6-#14
- Six circuit plated copper interior accepts standard plug-in type circuit breakers. Rated up to 125 amps.
- Three position **self-grounded** receptacle bridge accepts most standard NEMA receptacles with mounting plates.
- Four terminal, drawn ring type meter socket with aluminum sealing ring.
 Ringless type meter socket available. Use **U5101** prefix.
- Components factory wired with stranded copper wire.
- Lockable hinge cover and dead front are removable for installation and maintenance.
 Stay-open hinge cover has safety interlock on dead front. Dead front must be removed before hinge cover can be removed.
- Low wattage, 120 volt fluorescent site light available. Factory or field installable.
- Unit weight: 26 lbs.

Utility requirements for this equipment may vary. Always consult the serving utility for their requirements before ordering or installing equipment in this catalog.



U5100 STANDARD MODELS

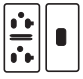
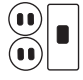



CATALOG #	RECEPTACLES		CIRCUIT BREAKERS	
◆ U5100-XL-41	(1) TT30R (1) 5-20R GFI		(1) 30A, 1P, 120V (1) 20A, 1P, 120V	
U5100-XL-41GB	(1) TT30R (1) 5-20R		(1) 30A, 1P, 120V (1) 20A, 1P, 120V	
◆ U5100-XL-55	(1) 14-50R (1) 5-20R GFI		(1) 50A, 2P, 120/240V (1) 20A, 1P, 120V	
◆ U5100-XL-75	(1) 14-50R (1) TT30R (1) 5-20R GFI			
U5100-XL-75GB	(1) 14-50R (1) TT30R (1) 5-20R	(1) 50A, 2P, 120/240V (1) 30A, 1P, 120V (1) 20A, 1P, 120V, GFI		
U5100-XL-552GR	(2) 14-50R (1) 5-20R GFI		(2) 50A, 2P, 120/240V (1) 20A, 1P, 120V, GFI	

U5100 STANDARD BASE MODELS

Order up to (3) receptacle / breaker kits. Sold separately for field installation.

CATALOG #	DESCRIPTION
◆ U5100-XL	Ring-type base model without receptacles or circuit breakers.
◆ U5101-XL	Ringless-type base model without receptacles or circuit breakers.

RECEPTACLE & CIRCUIT BREAKER KITS

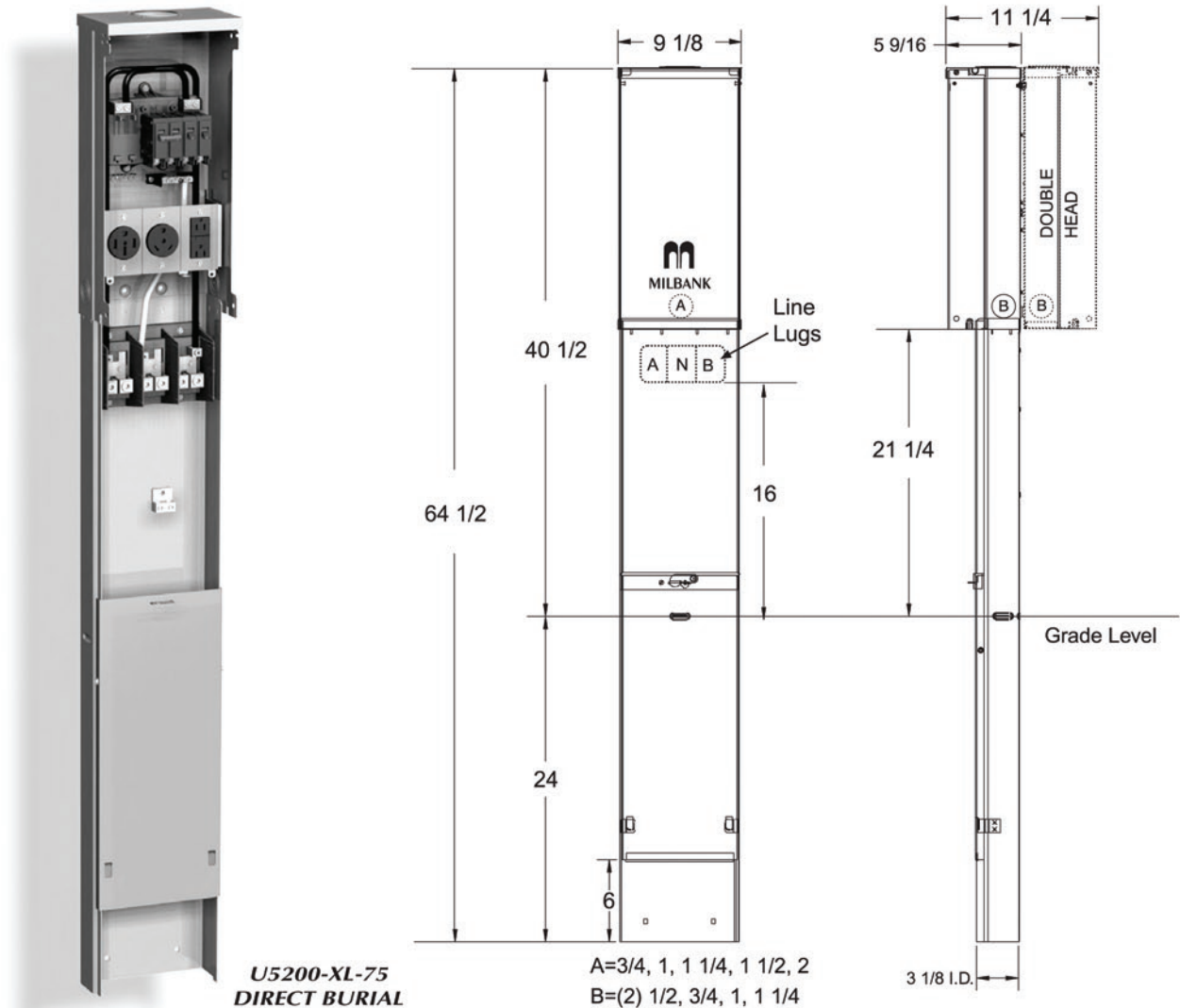
CATALOG #	RECEPTACLES	CIRCUIT BREAKERS	CONDUCTORS	CONFIGURATION
◆ K5400-520GR	5-20R Duplex GFI	20 Amp, 1 Pole	12 Awg	 GFI Rec.
◆ K5400-520GB	5-20R Duplex	20 Amp, 1 Pole GFI	12 Awg	 GFI CB
◆ K5400-TT30	TT30R	30 Amp, 1 Pole	10 Awg	
K5400-TT30GB	TT30R	30 Amp, 1 Pole GFI	10 Awg	 GFI CB
◆ K5400-1450	14-50R	50 Amp, 2 Pole	8 Awg	

◆ **Stock model. Availability subject to prior sale.**

Note: 20 Amp GFI required at each RV site by UL and NEC 551-71

INTERNAL LIGHT KITS Factory or field installed. See accessory page.

Utility requirements for this equipment may vary. Always consult the serving utility for their requirements before ordering or installing equipment in this catalog.



SPECIFICATIONS

- UL Listed 125 Amp, 120/240 Volt—1Ø Power Outlet.
- Short circuit current withstand rating 10,000 RMS symmetrical amperes.
- Type 3R welded enclosure for durable outdoor use.
- Enclosure constructed with galvanized 16 gauge steel.
- Direct burial or pad mounted post constructed with 16 gauge galvanized steel. Two removable front covers for ease of installation. Accepts up to (3) 2 1/2" conduits.
- ASA 61 grey polyester powder coat finish.
- Convenient concentric knock-out configurations. See note A & B above.
- Hub opening with closure plate allows for meter or light kit retrofit.
- Wire terminations accept copper or aluminum conductors for loop feed wiring.
Line: (2) #6-350 kcmil Ground: (2) #14-2/0 Neutral: (2) #6-350 kcmil
- Six circuit plated copper interior accepts standard plug-in type circuit breakers. Rated up to 125 amps.
- Three position **self-grounded** receptacle bridge accepts most standard NEMA receptacles with mounting plates.
- Components factory wired with stranded copper wire.
- Lockable hinge cover and dead front are removable for installation and maintenance. Stay-open hinge cover has safety interlock on dead front. Dead front must be removed before hinge cover can be removed.
- Low wattage, 120 volt fluorescent site light available. Factory or field installable.
- Unit weight: Single—48 lbs. Double—70 lbs.

Utility requirements for this equipment may vary. Always consult the serving utility for their requirements before ordering or installing equipment in this catalog.

U5200 STANDARD MODELS

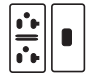
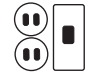



SINGLE HEAD CATALOG #	DBL. HEAD CATALOG#	RECEPTACLES	CIRCUIT BREAKERS
◆ U5200-XL-41 U5200-XL-41GB	◆ U5220-XL-41	(1) TT30R (1) 5-20R GFI (1) TT30R (1) 5-20R	(1) 30A, 1P, 120V (1) 20A, 1P, 120V (1) 30A, 1P, 120V (1) 20A, 1P, 120V, GFI
◆ U5200-XL-332		(2) TT30R (1) 5-20R GFI	(2) 30A, 1P, 120V (1) 20A, 1P, 120V
◆ U5200-XL-75 U5200-XL-75GB	◆ U5220-XL-75	(1) 14-50R (1) TT30R (1) 5-20R GFI (1) 14-50R (1) TT30R (1) 5-20R	(1) 50A, 2P, 120/240V (1) 30A, 1P, 120V (1) 20A, 1P, 120V (1) 50A, 2P, 120/240V (1) 30A, 1P, 120V (1) 20A, 1P, 120V, GFI

U5200 STANDARD BASE MODELS

Order up to (3) receptacle / breaker kits. Sold separately for field installation.

CATALOG #	DESCRIPTION
◆ U5200-XL	Single head base model on direct burial post.
◆ U5210-XL	Single head base model on pad mount post. Order K5410 pad mount base separately.
◆ U5220-XL	Double head base model on direct burial post.
◆ U5230-XL	Double head base model on pad mount post. Order K5410 pad mount base separately.

RECEPTACLE & CIRCUIT BREAKER KITS

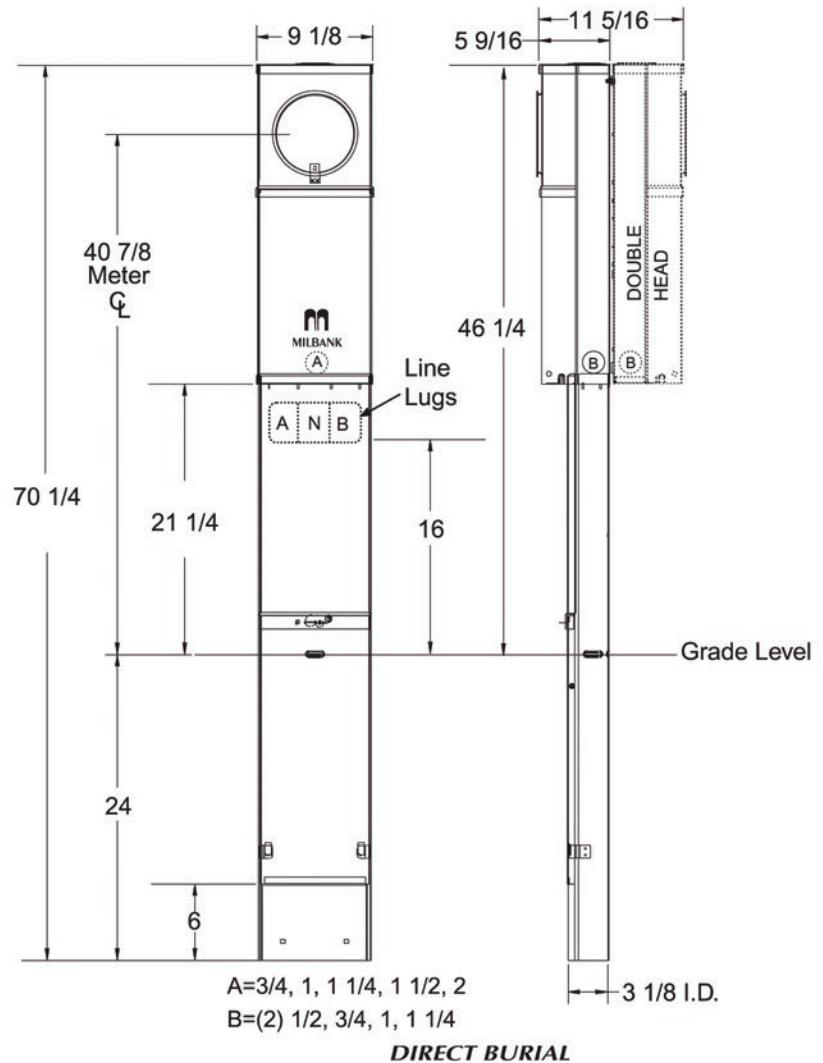
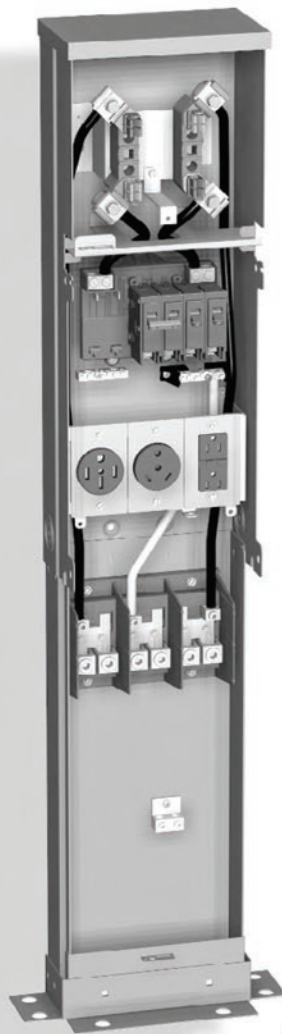
CATALOG #	RECEPTACLES	CIRCUIT BREAKERS	CONDUCTORS	CONFIGURATION
◆ K5400-520GR	5-20R Duplex GFI	20 Amp, 1 Pole	12 Awg	 GFI Rec.
◆ K5400-520GB	5-20R Duplex	20 Amp, 1 Pole GFI	12 Awg	 GFI CB
◆ K5400-TT30	TT30R	30 Amp, 1 Pole	10 Awg	
K5400-TT30GB	TT30R	30 Amp, 1 Pole GFI	10 Awg	 GFI CB
◆ K5400-1450	14-50R	50 Amp, 2 Pole	8 Awg	

◆ Stock model. Availability subject to prior sale.

Note: 20 Amp GFI required at each RV site by UL and NEC 551-71

INTERNAL LIGHT KITS Factory or field installed. See accessory page.

Utility requirements for this equipment may vary. Always consult the serving utility for their requirements before ordering or installing equipment in this catalog.



SPECIFICATIONS

- UL Listed 125 Amp, 120/240 Volt—1Ø Power Outlet.
- Short circuit current withstand rating 10,000 RMS symmetrical amperes.
- Type 3R welded enclosure for durable outdoor use.
- Enclosure constructed with galvanized 16 gauge steel.
- Direct burial or pad mounted post constructed with 16 gauge galvanized steel. Two removable front covers for ease of installation. Accepts up to (3) 2 1/2" conduits.
- ASA 61 grey polyester powder coat finish.
- Wire terminations accept copper or aluminum conductors for loop feed wiring.
Line: (2) #6-350 kcmil Ground: (2) #14-2/0 Neutral: (2) #6-350 kcmil
- Six circuit plated copper interior accepts standard plug-in type circuit breakers. Rated up to 125 amps.
- Three position **self-grounded** receptacle bridge accepts most standard NEMA receptacles with mounting plates.
- Four terminal, drawn ring type meter socket with aluminum sealing ring.
- Components factory wired with stranded copper wire.
- Lockable hinge cover and dead front are removable for installation and maintenance. Stay-open hinge cover has safety interlock on dead front. Dead front must be removed before hinge cover can be removed.
- Low wattage, 120 volt fluorescent site light available. Factory or field installable.
- Unit weight: Single—53 lbs. Double—80 lbs.

Utility requirements for this equipment may vary. Always consult the serving utility for their requirements before ordering or installing equipment in this catalog.

U5300 STANDARD MODELS

SINGLE HEAD CATALOG #	DBL. HEAD CATALOG#	RECEPTACLES	CIRCUIT BREAKERS
◆ U5300-O-41		(1) TT30R (1) 5-20R GFI	(1) 30A, 1P, 120V (1) 20A, 1P, 120V
◆ U5300-O-55		(1) 14-50R (1) 5-20R GFI	(1) 50A, 2P, 120/240V (1) 20A, 1P, 120V
◆ U5300-O-75	◆ U5320-O-75	(1) 14-50R (1) TT30R (1) 5-20R GFI	(1) 50A, 2P, 120/240V (1) 30A, 1P, 120V (1) 20A, 1P, 120V
◆ U5300-O-552GR		(2) 14-50R (1) 5-20R GFI	(2) 50A, 2P, 120/240V (1) 20A, 1P, 120V

U5300 STANDARD BASE MODELS

Order up to (3) receptacle / breaker kits. Sold separately for field installation.

CATALOG #	DESCRIPTION
◆ U5300-O	Single head base model on direct burial post.
◆ U5310-O	Single head base model on pad mount post. Order K5410 pad mount base separately.
◆ U5320-O	Double head base model on direct burial post.
◆ U5330-O	Double head base model on pad mount post. Order K5410 pad mount base separately.

RECEPTACLE & CIRCUIT BREAKER KITS

CATALOG #	RECEPTACLES	CIRCUIT BREAKERS	CONDUCTORS	CONFIGURATION
◆ K5400-520GR	5-20R Duplex GFI	20 Amp, 1 Pole	12 Awg	GFI Rec.
◆ K5400-520GB	5-20R Duplex	20 Amp, 1 Pole GFI	12 Awg	GFI CB
◆ K5400-TT30	TT30R	30 Amp, 1 Pole	10 Awg	
K5400-TT30GB	TT30R	30 Amp, 1 Pole GFI	10 Awg	GFI CB
◆ K5400-1450	14-50R	50 Amp, 2 Pole	8 Awg	

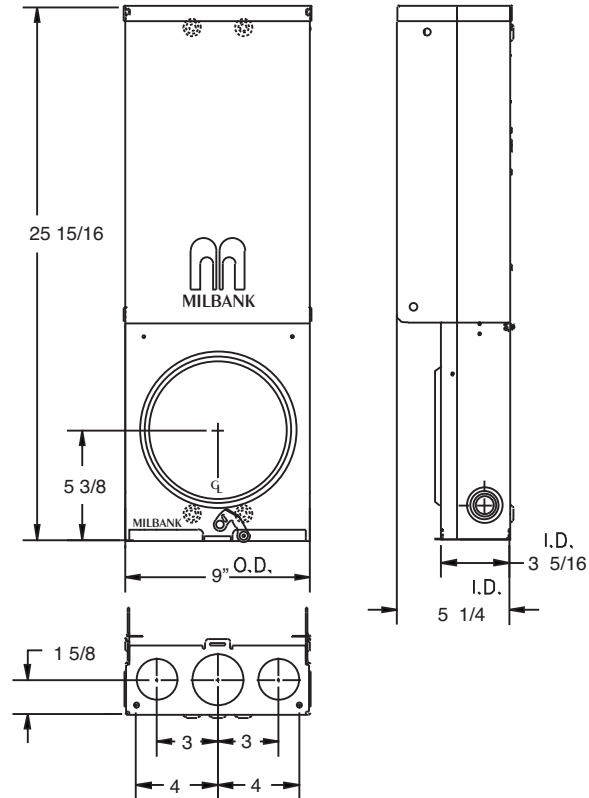
◆ Stock model. Availability subject to prior sale.

Note: 20 Amp GFI required at each RV site by UL and NEC 551-71

INTERNAL LIGHT KITS Factory or field installed. See accessory page.



U4908-O-11GR

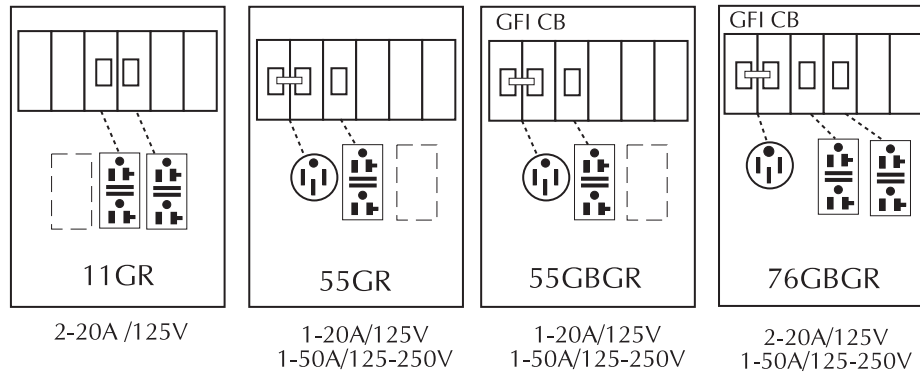


SPECIFICATIONS

- Available in ringless style (U4908 series) or ring type (U4909 series)
- UL Listed 100 Amp, 120/240 Volt – 1Ø Underground Service Power Outlet
- Short circuit current withstand rating 10K RMS symmetrical amperes
- Type 3R welded enclosure for durable outdoor use
- Enclosure constructed with galvanized 16 gauge steel
- ASA 61 grey polyester powder coat finish
- Convenient concentric knock-out configurations and mounting embosses
- Wire terminations accept copper or aluminum conductors
Service-Line & Neutral: (1) #6-2/0 Load Ground: (2) 1/0-#14 & (4) #6-#14
Load Neutral: (2) 1/0-#14 & (4) #6-#14 Service Ground: #2-#8
- Six circuit plated copper interior accepts standard plug-in type circuit breakers
- Three position **self-grounded** receptacle bridge accepts most standard NEMA receptacles with mounting plates
- Four terminal, ringless meter socket with stainless steel locking hasp. Ring type socket has aluminum **MR-2** snap action sealing ring
- Lockable hinge cover and deadfront are removable for installation and maintenance. Stay-open hinge cover has safety interlock on deadfront. Deadfront must be removed before hinge cover can be removed.
- Tamper proof fastening available

Utility requirements for this equipment may vary. Always consult the serving utility for their requirements before ordering or installing equipment in this catalog.

U4908 / U4909 STANDARD CONFIGURATIONS



ORDERING INFORMATION

CATALOG #	SOCKET TYPE	DESCRIPTION
◆ U4908-O	Ringless	Order base model and up to three factory installed receptacle/breaker kit separately from list below. Other kits available. Consult factory.
◆ U4908-O-11GR	Ringless	
◆ U4908-O-55GBGR	Ringless	
◆ U4909-O	Ring type	Order base model and up to three factory installed receptacle/breaker kit separately from list below. Other kits available. Consult factory.
◆ U4909-O-11GR	Ring type	
◆ U4909-O-55GBGR	Ring type	

RECEPTACLE & CIRCUIT BREAKER KITS

CATALOG NUMBER	AMP	BLADE	VOLTAGE	NEMA CONFIG.	TYPE	CIRCUIT BREAKER TYPE
◆ K5400-520	20	Straight	120	5-20	Std. Duplex	20 Amp 1 Pole
◆ K5400-520GR	20	Straight	120	5-20	GFI Duplex	20 Amp 1 Pole
◆ K5400-620	20	Straight	240	6-20	Single	20 Amp 2 Pole
◆ K5400-620GB	20	Straight	240	6-20	Single	20 Amp 2 Pole GFI
◆ K5400-1450	50	Straight	120/240	14-50	Single	30 Amp 2 Pole
◆ K5400-1450GB	50	Straight	120/240	14-50	Single	30 Amp 2 Pole GFI

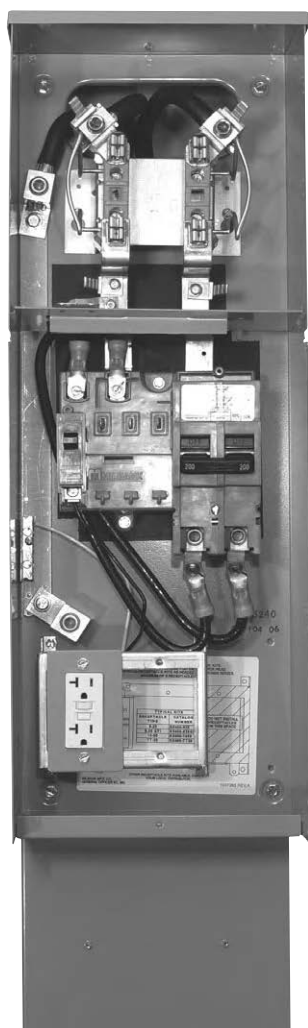
Flat cover may not close completely with twist locking devices in use.

Order slope-front 3R cover # **1107681** separately to use with twist lock type receptacles.

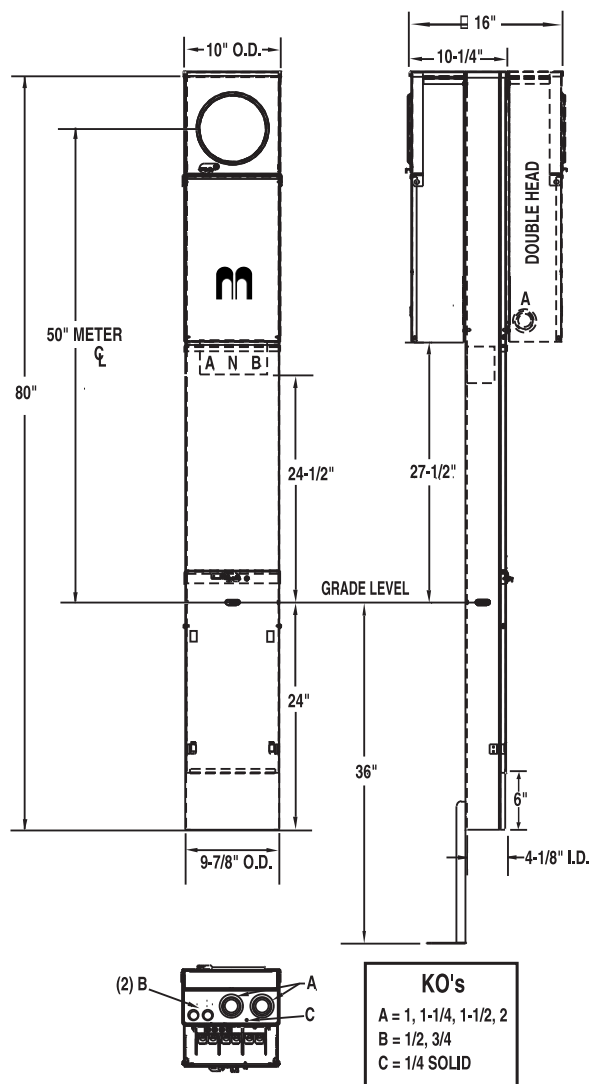
- ◆ Stock item – availability subject to prior sale.
- Non-stock items – minimum order quantity required

Utility requirements for this equipment may vary. Always consult the serving utility for their requirements before ordering or installing equipment in this catalog.

200 AMP SERIES U5136 & U5137 RINGLESS METERED PEDESTALS



U5136-O-200S with series wired main & K5400-520GR kit



SPECIFICATIONS

- UL Listed – conforms to EUSERC drawing number 307
- 200 amp maximum, 120/240 volt, single phase, three wire meter socket
- Ringless meter socket with horn bypass and stainless steel latch
- Short circuit withstand rating 22K AIC.
- Type 3R construction for durable outdoor use, one piece post – lockable and sealable
- Milbank grey polyester powder coat finish
- Wire terminations accept copper or aluminum conductors
- Line & Neutral: (2) #6-350 kcmil per phase
- Line Ground: (4) #14-1/0
- Load (CB): 2/0 to 300 kcmil per pole
- Load Neutral: (1) #6-350 kcmil
- Load Ground: (2) #14-1/0, (4) #14/6
- Milbank plug-in main circuit breaker. Available in 100, 125, 150 & 200 amp. Type **UQFPH-M**.
- Four-circuit plated copper interior accepts (2) 2-pole or (4) 1-pole standard plug-in type circuit breakers up to a total of 125 amps maximum. Acceptable manufacturers: Cutler-Hammer, GE or Siemens
- Factory or field installable receptacle bridge and receptacle / circuit breaker kits available. See accessories.

Utility requirements for this equipment may vary. Always consult the serving utility for their requirements before ordering or installing equipment in this catalog.



SINGLE PEDESTAL (Direct Burial)

<u>CATALOG NUMBER</u>	<u>MAIN BREAKER</u>	<u>MAIN CB</u>	<u>BRANCH</u>	<u>WEIGHT (lbs)</u>
◆ U5136-O-100S	◆ UQFPH-M-100	100	4 Circuit	82
◆ U5136-O-200S	◆ UQFPH-M-200	200	4 Circuit	82
◆ U5136-O (parallel wired)	provision for UQFPH-M Series	—	4 Circuit	80

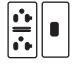


SINGLE PEDESTAL (Pad Mount)

U5138-O-200S	UQFPH-M-200	200	4 Circuit	82
U5138-O (parallel wired)	provision for UQFPH-M Series	—	4 Circuit	80

DOUBLE PEDESTAL (Direct Burial)

<u>CATALOG NUMBER</u>	<u>MAIN BREAKER</u>	<u>MAIN CB</u>	<u>BRANCH</u>	<u>WEIGHT (lbs)</u>
◆ U5137-O-100S	(2) UQFPH-M-100	100	4 Circuit	115
◆ U5137-O-200S	(2) UQFPH-M-200	200	4 Circuit	115
U5137-O (parallel wired)	provision for (2) UQFPH-M Series	—	4 Circuit	111

RECEPTACLE / CIRCUIT BREAKER KITS AND ACCESSORIES (ORDER SEPARATELY)

<u>CATALOG #</u>	<u>RECEPTACLE</u>	<u>CIRCUIT BREAKER</u>	<u>CONDUCTOR</u>	<u>CONFIGURATION</u>
◆ K5400-520GR	5-20R Duplex GFI	20 Amp, 1 Pole	12 Awg	 GFI Rec.
◆ K5400-TT30	TT30R	30 Amp, 1 Pole	10 Awg	
◆ K5400-1450	14-50R	50 Amp, 2 Pole	8 Awg	
◆ K5400-BRIDGE-1POS	Self-grounded one position receptacle bridge with hardware			
◆ K5400-BRIDGE-2POS	Self-grounded two position receptacle bridge with hardware			
◆ K5415	Stabilizer Foot with hardware			
◆ K5035	Pad Mount Kit with hardware for U5138/39 pad mount pedestals required			
◆ K5T	5th Terminal for 208y / 120 volt 3-wire service			
◆ K5193	Bus kit to convert series-wired main breaker to parallel			
◆ K5194	Wire kit to convert parallel-wired main breaker to series			
◆ K3450	Telephone / CATV mounting bracket (mounts left or right)			
◆ K5039	Penta bolt utility cover			

- Up to two receptacle / circuit breaker kits can be field-installed in each powerhead. Order mounting bridge and receptacle kits separately from above. For three receptacles or factory-installed kits, contact factory.
 - Receptacle / circuit breaker kits include receptacle, circuit breaker, connected wire, cover plate and mounting screws. Other receptacle / circuit breaker kits available.
 - **K5415** Stabilizer Foot sold separately. Recommended for double pedestals.
 - Pad mount pedestals require **K5035** pad mount kit. Order separately.
 - ◆ Stock item – availability subject to prior sale.
- Non-stock items – minimum order quantity required.

Utility requirements for this equipment may vary. Always consult the serving utility for their requirements before ordering or installing equipment in this catalog.

TELEPHONE AND CABLE TV KIT



Application:

- Mounts to rear of pedestal series **U5200 & U5300**. May also be adaptable to a wooden or similar structure

Features:

- Single: 16" galvanized raceway, (1) **RJ11** telephone jack & (1) Type F coaxial CATV jack
- Dual: 16" galvanized raceway, (2) **RJ11** telephone jack & (1) Type F coaxial CATV jack
- Includes mounting hardware & instructions

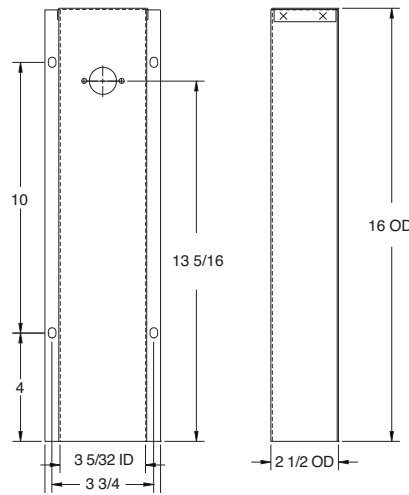
Ordering:

- Single Line Telephone & Cable TV kit order catalog number **K4709-02**
- Weatherproof Type 3R "in-use" cover available. Add **-3R** to catalog numbers above.

NOTE:

- **Confirm acceptability with Cable TV & Telephone provider before ordering or installing these devices.**

WATER SHROUD WITH HARDWARE



Application:

- Used to cover water pipe and provide means to mount hose bib to rear of pedestal

Features:

- Includes mounting hardware and instructions
- Matches **K4709** kits when mounted side by side

Ordering:

- Order catalog number **K4709-WS**

***SINGLE RECEPTACLE ONLY POWER OUTLET**



Application:

- Overhead/Underground Power Outlet Receptacle, suitable for RV, temporary service, campground, marina & booyard equipment

Features:

- Type 3R, 120/240 volt single phase
- Lockable cover

Ordering:

- Order catalog number from chart shown to the left.

P-10	P-10GR	P-13	P-23	P-54
20A 120V	20A 120V GFI	30A 120V	20A 3P3W	50A 120/250V

WARNING: Always disconnect power prior to installing these devices.

Utility requirements for this equipment may vary. Always consult the serving utility for their requirements before ordering or installing equipment in this catalog.



INTERCHANGEABLE UNIT HUBS



HUB ADAPTER PLATE
(Converts 4" opening to 2½")
S8324



SMALL "RL" OPENING (STANDARD)

SUFFIX	SIZE	MILBANK NO.
WL	1"	A7514
YL	1¼"	A7515
ZL	1½"	A7516
DL	2"	A7517
EL	2½"	A7518



REMOVABLE HUB CLOSING PLATE

LARGE "R" OPENING (HEAVY DUTY)

SUFFIX	SIZE	MILBANK NO.
F	3"	A8110
G	3½"	A8111
H	4"	A8112

DESCRIPTION	SUFFIX	CAT. #
STANDARD (for -RL opening)	-XL	A7551
LARGE (for -R opening)	-X	A9064

CLOSING COVERS



METER CLOSING PLATE
(Ring type / Ringless)
6003 (Gray Plastic)
6116 (Clear Plastic)



METAL CLOSING PLATE
(For Ringless sockets)
CP-21

(For Ring type sockets)
MCP

HUB SUFFIX CHART

O	Plain Top	WL	1"	For -RL Opening
RL	Small Hub Opening	YL	1¼"	For -RL Opening
R	Large Hub Opening	ZL	1½"	For -RL Opening
XL	Small Closing Plate	DL	2"	For -RL Opening
X	Large Closing Plate	EL	2½"	For -RL Opening
RXL	Large Hub Opening adapted to small Closing Plate	F	3"	For -R Opening
		G	3½"	For -R Opening
RRL	Large Hub Opening adapted to small Hub Opening	H	4"	For -R Opening

CONNECTOR KITS



SINGLE

For use with 3/8"-16 stud type units only

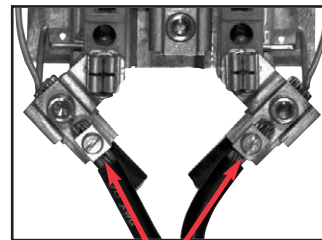
SUFFIX	CATALOG #	(3 per set) - 1 Ø
K1	K1539	6-350 kcmil
K3	K1540	4-600 kcmil or (2) 1/0-250 kcmil
K3L	K1540L	4-600 kcmil or (2) 1/0-250 kcmil Non-rotating
SUFFIX	CATALOG #	(4 per set) - 3 Ø
K5	K3082	6-350 kcmil
K7	K3441	4-600 kcmil or (2) 1/0-250 kcmil



TWIN

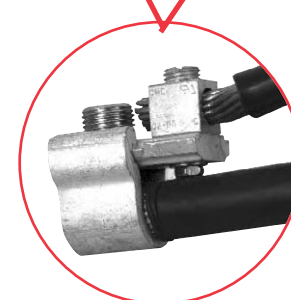
SUFFIX	CATALOG #	(3 per set) - 1 Ø
K2	K1350	6-350 kcmil
K2L	K1350L	6-350 kcmil Non-rotating
K4	K1541	4-600 kcmil
SUFFIX	CATALOG #	(4 per set) - 3 Ø
K6	K3442	6-350 kcmil
K8	K3083	4-600 kcmil

LOAD TAP CONNECTORS (3 per set)



Replaces the **load side** slide-in nut assembly on Milbank 200 amp sockets. Allows for a 100 amp tap location in addition to the #6-350 kcmil load-side connector.

K5022 Includes Safety Barrier Extensions- for applications over 300 VAC.



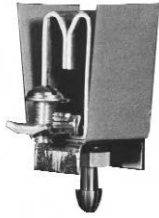
K4977-INT
INTERNAL HEX
K5022-INT
INTERNAL HEX

Utility requirements for this equipment may vary. Always consult the serving utility for their requirements before ordering or installing equipment in this catalog.



FIFTH TERMINALS

Consult factory for 5th terminal selection



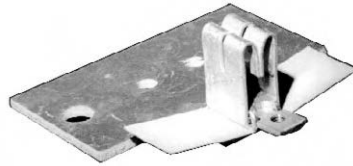
**100-200 amp
"PLUG-IN" FIFTH TERMINAL
5T8K2**



**HEAVY DUTY JAW
CLAMPING
K3865
(K3866 w/out neutral wire)**

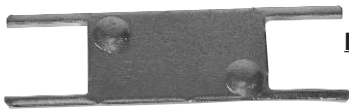


**200 amp
FIFTH TERMINAL
K5T
(New style block with square hole)**



**FOR CONDO
METERING BANKS
(125-200 amp)
K2381**

ANTI-INVERSION CLIP



K4802

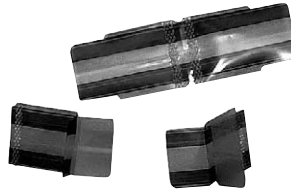
BYPASS LINK



**K8180
(Bypass links sold in pairs)**

DISCONNECT SLEEVE *

**M5-144
(*NOT TO BE USED WITH LEVER
BYPASS SOCKETS)**



SEALING RINGS



**SNAP ACTION
MR-2**

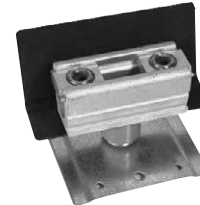


**SCREW TYPE
(Stainless Steel)
MR-4**

**STAINLESS STEEL
MR2-SS**

ISOLATED NEUTRAL KIT

K1047



(Kit isolates existing neutral)

TRIPLEX GROUND



**K1190
(For factory installed triplex
ground add suffix "-TG" to the
catalog number.)**

PLUG-IN BREAKER COMPATIBILITY CHART

AMPS	MILBANK	CUTLER-HAMMER (WESTINGHOUSE)	SIEMENS (ITE)	SIEMENS MURRAY / CROUSE-HINDS	G.E.	SQ-D
125-200	Q / QN	HQP / BR / WBJ	Q / QN	MD	THQ	—
≤ 100	Q	QP / BR / HQP	QP	MP	THQ	HOMELINE

Utility requirements for this equipment may vary. Always consult the serving utility for their requirements before ordering or installing equipment in this catalog.



MAXIMUM NUMBER OF CONDUCTORS IN CONDUIT*

TYPE	CONDUCTOR SIZE AWG, MCM	CONDUIT TRADE SIZES (INCHES)									
		1/2	3/4	1	1 1/4	1 1/2	2	2 1/2	3	3 1/2	4
RHW & RHH (without outer covering) THW	14	6	10	16	29	40	65	93	143	192	
	12	4	8	13	24	32	53	76	117	157	
	10	4	6	11	19	26	43	61	95	127	163
	8	1	3	5	10	13	22	32	49	66	85
	6	1	2	3	7	10	16	23	36	48	62
TW THW FEPB (6 thru 2), RHW and RHH (without outer covering) RH, THHW	1/0		1	1	2	3	5	8	12	16	21
	2/0		1	1	1	3	5	7	10	14	18
	3/0		1	1	1	2	4	6	9	12	15
	4/0		1	1	1	1	3	5	7	10	13
	250			1	1	1	2	4	6	8	10
	300			1	1	1	2	3	5	7	9
	350			1	1	1	1	3	4	6	8
	400			1	1	1	1	2	4	5	7
	500				1	1	1	1	3	4	6
	600					1	1	1	3	4	5
	700					1	1	1	2	3	4
	750					1	1	1	2	3	4

*This table is for concentric stranded conductors only. For cables with compact conductors refer to N.E.C.

*** ALLOWABLE AMPACITIES OF INSULATED COPPER & ALUMINUM CONDUCTORS (3W IN CONDUIT) 75°C (167°F)**

*CU		AL or Cu-Clad AL	
A	B	A	C
18	—	—	—
16	—	—	—
14	20†	—	—
12	25†	12	20†
10	35†	10	30†
8	50	8	40
6	65	6	50
4	85	4	65
3	100	3	75
2	115	2	90
1	130	1	100
1/0	150	1/0	120
2/0	175	2/0	135
3/0	200	3/0	155
4/0	230	4/0	180
250	255	250	205
300	285	300	230
350	310	350	250
400	335	400	270
500	380	500	310
600	420	600	340
700	460	700	375
750	475	750	385

A = Size: AWG/MCM

B = Ampere Rating for Insulation Types:

FEPW, RH, RHW, THW, THWN, XHHW, USE, 2W.

C = Ampere Rating for Insulation Types:

RH, RHW, THW, THWN, XHHW, USE

(Per NEC table 310-16)

AMPACITY CORRECTION FACTORS

AMBIENT TEMP. C°	CORRECTION FACTOR	AMBIENT TEMP. F°
21 - 25	1.05	70 - 77
26 - 30	1.00	79 - 86
31 - 35	.94	88 - 95
36 - 40	.88	97 - 104
41 - 45	.82	106 - 113
46 - 50	.75	115 - 122
51 - 55	.67	124 - 131
56 - 60	.58	133 - 140
61 - 65	.33	142 - 158
66 - 70	—	160 - 176

Overall ampere ratings of UL Listed Milbank multiple position meter sockets are based on **1993 N.E.C. Manual article 220-32** and **ANSI / UL-414** (except where restricted by line connector size.) These requirements provide for a diversity factor / demand factor being utilized in determining the overall (main bus / lug) rating of a gang socket. All Milbank UL Listed gang sockets meet or exceed these diversity factor/demand factor requirements. Standard overall ampacity ratings for UL Listed and non UL Listed gang sockets are as shown in the chart below. Ampere ratings of meter sockets are based on the meter socket being wired with 75° C insulated wire conductor, sized in accordance with **Table 310-16** of the **National Electric Code**.

GANG SOCKET OVERALL AMPACITIES

NO. OF METER POSITIONS	100A / POS. AMPACITY	125A / POS. AMPACITY	150A / POS. AMPACITY	200A / POS. AMPACITY
2	200A	200A	200A	200A
3	200A	225A	225A	270A
4	200A	250A	270A	360A
5	225A	285A	338A	450A
6	270A	330A	396A	528A

† Unless otherwise permitted elsewhere in the Code, the overcurrent protection for conductor types marked with an obelisk (†) shall not exceed 15 amps for 14 AWG, 20 amps for 12 AWG, and 30 amps for 10 AWG copper; or 15 amps for 12 AWG and 25 amps for 10 AWG aluminum and copper-clad aluminum after any correction factors for ambient temperature and number of conductors have been applied.

All meter sockets are 600 Volt rated unless otherwise noted.

All meter socket ampacity ratings are continuous duty unless otherwise noted.

IMPORTANT NOTE

In addition to national and local electrical codes, many utilities have specific requirements for metering equipment. Always consult the serving utility for their specifications and requirements prior to ordering or installing Milbank meter mounting equipment.

BEFORE ENERGIZING

- A. Give equipment a thorough visual examination to determine that:
 - 1) No shipping or installation damage exists.
 - 2) Proper clearances have been maintained.
 - 3) All connections have been made.
 - 4) Equipment is clean and dry.
- B. Make a thorough examination to:
 - 1) Verify tightness of all bolted connections (see table below).
 - 2) Manually operate all circuit breakers, switches, relays, etc.
 - 3) Check rigidity of all mountings, bus bars and components.
 - 4) Use test equipment to check continuity of circuitry and integrity of insulation.
- C. All switches and circuit breakers should be in the "off" position.
- D. Verify that manual meter bypass (if applicable) is in non-bypass position.
- E. Install cover and/or close doors.
- F. If installation is not being energized at this time, follow "after-energizing" steps listed below. These steps will secure the installation in case of accidental energization.

WHEN ENERGIZING

- A. Use caution and follow established safety procedures:
 - 1) Wear safety apparel.
 - 2) Use safety equipment.
 - 3) Take action to prevent injury to yourself and others in the event of failure of the installation.
 - 4) Take action to prevent/decrease damage to property in the event of failure of the installation.
 - 5) If you are unsure how to safely energize the installation, get someone who is knowledgeable to do it.

AFTER ENERGIZING

- A. Secure the installation:
 - 1) To prevent accidental contact with energized parts, cover all openings with approved filler devices.
 - 2) To prevent unauthorized access, secure all covers and/or doors with approved security devices.
 - 3) Attach/post information to advise others of potential hazards associated with the installation.

RECOMMENDED TORQUE FOR GENERAL APPLICATIONS*

NOMINAL SIZE	JOINT DESCRIPTION		HEAD TYPE	TORQUE (INCH LBS.)
	SCREW	NUT		
10	BRASS	Brass Nut or Extruded Hole	ALL	20-25 in. lbs.
10	STEEL	CU or AL Busbar $\leq 1/8"$	ALL	25-30 in. lbs.
10	STEEL	Steel Nut or EH; CU or AL Busbar $> 1/8"$	ALL	30-35 in. lbs.
12	STEEL	Aluminum Extruded Hole	ALL	30-35 in. lbs.
12	STEEL	Steel Nut or Extruded Hole	ALL	40-50 in. lbs.
1/4	STEEL	Aluminum Extruded Hole	ALL	40-50 in. lbs.
1/4	STEEL	Steel Nut or EH; CU or AL Busbar	ALL	50-60 in. lbs.
5/16	STEEL	Aluminum Extruded Hole	HEX	60-70 in. lbs.
5/16	STEEL	Steel Nut or EH; CU or AL Busbar	HEX	100-150 in. lbs.
3/8	STEEL	Steel Nut	HEX	150-200 in. lbs.
1/2	STEEL	Steel Nut	HEX	200-250 in. lbs.

*Interior labels typically indicate the required torque for wire connectors and studs, and should be referenced first.

EH: Extruded Hole

CU: Copper

AL: Aluminum

MATERIALS

STEEL QUALITY

The meter equipment listed in this catalog is made of galvanized steel (AISI* G90) to afford the best possible weather proofing. *American Iron and Steel Institute.

STEEL SHEET

16 gauge, galvanized, sheet: 1 1/4 oz./ sq.ft. class zinc-coated.
(AISI G90)
14 gauge, galvanized, sheet: 1 1/4 oz./ sq.ft. class zinc-coated.

ALUMINUM EXTRUSION

Wire-Terminals: Alloy; 6061-T6, Tin-plated for CU/AL wire.
Bus Bar: Alloy; 6101-o & 6063-O

ALUMINUM SHEET

3000 series aluminum sheet, H14, or 5052 series aluminum sheet, H32. Where applicable thicknesses range from .064 — .125

COPPER SHEET & BUS

Electrolytic copper with tin plating in most applications.

INSULATING MATERIALS

- In most units, support bases for current-carrying components are molded from fiberglass reinforced high-strength, track resistant, thermoset polyester molding compounds.
- Clear or black safety shields and polarity barriers are molded from high-strength, track resistant, polycarbonate molding compounds.
- Various sheet insulating materials, as appropriate for the application are utilized in the fabrication of flat, formed and punched component parts and barriers.

FINISH

PROCESS

Light gray “state of the art” electrostatically applied powder paint offers a durable, non-fading finish. For further information concerning the chemical analysis of the weather resistant finish, please contact the factory.

METAL FASTENERS

Zinc-coated with a chromate dip.

RATING

NEMA RATING

All Milbank meter sockets, CT cans and meter socket / breaker units have a type 3R rating.

DIAGRAM A

1 \emptyset 2W with 1 P.T. & 1 C.T.
Single Stator Meter(2W1 \emptyset) - Form 3S
5T Socket, Test Switch #TS04-0101

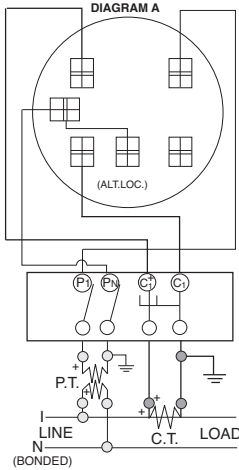


DIAGRAM E

3 \emptyset 3W "A" with 2 P.T.'s & 2 C.T.'s
2 Stator Meter - Form 5S
8T Socket, Test Switch #TS07-0105

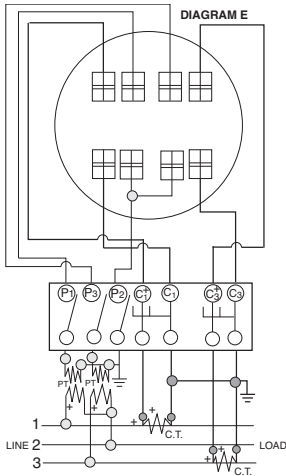


DIAGRAM I

3 \emptyset 4W "Y" or "A" with 3 C.T.'s
"Y" 3 Stator Meter - Form 9S
"A" 2 Stator Meter - Form 8S
13T Socket, Test Switch #TS10-0109

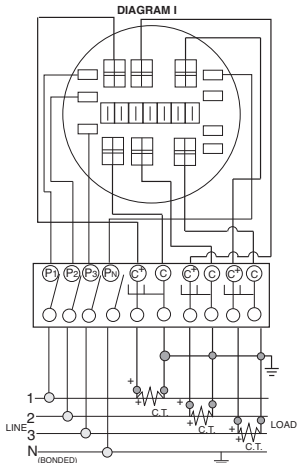


DIAGRAM B

1 \emptyset 3W with 1 C.T.
Single Stator Meter(2W1 \emptyset) - Form 3S
5T Socket, Test Switch #TS04-0101

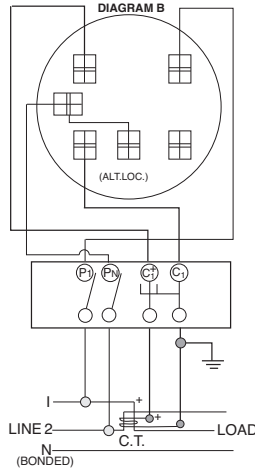


DIAGRAM F

3 \emptyset 3W "A" with 2 C.T.'s
2 Stator Meter - Form 5S
8T Socket, Test Switch #TS07-0105

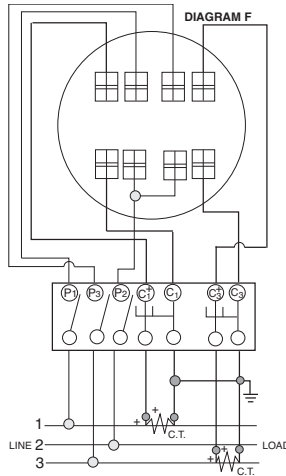


DIAGRAM J

3 \emptyset 4W "Y" with 3 P.T.'s & 3 C.T.'s
3 Stator Meter - Form 9S
13T Socket, Test Switch #TS10-0109

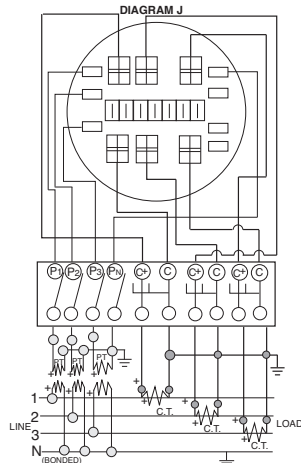


DIAGRAM C

1 \emptyset 3W with 2 C.T.'s
Single Stator Meter(3W1 \emptyset) - Form 4S
6T Socket, Test Switch #TS07-0105

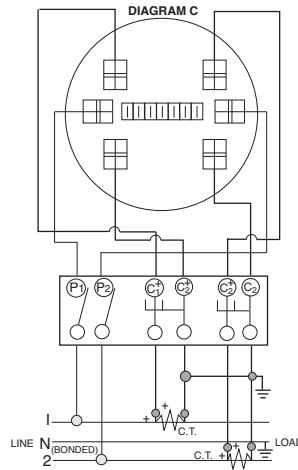


DIAGRAM G

3 \emptyset 4W "Y" with 3 C.T.'s
2 1/2 Stator Meter - Form 6S
13T Socket, Test Switch #TS10-0109

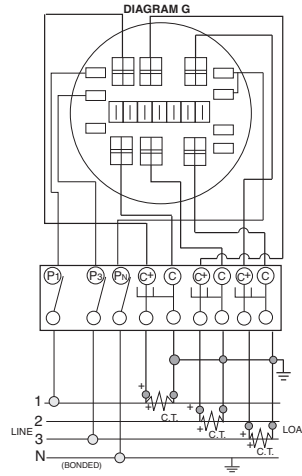


DIAGRAM D

1 \emptyset 3W or 3W Network with 2 C.T.'s
2 Stator Meter - Form 5S
8T Socket, Test Switch #TS07-0105

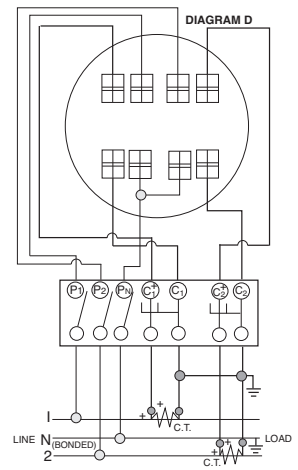
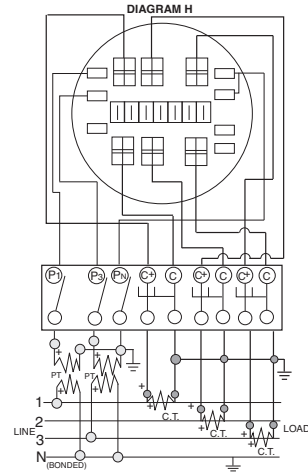


DIAGRAM H

3 \emptyset 4W "Y" with 2 P.T.'s & 3 C.T.'s
2 1/2 Stator Meter - Form 6S
13T Socket, Test Switch #TS10-0109



PREWIRING: If standard factory prewiring is required, refer to wiring diagrams on this page. Determine appropriate diagram and send a copy with order. If custom factory prewiring is required, specify on order. Be sure to include meter socket catalog number, test switch make and catalog number, meter form number and provide a copy of your wiring diagram.

NORTH & SOUTH CAROLINA CATALOG SKU INDEX BY PAGE #

SKU	PAGE #	SKU	PAGE #	SKU	PAGE #
105J	25	TS04-0101	23	U5136-O	37
5T8K2	40	TS04-0103	23	U5136-O-100S	37
A7514	39	TS04-0104	23	U5136-O-200S	37
A7515	39	TS07-0049	23	U5137-O	37
A7516	39	TS07-0105	23	U5137-O-100S	37
A7517	39	TS07-0106	23	U5137-O-200S	37
A7518	39	TS07-0107	23	U5138-O	37
A7551	39	TS10-0109	23	U5138-O-200S	37
A8110	39	TS10-0110	23	U5168-XLT-150	20
A8111	39	TS10-0111	23	U5168-XLT-100	20
A8112	39	TS10-0112	23	U5168-XLT-100-KK	20
A9064	39	U1129-O-K3L-K2L	13	U5168-XLT-100-KK-5T	20
CP-16PDMNT-CALT	25	U1252-X-K1-CAPL	17	U5168-XLT-150-KK	20
CP-24PDMNT-CALT	25	U1253-X-K1-CAPL	17	U5168-XLT-150-KK-5T	20
CP-ABK5/8	25	U1254-X-K2-CAPL	17	U5168-XLT-200	20
CP-PE-HOA-3POS	25	U1255-X-K2-CAPL	17	U5168-XLT-200-KK	20
CP-TC24H	25	U1256-X-K2-CAPL	17	U5168-XLT-200-KK-5T	20
CP-TC7D	25	U1797-O-K3L-K2L	13	U5200-XL	31
CP-TCWIRE	25	U1980-XLT-QG-CAPL	8	U5200-XL-332	31
K1047	40	U2120-X	12	U5200-XL-41	31
K1190	40	U2145-RXL-CAPL	10	U5200-XL-41GB	31
K1350	18, 39	U2448-X	11	U5200-XL-75	31
K1350L	39	U2594-X	12	U5200-XL-75GB	31
K1539	18, 39	U2852-X	18	U5210-XL	31
K1540	18, 39	U2853-X	18	U5220-XL	31
K1540L	39	U2854-X	18	U5230-XL	31
K1541	18, 39	U2855-X	18	U5268-XLT-150	20
K2381	40	U2856-X	18	U5268-XLT-150-KK	20
K3082	39	U2862-X	18	U5268-XLT-200	20
K3083	39	U2863-X	18	U5268-XLT-200-KK	20
K3441	39	U2864-X	18	U5300-O	33
K3442	39	U2865-X	18	U5300-O-41	33
K3450	37	U2866-X	18	U5300-O-55	33
K3865	25, 40	U3800	5	U5300-O-552GR	33
K3866	40	U3801	5	U5300-O-75	33
K4709	38	U3830	5	U5310-O	33
K4709-02	38	U3860	5	U5320-O	33
K4709-02-3R	38	U3822-20GR	6	U5320-O-75	33
K4709-WS	38	U4363-X-QG-K3-K2	9	U5330-O	33
K4802	40	U4408-O	24	U5740-X-K3L-K2L-CAPL	11
K4977-INT	39	U4410-O	24	U7040-XL-TG	7
K5022-INT	39	U4532-XL	8	U7040-XL-TG-5T	7
K5035	37	U4551-RXL-5T9	10	U7487-RL-TG-5T	7
K5039	37	U4664-X-8507	14	U7487-RL-QG-CAPL	7
K5193	37	U4667-XT-BAR-9572	15	UA4667-XT-9504	15
K5194	37	U4701-RXL	10	UAP5024-XL	21
K5400-1450	27	U4881-O	6	UC7442-RL	22
K5400-1450GB	35	U4881-O-50GB	6	UC7444-RL	22
K5400-520-GB	27	U4881-O-60GB	6	UC7445-RL	22
K5400-520GR	27	U4908-O	35	UC7446-RL	22
K5400-520GR	35	U4908-O-11GR	35	UC7448-RL	22
K5400-620	35	U4908-O-55GBGR	35	UC7449-RL	22
K5400-620GB	35	U4909-O	35	UC7450-RL	22
K5400-BRIDGE-1POS	37	U4909-O-11GR	35	UC7460-RL	22
K5400-BRIDGE-2POS	37	U4909-O-55GBGR	35	UC7461-RL	22
K5400-TT30	27	U5000-XL	27	UC7478-RL	22
K5400-TT30GB	27	U5000-XL-332	27	UC7532-RL	22
K5415	37	U5000-XL-41	27	UC7636-RL	22
K5T	37, 40	U5000-XL-55	27	Z703916-AC	16
K8180	40	U5000-XL-75	27	Z703918-AC	16
M5-144	40	U5000-XL-75GB	27	Z703919-AC	16
P-10	38	U5100-XL	29	Z703921-AC	16
P-10GR	38	U5100-XL-41	29	Z704693-AC	16
P-13	38	U5100-XL-41GB	29	Z704694-AC	16
P-23	38	U5100-XL-55	29	Z705420-AC	16
P-54	38	U5100-XL-552GR	29	Z705456-AC	16
Q2100H	20	U5100-XL-75	29	Z705545-AC	16
QN2150RH	20	U5100-XL-75	29	Z708124-AC	16
QN2200RH	20	U5100-XL-75GB	29	Z903917-AC	16
S8324	39	U5101-XL	29		

Other quality products available from Milbank

Commercial Pedestals

- Attractive • Easy to install
- Secure • Cost effective



Un-Strut Your Stuff...

816.483.5314 phone
816.483.6357 fax
www.milbankmfg.com
ComPed 04/05 (2-5K)



COMMERCIAL ENCLOSURES

2007 PRICE LIST

Effective June 26, 2006
Supersedes and cancels all previous Milbank lists.
All prices listed within are subject to change without notice.



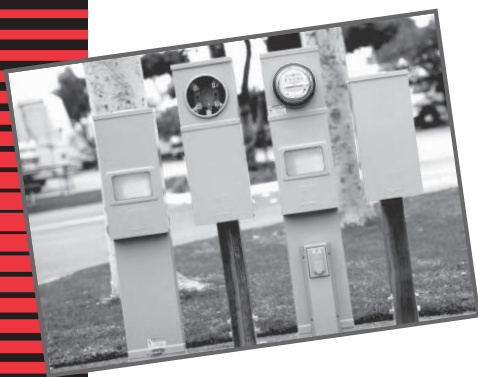
MILBANK MFG. CO. - ENCLOSURE GROUP
1601 South St. Louis Street
Concordia, MO 64020
Tel: 660-463-0805 Fax: 660-463-7950
Toll Free: 1-877-483-5314
www.milbankmfg.com



**Recreational Vehicle Park
Electrical Products & Accessories**

Millennium Series

INCLUDES REPLACEMENT PARTS



In addition to your local utility's meter mounting equipment, Milbank also manufactures supporting products, such as...

- Air Conditioner Disconnects**
- Hot Tub Disconnects**
- RV/Mobile Home Power Outlets**
- Terminal Boxes**
- Temporary Power Outlets**
- Commercial Pedestals**
- Commercial Enclosures**
- CT Enclosures**
- Circuit Breakers**
- Enclosed Circuit Breakers**
- Safety Switches**
- Test Switches**

**Contact your local distributor or go to
www.milbankmfg.com
to find additional product literature.**

Meter Mounting Equipment & More!

Commercial Electrical Enclosures

Residential & Commercial Metering

Commercial Meter Pedestals

Disconnect Devices

Current Transformer Enclosures

RV/MH Pedestals

Temporary Power Outlets

Circuit Breakers

Enclosed Circuit Breakers

Safety Switches

Test Switches



FOX-ROWDEN-MCBRAYER, INC.

1133 Pressley Rd.

Charlotte, NC 28217

Ph: 704-527-5110

Fax: 704-527-5514

MILBANK MFG. CO.

PO Box 419028

Kansas City, MO 64141-0028

Tel: 816-483-5314 Fax: 816-483-6357

Toll Free: 877-483-5314

www.milbankmfg.com

MILBANK®

80
YEARS
1927-2007



www.milbankmfg.com

N&SC 4/08 (1.5K)