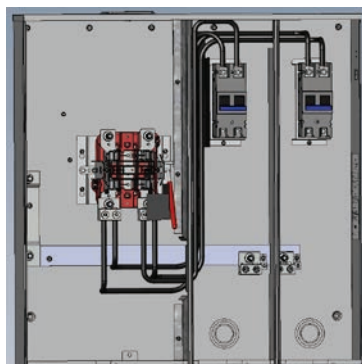
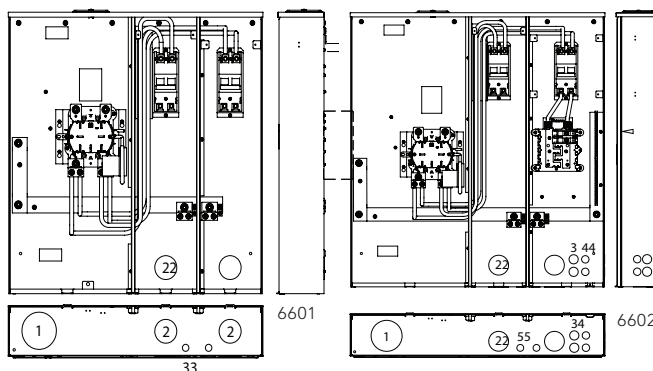


# National Grid Approved Meter Mains

UL-Listed | *NEC 2020 Compliant*



U6601-X-2/200



U5882-X

200 Amps per Position | 4 Terminals | Multi Position Meter Main | Horn Bypass | Ringless

Catalog Number	Amps	Positions	Service	Hub	Connectors CU/AL	Dimensions			Weight (lbs.)
					Line	D"	W"	H"	
U5882-X	200	2	OH/UG	C.P.	3/8" x 16 Studs	5 1/8	26 1/2	30	58
U5883-X	200	3	OH/UG	C.P.	3/8" x 16 Studs	5 1/8	34 5/8	30	88
U5884-X	200	4	OH/UG	C.P.	3/8" x 16 Studs	5 1/8	42 1/8	30	107
U5885-X	200	5	OH/UG	C.P.	3/8" x 16 Studs	5 1/8	51 1/20	30	128
U5886-X	200	6	OH/UG	C.P.	3/8" x 16 Studs	5 1/8	59 3/10	30	146

## Notes

- **NEC 2020 Compliant:** All products listed are NEC 2020 compliant.
- **Fifth terminal:** For field-installable Fifth terminal, order **K5T**.
- **Hub:** Units supplied with one closing plate. To order hubs separately, see accessories page.
- **Connectors:** Supplied with 3/8"-16 hex head nuts with Belleville washers. For connector lug kits, order from chart on page 76.
- **AIC Rating:** All models are rated 22K AIC.
- **Knockouts:** See next page for drawings and knockout configurations.
- **Horn Bypass:** Available, add **-KK** suffix
- **Optional:** Factory-installed breakers are available. Consult local Manufacturer's Rep for more information.

320 Amps | 4 Terminals | Ringless | Meter Main | 1Ø3W | Lever Bypass

Catalog Number	Material	Service	Hub	Connectors CU/AL - Line		Dimensions			Knockouts			
				Line	Load	D"	W"	H"	1	2	3	4
U6601-X-2/200	Steel	OH/UG	C.P.	3/8" x 16 Studs	CB	6	34 1/4	35	4	2 1/2	1/2	5/16

320 Amps | 4 Terminals | Ringless | Meter Main w/ Load Center | 1Ø3W | Lever Bypass

Catalog Number	Material	Service	Hub	Connectors CU/AL - Line		Dimensions			Knockouts				
				Line	Load	D"	W"	H"	1	2	3	4	5
U6602-X-2/200-MLK	Steel	OH/UG	C.P.	3/8" x 16 Studs	CB	6	38	41	4	2 1/2	3/4	1	1/2

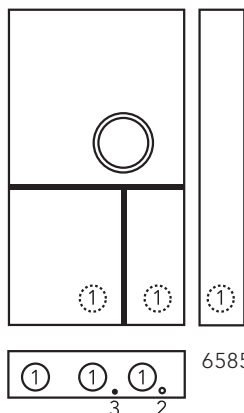
## Notes

- **Short Circuit Current Withstand Rating:** 22K AIC standard.
- **Breakers:** Units come with main breakers.
- **Fifth Terminal:** For field-mounted fifth terminal order catalog number K3865.
- **U6602** has 8 additional circuits.
- **-MLK:** Feed through lug kit factory installed.



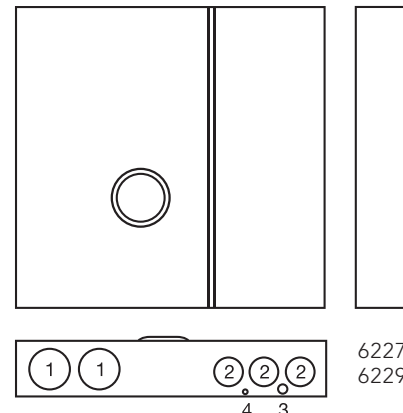
# National Grid Approved Meter Mains

UL-Listed | *NEC 2020 Compliant*



6585

U6585-X-2/200-K3L



6227  
6229

U6229-X-400-K7L

320 Amps | 4 Terminals | 2, 200 Amps Breakers | OH/UG Service | CP Hub | Lever Bypass | Ringless

Catalog Number	Terminals	Connectors CU/AL	Branch Circuits	Dimensions			Knockouts				
		Line		D"	W"	H"	1	2	3	4	5
U6585-X-2/200-K3L	4	(1) #4-600 or (2) 1/0-250kcmil	—	4 $\frac{7}{8}$	20 $\frac{1}{4}$	45	3	$\frac{1}{2}$	$\frac{1}{4}$	—	—

## Notes

- **Fifth terminal:** For field-installable fifth terminal, order catalog number **K3865**.
- **Breaker:** Come with two, 200 Amps main breakers.
- **\*For main lug feed-through kit order K3701.** For factory-installed, order catalog number with suffix **-MLK**.

400 Amps | 4 Terminals | Lever Bypass | 1Ø3W | 240V | **Ringless**

Catalog Number	Service	Hub	Connectors CU/AL	Dimensions			Knockouts			
			Line	D"	W"	H"	1	2	3	4
U6227-X-400-K3L	OH/UG	C.P.	(2) 1/0 - 250 or 4-600kcmil	6	36 $\frac{1}{4}$	34	4	2 $\frac{1}{2}$	$\frac{1}{2}$	$\frac{1}{4}$

## Notes

- **Short circuit current withstand rating:** **22K AIC**.
- **Bypass:** Lever supplies clamping action and operates bypass device.

400 Amps | 7 Terminals | Heavy Duty Lever Bypass | 480V | **Commercial**

Catalog Number	Amps	OH/UG	Phase	Breakers	Dimensions			Knockouts			
					D"	W"	H"	1	2	3	4
U6229-X-400-K7L	320	OH/UG	3Ø4W	400A	6	36 $\frac{1}{4}$	34	4	2 $\frac{1}{2}$	$\frac{1}{2}$	$\frac{1}{4}$

## Notes

- **AIC rating:** 22K AIC at 240V; and 10K AIC at 480V.
- **Hubs:** For proper hub selection, see the hub suffix chart on the Accessories page.
- **Bypass:** The heavy duty lever-type bypass is factory-installed and permits changing and testing of the meter without interrupting customer service when lever is in the raised position.
- **300 Amps breaker:** Can be installed from the factory (upon request).