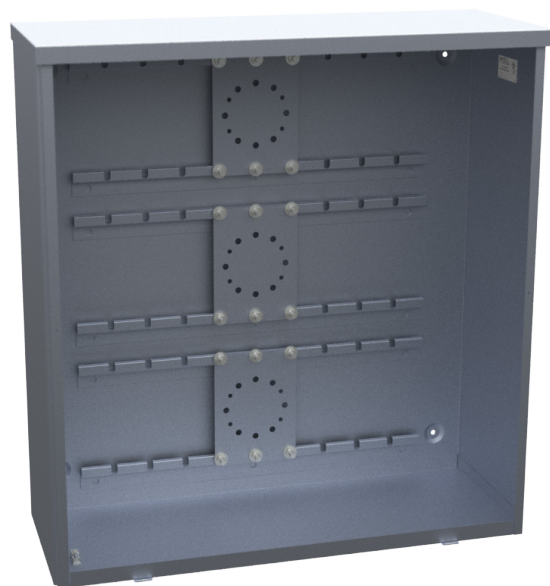




Duke Approved CT Cabinets

G90 Galvanized Steel or Aluminum



323412-SC3R-DUKE
323412-SC3RA-DUKE

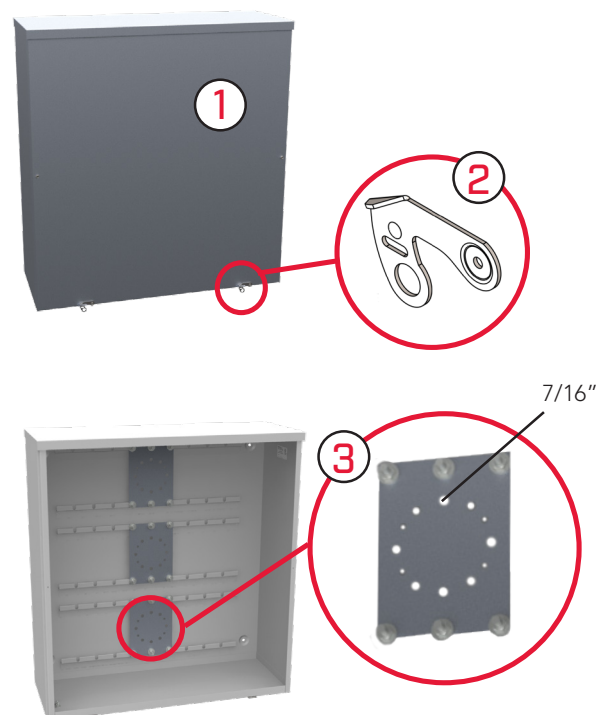


Image shows aluminum option

Features and Benefits

- ① **Galvanized Steel and Aluminum:** As with all Milbank products, our enclosures are constructed of G90 galvanized steel or aluminum and are NEMA 3R rated. Finished with an attractive, light gray, baked powder coating. Our state-of-the-art finish combines epoxy and polyester hybrid resins into a hybrid powder coating which is then electrostatically applied. This offers a durable, non-fading finish.
- ② **Lift-off Front Screw Cover:** With 2 sealing latches.
- ③ **Configurable CT Mounting Plates:** Removable plates can be positioned as need for the application.

Notes

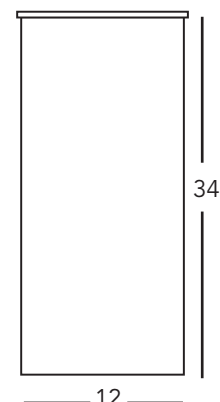
- Limits on amperage and/or conductor number and size apply. See Duke Energy region-specific service requirements manuals for more detail.

Not Approved For Use in Kentucky and Ohio

Catalog Number	Approving Utilities	Material	Dimensions		
			D"	W"	H"
323412-SC3R-DUKE	Duke	Steel	12	32	34
323412-SC3RA-DUKE	Duke	Aluminum	12	32	34

Approved For Use in Kentucky and Ohio

Catalog Number	Approving Utilities	Material	Dimensions		
			D"	W"	H"
323412-TC3R-DUKE	Duke	Steel	12	32	34
323412-TC3RA-DUKE	Duke	Aluminum	12	32	34



Please consult serving utility for their requirements prior to ordering or installing, as specifications and approvals vary by utility, and may require local electrical inspector approval. All installations must be installed by a licensed electrician and must comply with all national and local codes, laws and regulations. Milbank reserves the right to make changes in specifications and features shown without notice or obligation.





Duke Approved CT Cabinets

G90 Galvanized Steel or Aluminum

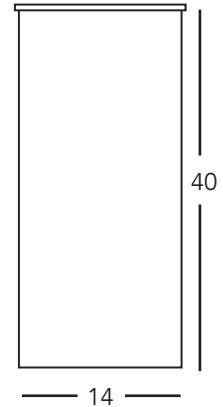


404014-CT3R-DUKE
404014-CT3RA-DUKE

Image shows aluminum option

Features and Benefits for the 404014

- Galvanized Steel and Aluminum:** As with all Milbank products, our enclosures are constructed of G90 galvanized steel or aluminum. Finished with an attractive, light gray, baked powder coating. Our state-of-the-art finish combines epoxy and polyester hybrid resins into a hybrid powder coating which is then electrostatically applied. This offers a durable, non-fading finish.
- Three-point Latching Handle & Locking Mechanism:** Padlocking handle with three-point latching system allows for easy locking and securing of the unit.
- Hinged Double Doors:** Hinged overlapping double doors enhance ease of access and are secured with three-point latching system.
- Lift-off Front Cover**
- Encased Safety Channel Cover:** Barrier between cabling and the three-point latch slide.
- Grounding Stud:** Provision for grounding wire.
- Configurable CT Mounting Plates:** Removable plates can be positioned as need for the application.



Notes

- Limits on amperage and/or conductor number and size apply. See Duke Energy region-specific service requirements manuals for more detail.

Catalog Number	Approving Utilities	Material	Dimensions		
			D"	W"	H"
404014-CT3R-DUKE	Duke	Steel	14	40	40
404014-CT3RA-DUKE	Duke	Aluminum	14	40	40

Please consult serving utility for their requirements prior to ordering or installing, as specifications and approvals vary by utility, and may require local electrical inspector approval. All installations must be installed by a licensed electrician and must comply with all national and local codes, laws and regulations. Milbank reserves the right to make changes in specifications and features shown without notice or obligation.





Duke Approved CT Cabinets

Underground Service Entry | Top Exit



Current Transformer Cabinets | Underground Service Entry | Top Exit

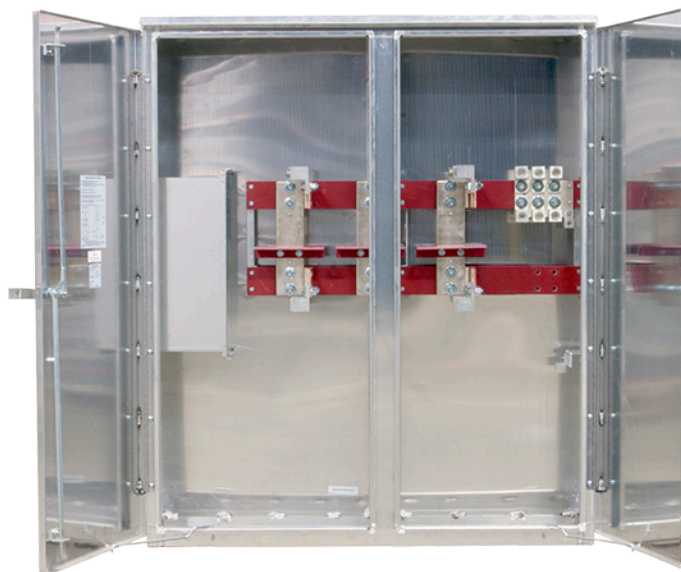
Catalog Number	Amps	VAC	Phase	Lugs/Phase	Dimensions		
					H"	W"	D"
DUKEM-813	800	600	1Ø-3W	3	42	24	8
DUKEM-833	800	600	3Ø-3W	3	42	24	8
DUKEM-834	800	600	3Ø-4W	3	42	24	8
DUKEM-1233	1200	600	3Ø-3W	4	48	36	15
DUKEM-1234	1200	600	3Ø-4W	4	48	36	15
DUKEM-1633	1600	600	3Ø-3W	5	60	38	16
DUKEM-1634	1600	600	3Ø-4W	5	60	38	16
DUKEM-2033	2000	600	3Ø-3W	6	66	42	15
DUKEM-2034	2000	600	3Ø-4W	6	66	42	15
DUKEM-2533	2500	600	3Ø-3W	7	72	42	21
DUKEM-2534	2500	600	3Ø-4W	7	72	42	21
DUKEM-3033	3000	600	3Ø-3W	8	72	42	21
DUKEM-3034	3000	600	3Ø-4W	8	72	42	21

Please consult serving utility for their requirements prior to ordering or installing, as specifications and approvals vary by utility, and may require local electrical inspector approval. All installations must be installed by a licensed electrician and must comply with all national and local codes, laws and regulations. Milbank reserves the right to make changes in specifications and features shown without notice or obligation.



Duke Approved CT Cabinets

Underground Service Entry | Bottom Exit



Current Transformer Cabinets | Underground Service Entry | Bottom Exit

Catalog Number	Amps	VAC	Phase	Lugs/Phase	Dimensions		
					H"	W"	D"
DUKEM-813UGBX	800	600	1Ø-3W	3	48	36	15
DUKEM-833UGBX	800	600	3Ø-3W	3	48	36	15
DUKEM-834UGBX	800	600	3Ø-4W	3	48	36	15
DUKEM-1233UGBX	1200	600	3Ø-3W	4	54	46	15
DUKEM-1234UGBX	1200	600	3Ø-4W	4	54	46	15
DUKEM-1633UGBX	1600	600	3Ø-3W	5	66	54	15
DUKEM-1634UGBX	1600	600	3Ø-4W	5	66	54	15
DUKEM-2033UGBX	2000	600	3Ø-3W	6	66	54	15
DUKEM-2034UGBX	2000	600	3Ø-4W	6	66	54	15
DUKEM-2533UGBX	2500	600	3Ø-3W	7	72	50	21
DUKEM-2534UGBX	2500	600	3Ø-4W	7	72	50	21
DUKEM-3033UGBX	3000	600	3Ø-3W	8	72	50	21
DUKEM-3034UGBX	3000	600	3Ø-4W	8	72	50	21

Please consult serving utility for their requirements prior to ordering or installing, as specifications and approvals vary by utility, and may require local electrical inspector approval. All installations must be installed by a licensed electrician and must comply with all national and local codes, laws and regulations. Milbank reserves the right to make changes in specifications and features shown without notice or obligation.





Duke Approved CT Cabinets

Pad Mounted | Underground Service Entry | Bottom Exit



Current Transformer Cabinets | Pad Mounting | Underground Service Entry | Bottom Exit

Catalog Number	Amps	VAC	Phase	Lugs/Phase	Dimensions		
					H"	W"	D"
DUKEM-813PM	800	600	1Ø-3W	3	58	36	15
DUKEM-833PM	800	600	3Ø-3W	3	58	36	15
DUKEM-834PM	800	600	3Ø-4W	3	58	36	15
DUKEM-1233PM	1200	600	3Ø-3W	4	64	46	15
DUKEM-1234PM	1200	600	3Ø-4W	4	64	46	15
DUKEM-1633PM	1600	600	3Ø-3W	5	66	54	15
DUKEM-1634PM	1600	600	3Ø-4W	5	66	54	15
DUKEM-2033PM	2000	600	3Ø-3W	6	66	54	15
DUKEM-2034PM	2000	600	3Ø-4W	6	66	54	15
DUKEM-2533PM	2500	600	3Ø-3W	7	72	50	21
DUKEM-2534PM	2500	600	3Ø-4W	7	72	50	21
DUKEM-3033PM	3000	600	3Ø-3W	8	72	50	21
DUKEM-3034PM	3000	600	3Ø-4W	8	72	50	21

Please consult serving utility for their requirements prior to ordering or installing, as specifications and approvals vary by utility, and may require local electrical inspector approval. All installations must be installed by a licensed electrician and must comply with all national and local codes, laws and regulations. Milbank reserves the right to make changes in specifications and features shown without notice or obligation.

