



Duke Approved CT Cabinets

G90 Galvanized Steel or Aluminum



323412-SC3R-DUKE
323412-SC3RA-DUKE

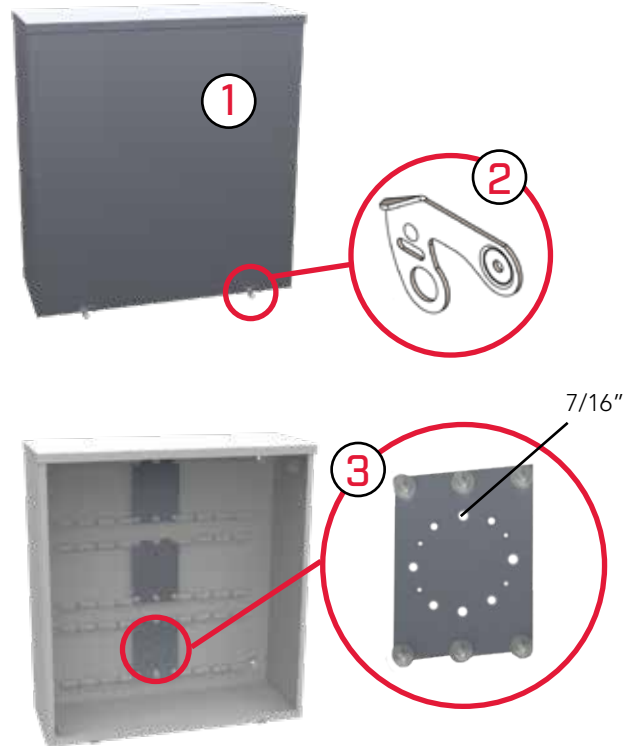


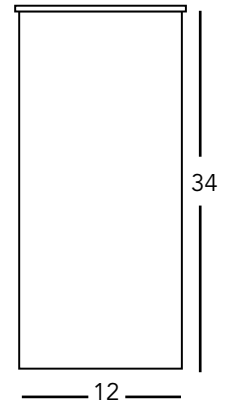
Image shows aluminum option

Features and Benefits

- 1 **Galvanized Steel and Aluminum:** As with all Milbank products, our enclosures are constructed of G90 galvanized steel or aluminum and are NEMA 3R rated. Finished with an attractive, light gray, baked powder coating. Our state-of-the-art finish combines epoxy and polyester hybrid resins into a hybrid powder coating which is then electrostatically applied. This offers a durable, non-fading finish.
- 2 **Lift-off Front Screw Cover:** With 2 sealing latches.
- 3 **Configurable CT Mounting Plates:** Removable plates can be positioned as need for the application.

Notes

- Limits on amperage and/or conductor number and size apply. See Duke Energy region-specific service requirements manuals for more detail.



Catalog Number	Approving Utilities	Material	Dimensions		
			D"	W"	H"
323412-SC3R-DUKE	Duke	Steel	12	32	34
323412-SC3RA-DUKE	Duke	Aluminum	12	32	34

Please consult serving utility for their requirements prior to ordering or installing, as specifications and approvals vary by utility, and may require local electrical inspector approval. All installations must be installed by a licensed electrician and must comply with all national and local codes, laws and regulations. Milbank reserves the right to make changes in specifications and features shown without notice or obligation.





Duke Approved CT Cabinets

G90 Galvanized Steel or Aluminum

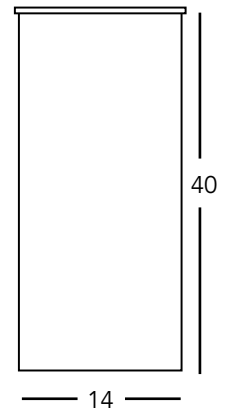


404014-CT3R-DUKE
404014-CT3RA-DUKE

Image shows aluminum option

Features and Benefits for the 404014

- 1 **Galvanized Steel and Aluminum:** As with all Milbank products, our enclosures are constructed of G90 galvanized steel or aluminum. Finished with an attractive, light gray, baked powder coating. Our state-of-the-art finish combines epoxy and polyester hybrid resins into a hybrid powder coating which is then electrostatically applied. This offers a durable, non-fading finish.
- 2 **Three-point Latching Handle & Locking Mechanism:** Padlocking handle with three-point latching system allows for easy locking and securing of the unit.
- 3 **Hinged Double Doors:** Hinged overlapping double doors enhance ease of access and are secured with three-point latching system.
- 4 **Lift-off Front Cover**
- 5 **Encased Safety Channel Cover:** Barrier between cabling and the three-point latch slide.
- 6 **Grounding Stud:** Provision for grounding wire.
- 7 **Configurable CT Mounting Plates:** Removable plates can be positioned as need for the application.



Notes

- Limits on amperage and/or conductor number and size apply. See Duke Energy region-specific service requirements manuals for more detail.

Catalog Number	Approving Utilities	Material	Dimensions		
			D"	W"	H"
404014-CT3R-DUKE	Duke	Steel	14	40	40
404014-CT3RA-DUKE	Duke	Aluminum	14	40	40

Please consult serving utility for their requirements prior to ordering or installing, as specifications and approvals vary by utility, and may require local electrical inspector approval. All installations must be installed by a licensed electrician and must comply with all national and local codes, laws and regulations. Milbank reserves the right to make changes in specifications and features shown without notice or obligation.

