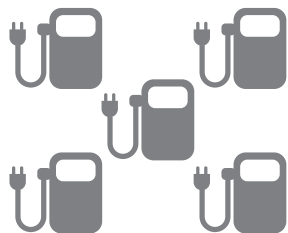


# CP3B - R Series



5 X Level 2 Dual-Port  
OR 2 x Level 3 Dual-Port  
EVSE Stations

## Features

- 200 - 400 Amps
- 22K AIC Standard
- Back-fed Main Breaker
- Sub-feed Lugs
- 480V for DCFC Applications
- 120/240V 103W through 277/480V 304W ratings

## Available in:

48" and 60" Heights  
24" and 32" Widths

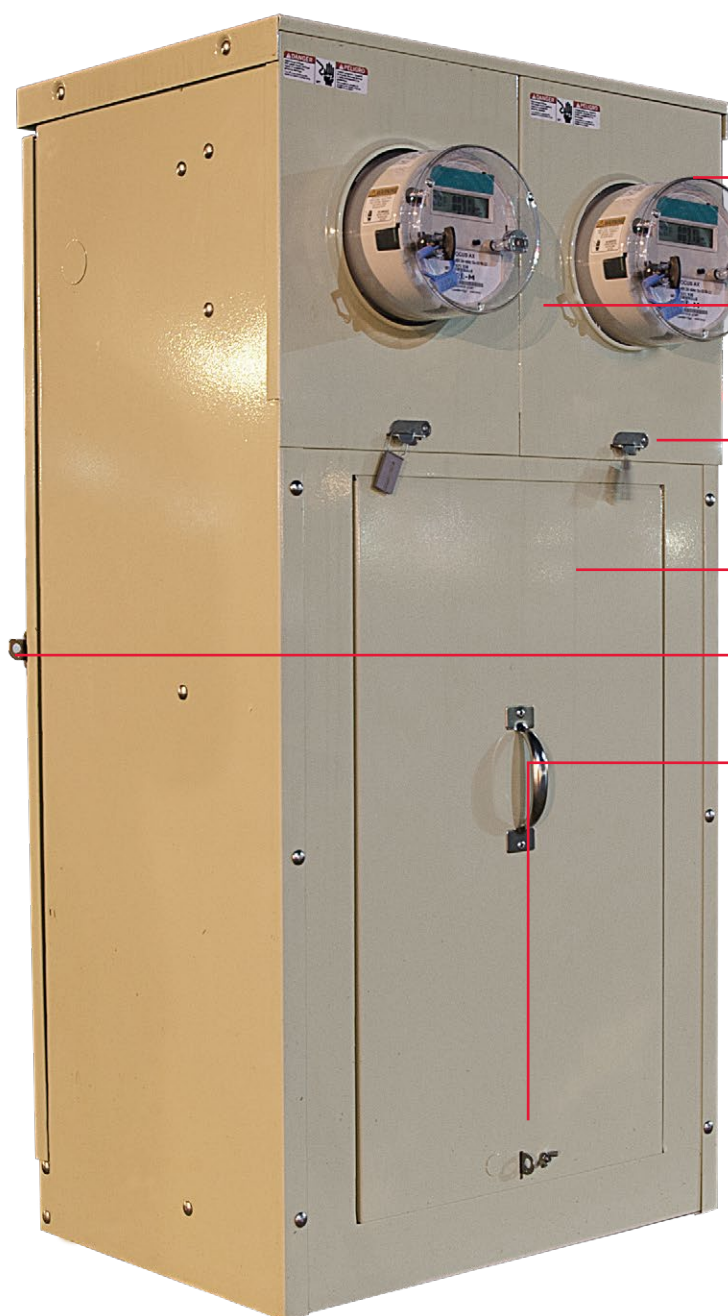
## Suitable for:

### Level 2

208V or 240V  
1-Phase AC  
12-80 Amps (Typ. 32)

### Level 3

480V  
10 and 3-Phase AC  
100-200 Amps



Utility Approved Meter  
Single, Dual, or  
Non-metered

Standardized colors  
available at no  
additional cost

Separate sealable &  
lockable metering  
section

350 MCM Lug Landings

Separate sealable &  
lockable utility  
section

Separate and Isolated  
Utility Termination  
Section

Milbank PD&C  
Cabinets are  
NEMA 3R Rated  
and UL Listed  
508A & 891

Contact your  
Local Milbank  
Rep today for  
Utility  
Approvals



## Save Valuable Labor Hours



**Pad Mount for Easy Installation!**  
Early shipment available upon request.



We are a PROUD American Manufacturer