



MILBANK
ENERGY AT WORK

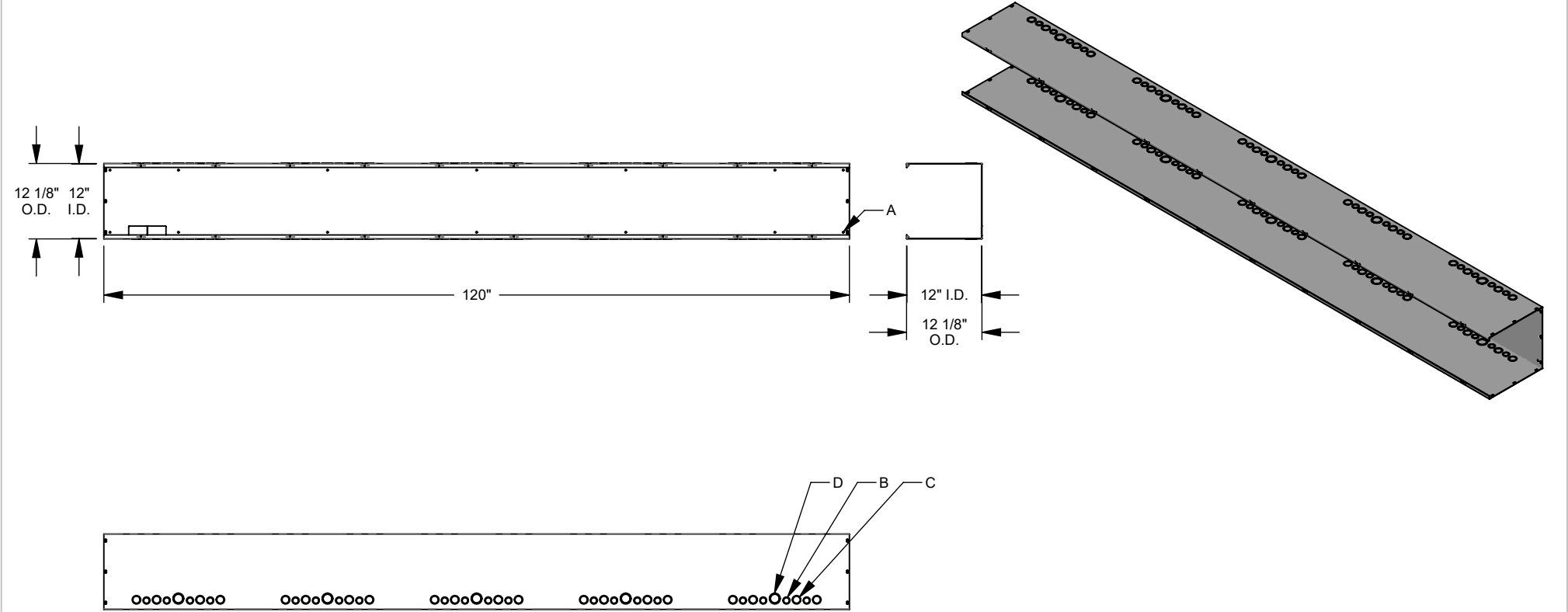
1212120-GSC1-NK-NP



Catalog Number	1212120-GSC1-NK-NP
Marketing Product Description	12x120x12 Screw Cover Wireway Type 1 UL Listed Steel No Knockouts No Paint
UPC	784572247079
Length (IN)	120
Width (IN)	12
Height (IN)	12
Weight (LB)	120
Brand Name	Milbank
Type	Lay In Wireway
Application	Wireway
Standard	UL Listed
Cover Type	Screw Cover
Enclosure	Indoor Enclosure
Nominal Cross Section	12x12
Straight Section Length	120
Material	G90 Galvanized Steel
Finish	Unpainted
Knockouts	False
NEMA Rating	Type 1

Please consult serving utility for their requirements prior to ordering or installing, as specifications and approvals vary by utility and may require local electrical inspector approval. All installations must be installed by a licensed electrician and must comply with all national and local codes, laws and regulations. Milbank reserves the right to make changes in specifications and features shown without notice or obligation.

FEATURE TABLE		
ITEM	QTY	DESCRIPTION
A	14	Ø.25 MOUNTING HOLE
B	40	½, ¾ CONC. K.O.
C	40	¾, 1 CONC. K.O.
D	10	1, 1¼ CONC. K.O.



Version:

1

**All dimensions are +/- 1/16".
Drawing views are not to scale.**

Please consult serving utility for their requirements prior to ordering or installing, as specifications and approvals vary by utility, and may require local electrical inspector approval. All installations must be installed by a licensed electrician and must comply with all national and local codes, laws and regulations. Milbank reserves the right to make changes in specifications and features shown without notice or obligation.