



**MILBANK**  
ENERGY AT WORK

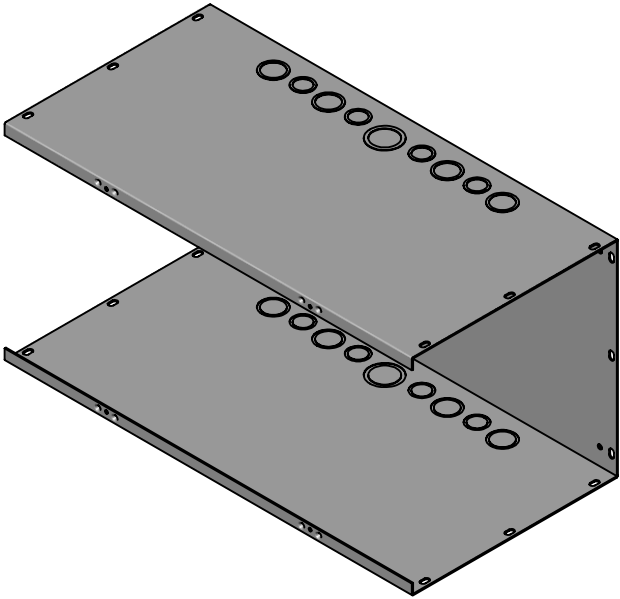
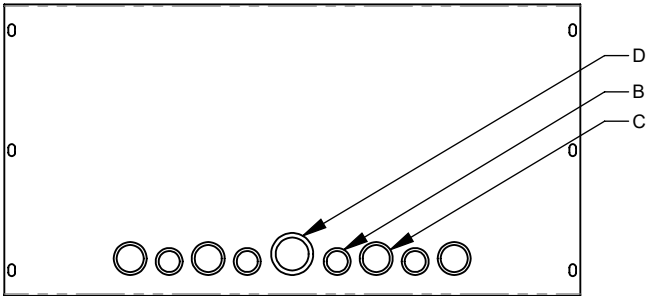
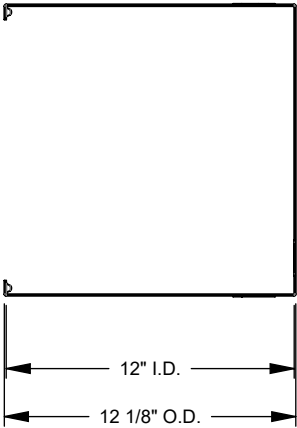
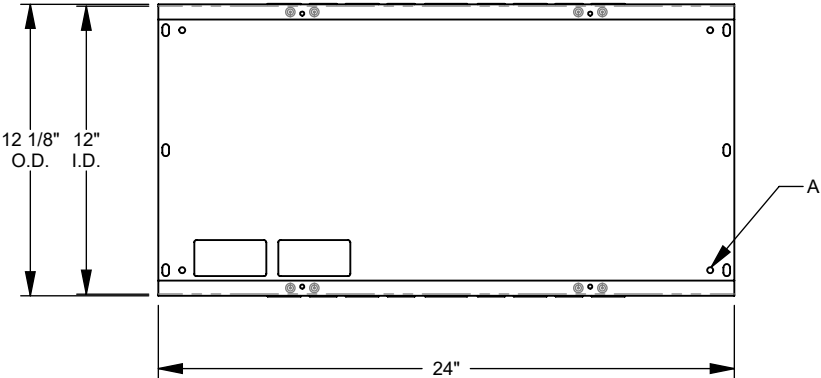
## 121224-GSC1-NK-NP



Catalog Number	121224-GSC1-NK-NP
Marketing Product Description	12x24X12 Screw Cover Wireway Type 1 UL Listed Steel No Knockouts No Paint
UPC	784572154636
Length (IN)	24
Width (IN)	12
Height (IN)	12
Weight (LB)	25
Brand Name	Milbank
Type	Lay In Wireway
Application	Wireway
Standard	UL Listed
Cover Type	Screw Cover
Enclosure	Indoor Enclosure
Nominal Cross Section	12x12
Straight Section Length	24
Material	G90 Galvanized Steel
Finish	Unpainted
Knockouts	False
NEMA Rating	Type 1

Please consult serving utility for their requirements prior to ordering or installing, as specifications and approvals vary by utility and may require local electrical inspector approval. All installations must be installed by a licensed electrician and must comply with all national and local codes, laws and regulations. Milbank reserves the right to make changes in specifications and features shown without notice or obligation.

FEATURE TABLE		
ITEM	QTY	DESCRIPTION
A	4	Ø.25 MOUNTING HOLE
B	8	½, ¾ CONC. K.O.
C	8	¾, 1 CONC. K.O.
D	2	1, 1¼ CONC. K.O.



**MILBANK**  
ENERGY AT WORK

Version:

**1**

**All dimensions are +/- 1/16".  
Drawing views are not to scale.**

Please consult serving utility for their requirements prior to ordering or installing, as specifications and approvals vary by utility, and may require local electrical inspector approval. All installations must be installed by a licensed electrician and must comply with all national and local codes, laws and regulations. Milbank reserves the right to make changes in specifications and features shown without notice or obligation.