



MILBANK
ENERGY AT WORK

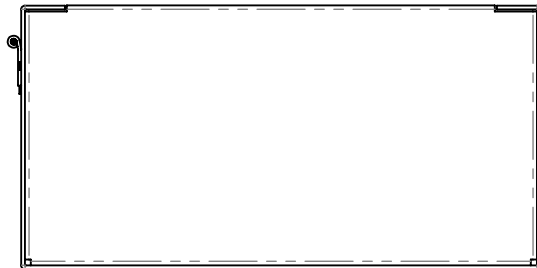
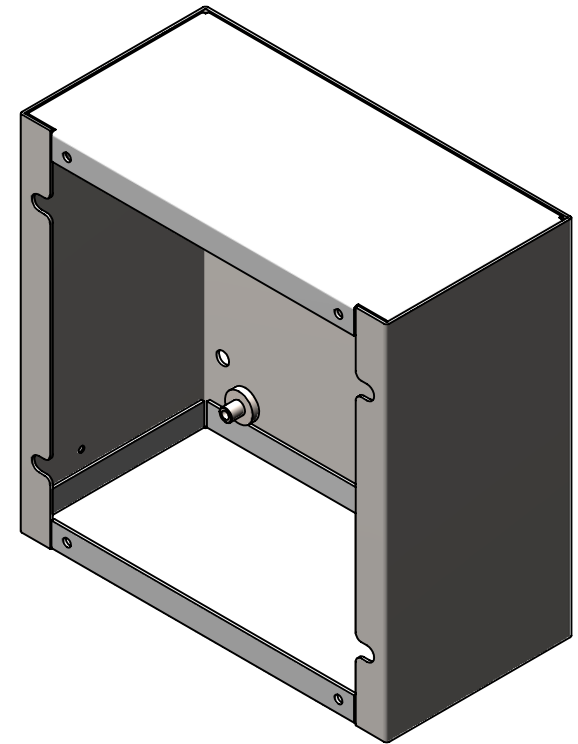
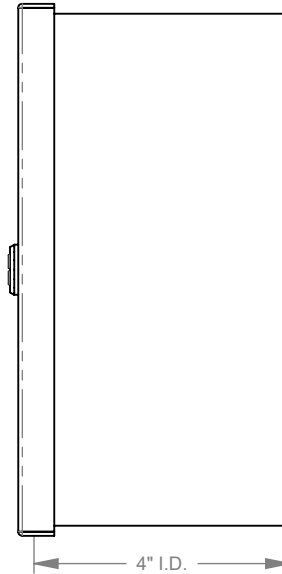
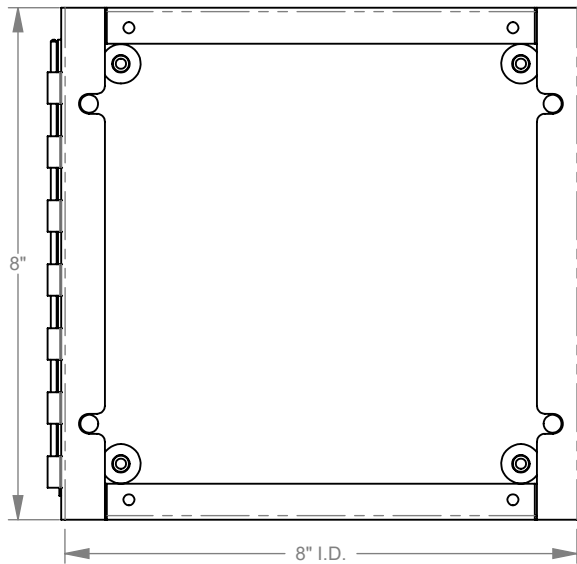
884-LC1



Catalog Number	884-LC1
Marketing Product Description	8x4X8 Hinge Cover Type 1 UL Listed Steel No Knockouts ANSI 61 Gray Continuous Hinge Slotted Quarter Turn Latch
UPC	784572189553
Length (IN)	4
Width (IN)	8
Height (IN)	8
Weight (LB)	4.2
Brand Name	Milbank
Type	Hinge Cover
Application	Enclosure for Mounting Electrical Equipment
Standard	UL Listed
Number Of Outlet	0
Material	Steel with Powder Coat Finish
Size	4L x 8W x 8H
Color	ANSI 61 Gray
Construction	Welded
Cable Entry	No Knockouts
Mounting	Wall Mount
NEMA Rating	Type 1
Hinge Type	Continuous Hinge

Top	Plain Top
Door	1 Door
Latch	Slotted Flush Mount Quarter Turn Latch
Support	Panel Supports

Please consult serving utility for their requirements prior to ordering or installing, as specifications and approvals vary by utility and may require local electrical inspector approval. All installations must be installed by a licensed electrician and must comply with all national and local codes, laws and regulations. Milbank reserves the right to make changes in specifications and features shown without notice or obligation.



MILBANK
ENERGY AT WORK

Version:

1

**All dimensions are +/- 1/16".
Drawing views are not to scale.**

Please consult serving utility for their requirements prior to ordering or installing, as specifications and approvals vary by utility, and may require local electrical inspector approval. All installations must be installed by a licensed electrician and must comply with all national and local codes, laws and regulations. Milbank reserves the right to make changes in specifications and features shown without notice or obligation.