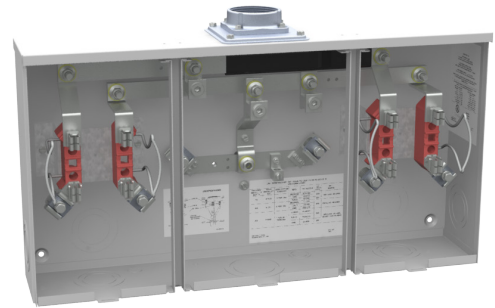




U1252-REL-K1



Catalog Number	U1252-REL-K1	Mounting	Surface Mount
Marketing Product Description	4 Terminal Ringless Large Hub Open Adapt To Small Hub Open 2.5 In Hub Included 2 Position Single Connector 6-350kcmil	Enclosure	G90 Galvanized Steel with Powder Coat Finish
UPC	784572133235	Jaw Quantity	4 Terminal
Length (IN)	5.125	Bypass Type	No Bypass
Width (IN)	26.5	Number of Meter Positions	2 Positions
Height (IN)	14	Equipment Ground	Ground Lug
Brand Name	Milbank	Hub Opening	Large Hub Opening Adapted to Small Hub Opening and 2 1/2 Inch Hub Included
Type	Ringless Meter Socket	Line Side Wire Range	6 AWG - 350 kcmil
Application	Meter Socket	Load Side Wire Range	6 AWG - 350 kcmil
Standard	UL Listed;Type 3R	Number Of Receptacles	0
Voltage Rating	300 Volts Alternating Current		
Amperage Rating	200 Continuous Ampere		
Phase	1 Phase		
Frequency Rating	60 Hertz		
Size	5.125L x 26.5W x14H		
Number Of Cutouts	0		
Cutout Size	No Main Breaker		
Cable Entry	Overhead or Underground with Center Wireway		
Terminal	Single Mechanical		
Insulation	Glass Polyester		

Please consult serving utility for their requirements prior to ordering or installing, as specifications and approvals vary by utility and may require local electrical inspector approval. All installations must be installed by a licensed electrician and must comply with all national and local codes, laws and regulations. Milbank reserves the right to make changes in specifications and features shown without notice or obligation.