



MILBANK
ENERGY AT WORK

S3970-XL



| | |
|-------------------------------|--------------------------------------------------------------|
| Catalog Number | S3970-XL |
| Marketing Product Description | 5 Terminal Ringless Stud Heavy Duty Lever Bypass Underground |
| UPC | 784572273771 |
| Length (IN) | 13 |
| Width (IN) | 4.844 |
| Height (IN) | 19 |
| Brand Name | Milbank |
| Type | Ringless Meter Socket |
| Application | Meter Socket |
| Standard | Non UL Listed;Type 3R |
| Voltage Rating | 600 Volts Alternating Current |
| Amperage Rating | 200 Continuous Ampere |
| Phase | 1 Phase |
| Frequency Rating | 60 Hertz |
| Size | 13L x 4.844W x 19H |
| Number Of Cutouts | 0 |
| Cutout Size | No Main Breaker |
| Cable Entry | Overhead or Underground |
| Terminal | 3/8 Inch Stud |
| Insulation | Glass Polyester |
| Mounting | Surface Mount |

| | |
|-----------|----------------------------------------------|
| Enclosure | G90 Galvanized Steel with Powder Coat Finish |
|-----------|----------------------------------------------|

| | |
|--------------|------------|
| Jaw Quantity | 5 Terminal |
|--------------|------------|

| | |
|-------------|--------------|
| Bypass Type | Lever Bypass |
|-------------|--------------|

| | |
|---------------------------|------------|
| Number of Meter Positions | 1 Position |
|---------------------------|------------|

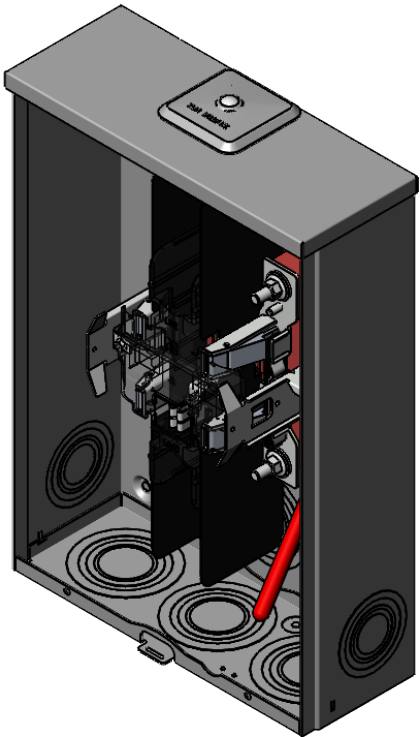
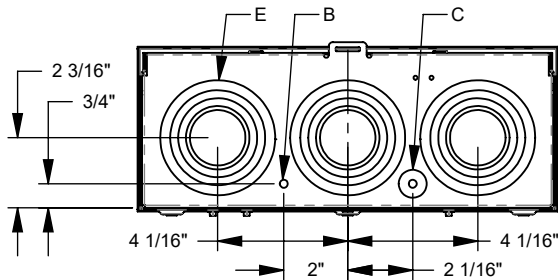
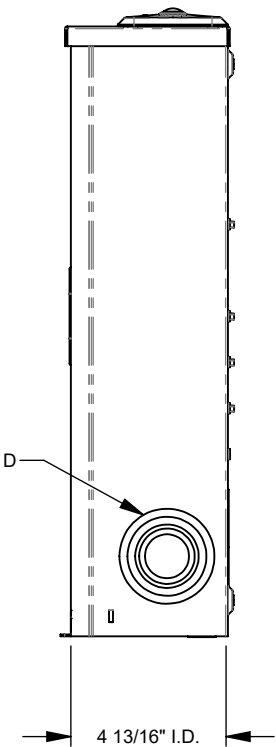
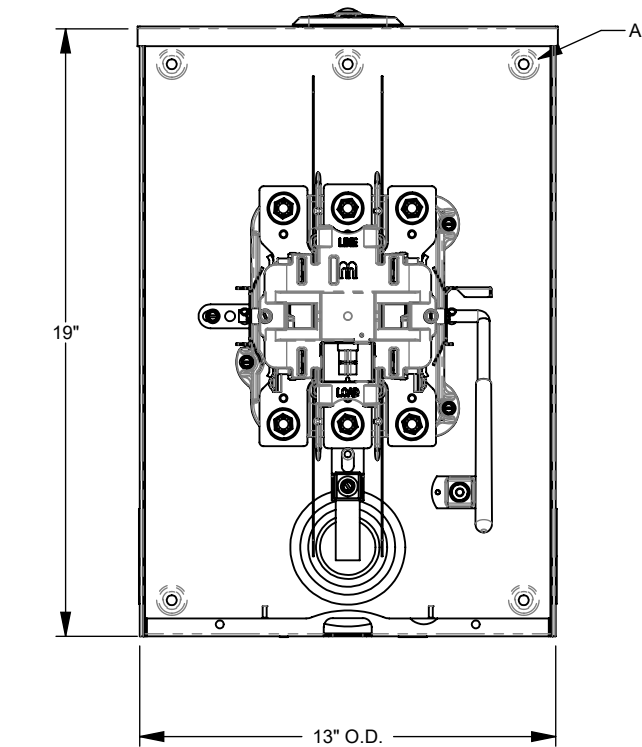
| | |
|------------------|---------------------|
| Equipment Ground | Bonded Ground Strap |
|------------------|---------------------|

| | |
|-------------|---------------------|
| Hub Opening | Small Closing Plate |
|-------------|---------------------|

| | |
|-----------------------|---|
| Number Of Receptacles | 0 |
|-----------------------|---|

Please consult serving utility for their requirements prior to ordering or installing, as specifications and approvals vary by utility and may require local electrical inspector approval. All installations must be installed by a licensed electrician and must comply with all national and local codes, laws and regulations. Milbank reserves the right to make changes in specifications and features shown without notice or obligation.

| FEATURE TABLE | | |
|---------------|-----|-----------------------------|
| ITEM | QTY | DESCRIPTION |
| A | 6 | U/L MNTG.EMBOSS |
| B | 1 | ¼ SOLID K.O. |
| C | 1 | ¼, ½ CONC. K.O. |
| D | 2 | 1, 1¼, 1½, 2, 2½ CONC. K.O. |
| E | 4 | 1¼, 1½, 2, 2½, 3 CONC. K.O. |



Version:

1

**All dimensions are +/- 1/16".
Drawing views are not to scale.**

Please consult serving utility for their requirements prior to ordering or installing, as specifications and approvals vary by utility, and may require local electrical inspector approval. All installations must be installed by a licensed electrician and must comply with all national and local codes, laws and regulations. Milbank reserves the right to make changes in specifications and features shown without notice or obligation.