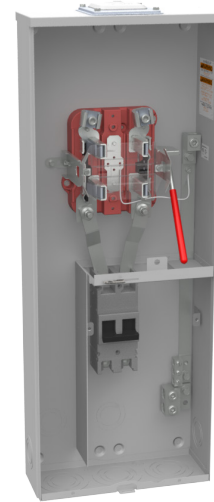




MILBANK
ENERGY AT WORK

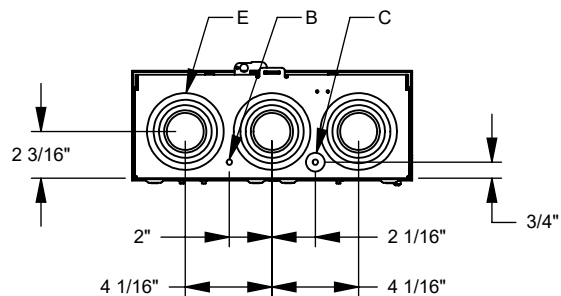
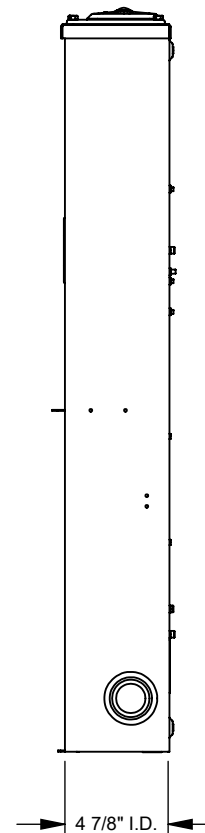
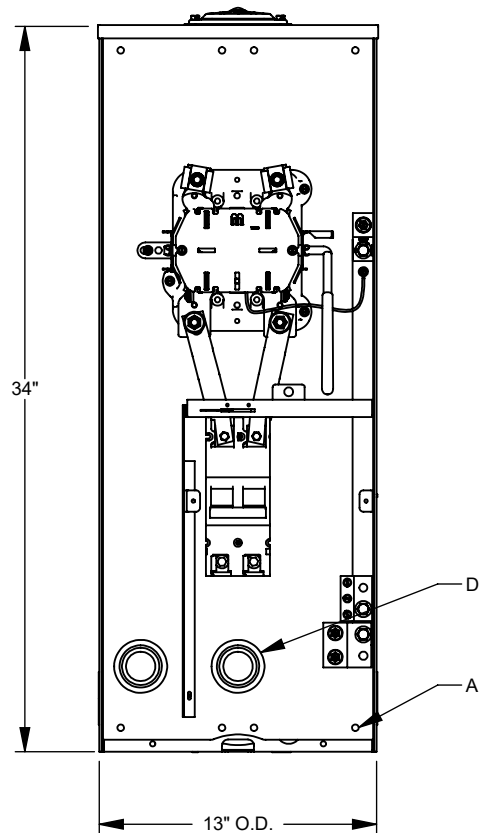
U3791N-RXL-200-BL



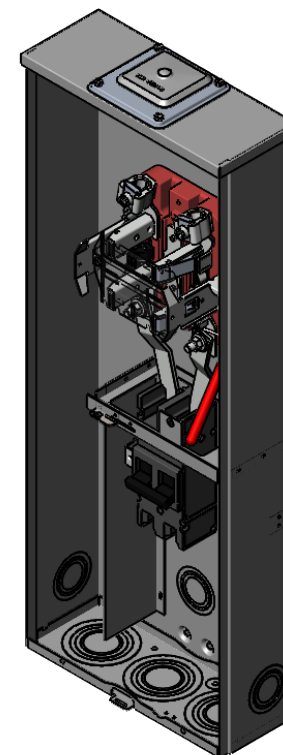
| | |
|-------------------------------|---|
| Catalog Number | U3791N-RXL-200-BL |
| Marketing Product Description | 4 Terminal Ringless Large Hub Open Adapt To Small Closing Plate Lever Bypass 1-200 Ampere Main Breaker 9-16 In Barrel Lock With Bracket Provision |
| UPC | 784572257122 |
| Length (IN) | 4.844 |
| Width (IN) | 13 |
| Height (IN) | 34 |
| Brand Name | Milbank |
| Type | Ringless Meter Socket |
| Application | Meter Socket With Main |
| Standard | UL Listed;Type 3R |
| Voltage Rating | Up to 240 Volts Alternating Current |
| Amperage Rating | 200 Continuous Ampere |
| Phase | 1 Phase |
| Frequency Rating | 60 Hertz |
| Size | 4.844L x 13W x 34H |
| Number Of Cutouts | 1 |
| Cutout Size | One 200 Ampere Main Breaker |
| Cable Entry | Overhead or Underground |
| Terminal | Lay in |

| | |
|---------------------------|--|
| Insulation | Glass Polyester |
| Mounting | Surface Mount |
| Enclosure | G90 Galvanized Steel with Powder Coat Finish |
| Jaw Quantity | 4 Terminal |
| Bypass Type | Lever Bypass |
| Number of Meter Positions | 1 Position |
| Equipment Ground | 3 Barrel Ground Lug |
| Hub Opening | Large Hub Opening Adapted to Small Closing Plate |
| Line Side Wire Range | 6 AWG - 350 kcmil |
| Load Side Wire Range | 1 AWG - 300 kcmil |
| Barrel Lock Provision | 9/16 Inch Knockout and Angle Bracket for Barrel Lock Provision |
| Number Of Receptacles | 0 |

Please consult serving utility for their requirements prior to ordering or installing, as specifications and approvals vary by utility and may require local electrical inspector approval. All installations must be installed by a licensed electrician and must comply with all national and local codes, laws and regulations. Milbank reserves the right to make changes in specifications and features shown without notice or obligation.



| FEATURE TABLE | | |
|---------------|-----|--------------------------------------|
| ITEM | QTY | DESCRIPTION |
| A | 8 | U/L MNTG.EMBOSS |
| B | 1 | 1/4 SOLID K.O. |
| C | 1 | 1/4, 1/2 CONC. K.O. |
| D | 4 | 1 1/4, 1 1/2, 2, 2 1/2 CONC. K.O. |
| E | 3 | 1 1/4, 1 1/2, 2, 2 1/2, 3 CONC. K.O. |



MILBANK
ENERGY AT WORK

Version:

1

**All dimensions are +/- 1/16".
Drawing views are not to scale.**

Please consult serving utility for their requirements prior to ordering or installing, as specifications and approvals vary by utility, and may require local electrical inspector approval. All installations must be installed by a licensed electrician and must comply with all national and local codes, laws and regulations. Milbank reserves the right to make changes in specifications and features shown without notice or obligation.