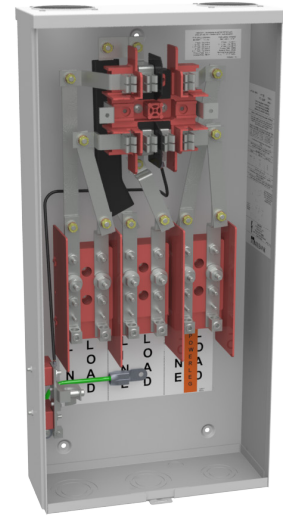




**MILBANK**  
ENERGY AT WORK

# 117TB

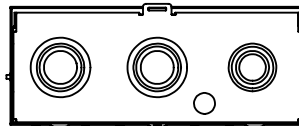
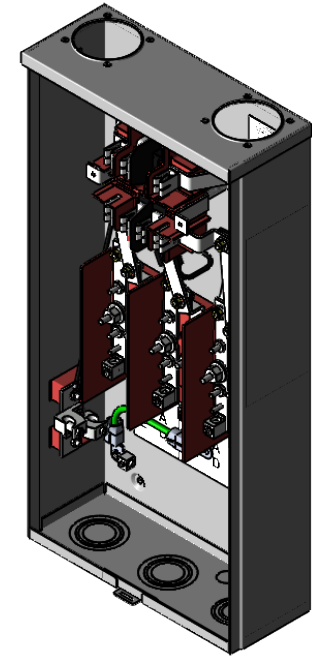
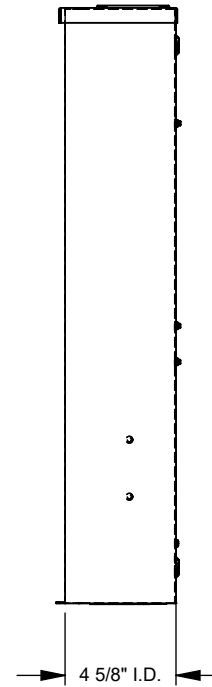
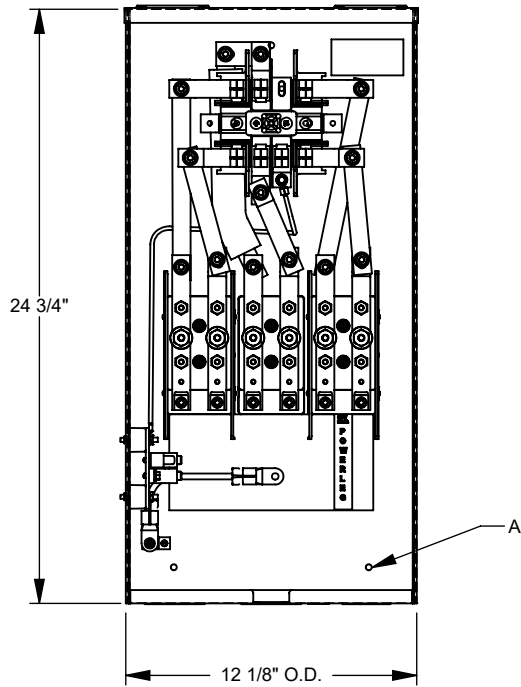


|                               |   |
|-------------------------------|---|
| Catalog Number                | 117TB   |
| Marketing Product Description | 7 Terminal Ring Type 2 Small Closing Plate Link Bypass 100 Ampere |
| UPC                           | 784572100961  |
| Length (IN)                   | 4.62  |
| Width (IN)                    | 12.125  |
| Height (IN)                   | 24.75   |
| Brand Name                    | Milbank   |
| Type                          | Ring Type Meter Socket  |
| Application                   | Meter Socket  |
| Standard                      | UL Listed;Type 3R   |
| Voltage Rating                | Up to 600 Volts Alternating Current                               |
| Amperage Rating               | 100 Continuous Ampere   |
| Phase                         | 3 Phase   |
| Frequency Rating              | 60 Hertz  |
| Size                          | 4.62L x 12.125W x 24.75H  |
| Number Of Cutouts             | 0   |
| Cutout Size                   | No Main Breaker   |
| Cable Entry                   | Overhead or Underground   |
| Terminal                      | Single Mechanical   |
| Insulation                    | Fiberglass with Resin   |
| Mounting                      | Surface Mount   |

|                           |  |
|---------------------------|--|
| Enclosure                 | G90 Galvanized Steel with Powder Coat Finish |
| Jaw Quantity              | 7 Terminal                                   |
| Bypass Type               | Link Bypass                                  |
| Number of Meter Positions | 1 Position                                   |
| Equipment Ground          | Ground Lug                                   |
| Hub Opening               | Twin Small Closing Plates                    |
| Line Side Wire Range      | 14 - 2/0 AWG                                 |
| Load Side Wire Range      | 14 - 2/0 AWG                                 |
| Number Of Receptacles     | 0  |

Please consult serving utility for their requirements prior to ordering or installing, as specifications and approvals vary by utility and may require local electrical inspector approval. All installations must be installed by a licensed electrician and must comply with all national and local codes, laws and regulations. Milbank reserves the right to make changes in specifications and features shown without notice or obligation.

| FEATURE TABLE |     |                   |
|---------------|-----|-------------------|
| ITEM          | QTY | DESCRIPTION       |
| A             | 3   | STD. MNTG. EMBOSS |



Version:

**1**

**All dimensions are +/- 1/16".  
Drawing views are not to scale.**

Please consult serving utility for their requirements prior to ordering or installing, as specifications and approvals vary by utility, and may require local electrical inspector approval. All installations must be installed by a licensed electrician and must comply with all national and local codes, laws and regulations. Milbank reserves the right to make changes in specifications and features shown without notice or obligation.