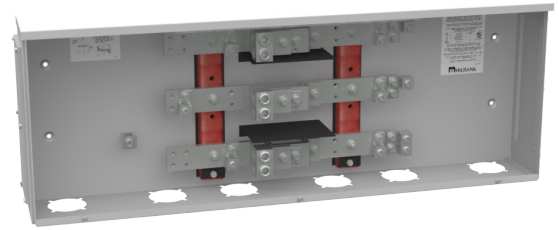




**MILBANK**<sup>®</sup>  
ENERGY AT WORK

## BC318



Catalog Number	BC318	Color	ANSI 61 Gray
Marketing Product Description	800 Ampere 1phase 600 Volt 43in-15in-6in Painted Steel Lift Off Screw Front 2 Lugs Per Landing - 4-600kcmil 4 Lugs Per Landing - 1/0-250kcmil 42k Ampere Interrupting Capacity	Connection	4 AWG to 600 kcmil Line Side Lugs and 6 AWG to 250 kcmil Load Side Lugs
UPC	784572111349	Construction	G90 Galvanized Steel
Length (IN)	6.188	Finish	Powder Coat Finish
Width (IN)	42.938	Number of Positions	3 Positions
Height (IN)	15.438	Number of Phases	1
Weight (LB)	65	Short Circuit Rating	42000 Ampere
Brand Name	Milbank		
Type	Line to Load Distribution		
Application	Bus Gutter		
Standard	UL Listed;Type 3R		
Number Of Conductors	1		
Conductor Material	Copper and Aluminum		
Size	6.188L x 42.938W x 15.438H		
Amperage Rating	Up to 800 Ampere		
Voltage Rating	Up to 600 Volts Alternating Current		
Temperature Rating	No Temperature Rating		
Insulation Material	Polypropylene		
Jacket Material	No Jacket Material		

Please consult serving utility for their requirements prior to ordering or installing, as specifications and approvals vary by utility and may require local electrical inspector approval. All installations must be installed by a licensed electrician and must comply with all national and local codes, laws and regulations. Milbank reserves the right to make changes in specifications and features shown without notice or obligation.