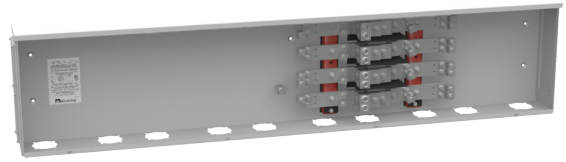




MILBANK[®]
ENERGY AT WORK

BC538



Catalog Number	BC538
Marketing Product Description	800 Ampere 3 Phase 600 Volt 71in-15in-6in Painted Steel Lift Off Screw Front 2 Lugs Per Landing - 4-600kcmil 4 Lugs Per Landing - 1/0-250kcmil 42k Ampere Interrupting Capacity
UPC	784572111462
Length (IN)	6.19
Width (IN)	71.56
Height (IN)	15.43
Weight (LB)	100
Brand Name	Milbank
Type	Line to Load Distribution
Application	Bus Gutter
Standard	UL Listed;Type 3R
Number Of Conductors	2
Conductor Material	Copper and Aluminum
Size	6.19L x 71.56W x 15.43H
Amperage Rating	Up to 800 Ampere
Voltage Rating	Up to 600 Volts Alternating Current
Temperature Rating	No Temperature Rating
Insulation Material	Polypropylene
Jacket Material	No Jacket Material

Color	ANSI 61 Gray
Connection	4 AWG to 600 kcmil Line Side Lugs and 6 AWG to 250 kcmil Load Side Lugs
Construction	G90 Galvanized Steel
Finish	Powder Coat Finish
Number of Positions	5 Positions
Number of Phases	3
Short Circuit Rating	42000 Ampere

Please consult serving utility for their requirements prior to ordering or installing, as specifications and approvals vary by utility and may require local electrical inspector approval. All installations must be installed by a licensed electrician and must comply with all national and local codes, laws and regulations. Milbank reserves the right to make changes in specifications and features shown without notice or obligation.