



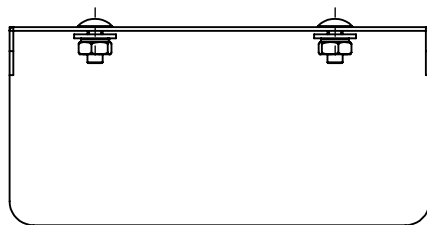
MILBANK
ENERGY AT WORK

K5415

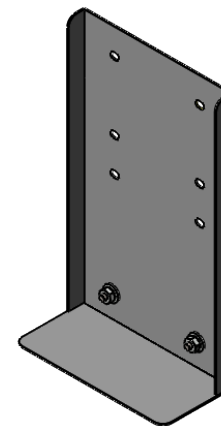
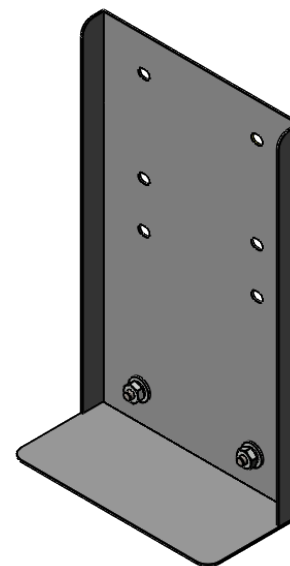
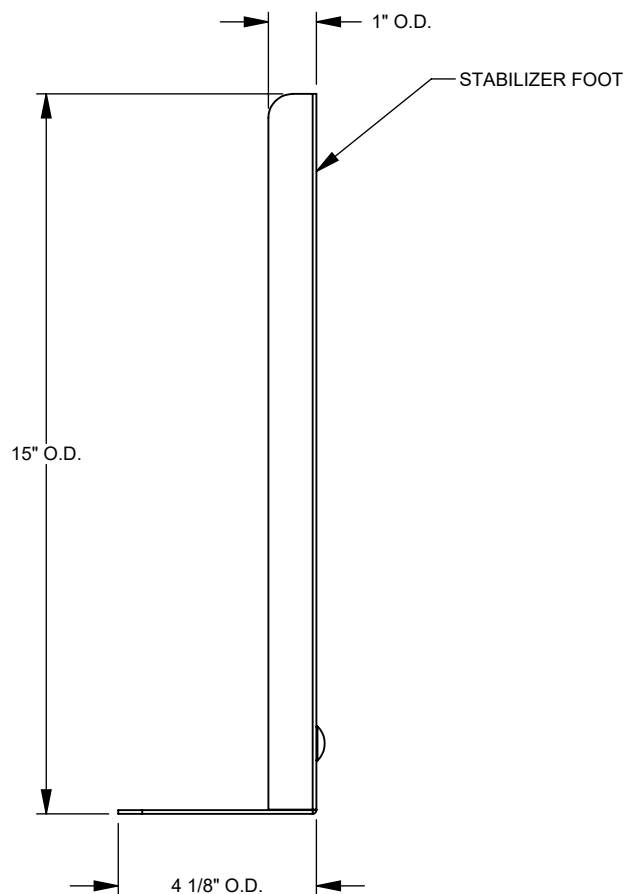
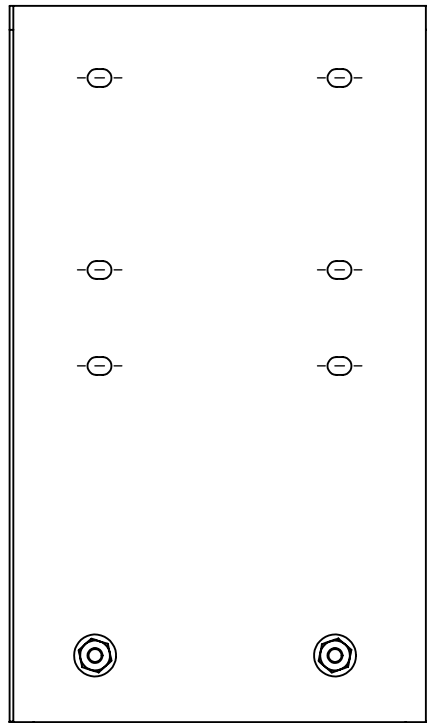


Catalog Number	K5415
Marketing Product Description	Stabilizer Foot Versace And Stabilizer Foot
UPC	784572259140
Length (IN)	8.75
Width (IN)	4.125
Height (IN)	15
Weight (LB)	4.2
Brand Name	Milbank
Type	Product Support
Application	RV or Mobile Home Accessory
Standard	UL Listed
Cover Type	No Cover
Enclosure	No Enclosure
Material	G90 Galvanized Steel
Finish	ANSI 61 Gray Powder Coat Finish
Consist Of	Fitting
Knockouts	False
NEMA Rating	No Rating

Please consult serving utility for their requirements prior to ordering or installing, as specifications and approvals vary by utility and may require local electrical inspector approval. All installations must be installed by a licensed electrician and must comply with all national and local codes, laws and regulations. Milbank reserves the right to make changes in specifications and features shown without notice or obligation.



8 3/4"



MILBANK
ENERGY AT WORK

Version:

1

**All dimensions are +/- 1/16".
Drawing views are not to scale.**

Please consult serving utility for their requirements prior to ordering or installing, as specifications and approvals vary by utility, and may require local electrical inspector approval. All installations must be installed by a licensed electrician and must comply with all national and local codes, laws and regulations. Milbank reserves the right to make changes in specifications and features shown without notice or obligation.