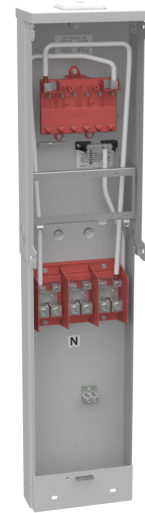




MILBANK
ENERGY AT WORK

U5210-XL



Catalog Number	U5210-XL
Marketing Product Description	Unmetered Small Closing Plate Single Pedestal Pad Mount
UPC	784572258273
Length (IN)	5.188
Width (IN)	8.656
Height (IN)	40.5
Brand Name	Milbank
Type	Unmetered Power Supply
Application	RV Power
Standard	UL Listed;Type 3R
Voltage Rating	Up to 240 Volts Alternating Current
Amperage Rating	200 Continuous Ampere
Phase	1 Phase
Frequency Rating	60 Hertz
Size	5.188L x 8.656W x 40.5H
Number Of Cutouts	0
Cutout Size	Breaker Provision
Cable Entry	Underground
Terminal	Double Mechanical
Insulation	Glass Polyester
Mounting	Pedestal

Enclosure	G90 Galvanized Steel with Powder Coat Finish
-----------	--

Jaw Quantity	0 Terminals
--------------	-------------

Bypass Type	No Bypass
-------------	-----------

Number of Meter Positions	Single Power Head
---------------------------	-------------------

Equipment Ground	2 Barrel Ground Lug and Ground Bar
------------------	------------------------------------

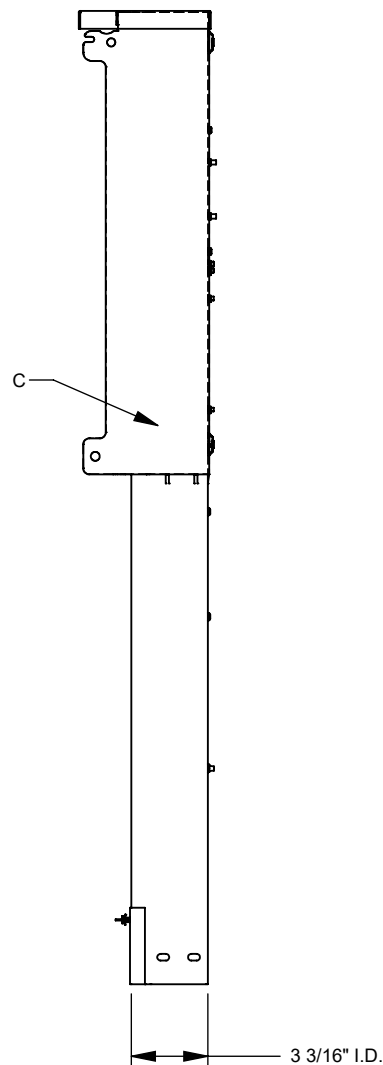
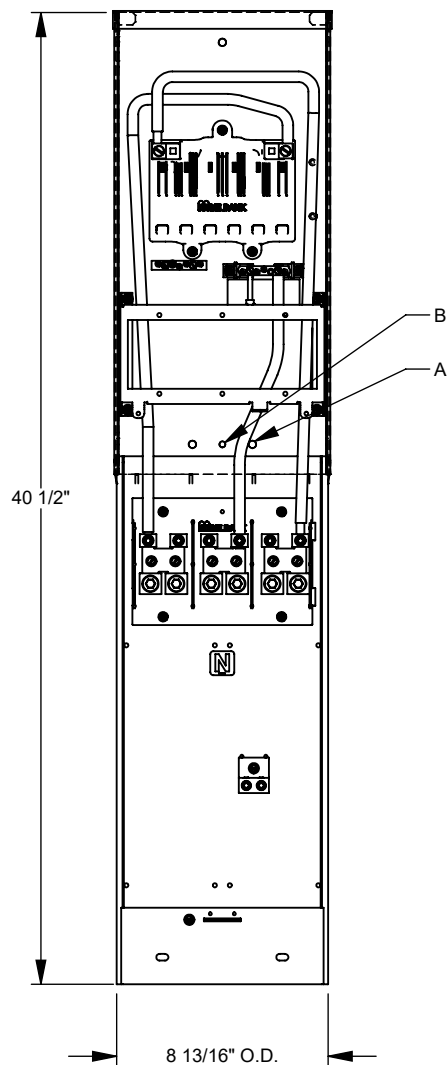
Hub Opening	Small Closing Plate
-------------	---------------------

Line Side Wire Range	6 AWG - 350 kcmil
----------------------	-------------------

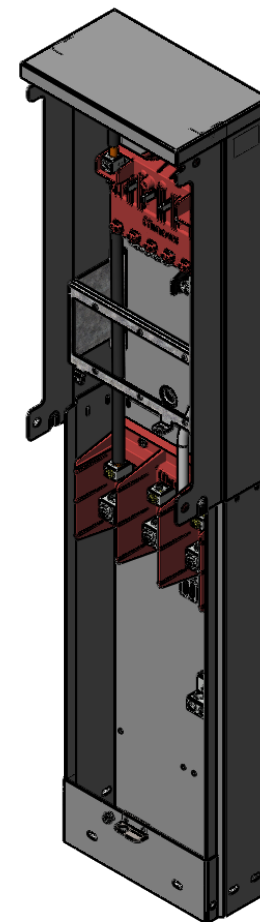
Number Branch Circuits	6
------------------------	---

Number Of Receptacles	0
-----------------------	---

Please consult serving utility for their requirements prior to ordering or installing, as specifications and approvals vary by utility and may require local electrical inspector approval. All installations must be installed by a licensed electrician and must comply with all national and local codes, laws and regulations. Milbank reserves the right to make changes in specifications and features shown without notice or obligation.



FEATURE TABLE		
ITEM	QTY	DESCRIPTION
A	3	U/L MNTG.EMBOSS
B	1	1 1/4 SOLID K.O.
C	2	1/4, 1/2, 3/4, 1, 1 1/4 CONC. K.O.



MILBANK
ENERGY AT WORK

Version:

1

**All dimensions are +/- 1/16".
Drawing views are not to scale.**

Please consult serving utility for their requirements prior to ordering or installing, as specifications and approvals vary by utility, and may require local electrical inspector approval. All installations must be installed by a licensed electrician and must comply with all national and local codes, laws and regulations. Milbank reserves the right to make changes in specifications and features shown without notice or obligation.