

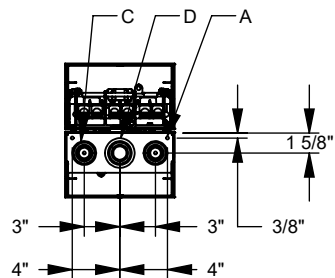
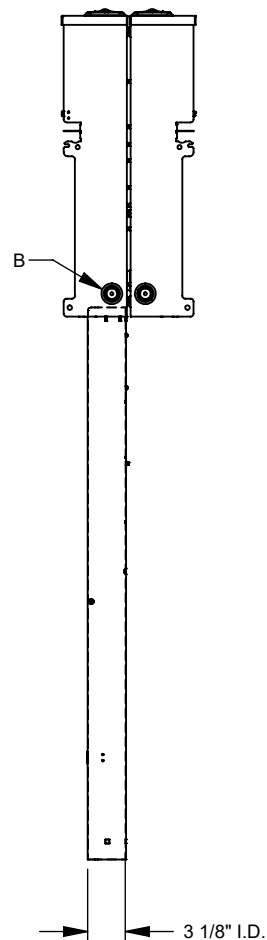
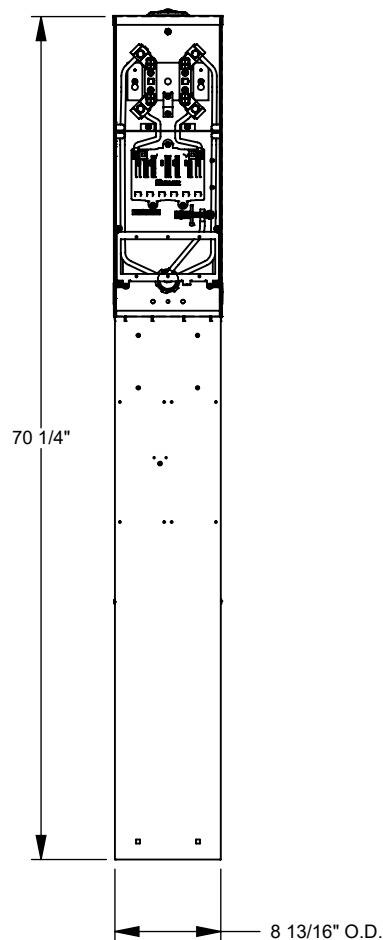
U5320-O-41



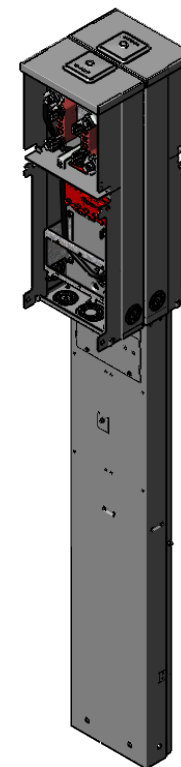
Catalog Number	U5320-O-41
Marketing Product Description	4 Terminal Ring Type Plain Top TT30 520GR Double Pedestal Direct Bury
UPC	784572279957
Length (IN)	11.188
Width (IN)	8.884
Height (IN)	70.25
Brand Name	Milbank
Type	Ring Type Meter Socket
Special Features	One Single Pole 20 Ampere Breaker and One Single Pole 30 Ampere Breaker
Application	RV Power
Standard	UL Listed;Type 3R
Voltage Rating	Up to 240 Volts Alternating Current
Amperage Rating	125 Continuous Ampere
Phase	1 Phase
Frequency Rating	60 Hertz
Size	11.188L x 8.884W x 70.25H
Number Of Cutouts	4
Cutout Size	Two Single Pole 20 Ampere Breakers and Two Single Pole 30 Ampere Breakers
Cable Entry	Underground

Terminal	Double Mechanical
Insulation	Glass Polyester
Mounting	Pedestal
Enclosure	G90 Galvanized Steel with Powder Coat Finish
Jaw Quantity	4 Terminal
Bypass Type	No Bypass
Number of Meter Positions	Double Power Head
Equipment Ground	2 Barrel Ground Lug and Ground Bar
Hub Opening	Plain Top
Line Side Wire Range	6 AWG - 350 kcmil
Number Branch Circuits	8
Number Of Receptacles	4
Receptacle Configuration	Two NEMA TT30 and Two NEMA 5-20 Ground Fault

Please consult serving utility for their requirements prior to ordering or installing, as specifications and approvals vary by utility and may require local electrical inspector approval. All installations must be installed by a licensed electrician and must comply with all national and local codes, laws and regulations. Milbank reserves the right to make changes in specifications and features shown without notice or obligation.



FEATURE TABLE		
ITEM	QTY	DESCRIPTION
A	2	1/4 SOLID K.O.
B	4	1/2, 3/4, 1, 1 1/4 CONC. K.O.
C	2	1/2, 3/4, 1, 1 1/4, 1 1/2 CONC. K.O.
D	1	3/4, 1, 1 1/4, 1 1/2, 2 CONC. K.O.



MILBANK
ENERGY AT WORK

Version:

1

**All dimensions are +/- 1/16".
Drawing views are not to scale.**

Please consult serving utility for their requirements prior to ordering or installing, as specifications and approvals vary by utility, and may require local electrical inspector approval. All installations must be installed by a licensed electrician and must comply with all national and local codes, laws and regulations. Milbank reserves the right to make changes in specifications and features shown without notice or obligation.