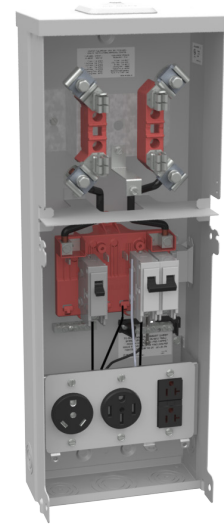




MILBANK
ENERGY AT WORK

U5100-XL-75-L

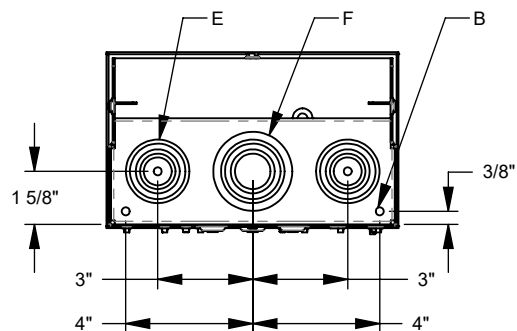
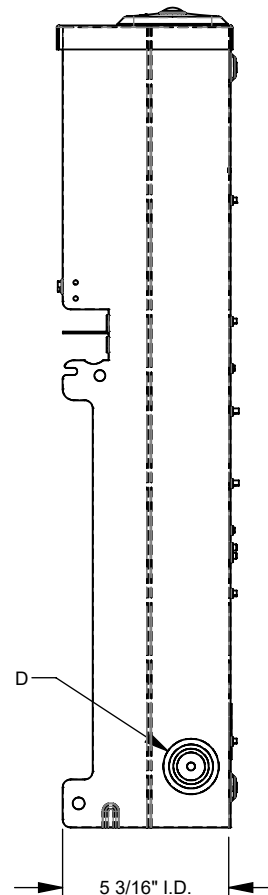
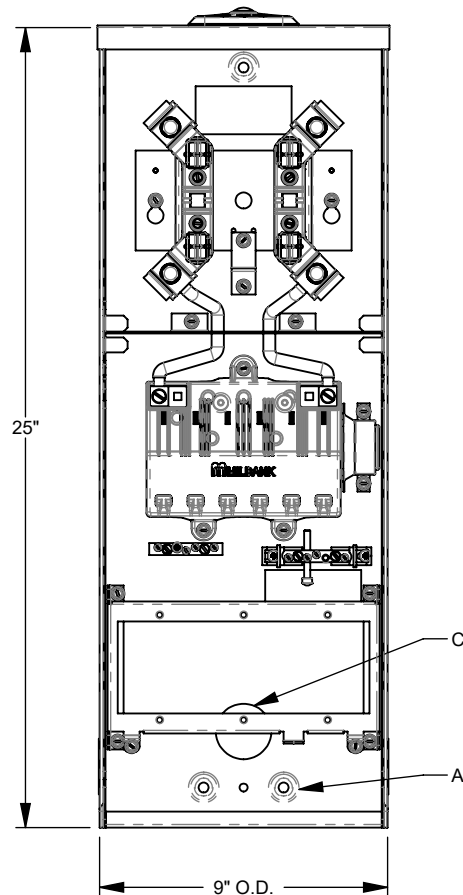


| | |
|-------------------------------|---|
| Catalog Number | U5100-XL-75-L |
| Marketing Product Description | 4 Terminal Ring Type Small Closing Plate TT30 1450 520GR Light Kit Surface Mount |
| UPC | 784572258136 |
| Length (IN) | 5.188 |
| Width (IN) | 8.875 |
| Height (IN) | 25 |
| Brand Name | Milbank |
| Type | Ring Type Meter Socket |
| Special Features | Single Pole 20 Ampere Breaker and Single Pole 30 Ampere Breaker and Double Pole 50 Ampere Breaker |
| Application | RV Power |
| Standard | UL Listed;Type 3R |
| Voltage Rating | Up to 240 Volts Alternating Current |
| Amperage Rating | 125 Continuous Ampere |
| Phase | 1 Phase |
| Frequency Rating | 60 Hertz |
| Size | 5.188L x 8.875W x 25H |
| Number Of Cutouts | 3 |

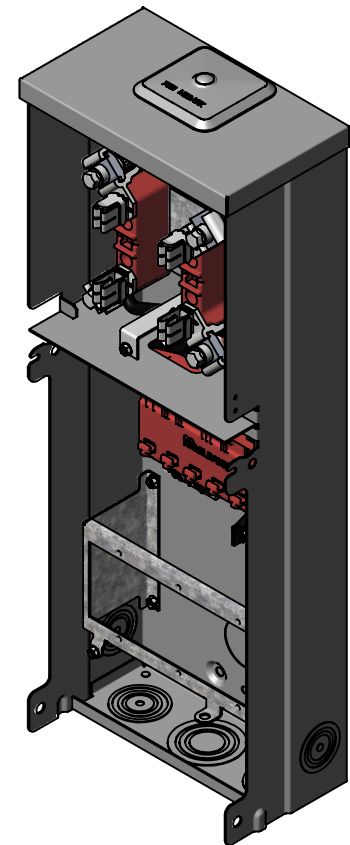
| | |
|-------------|---|
| Cutout Size | One Single Pole 20 Ampere Breaker and One Single Pole 30 Ampere Breaker and One Double Pole 50 Ampere Breaker |
|-------------|---|

| | |
|---------------------------|---|
| Cable Entry | Overhead or Underground |
| Terminal | Lay in |
| Insulation | Glass Polyester |
| Mounting | Surface Mount |
| Enclosure | G90 Galvanized Steel with Powder Coat Finish |
| Jaw Quantity | 4 Terminal |
| Bypass Type | No Bypass |
| Number of Meter Positions | Single Power Head |
| Equipment Ground | Ground Bar |
| Hub Opening | Small Closing Plate |
| Line Side Wire Range | 6 AWG - 350 kcmil |
| Number Branch Circuits | 2 |
| Number Of Receptacles | 3 |
| Receptacle Configuration | One NEMA 14-50 and One NEMA TT30 and One NEMA 5-20 Ground Fault |

Please consult serving utility for their requirements prior to ordering or installing, as specifications and approvals vary by utility and may require local electrical inspector approval. All installations must be installed by a licensed electrician and must comply with all national and local codes, laws and regulations. Milbank reserves the right to make changes in specifications and features shown without notice or obligation.



| FEATURE TABLE | | |
|---------------|-----|--------------------------------------|
| ITEM | QTY | DESCRIPTION |
| A | 3 | U/L MNTG.EMBOSS |
| B | 3 | 1/4 SOLID K.O. |
| C | 1 | 1 1/4 SOLID K.O. |
| D | 2 | 1/2, 3/4, 1, 1 1/4 CONC. K.O. |
| E | 2 | 1/2, 3/4, 1, 1 1/4, 1 1/2 CONC. K.O. |
| F | 1 | 3/4, 1, 1 1/4, 1 1/2, 2 CONC. K.O. |



MILBANK
ENERGY AT WORK

Version:

1

**All dimensions are +/- 1/16".
Drawing views are not to scale.**

Please consult serving utility for their requirements prior to ordering or installing, as specifications and approvals vary by utility, and may require local electrical inspector approval. All installations must be installed by a licensed electrician and must comply with all national and local codes, laws and regulations. Milbank reserves the right to make changes in specifications and features shown without notice or obligation.