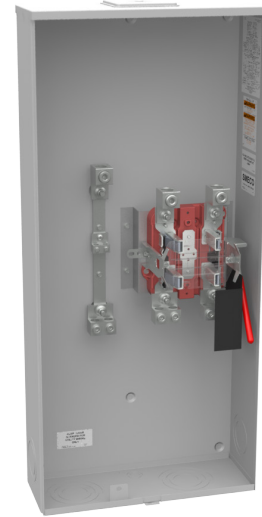




**MILBANK**  
ENERGY AT WORK

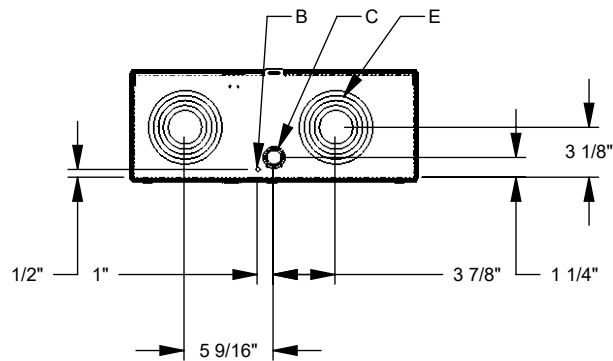
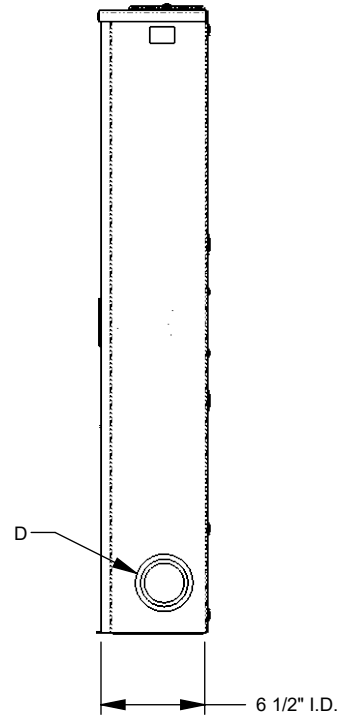
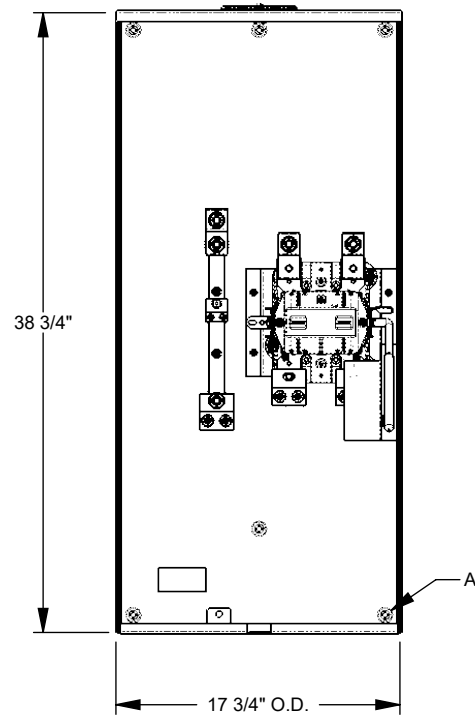
## U4778-X-K3-K2-SMECO



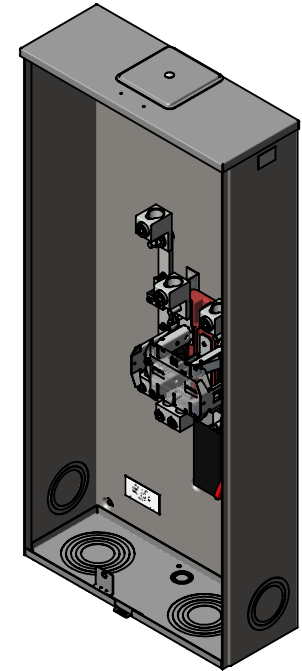
Catalog Number	U4778-X-K3-K2-SMECO
Marketing Product Description	4 Terminal Ringless Large Closing Plate Lever Bypass Single Connector Locking 4-600kcmil Double Connector Locking 6-350kcmil Southern Maryland Electric Coop
UPC	784572315808
Length (IN)	6.5
Width (IN)	17.75
Height (IN)	38.75
Brand Name	Milbank
Type	Ringless Meter Socket
Special Features	Southern Maryland Electric Coop
Application	Meter Socket
Standard	UL Listed;Type 3R
Voltage Rating	600 Volts Alternating Current
Amperage Rating	320 Continuous Ampere
Phase	1 Phase
Frequency Rating	60 Hertz
Size	6.5L x 17.75W x 38.75H
Number Of Cutouts	0
Cutout Size	No Main Breaker
Cable Entry	Overhead or Underground

Terminal	3/8 Inch Stud
Insulation	Glass Polyester
Mounting	Surface Mount
Enclosure	G90 Galvanized Steel with Powder Coat Finish
Jaw Quantity	4 Terminal
Bypass Type	Lever Bypass
Number of Meter Positions	1 Position
Equipment Ground	2 Barrel Ground Lug
Hub Opening	Large Closing Plate
Line Side Wire Range	4 AWG - 600 kcmil or Two 1/0 AWG - 250 kcmil
Load Side Wire Range	Two 6 AWG - 350 kcmil
Number Of Receptacles	0

Please consult serving utility for their requirements prior to ordering or installing, as specifications and approvals vary by utility and may require local electrical inspector approval. All installations must be installed by a licensed electrician and must comply with all national and local codes, laws and regulations. Milbank reserves the right to make changes in specifications and features shown without notice or obligation.



FEATURE TABLE		
ITEM	QTY	DESCRIPTION
A	6	U/L MNTG.EMBOSS
B	1	1/4 SOLID K.O.
C	1	1/2, 3/4, 1 CONC. K.O.
D	2	2, 2 1/2, 3 CONC. K.O.
E	2	2, 2 1/2, 3, 3 1/2, 4 CONC. K.O.



Version:

1

**All dimensions are +/- 1/16".  
Drawing views are not to scale.**

Please consult serving utility for their requirements prior to ordering or installing, as specifications and approvals vary by utility, and may require local electrical inspector approval. All installations must be installed by a licensed electrician and must comply with all national and local codes, laws and regulations. Milbank reserves the right to make changes in specifications and features shown without notice or obligation.