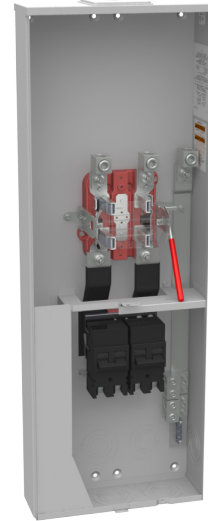




**MILBANK**  
ENERGY AT WORK

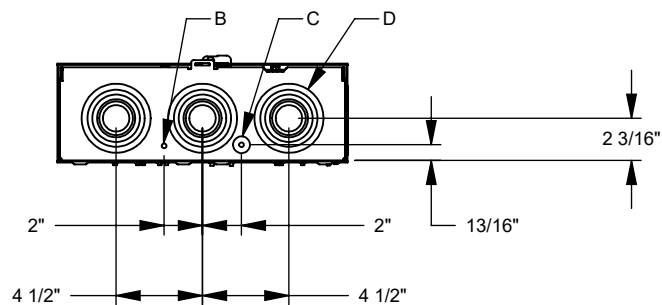
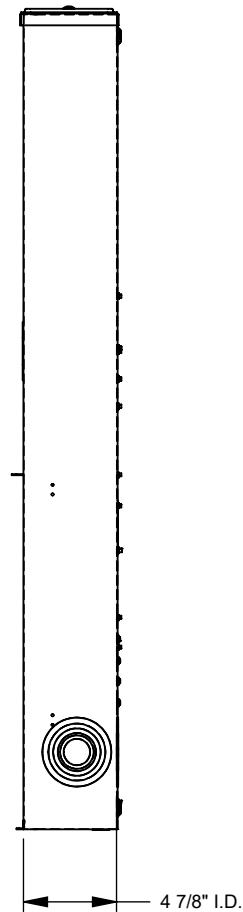
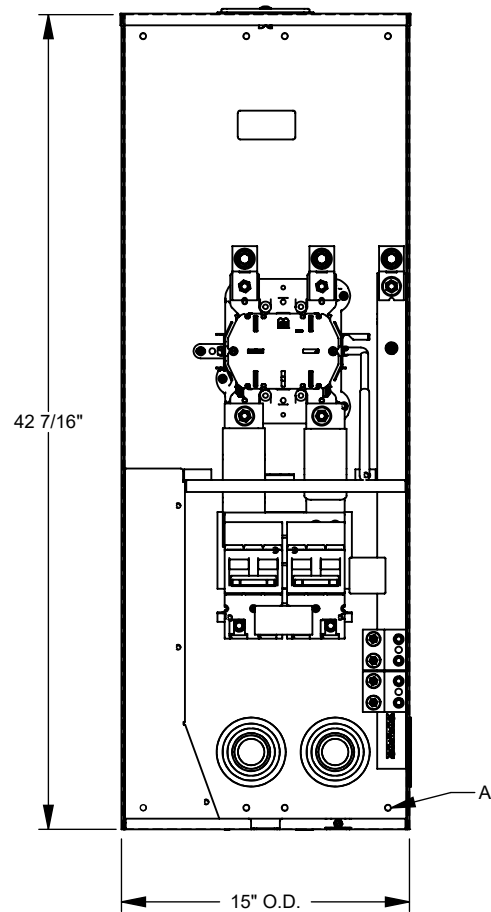
## U5059-X-2/200-K3L-IL



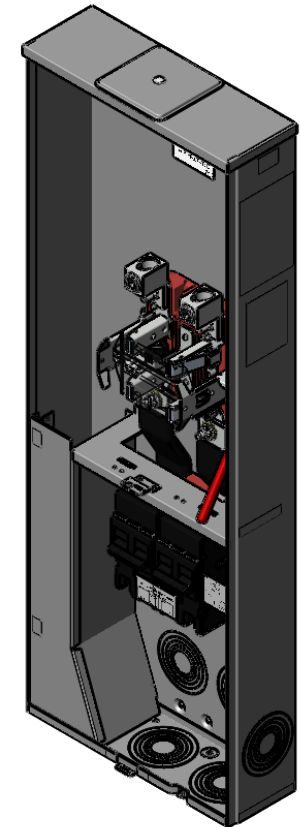
Catalog Number	U5059-X-2/200-K3L-IL
Marketing Product Description	4 Terminal Ringless Large Closing Plate 2-200 Ampere Main Breaker Single Connector Locking 4-600kcmil 7-16 In Knockouts Lock Provision
UPC	784572370722
Length (IN)	4.844
Width (IN)	15
Height (IN)	42.438
Brand Name	Milbank
Type	Ringless Meter Socket
Application	Meter Socket With Main
Standard	UL Listed;Type 3R
Voltage Rating	Up to 240 Volts Alternating Current
Amperage Rating	320 Continuous Ampere
Phase	1 Phase
Frequency Rating	60 Hertz
Size	4.844L x 15W x 42.438H
Number Of Cutouts	2
Cutout Size	Two 200 Ampere Main Breakers
Cable Entry	Overhead or Underground
Terminal	Single Mechanical

Insulation	Glass Polyester
Mounting	Surface Mount
Enclosure	G90 Galvanized Steel with Powder Coat Finish
Jaw Quantity	4 Terminal
Bypass Type	Lever Bypass
Number of Meter Positions	1 Position
Equipment Ground	Ground Bar
Hub Opening	Large Closing Plate
Line Side Wire Range	4 AWG - 600 kcmil or Two 1/0 AWG - 250 kcmil
Load Side Wire Range	1 AWG - 300 kcmil
Barrel Lock Provision	7/16 Inch Knockout for Barrel Lock Provision
Number Of Receptacles	0

Please consult serving utility for their requirements prior to ordering or installing, as specifications and approvals vary by utility and may require local electrical inspector approval. All installations must be installed by a licensed electrician and must comply with all national and local codes, laws and regulations. Milbank reserves the right to make changes in specifications and features shown without notice or obligation.



FEATURE TABLE		
ITEM	QTY	DESCRIPTION
A	8	STD. MNTG. EMBOSS
B	1	1/4 SOLID K.O.
C	1	1/4, 1/2 CONC. K.O.
D	6	1, 1/4, 1/2, 2, 2 1/2, 3 CONC. K.O.



Version:

**1**

**All dimensions are +/- 1/16".  
Drawing views are not to scale.**

Please consult serving utility for their requirements prior to ordering or installing, as specifications and approvals vary by utility, and may require local electrical inspector approval. All installations must be installed by a licensed electrician and must comply with all national and local codes, laws and regulations. Milbank reserves the right to make changes in specifications and features shown without notice or obligation.