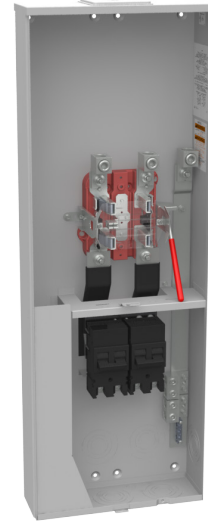




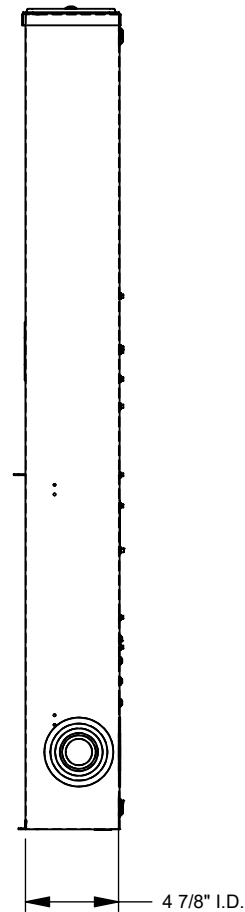
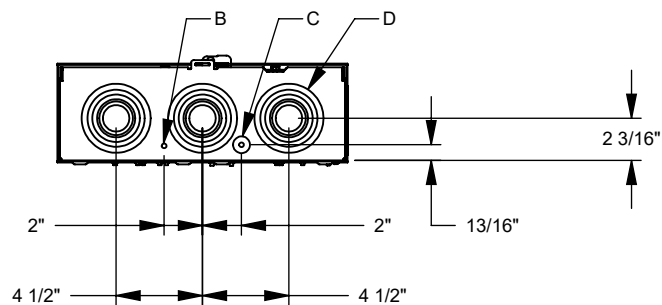
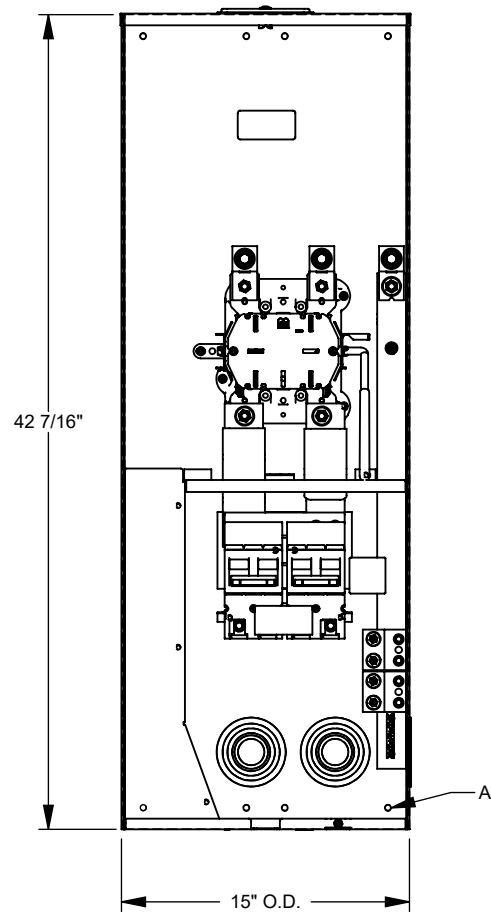
MILBANK
ENERGY AT WORK

U5059-X-2/150-K3L-LIS

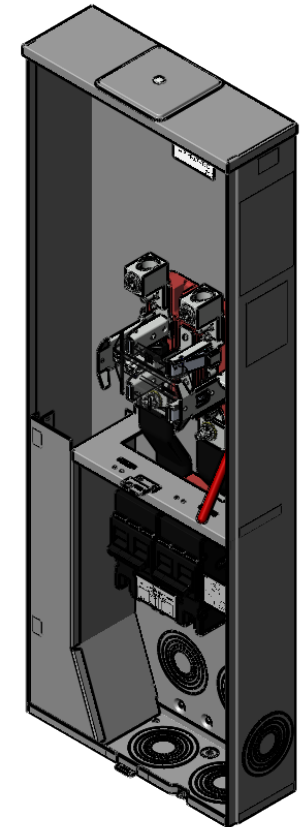


Catalog Number	U5059-X-2/150-K3L-LIS	Insulation	Glass Polyester
Marketing Product Description	4 Terminal Ringless Large Closing Plate 2-150 Ampere Main Breaker Single Connector Locking 4-600kcmil Long Island Lighting Company	Mounting	Surface Mount
UPC	784572492103	Enclosure	G90 Galvanized Steel with Powder Coat Finish
Length (IN)	4.844	Jaw Quantity	4 Terminal
Width (IN)	15	Bypass Type	Lever Bypass
Height (IN)	42.438	Number of Meter Positions	1 Position
Brand Name	Milbank	Equipment Ground	Ground Bar
Type	Ringless Meter Socket	Hub Opening	Large Closing Plate
Application	Meter Socket With Main	Line Side Wire Range	4 AWG - 600 kcmil or Two 1/0 AWG - 250 kcmil
Standard	UL Listed;Type 3R	Load Side Wire Range	1 AWG - 300 kcmil
Voltage Rating	Up to 240 Volts Alternating Current	Number Of Receptacles	0
Amperage Rating	320 Continuous Ampere		
Phase	1 Phase		
Frequency Rating	60 Hertz		
Size	4.844L x 15W x 42.438H		
Number Of Cutouts	2		
Cutout Size	Two 150 Ampere Main Breakers		
Cable Entry	Overhead or Underground		
Terminal	Single Mechanical		

Please consult serving utility for their requirements prior to ordering or installing, as specifications and approvals vary by utility and may require local electrical inspector approval. All installations must be installed by a licensed electrician and must comply with all national and local codes, laws and regulations. Milbank reserves the right to make changes in specifications and features shown without notice or obligation.



FEATURE TABLE		
ITEM	QTY	DESCRIPTION
A	8	STD. MNTG. EMBOSS
B	1	1/4 SOLID K.O.
C	1	1/4, 1/2 CONC. K.O.
D	6	1, 1/4, 1/2, 2, 2 1/2, 3 CONC. K.O.



Version:

1

**All dimensions are +/- 1/16".
Drawing views are not to scale.**

Please consult serving utility for their requirements prior to ordering or installing, as specifications and approvals vary by utility, and may require local electrical inspector approval. All installations must be installed by a licensed electrician and must comply with all national and local codes, laws and regulations. Milbank reserves the right to make changes in specifications and features shown without notice or obligation.