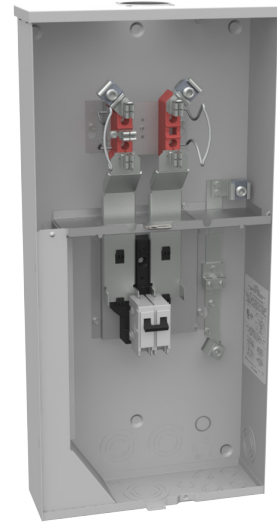




MILBANK
ENERGY AT WORK

U5844-PXL-125



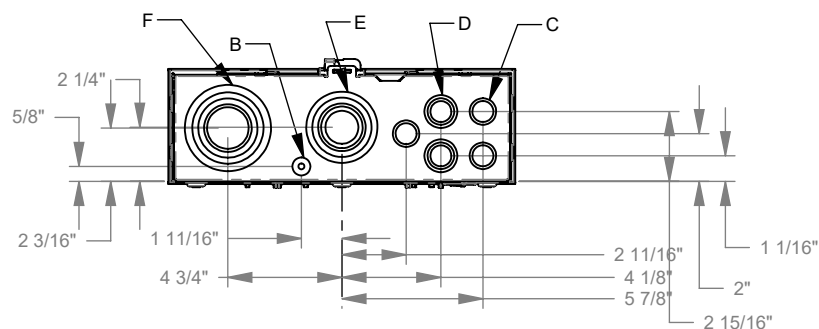
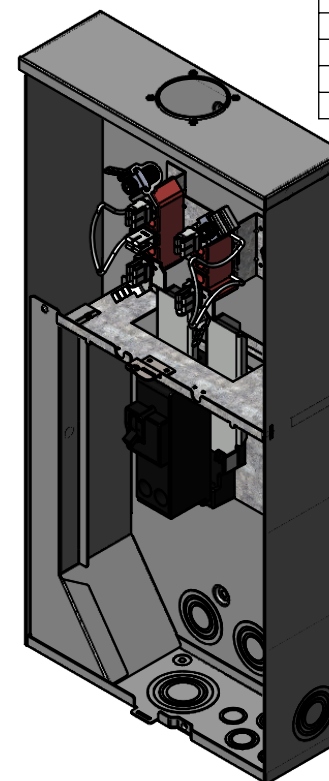
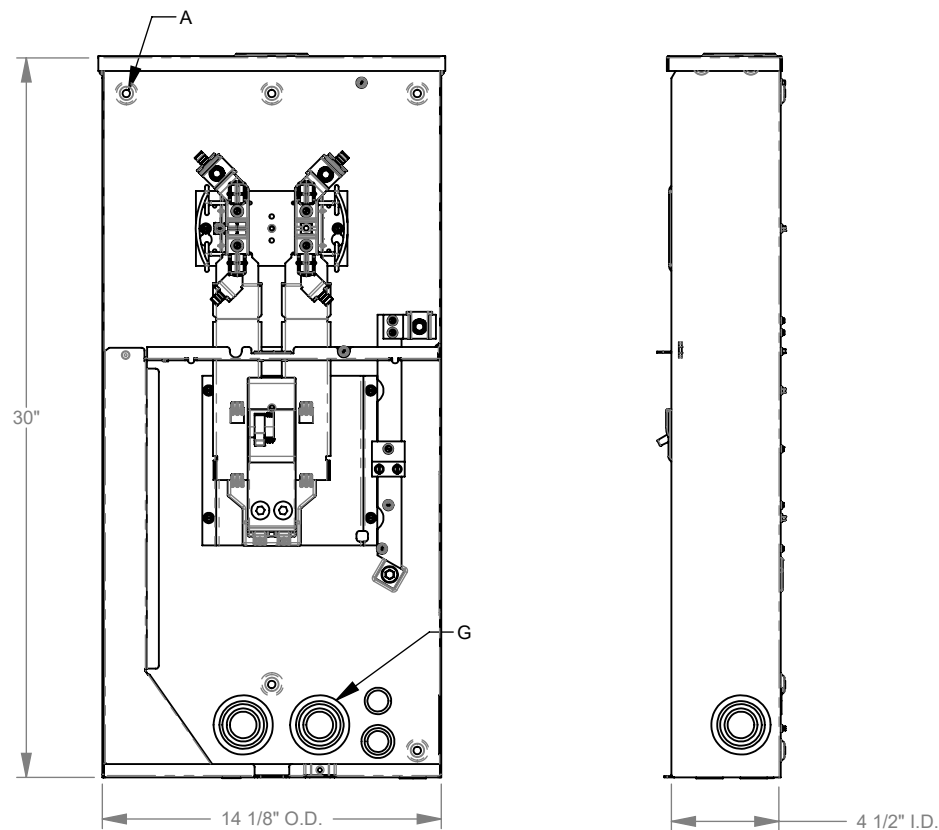
Catalog Number	U5844-PXL-125
Marketing Product Description	4 Terminal Ringless Small Closing Plate Pack Inside Meter Socket 1-125 Ampere Main Breaker
UPC	784572512726
Length (IN)	4.5
Width (IN)	14.01
Height (IN)	30
Brand Name	Milbank
Type	Ringless Meter Socket
Application	Meter Socket With Main
Standard	UL Listed;Type 3R
Voltage Rating	Up to 240 Volts Alternating Current
Amperage Rating	200 Continuous Ampere
Phase	1 Phase
Frequency Rating	60 Hertz
Size	4.5L x 14.01W x 30H
Number Of Cutouts	1
Cutout Size	One 125 Ampere Main Breaker
Cable Entry	Overhead or Underground
Terminal	Lay in
Insulation	Glass Polyester

Mounting	Surface Mount
Enclosure	G90 Galvanized Steel with Powder Coat Finish
Jaw Quantity	4 Terminal
Bypass Type	No Bypass
Number of Meter Positions	1 Position
Equipment Ground	2 Barrel Ground Lug
Hub Opening	Small Closing Plate Included Inside Meter Socket
Line Side Wire Range	6 AWG - 350 kcmil
Load Side Wire Range	2 - 1/0 AWG
Number Of Receptacles	0

Please consult serving utility for their requirements prior to ordering or installing, as specifications and approvals vary by utility and may require local electrical inspector approval. All installations must be installed by a licensed electrician and must comply with all national and local codes, laws and regulations. Milbank reserves the right to make changes in specifications and features shown without notice or obligation.

FEATURE TABLE

ITEM	QTY	DESCRIPTION
A	6	U/L MNTG.EMBOSS
B	1	1/4, 1/2 CONC. K.O.
C	4	1/2, 3/4 CONC. K.O.
D	3	1/2, 3/4, 1 CONC. K.O.
E	1	1, 1 1/4, 1 1/2, 2, 2 1/2 CONC. K.O.
F	1	1 1/4, 1 1/2, 2, 2 1/2, 3 CONC. K.O.
G	3	3/4, 1, 1 1/4, 1 1/2, 2 CONC. K.O.



Version:

1

All dimensions are +/- 1/16".
Drawing views are not to scale.

Utility requirements for this equipment may vary. Always consult the serving utility for their requirements prior to ordering or installing this equipment. This product must be installed by a licensed electrician. Installation of this equipment may require local electrical inspector approval.