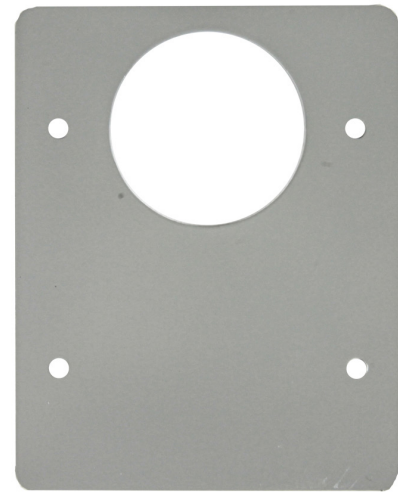




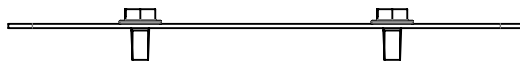
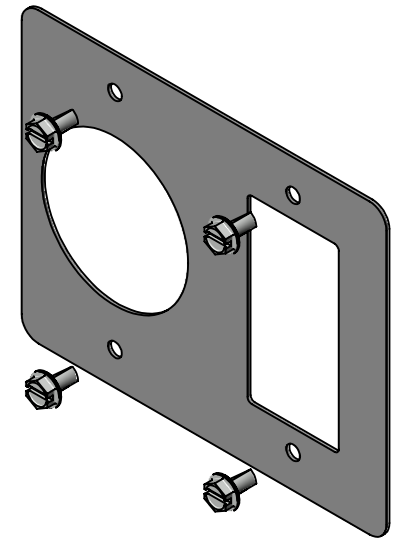
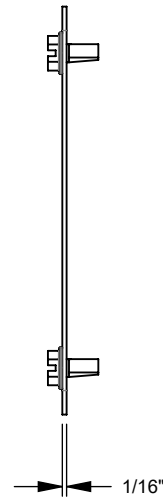
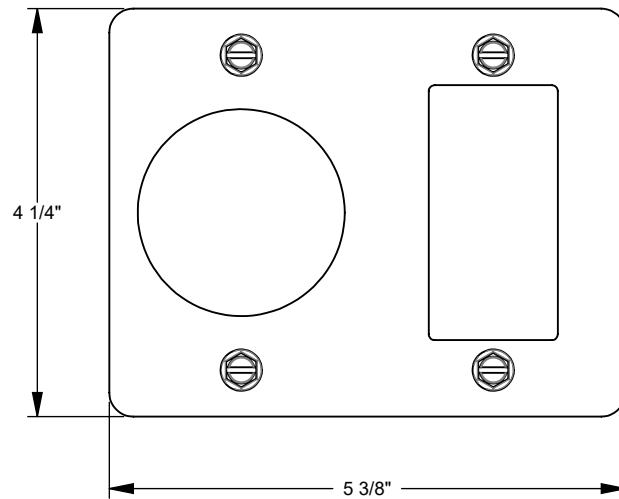
MILBANK
ENERGY AT WORK

K5935-54



Catalog Number	K5935-54
Marketing Product Description	Receptacle Face Plate Versaped 1450 Blank
UPC	784572584839
Length (IN)	0.045
Width (IN)	5.375
Height (IN)	4.25
Weight (LB)	0.33
Brand Name	Milbank
Type	Receptacle Cover Plate
Special Features	One NEMA 14-50 or One NEMA TT30 Receptacle
Application	Metering Accessory
Material	G90 Galvanized Steel
Finish	Powder Coat Finish
Shape	Rectangle
Size	0.045L x 5.375W x 4.25H
Number Of Outlet	1
Color	ANSI 61 Gray
Construction	Sheared
Mounting	Two Position Bridge Mount
NEMA Rating	No Rating

Please consult serving utility for their requirements prior to ordering or installing, as specifications and approvals vary by utility and may require local electrical inspector approval. All installations must be installed by a licensed electrician and must comply with all national and local codes, laws and regulations. Milbank reserves the right to make changes in specifications and features shown without notice or obligation.



MILBANK
ENERGY AT WORK

Version:

1

**All dimensions are $\pm \frac{1}{16}"$.
Drawing views are not to scale.**

Please consult serving utility for their requirements prior to ordering or installing, as specifications and approvals vary by utility, and may require local electrical inspector approval. All installations must be installed by a licensed electrician and must comply with all national and local codes, laws and regulations. Milbank reserves the right to make changes in specifications and features shown without notice or obligation.