



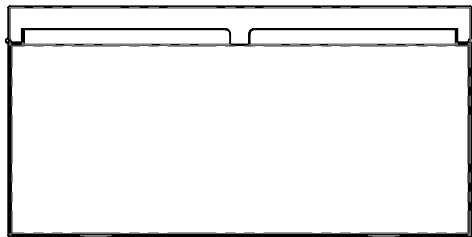
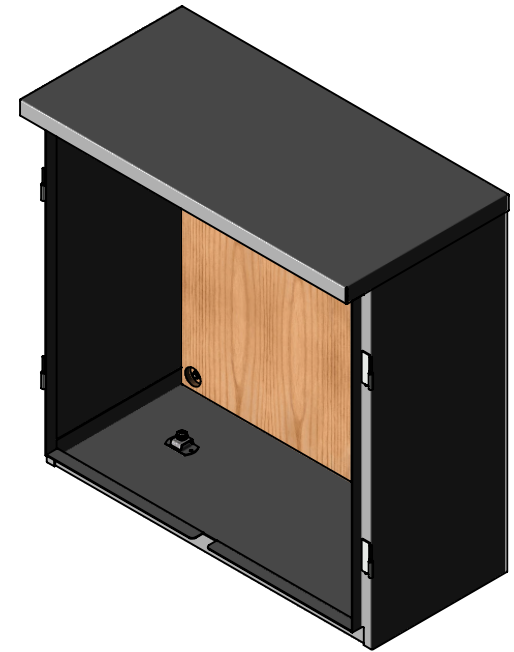
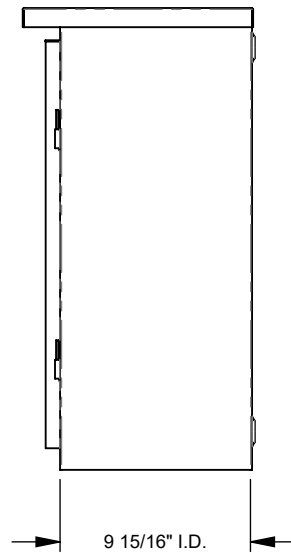
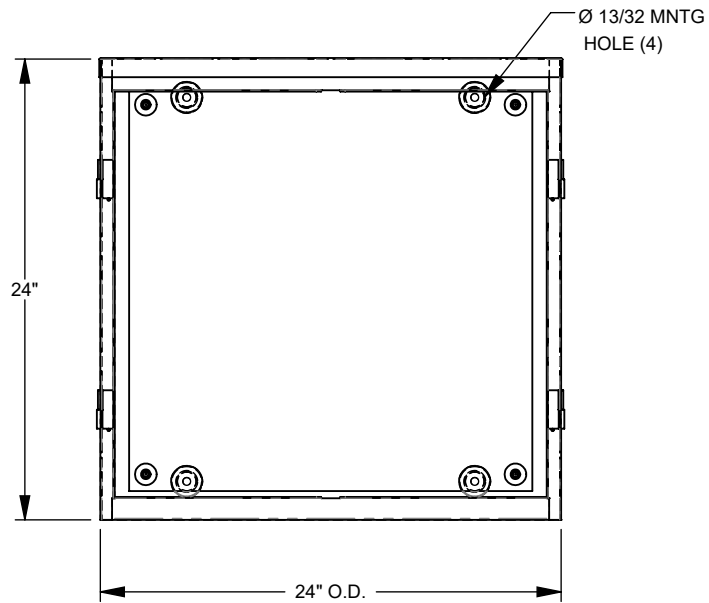
**MILBANK**  
ENERGY AT WORK



## 242410-CT3R

Catalog Number	242410-CT3R
Marketing Product Description	24X10x24 Hinge Cover Type 3R Steel No Knockouts ANSI 61 Gray Double Doors Padlocking 3 Point Handle Back Panel Weld Studs Draw Shield No Center Position
UPC	784572611450
Length (IN)	10
Width (IN)	24
Height (IN)	24
Weight (LB)	42
Brand Name	Milbank
Type	Hinge Cover
Application	Current Transformer Enclosure
Standard	UL Listed
Material	G90 Galvanized Steel with Powder Coat Finish
Size	10L x 24W x 24H
Color	ANSI 61 Gray
Cable Entry	No Knockouts
Mounting	Pad Mount or Wall Mount
NEMA Rating	Type 3R
Door or Cover	Double Door
Back Panel	Mounting Emboss on Enclosure Back

Please consult serving utility for their requirements prior to ordering or installing, as specifications and approvals vary by utility and may require local electrical inspector approval. All installations must be installed by a licensed electrician and must comply with all national and local codes, laws and regulations. Milbank reserves the right to make changes in specifications and features shown without notice or obligation.



**MILBANK**  
ENERGY AT WORK

Version:

**1**

**All dimensions are +/- 1/16".  
Drawing views are not to scale.**

Please consult serving utility for their requirements prior to ordering or installing, as specifications and approvals vary by utility, and may require local electrical inspector approval. All installations must be installed by a licensed electrician and must comply with all national and local codes, laws and regulations. Milbank reserves the right to make changes in specifications and features shown without notice or obligation.