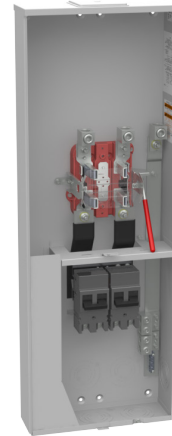




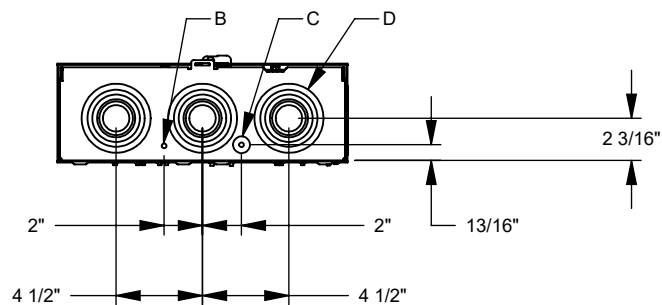
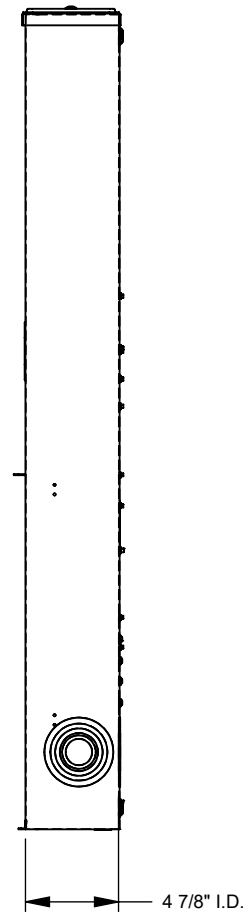
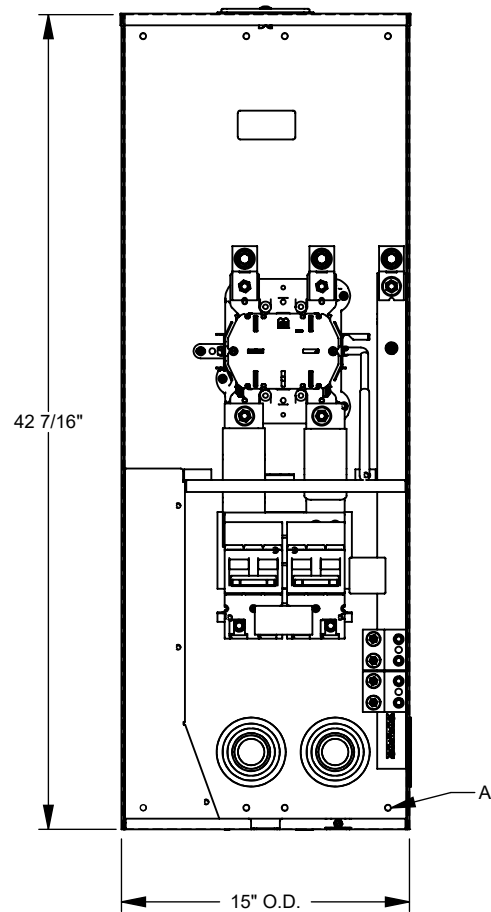
MILBANK
ENERGY AT WORK

U5059-X-200/100-K3L-ALT

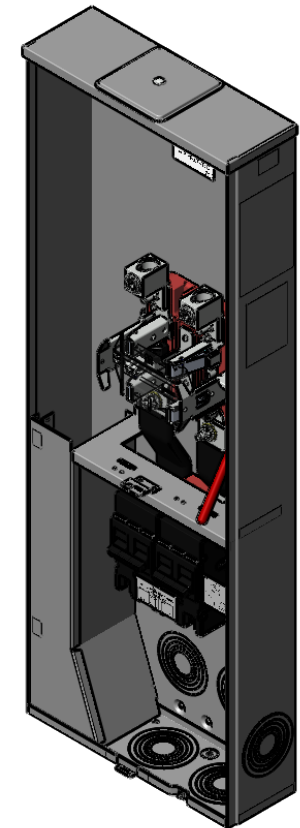


| | | | |
|-------------------------------|--|---------------------------|--|
| Catalog Number | U5059-X-200/100-K3L-ALT | Terminal | 3/8 Inch Stud |
| Marketing Product Description | 4 Terminal Ringless Large Closing Plate 1-200 Ampere Main Breaker 1-100 Ampere Main Breaker Single Connector Locking 4-600kcmil Alliant Energy | Insulation | Glass Polyester |
| UPC | 784572654990 | Mounting | Surface Mount |
| Length (IN) | 4.844 | Enclosure | G90 Galvanized Steel with Powder Coat Finish |
| Width (IN) | 15 | Jaw Quantity | 4 Terminal |
| Height (IN) | 42.438 | Bypass Type | Lever Bypass |
| Brand Name | Milbank | Number of Meter Positions | 1 Position |
| Type | Ringless Meter Socket | Equipment Ground | Ground Bar |
| Application | Meter Socket With Main | Hub Opening | Large Closing Plate |
| Standard | UL Listed;Type 3R | Line Side Wire Range | 4 AWG - 600 kcmil or Two 1/0 AWG - 250 kcmil |
| Voltage Rating | Up to 240 Volts Alternating Current | Load Side Wire Range | 1 AWG - 300 kcmil |
| Amperage Rating | 320 Continuous Ampere | Number Of Receptacles | 0 |
| Phase | 1 Phase | | |
| Frequency Rating | 60 Hertz | | |
| Size | 4.844L x 15W x 42.438H | | |
| Number Of Cutouts | 2 | | |
| Cutout Size | One 200 Ampere Main Breaker and One 100 Ampere Main Breaker | | |
| Cable Entry | Overhead or Underground | | |

Please consult serving utility for their requirements prior to ordering or installing, as specifications and approvals vary by utility and may require local electrical inspector approval. All installations must be installed by a licensed electrician and must comply with all national and local codes, laws and regulations. Milbank reserves the right to make changes in specifications and features shown without notice or obligation.



| FEATURE TABLE | | |
|---------------|-----|-------------------------------------|
| ITEM | QTY | DESCRIPTION |
| A | 8 | STD. MNTG. EMBOSS |
| B | 1 | 1/4 SOLID K.O. |
| C | 1 | 1/4, 1/2 CONC. K.O. |
| D | 6 | 1, 1/4, 1/2, 2, 2 1/2, 3 CONC. K.O. |



Version:

1

**All dimensions are +/- 1/16".
Drawing views are not to scale.**

Please consult serving utility for their requirements prior to ordering or installing, as specifications and approvals vary by utility, and may require local electrical inspector approval. All installations must be installed by a licensed electrician and must comply with all national and local codes, laws and regulations. Milbank reserves the right to make changes in specifications and features shown without notice or obligation.