



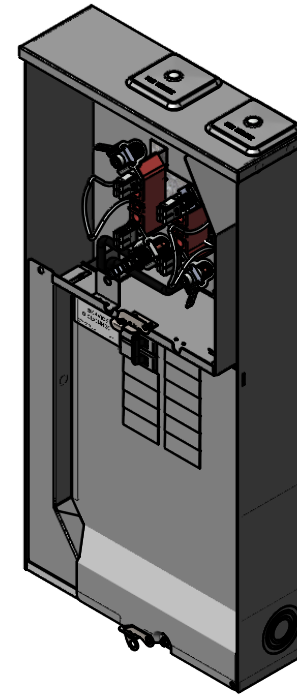
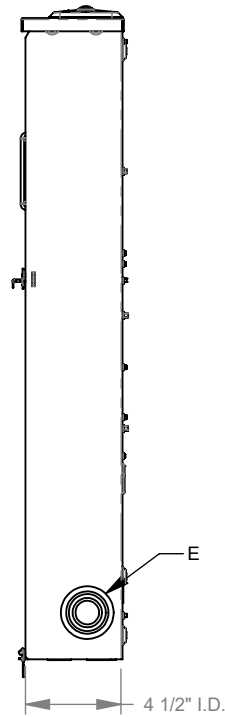
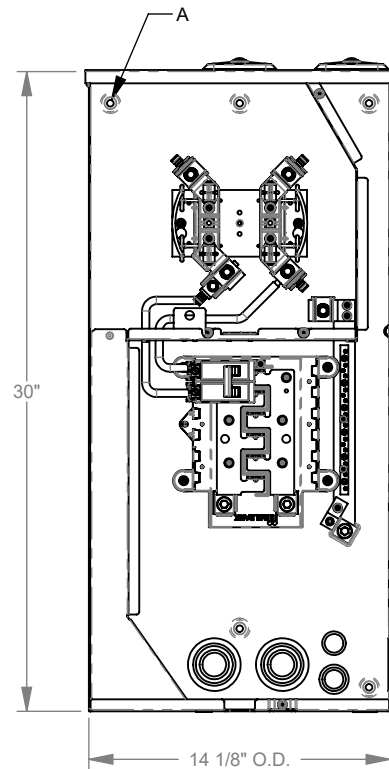
MILBANK
ENERGY AT WORK

U5168-XTL-100-KK-BL

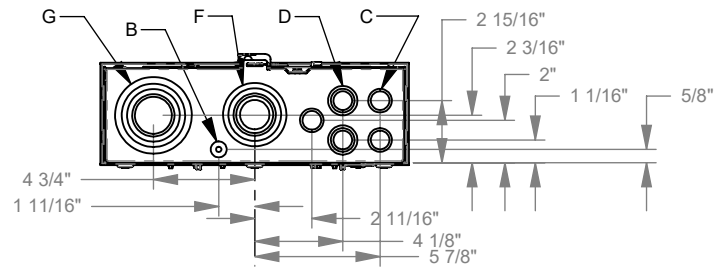


Catalog Number	U5168-XTL-100-KK-BL	Terminal	Lay in
Marketing Product Description	4 Terminal Ringless 2 Small Closing Plates 1-100 Ampere Main Breaker 10 Branch Circuit Horn Bypass 9-16 In Barrel Lock With Bracket Provision	Insulation	Glass Polyester
UPC	784572673250	Mounting	Surface Mount
Length (IN)	4.5	Enclosure	G90 Galvanized Steel with Powder Coat Finish
Width (IN)	14.125	Jaw Quantity	4 Terminal
Height (IN)	30	Bypass Type	Horn Bypass
Brand Name	Milbank	Number of Meter Positions	1 Position
Type	Ringless Meter Socket	Equipment Ground	Ground Bar
Application	Meter Socket With Main And Load Center	Hub Opening	Twin Small Closing Plates
Standard	UL Listed;Type 3R	Line Side Wire Range	6 AWG - 350 kcmil
Voltage Rating	Up to 240 Volts Alternating Current	Load Side Wire Range	6 AWG - 350 kcmil
Amperage Rating	200 Continuous Ampere	Barrel Lock Provision	9/16 Inch Knockout and Angle Bracket for Barrel Lock Provision
Phase	1 Phase	Number Of Receptacles	0
Frequency Rating	60 Hertz		
Size	4.5L x 14.125W x 30H		
Number Of Cutouts	1		
Cutout Size	One 100 Ampere Main Breaker		
Cable Entry	Overhead or Underground		

Please consult serving utility for their requirements prior to ordering or installing, as specifications and approvals vary by utility and may require local electrical inspector approval. All installations must be installed by a licensed electrician and must comply with all national and local codes, laws and regulations. Milbank reserves the right to make changes in specifications and features shown without notice or obligation.



FEATURE TABLE		
ITEM	QTY	DESCRIPTION
A	6	U/L MNTG.EMBOSS
B	2	1/4, 1/2 CONC. K.O.
C	4	1/2, 3/4 CONC. K.O.
D	3	1/2, 3/4, 1 CONC. K.O.
E	3	3/4, 1, 1 1/4, 1 1/2, 2 CONC. K.O.
F	1	1, 1 1/4, 1 1/2, 2, 2 1/2 CONC. K.O.
G	1	1, 1 1/4, 1 1/2, 2, 2 1/2, 3 CONC. K.O.



Version:

1

**All dimensions are +/- 1/16".
Drawing views are not to scale.**
Utility requirements for this equipment may vary. Always consult the serving utility for their requirements prior to ordering or installing this equipment. This product must be installed by a licensed electrician. Installation of this equipment may require local electrical inspector approval.