



MILBANK
ENERGY AT WORK

403515-CT3R-SP

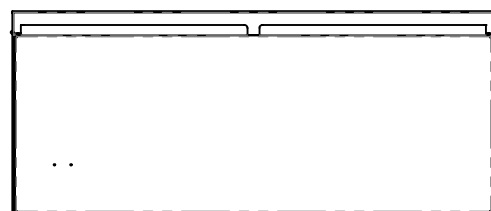
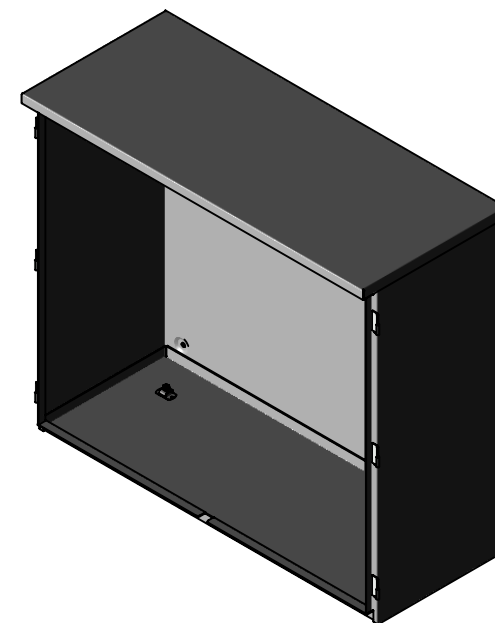
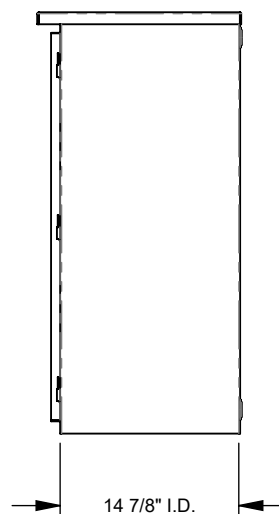
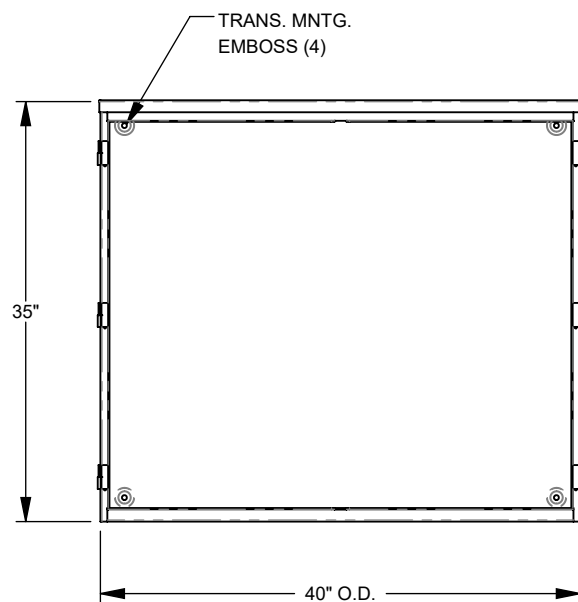


Catalog Number	403515-CT3R-SP
Marketing Product Description	35x15x40 Hinge Cover Type 3R UL Listed Steel No Knockouts ANSI 61 Gray Lift Off Hinges Double Doors Handle On Right Padlocking 3 Point Handle Draw Shield
UPC	784572677869
Length (IN)	15
Width (IN)	40
Height (IN)	35
Weight (LB)	138
Brand Name	Milbank
Type	Hinge Cover
Special Features	Mounting Emboss on Enclosure Back
Application	Current Transformer Enclosure
Standard	UL Listed
Material	G90 Galvanized Steel with Powder Coat Finish
Size	15L x 40W x 35H
Color	ANSI 61 Gray
Cable Entry	No Knockouts
Mounting	Pad Mount or Wall Mount
NEMA Rating	Type 3R
Door or Cover	Double Door

Back Panel

Mounting Emboss on
Enclosure Back

Please consult serving utility for their requirements prior to ordering or installing, as specifications and approvals vary by utility and may require local electrical inspector approval. All installations must be installed by a licensed electrician and must comply with all national and local codes, laws and regulations. Milbank reserves the right to make changes in specifications and features shown without notice or obligation.



MILBANK
ENERGY AT WORK

Version:

1

**All dimensions are +/- 1/16".
Drawing views are not to scale.**

Please consult serving utility for their requirements prior to ordering or installing, as specifications and approvals vary by utility, and may require local electrical inspector approval. All installations must be installed by a licensed electrician and must comply with all national and local codes, laws and regulations. Milbank reserves the right to make changes in specifications and features shown without notice or obligation.