



MILBANK
ENERGY AT WORK

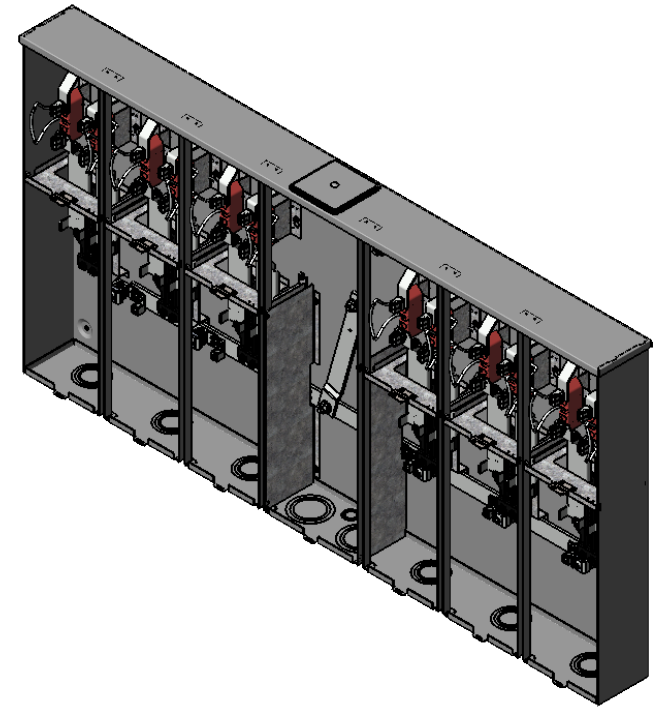
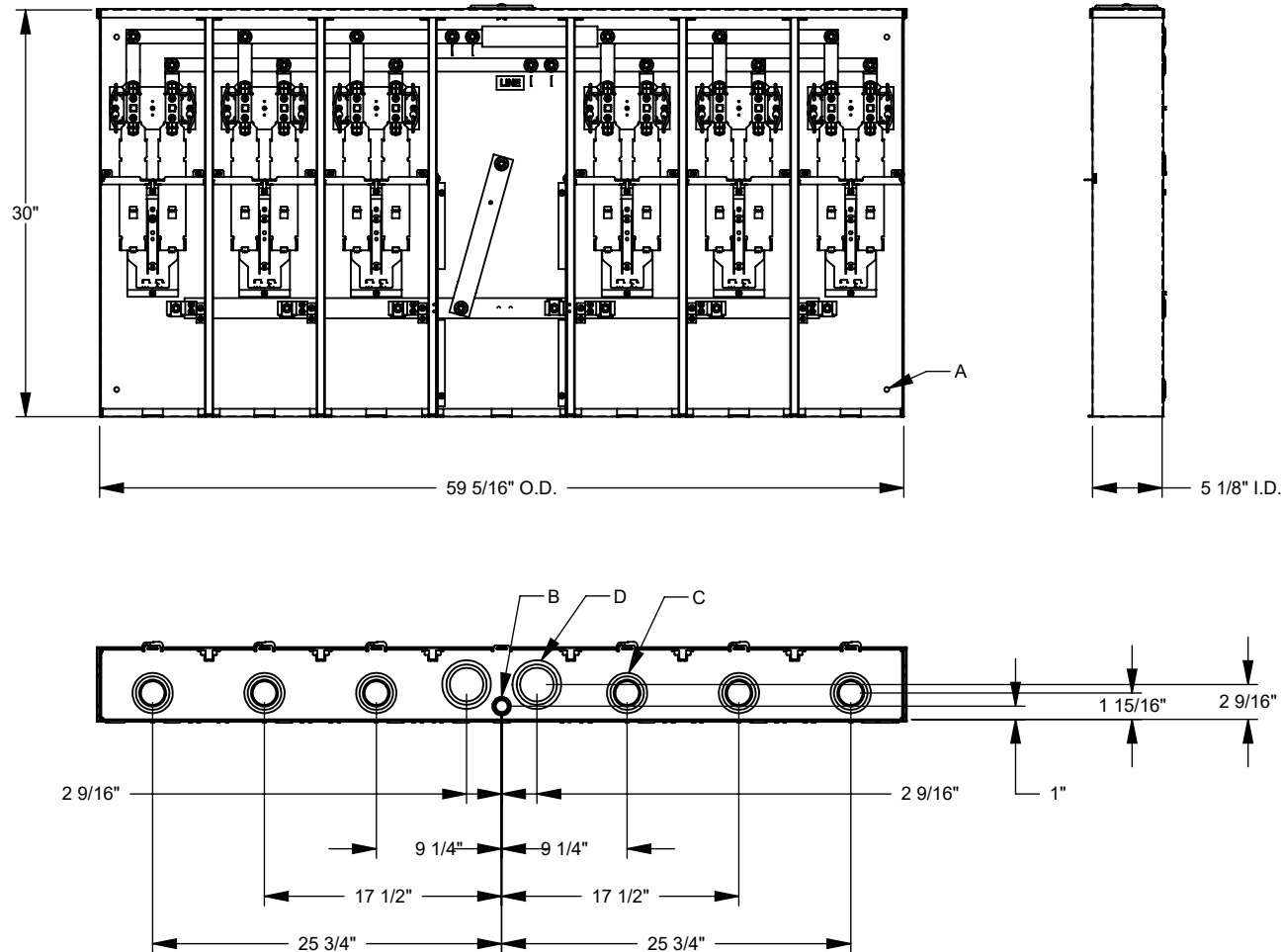
U5886-X-6/200-KK-K3-DPL



| | | | |
|-------------------------------|---|---------------------------|--|
| Catalog Number | U5886-X-6/200-KK-K3-DPL | Insulation | Glass Polyester |
| Marketing Product Description | 4 Terminal Ringless Large Closing Plate Horn Bypass 6 Position 6-200 Ampere Main Breaker Double Connector 6-350kcmil Delmarva Power And Light | Mounting | Surface Mount |
| UPC | 784572726444 | Enclosure | G90 Galvanized Steel with Powder Coat Finish |
| Length (IN) | 5.125 | Jaw Quantity | 4 Terminal |
| Width (IN) | 59.313 | Bypass Type | Horn Bypass |
| Height (IN) | 30 | Number of Meter Positions | 6 Positions |
| Brand Name | Milbank | Equipment Ground | Ground Lug |
| Type | Ringless Meter Socket | Hub Opening | Large Closing Plate |
| Application | Meter Socket With Main | Line Side Wire Range | 6 AWG - 350 kcmil |
| Standard | UL Listed;Type 3R | Load Side Wire Range | 1 AWG - 300 kcmil |
| Voltage Rating | Up to 240 Volts Alternating Current | Number Of Receptacles | 0 |
| Amperage Rating | 200 Continuous Ampere | | |
| Phase | 1 Phase | | |
| Frequency Rating | 60 Hertz | | |
| Size | 5.125L x 59.313W x 30H | | |
| Number Of Cutouts | 1 | | |
| Cutout Size | One 200 Ampere Main Breaker | | |
| Cable Entry | Overhead or Underground | | |
| Terminal | Single Mechanical | | |

Please consult serving utility for their requirements prior to ordering or installing, as specifications and approvals vary by utility and may require local electrical inspector approval. All installations must be installed by a licensed electrician and must comply with all national and local codes, laws and regulations. Milbank reserves the right to make changes in specifications and features shown without notice or obligation.

| FEATURE TABLE | | |
|---------------|-----|-----------------------------------|
| ITEM | QTY | DESCRIPTION |
| A | 4 | TRANS. MNTG.EMBOSS |
| B | 1 | 1/2, 3/4, 1 CONC. K.O. |
| C | 6 | 1 1/4, 1 1/2, 2, 2 1/2 CONC. K.O. |
| D | 2 | 2, 2 1/2, 3 CONC. K.O. |



Version:

1

All dimensions are +/- 1/16".
Drawing views are not to scale.

Please consult serving utility for their requirements prior to ordering or installing, as specifications and approvals vary by utility, and may require local electrical inspector approval. All installations must be installed by a licensed electrician and must comply with all national and local codes, laws and regulations. Milbank reserves the right to make changes in specifications and features shown without notice or obligation.